

FORMAX[®]

AP2
Address Printer

PARTS MANUAL
First Edition

This manual is intended solely for the use and information of ~~Q I æ~~, its designated agents, customers, and their employees. The information in this guide was obtained from several different sources that are deemed reliable by all industry standards. To the best of our knowledge, that information is accurate in all respects. However, neither ~~Q I æ~~ nor any of its agents or employees shall be responsible for any inaccuracies contained herein.

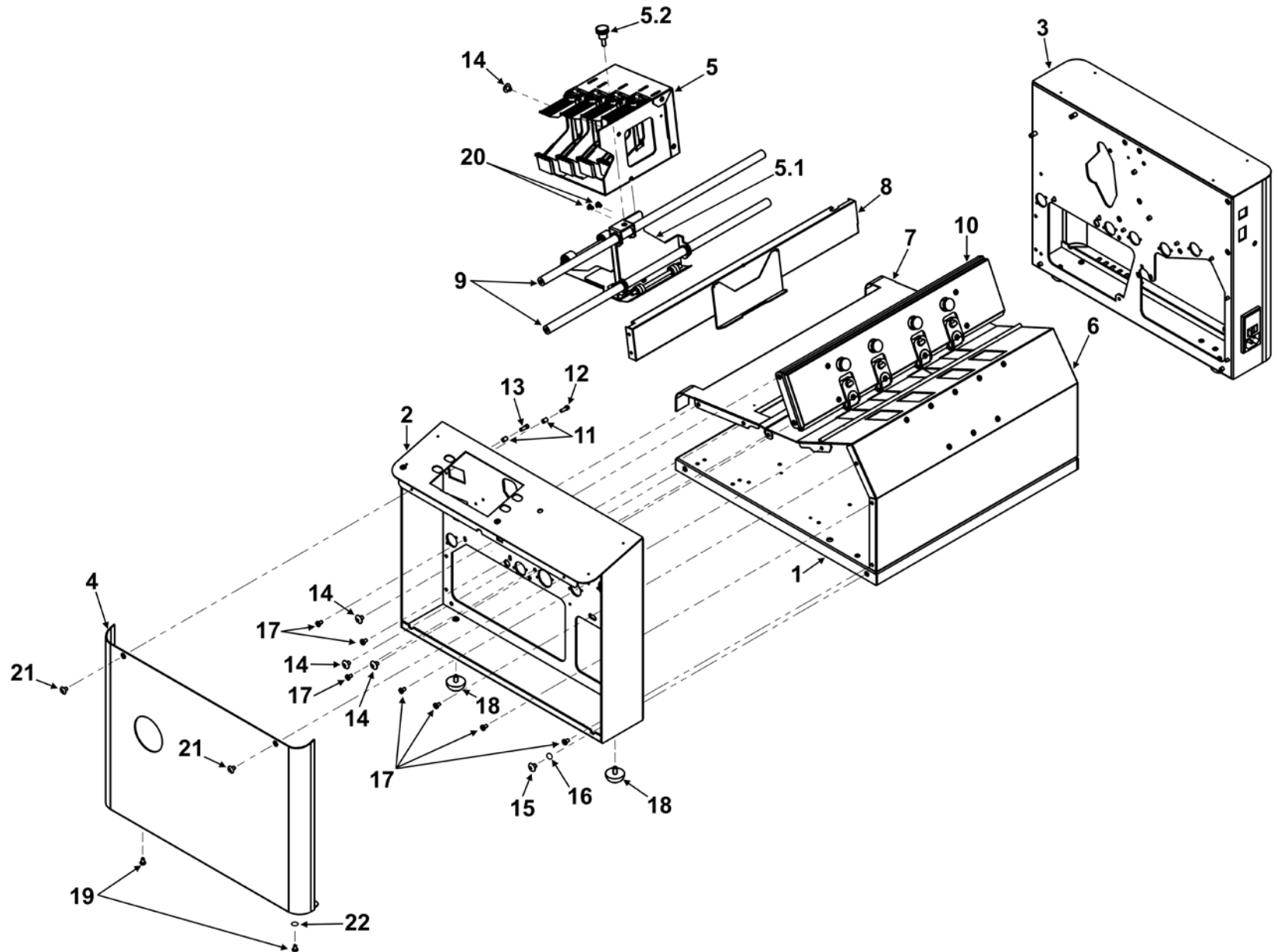
Hewlett-Packard is a registered trademark of Hewlett-Packard Corporation.
Windows is a registered trademark of Microsoft Corporation.
All other trademarks are the property of their respective holders.

All rights reserved. No part of this book may be reproduced or transmitted in any form or by any means, electronic or mechanical, including photocopying, recording, or any information storage and retrieval system, without permission in writing from the publisher.

TABLE OF CONTENTS

GROUP 1 – EXTERNAL ASSEMBLY – OPERATOR SIDE	1
GROUP 2 – EXTERNAL ASSEMBLY –NON-OPERATOR SIDE	3
GROUP 3 – MECHANICAL – OPERATOR SIDE	5
GROUP 4 – MECHANICAL – NON-OPERATOR SIDE	7
GROUP 5 – METERING PLATE ASSEMBLY	9
GROUP 6 – CABLE GUIDE ASSEMBLY	11
GROUP 7 – PRINthead CARTRIDGE CARRIER ASSEMBLY	12
GROUP 8 – 4-HEAD CARTRIDGE HOLDER ASSEMBLY	13
GROUP 9 – REAR FEED ROLLER SHAFT ASSEMBLY	14
GROUP 10 – FRONT FEED ROLLER SHAFT ASSEMBLY	15
GROUP 11 – PULL-OUT ROLLER SHAFT ASSEMBLY	16
GROUP 12 – INTERMEDIATE ROLLER ASSEMBLY	17
GROUP 13 – EXIT ROLLER ASSEMBLY	18
GROUP 14 – GEAR AND ECCENTRIC CAM SHAFT	19
GROUP 15 – WIRING DIAGRAM	20
CONSUMABLES, NORMAL WEAR AND SPARE PARTS	22
INDEX	23

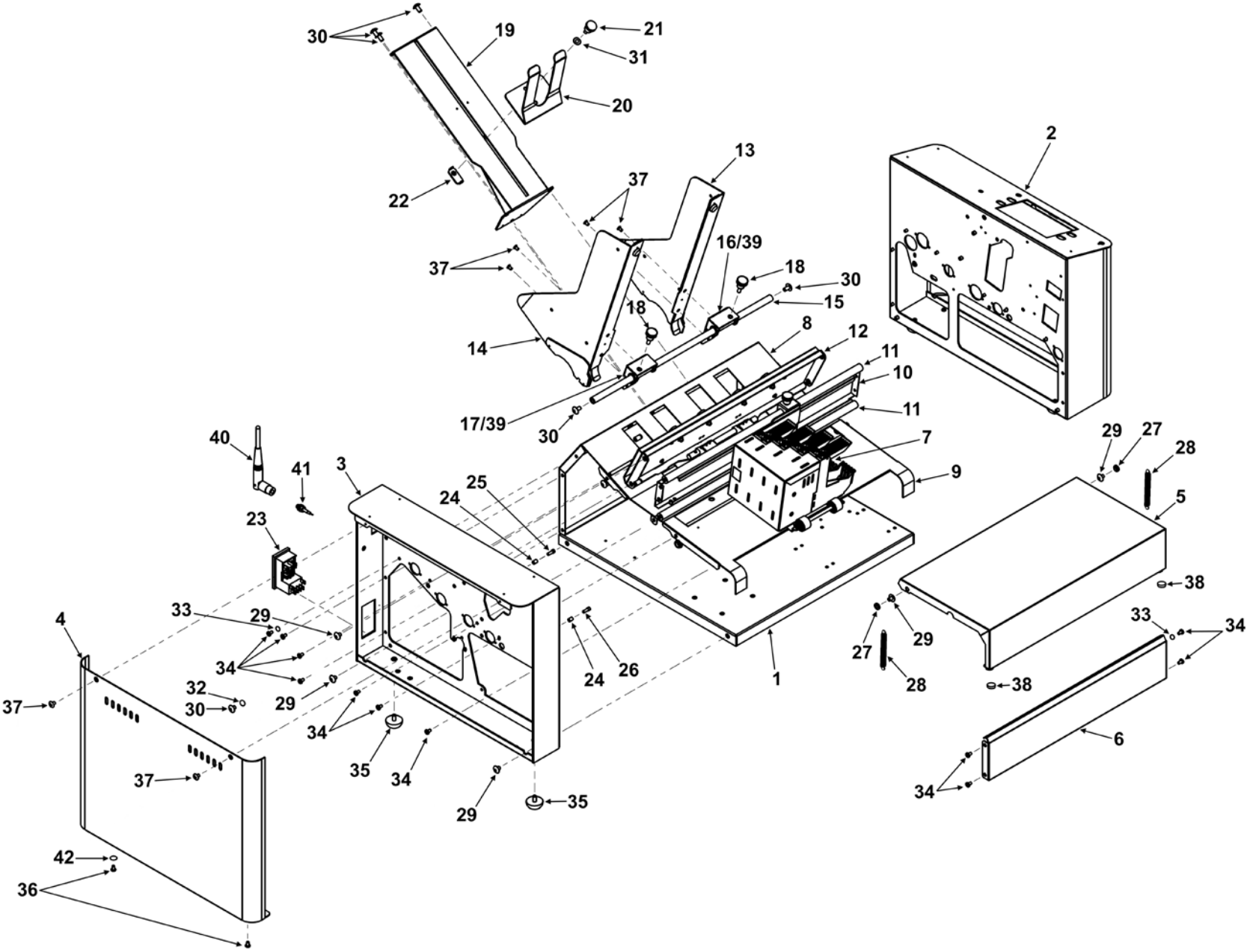
GROUP 1 EXTERNAL ASSEMBLY – OPERATOR SIDE



GROUP 1
EXTERNAL ASSEMBLY – OPERATOR SIDE

KEY	PART NO.	DESCRIPTION	QTY
1	36E-100-18	PRINTER BASE	1
2	36E-100-08	FRONT SIDE FRAME WELDMENT	1
3	36E-100-04	REAR SIDE FRAME WELDMENT	1
4	36E-100-31	FRONT SIDE FRAME COVER	1
5	36-106-14	4-HEAD CARTRIDGE HOLDER- ASSEMBLY (SEE GROUP 8)	1
5.1		CARTRIDGE CARRIER ASSEMBLY (SEE GROUP 7)	
5.2	24-101-11	THUMBSCREW, 10-32 THREAD	1
6	36-100-19	CENTER PLATE ASSEMBLY	1
7	36-103-04	CONVEYOR BODY WELDMENT	1
8	44-105-20	CABLE GUIDE ASSEMBLY (SEE GROUP 6)	1
9	44-105-28	CLUSTER ROD	2
10		METERING PLATE ASSEMBLY (SEE GROUP 5)	1
11	20-100-37	SPACER	2
12	22-100-36	SCREW (SPRING), 6-32 x 3/8, SOC. HD., SS	1
13	20-100-36	SCREW (STOPPER)	1
14	123-0017	SCREW, 10-32 x 1/4 PH, TRUSS HD.	3
15	123-0024	SCREW, 10-32 x 3/8 PH, TRUSS HD., SS	1
16	123-0237	STAR WASHER, #10 EXTERNAL TOOTH	1
17	123-0612	SCREW, 10-32 x 1/4 PH, PAN HD.	7
18	123-0620	RUBBER FOOT	2
19	123-1136	SCREW, 8-32 x 1/4 PH, TRUSS HD., SS	2
20	123-1158	SCREW, 4-40 x 3/16 PH, FL. HD. UNDERCUT, SS	2
21	123-1178	SCREW, 6-32 x 1/4 PH, FL. HD. UNDERCUT, SS	2
22	123-3072	STAR WASHER, #8 EXTERNAL TOOTH	1

**GROUP 2
EXTERNAL ASSEMBLY – NON-OPERATOR SIDE**

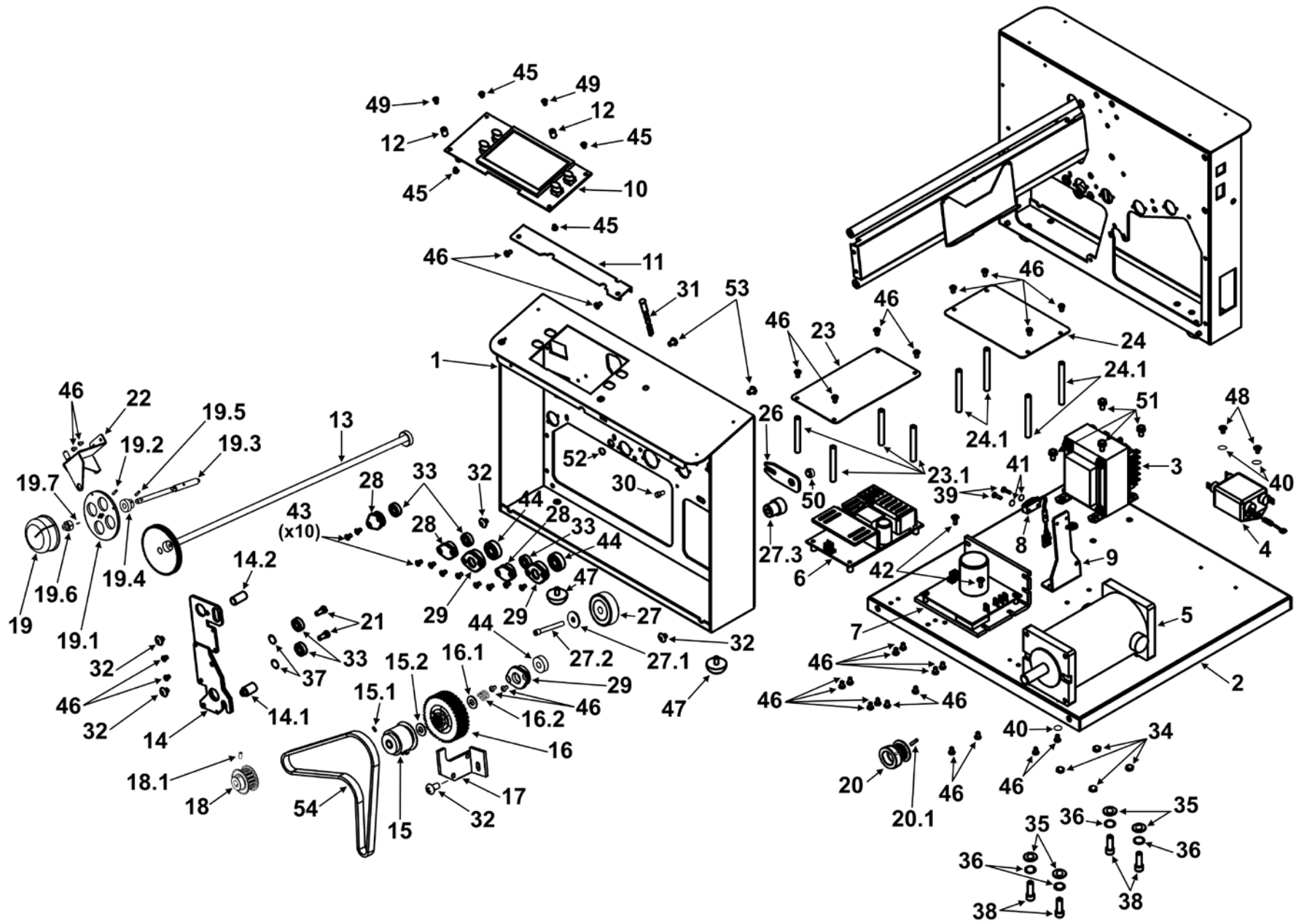


GROUP 2 EXTERNAL ASSEMBLY – NON-OPERATOR SIDE

KEY	PART NO.	DESCRIPTION	QTY
1	36E-100-18	PRINTER BASE	1
2	36E-100-08	FRONT SIDE FRAME WELDMENT	1
3	36E-100-04	REAR SIDE FRAME WELDMENT	1
4	36E-100-34	REAR SIDE FRAME COVER	1
5	36E-100-26	TOP COVER WELDMENT	1
6	36E-100-22	FRONT CLOSURE	1
7	36-106-14	4-HEAD CARTRIDGE HOLDER-CARRIER ASSEMBLY (SEE GROUPS 7 & 8)	1
8	36-100-19	CENTER PLATE ASSEMBLY	1
9	36-103-04	CONVEYOR BODY WELDMENT	1
10	44-105-20	CABLE GUIDE ASSEMBLY (SEE GROUP 6)	1
11	44-105-28	CLUSTER ROD	2
12		METERING PLATE ASSEMBLY (SEE GROUP 5)	1
13	36-107-05	PAPER GUIDE WELDMENT, LH	1
14	36-107-09	PAPER GUIDE WELDMENT, RH	1
15	29-106-10	SIDE GUIDE BAR	1
16	36-107-18	SIDE GUIDE HOLDER, LH	1
17	36-107-19	SIDE GUIDE HOLDER, RH	1
18	24-101-11	THUMBSCREW, 10-32 THREAD	2
19	36-107-14	REAR MEDIA SUPPORT WELDMENT	1
20	42-107-17	REAR MEDIA SUPPORT, NARROW	1
21	94-104-06	KNOB, 10-32 THREAD	1
22	35-211-19	REAR MEDIA SUPPORT NUT	1

KEY	PART NO.	DESCRIPTION	QTY
23	36-500-36	POWER INLET, 120 VAC	1
24	20-100-37	SPACER	2
25	22-100-36	SCREW (SPRING), 6-32 x 3/8, SOC. HD., SS	1
26	20-100-36	SCREW (STOPPER)	1
27	22-100-31	SPACER, TOP COVER	2
28	20-103-06	SPRING, TOP COVER	2
29	123-0017	SCREW, 10-32 x 1/4 PH, TRUSS HD.	5
30	123-0024	SCREW, 10-32 x 3/8 PH, TRUSS HD., MS	6
31	123-0148	WASHER, 7/16 OD x 0.200 ID x 1/32	1
32	123-0237	STAR WASHER, #10 EXTERNAL TOOTH	1
33	123-0252	STAR WASHER, #6 EXTERNAL TOOTH	2
34	123-0612	SCREW, 10-32 x 1/4 PH, PAN HD.	11
35	123-0620	RUBBER FOOT	2
36	123-1136	SCREW, 8-32 x 1/4 PH, TRUSS HD., SS	2
37	123-1178	SCREW, 6-32 x 1/4 PH, FL. HD., UNDERCUT	6
38	123-1257	MOLDED URETHANE BUMPER	2
39	123-2316	BEARING CLIP, 5/16 x 0.375	4
40	123-2982	WIFI ANTENNA	1
41	123-2983	ANTENNA BULKHEAD	1
42	123-3072	STAR WASHER, #8 EXTERNAL TOOTH	1

GROUP 3 MECHANICAL – OPERATOR SIDE

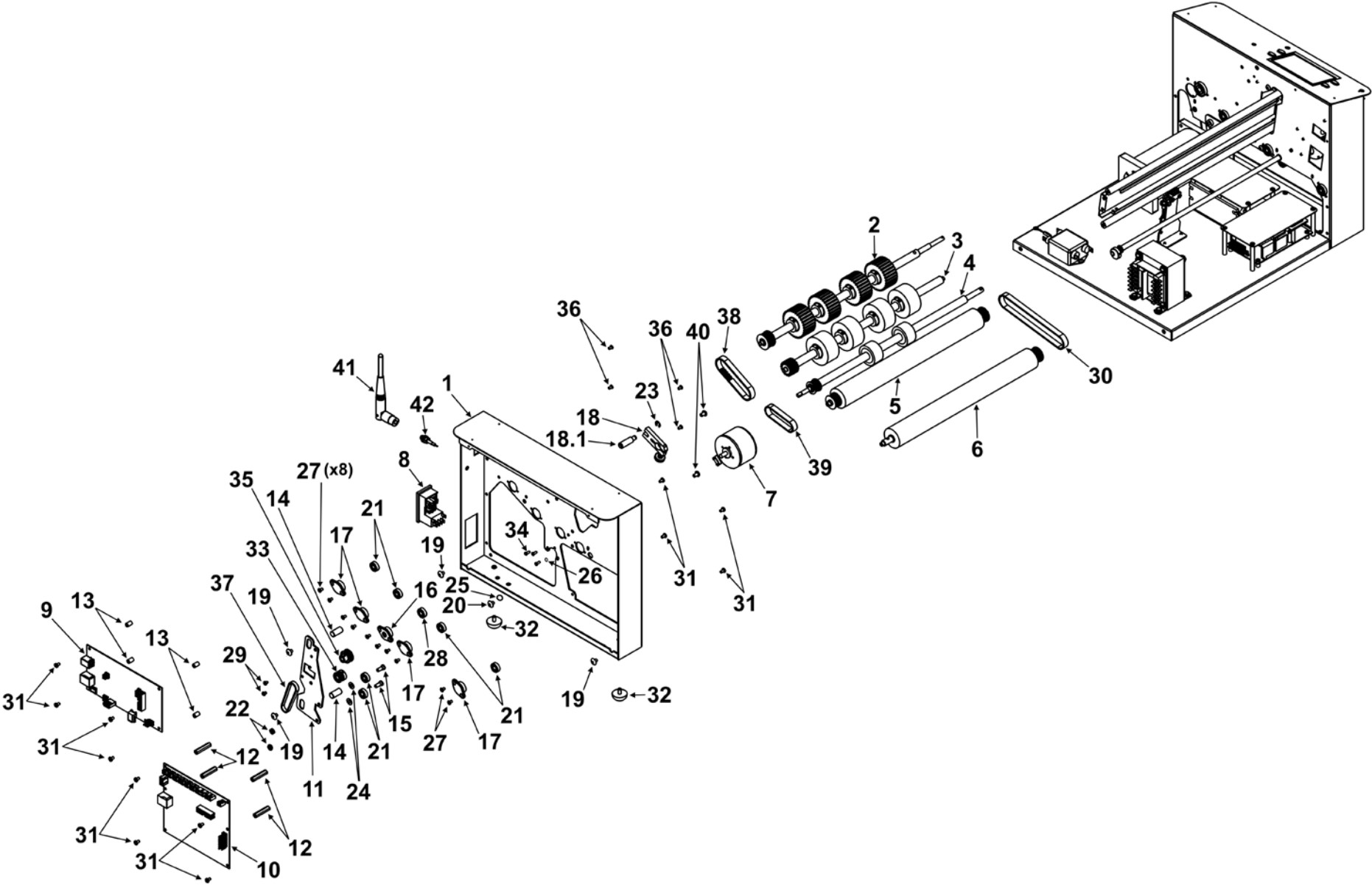


GROUP 3 MECHANICAL – OPERATOR SIDE

KEY	PART NO.	DESCRIPTION	QTY
1	36E-100-08	FRONT SIDE FRAME WELDMENT	1
2	36E-100-18	PRINTER BASE	1
3	123-1562	130V-230V AC TRANSFORMER	1
4	22-540-09	FILTER ASSEMBLY	1
5	36-500-09	MOTOR ASSEMBLY	1
6	123-1313T	12V POWER SUPPLY	1
7	123-1651	SPEED CONTROL	1
8	36-500-14	MEDIA SENSOR ASSEMBLY WIRE HARNESS	1
9	36-102-11	MEDIA SENSOR BRACKET	1
10	36E-500-22	TOUCHSCREEN CONTROL PANEL BOARD	1
11	36E-100-44	TOUCHSCREEN DISPLAY BRACKET	1
12	36E-100-45	TOUCHSCREEN DISPLAY STANDOFF	2
13		GEAR & ECC. CAM SHAFT ASSY (SEE GROUP 14)	1
14	36-105-04	FRONT NEST SIDE FRAME WELDMENT	1
14.1	44-105-32	NEST GUIDE STUD	1
14.2	44-105-33	NEST GUIDE PIN	1
15	36-500-19	12V CLUTCH ASSEMBLY	1
15.1	123-1828	DOWEL PIN, 3/21 DIA x 3/8, 18-8 SS	1
15.2	27-102-10	CLUTCH SUPPORT WASHER	1
16	32-102-22	CLUTCH PULLEY ASSEMBLY	1
16.1	123-0312	WASHER, PLASTIC, 5/16 x 1/2 x 0.030	1
16.2	29-103-08	SPRING	1
17	29-103-12	CLUTCH BRACKET	1
18	32-105-08	PULLEY, 16XL GROOVES	1
18.1	123-1956	SET SCREW, 8-32 x 5/16, SOC. HD.	1
19	123-2747	KNOB	1
19.1	35-104-24	BRAKE WHEEL	1
19.2	123-0369	SPRING PIN, 3/32 x 3/8	1
19.3	36-104-13	GEAR SHAFT	1
19.4	36-104-09	DRIVE GEAR, 17 TEETH	1
19.5	123-0695	SPRING PIN, 3/32 x 1/2	1
19.6	45-104-08	GEAR SHAFT COLLAR	1
19.7	123-0322	SET SCREW, 8-32 x 1/4 HEX SOC. CUP PT.	1
20	65-303-01	MOTOR PULLEY ASSEMBLY, 14 GROOVES	1
20.1	123-1861	SET SCREW, 10-24 x 1/4 CUP POINT	1
21	35-201-09	SCREW, SOC. HD. CAP, SS	2
22	36-104-11	BRAKE BRACKET ASSEMBLY	1

KEY	PART NO.	DESCRIPTION	QTY
23	36-103-21	POWER SUPPLY SHIELD	1
23.1	36-103-22	POWER SUPPLY SHIELD STUD	4
24	36-103-25	SPEED CONTROL SHIELD	1
24.1	36-103-26	SPEED CONTROL SHIELD STUD	4
25	95-100-32	PC BOARD STUD (FOR 12V POWER SUPPLY)	4
26	36-100-30	TENSIONER BRACKET	1
27	123-1368	BEARING, 1628-2RS	1
27.1	32-105-11	WASHER	1
27.2	123-0211	SCREW, 1/4-20 x 1-1/4 SOC. HD. CAP	1
27.3	32-105-12	STUD	1
28	90-103-50	BALL BEARING HOUSING	3
29	29-103-10	BALL BEARING HOUSING	3
30	42-101-13	STUD, 6-32 x 1/4	1
31	44-500-19	LED WIRE HARNESS ASSEMBLY	1
32	123-0017	SCREW, 10-32 x 1/4 PH, TRUSS HD.	5
33	123-0035	BEARING, NMB 4-HH	3
34	123-0050	HEX NUT, 10-32	4
35	123-0063	WASHER, 5/8 OD x 9/32 ID x 1/16	4
36	123-0064	LOCK WASHER, 1/4	4
37	123-0148	WASHER, 7/16 OD x 0.200 ID x 1/32	2
38	123-0182	SCREW, 1/4-20 x 3/4, SOC. HD. CAP, HD	4
39	123-0241	SCREW, 4-40 x 7/16 BIND HD., ZINC	2
40	123-0252	STAR WASHER, #6 EXTERNAL, ZINC	3
41	123-0261	STAR WASHER, #4 EXTERNAL	2
42	123-0274	SCREW, 6-32 x 3/8 PH, TRUSS HD.	2
43	123-0275	SCREW, 6-32 x 1/4, PH, OVAL COUNTERSINK, SS	10
44	123-0384	BEARING, NMB 608 ZZ	3
45	123-0461	SCREW, 6-32 x 3/16 PH, RD. HD., SS	4
46	123-0612	SCREW, 6-32 x 1/4, PH, PAN HD.	30
47	123-0620	RUBBER FOOT	2
48	123-1135	SCREW, 6/32 x 1/4 PH, TRUSS HD., SS	2
49	123-1178	SCREW, 6-32 x 1/4 PH, FLAT HD, UNDERCUT, SS	2
50	123-1704	PEN NUT, 1/4-20, 0.56 THICK	1
51	123-1761	SCREW, 10-32 x 3/8 HEX HD., FINE THREAD	4
52	123-2316	CLIP BEARING	1
53	123-2451	SCREW, 10-32 x 5/16, SOC. HD. BTN., 18-8 SS	2
54	123-3052	BELT, NEOPRENE, 210 XL, 105 TEETH, 3/8 WIDE	1

**GROUP 4
MECHANICAL – NON-OPERATOR SIDE**

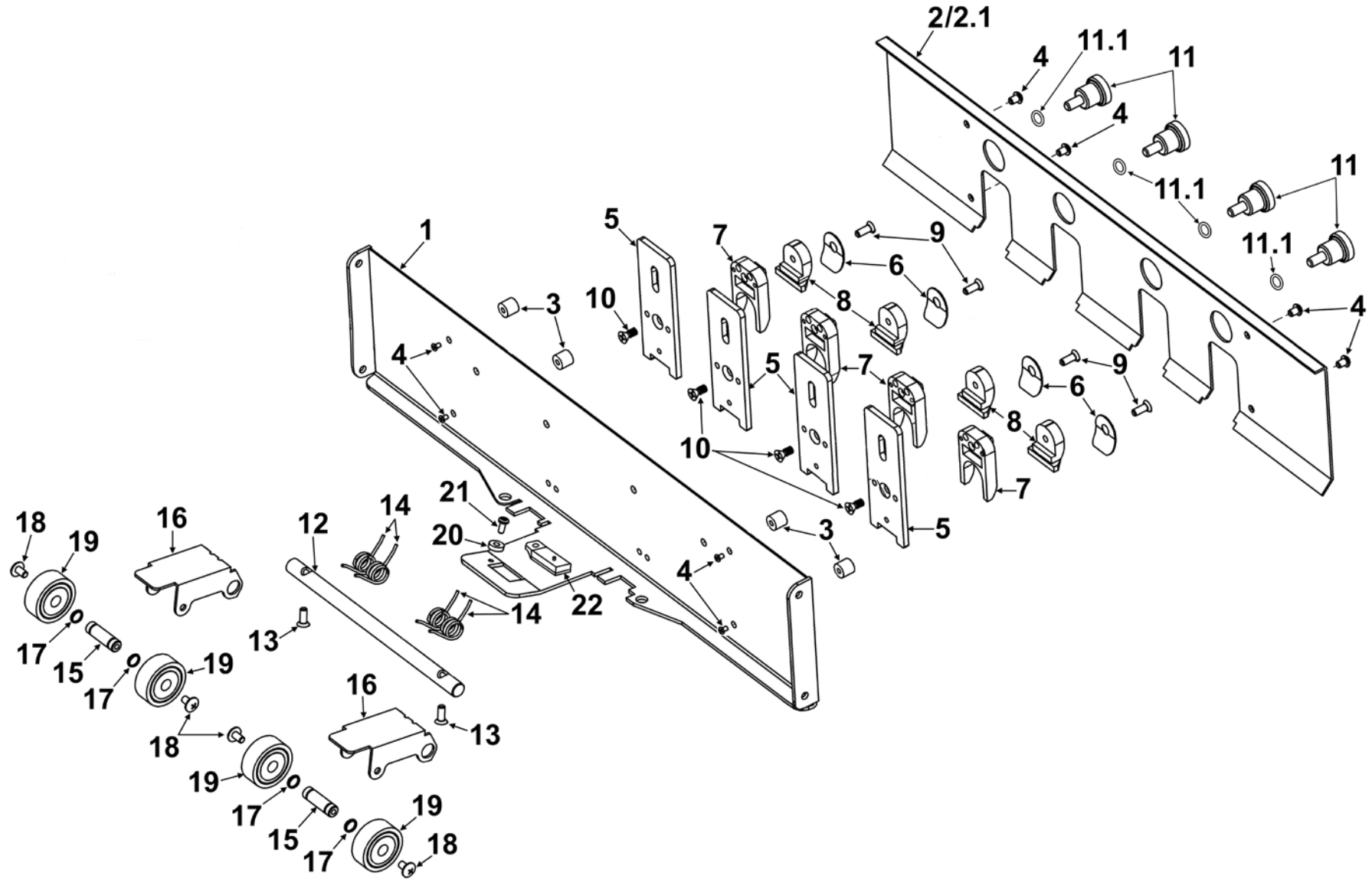


GROUP 4 MECHANICAL – NON-OPERATOR SIDE

KEY	PART NO.	DESCRIPTION	QTY
1	36E-100-04	REAR SIDE FRAME WELDMENT	1
2	36-101-04	REAR FEED SHAFT ASSEMBLY (SEE GROUP 9)	1
3	36-101-07	FRONT FEED SHAFT ASSEMBLY (SEE GROUP 10)	1
4	36-102-04	PULL-OUT ROLLER SHAFT ASSEMBLY (SEE GROUP 11)	1
5	36-103-10	INTERMEDIATE ROLLER ASSEMBLY (SEE GROUP 12)	1
6	36-103-14	EXIT ROLLER ASSEMBLY (SEE GROUP 13)	1
7	36-500-12	ENCODER ASSEMBLY	1
8	36-500-36	POWER INLET, 120 VAC	1
9	36-500-00	MAIN PC BOARD	1
10	36-500-20	I/O BOARD	1
11	36-105-06	NEST REAR SIDE FRAME	1
12	36-102-38	PC BOARD SHIELD STUD	4
13	95-100-32	PC BOARD SUPPORT	4
14	44-105-33	NEST GUIDE PIN	3
15	35-201-09	SCREW, SOC. HD. CAP	2
16	29-103-10	BALL BEARING HOUSING	1
17	90-103-50	BEARING HOUSING	4
18		BRAKE ASSEMBLY (SEE GROUP 9)	1
18.1	65-300-43	BRAKE STUD	1

KEY	PART NO.	DESCRIPTION	QTY
19	123-0017	SCREW, 10-32 x 1/4 PH, TRUSS HD.	4
20	123-0024	SCREW, 10-32 x 3/8 PH, TRUSS HD., MS	1
21	123-0035	BEARING, NMB R-4HH	6
22	123-0050	HEX NUT, 10-32 x 5/16, ZINC	2
23	123-0081	TRUARC, 1/4"	1
24	123-0148	WASHER, 7/16 OD x 0.200 ID x 1/32	2
25	123-0237	STAR WASHER, #10 EXTERNAL TOOTH	1
26	123-0261	LOCK WASHER, #4 EXTERNAL TOOTH	1
27	123-0275	SCREW, 6-32 x 1/4, PH, OVAL COUNTERSINK, SS	10
28	123-0384	BEARING, NMB 608ZZ	1
29	123-0461	SCREW, 6-32 x 3/16, PH, RND. HD.	2
30	123-0573	BELT, 130XL043	1
31	123-0612	SCREW, 6-32 x 1/4 PH, PAN HD.	12
32	123-0620	RUBBER FOOT	2
33	123-0994	PULLEY, 40 DP, 20 GROOVES	1
34	123-1023	SCREW, 4-40 x 5/16, PH, RND. HD., SS	3
35	123-1087	PULLEY, 40 DP, 26 GROOVES	1
36	123-1178	SCREW, 6-32 x 1/4 PH, UNDERCUT, SS	4
37	123-1331	BELT, 0.218 W, 40 DP, 75 GROOVES	1
38	123-1708	BELT, TIMING 80XL037	1
39	123-1950	BELT, 60XLO37	1
40	123-2451	SCREW, 10-32 x 5/16, SOC. BTN. HD., SS	2
41	123-2982	WIFI ANTENNNA	1
42	123-2983	ANTENNA BULKHEAD	1

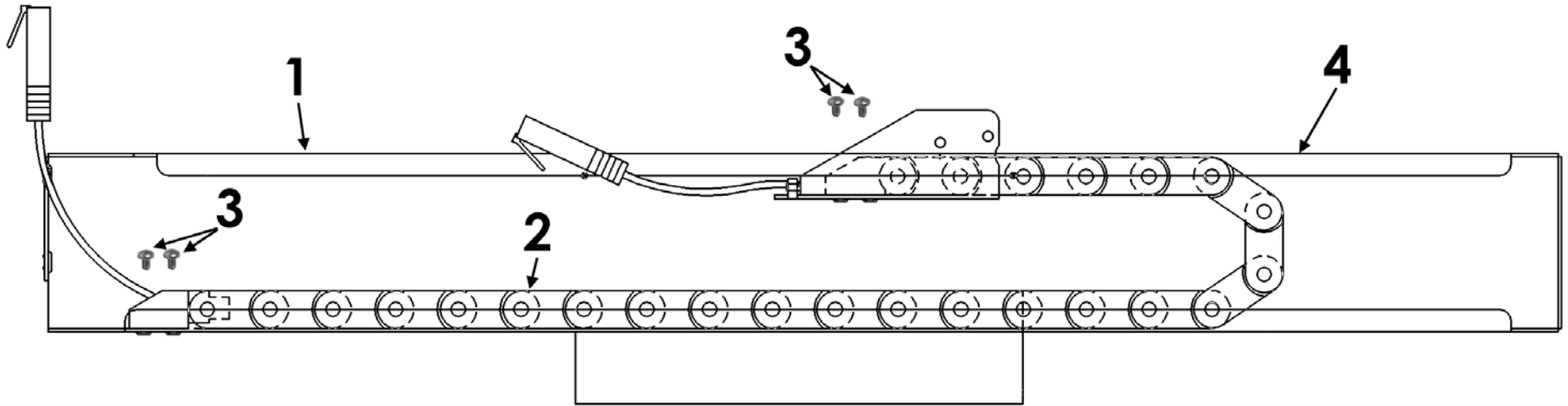
GROUP 5 METERING PLATE ASSEMBLY



GROUP 5 METERING PLATE ASSEMBLY

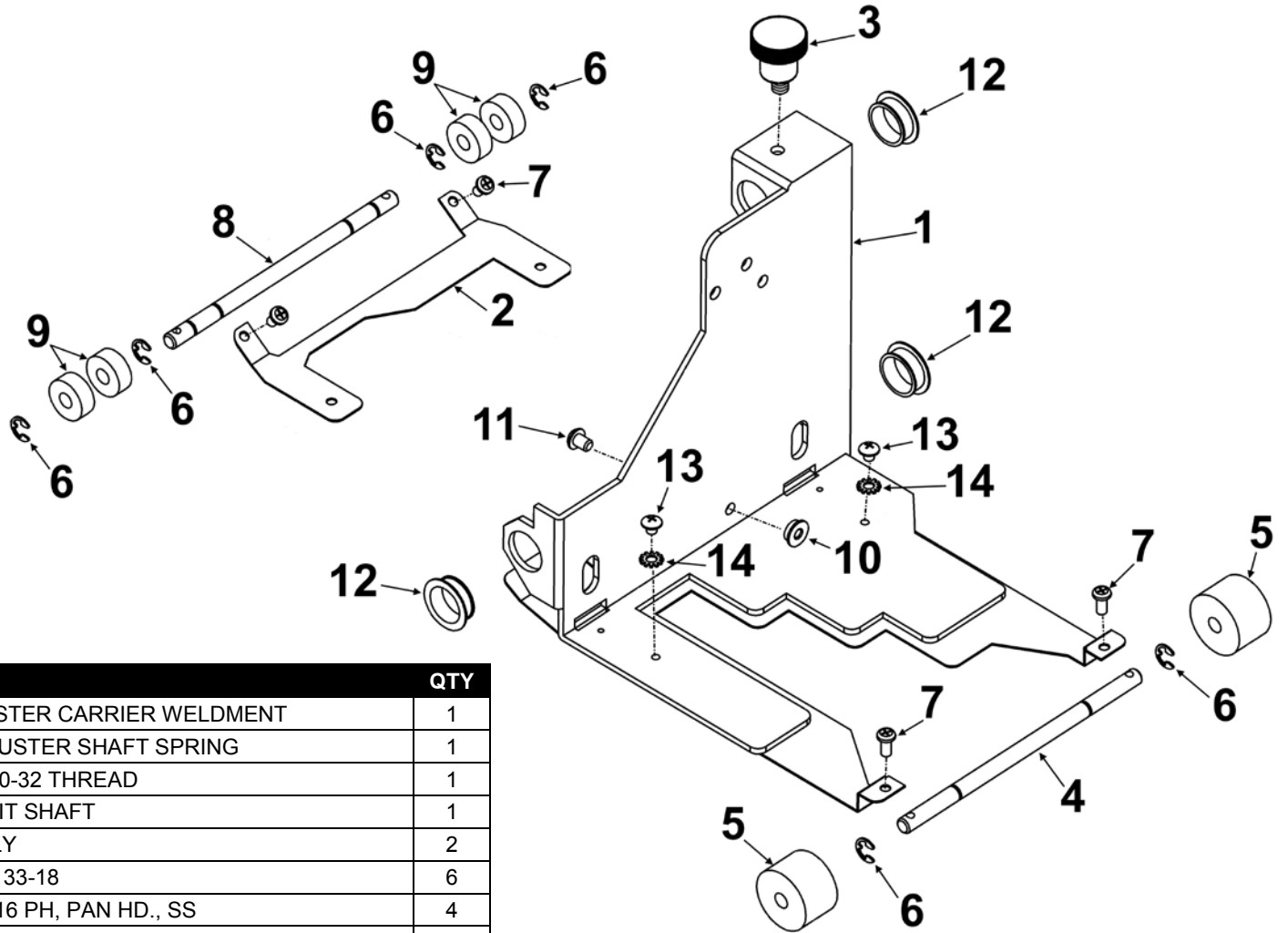
KEY	PART NO.	DESCRIPTION	QTY
1.	36-108-04	METERING PLATE	1
2.	36E-108-06	METERING PLATE COVER	1
2.1	45-106-26	SCALE POSITION DECAL	1
3.	29-101-16	SPACER	4
4.	123-0461	SCREW, 6-32 x 3/16 PH, RD. HD., ZINC	4
5.	29-101-13	METERING FINGER	4
6.	66-101-13	SEPARATOR WASHER	4
7.	21-101-15	METERING KNOB	4
8.	90-103-09S	METERING SEGMENT	4
9.	123-0751	SCREW, 6-32 x 3/8	4
10.	123-1310	SCREW, #6 x 3/8, PH, FL. SELF-TAPPING, 18-8 SS	4
11.	94-104-06	KNOB ASSEMBLY	4
11.1	123-0148	WASHER, 7/16 OD x 0.200 ID x 1/32	4
12.	27-301-11	ARM GUIDE SHAFT	1
13.	123-0446	SCREW, 8-32 x 5/16 PH, UNDERCUT, MS, SS	2
14.	21-122-08	SPRING	4
15.	21-122-06	SHAFT	2
16.	24-112-09	ARM	2
17.	123-0257	RETAINING RING, TYPE SH	4
18.	123-1135	SCREW, 6-32 x 1/4 PH, TRUSS HD.	4
19.	97-115-02	WHEEL ASSEMBLY	4
20.	36-108-08	SENSOR REFLECTOR SPACER	1
21.	123-0976	SCREW, 4-40 x 1/4 PH, PAN HD.	1
22.	123-2033A	REFLECTOR	1

GROUP 6 CABLE GUIDE ASSEMBLY



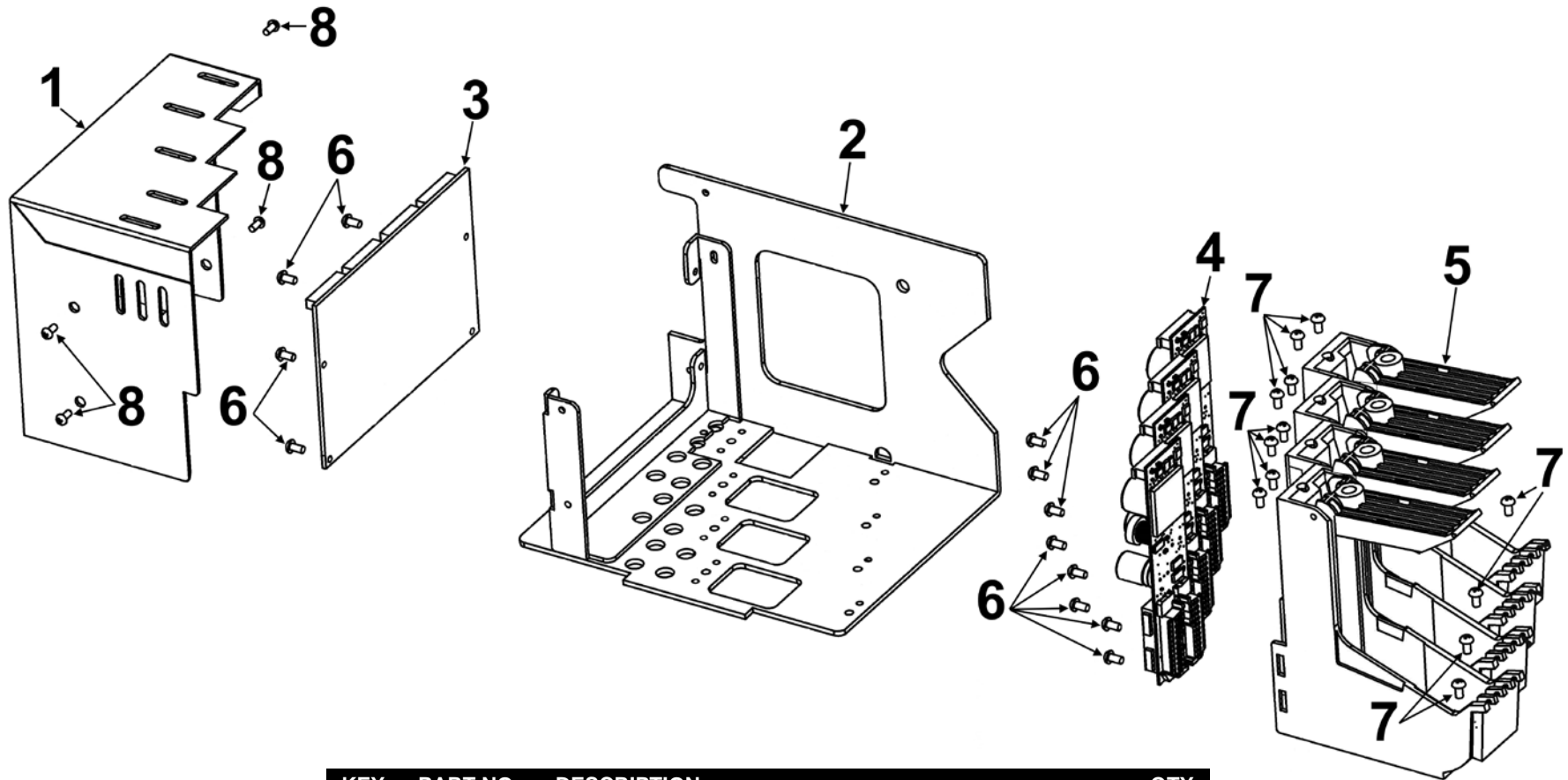
KEY	PART NO.	DESCRIPTION	QTY
1.	36-105-21	CABLE GUIDE WELDMENT	1
2.	44-105-24	CABLE CHAIN ASSEMBLY (INCLUDES CHAIN, CABLE AND BRACKET)	1
3.	123-0978	SCREW, 4-40 x 3/16 PH, PAN HD. SS	4
4.	45-106-26	SCALE POSITION DECAL	1

GROUP 7 PRINthead CARTRIDGE CARRIER



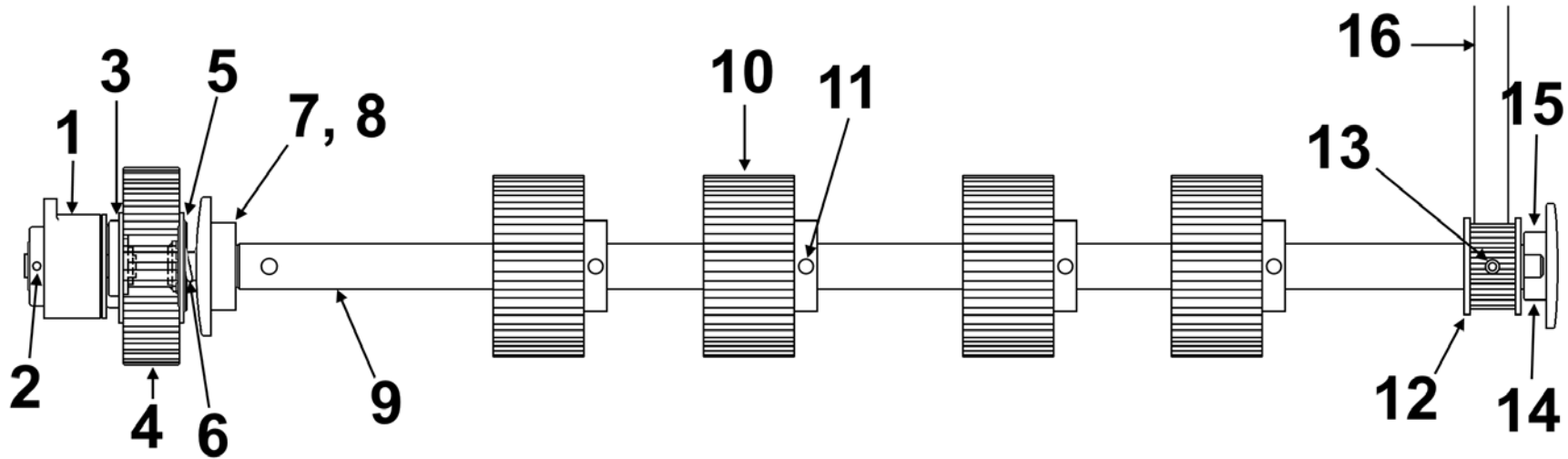
KEY	PART NO.	DESCRIPTION	QTY
1.	36-106-07	CARTRIDGE CLUSTER CARRIER WELDMENT	1
2.	36-106-24	4-CARTRIDGE CLUSTER SHAFT SPRING	1
3.	24-101-11	THUMBSCREW, 10-32 THREAD	1
4.	36-106-22	4-CARTRIDGE EXIT SHAFT	1
5.	21-144-00	WHEEL ASSEMBLY	2
6.	123-0080	3/16 TRUARC, #5133-18	6
7.	123-0978	SCREW, 4-40 x 3/16 PH, PAN HD., SS	4
8.	36-106-23	4-CARTRIDGE SHAFT	1
9.	123-0078	BEARING, NMB R3ZZ	4
10.	44-106-26	CARTRIDGE POSITIONING BUTTON	1
11.	123-0461	SCREW, 6-32 x 3/8 PH, RD. HD., SS	1
12.	123-2700	BEARING CLIP	3
13.	123-0021	SCREW, 4-40 x 1/8 PH, BTN. HD.	2
14.	123-0261	STAR WASHER, #4 EXTERNAL	2

GROUP 8 4-HEAD CARTRIDGE HOLDER ASSEMBLY



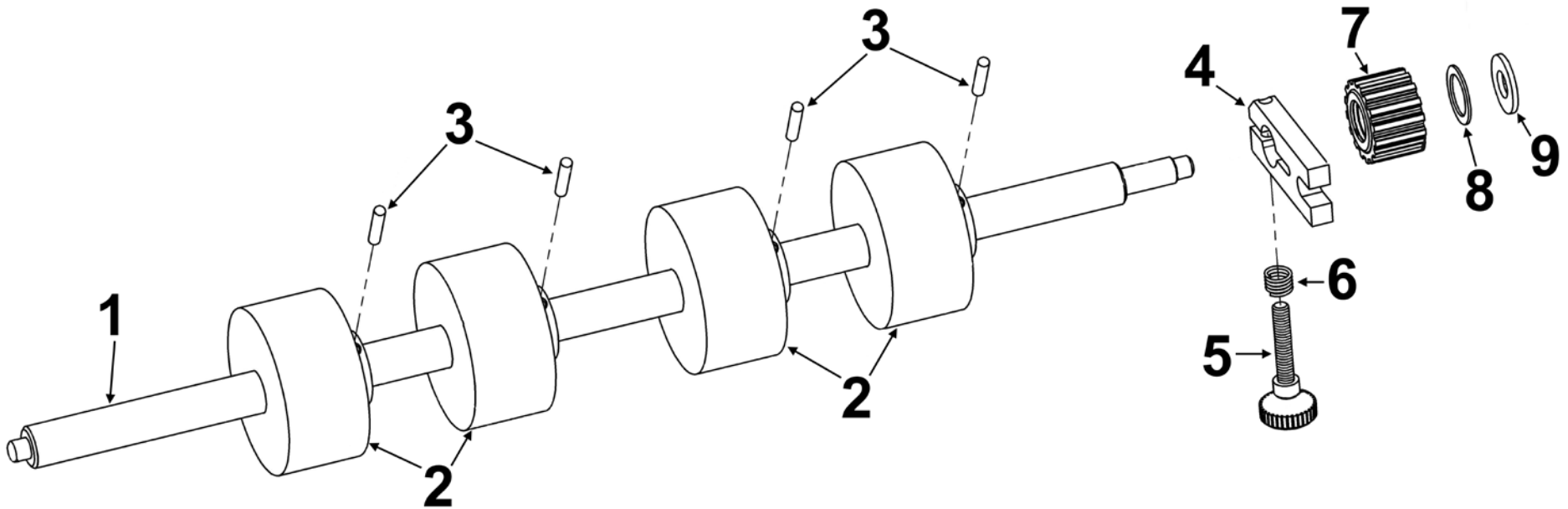
KEY	PART NO.	DESCRIPTION	QTY
1.	36-106-19	4-HEAD CARTRIDGE CLUSTER CLOSURE	1
2.	36-106-15	4-HEAD CARTRIDGE CLUSTER BODY WELDMENT	1
3.	36-500-45	4-HEAD PIN DRIVER INTERFACE PC BOARD	1
4.	123-1900	PEN DRIVER PC BOARD	4
5.	123-2898	CARTRIDGE HOLDER (INCLUDES PEN DRIVER PC BOARD MOUNTING BLOCKS AND 2 MOUNTING SCREWS)	4
6.	123-0976	SCREW, 4-40 x 1/4 PH, PAN HD.	12
7.	123-0978	SCREW, 4-40 x 3/16 PH, PAN HD., SS	12
8.	123-1323	SCREW, 4-40 x 3/16 PH, TRUSS HD., SS	4

GROUP 9 REAR FEED SHAFT



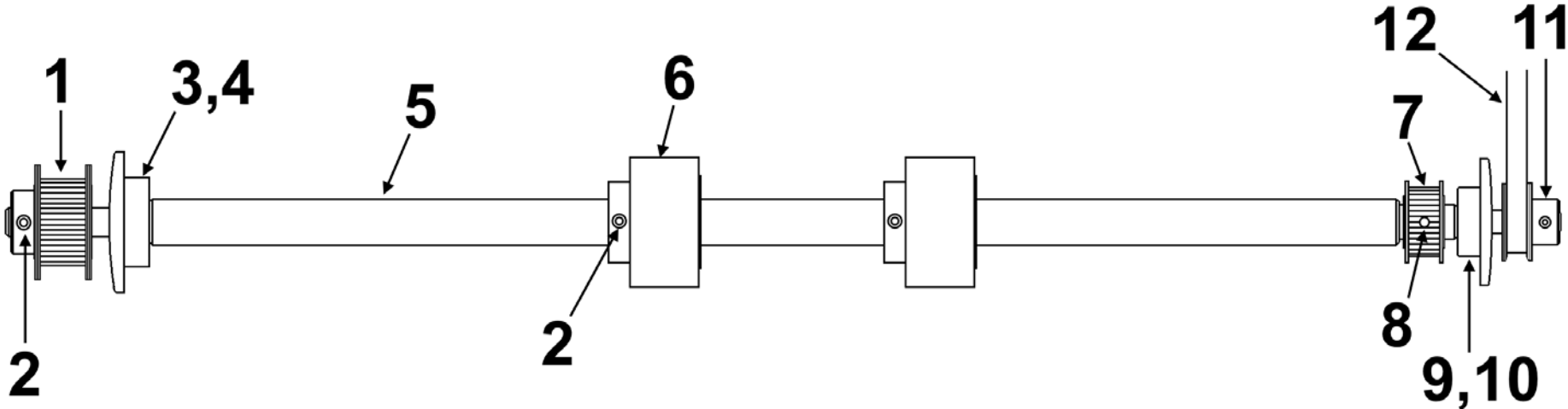
KEY	PART NO.	DESCRIPTION	QTY
1.	36-500-19	12V CLUTCH ASSEMBLY	1
2.	123-1828	DOWEL PIN, 3/32 DIA x 3/8, 18-8 SS	1
3.	27-102-10	CLUTCH SUPPORT WASHER	1
4.	32-102-22	CLUTCH PULLEY ASSEMBLY	1
5.	123-0312	WASHER, 5/16 x 1/2 x 0.30, PLASTIC	1
6.	29-103-08	SPRING	1
7.	29-103-10	BEARING HOUSING	1
8.	123-0384	BEARING, NMB 608ZZ	1
9.	36-101-05	REAR FEED SHAFT	1
10.	90-102-21C	FEED ROLLER ASSEMBLY (SERRATED TREAD)	4
11.	123-1861	SET SCREW, 10-24 x 1/4, CUP PT.	4
12.	29-103-11	PULLEY, 16-GROOVES	1
13.	123-0322	SET SCREW, 8-32 x 1/4, HEX SOC. CAP PT.	1
14.	90-103-50	BEARING HOUSING	1
15.	123-0035	BEARING, NMB R-4HH	1
16.	123-1708	BELT, 80XL037	1

GROUP 10 FRONT FEED SHAFT



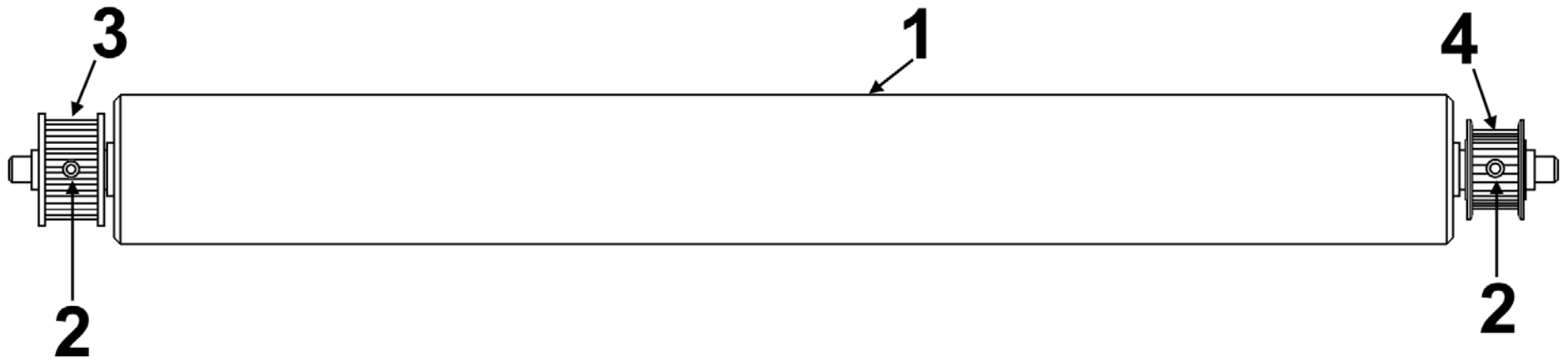
KEY	PART NO.	DESCRIPTION	QTY
1.	21-114-02	FRONT FEED SHAFT w/INNER RACE	1
2.	90-102-21	FEED ROLLER (SMOOTH TREAD)	4
3.	123-1861	SET SCREW, 10-24 x 1/4 CUP PT.	4
4.	36-101-09	BRAKE	1
5.	63-108-05	BRAKE THUMBSCREW	1
6.	63-108-09	FEED ROLLER BRAKE SPRING	1
7.	94-105-04	PULLEY ASSEMBLY, 16 GROOVES (NUMBERS FACE WASHERS)	1
8.	63-105-15	WASHER, SS	1
9.	123-0567	WASHER, SS	1

**GROUP 11
PULL-OUT ROLLER SHAFT**



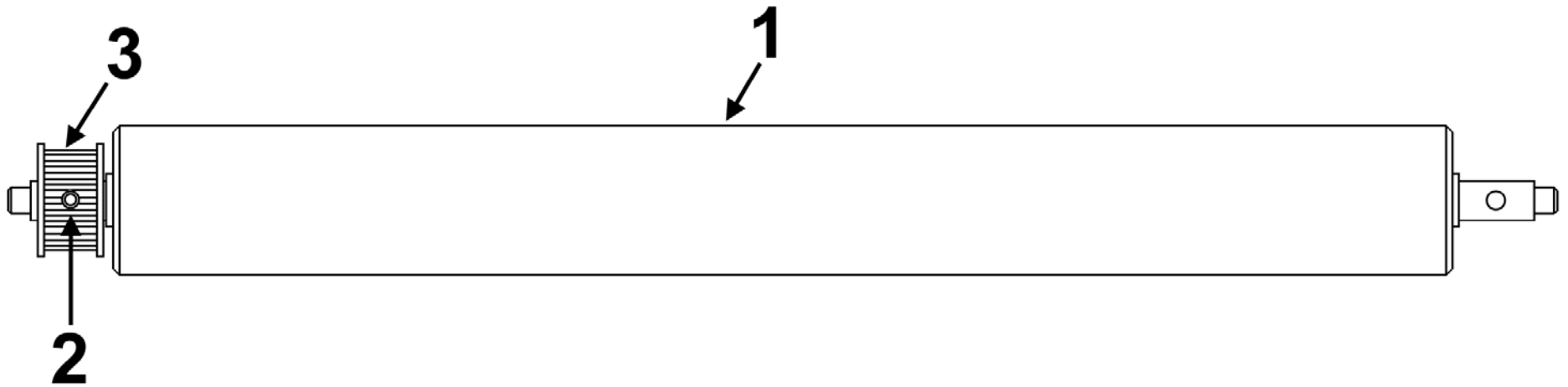
KEY	PART NO.	DESCRIPTION	QTY
1.	32-105-08	PULLEY, 16XL GROOVES	1
2.	123-1956	SET SCREW, 8-32 x 5/16, SOC. HD.	3
3.	29-103-10	BEARING HOUSING	1
4.	123-0384	BEARING, NMB 608ZZ	1
5.	36-102-05	PULL-OUT ROLLER SHAFT	1
6.	56-101-17	PULL-OUT ROLLER	2
7.	20-106-09	PULLEY ASSEMBLY, 12 XL GROOVES	1
8.	123-0036	ROLL PIN, 3/32 x 5/8	1
9.	90-103-61	BEARING HOUSING	1
10.	123-0035	BEARING, NMB R-4HH	1
11.	123-1087	PULLEY, 40 DP, 26 GROOVES (INCLUDES SET SCREW)	1
12.	123-1331	BELT, 0.218 W, 40 DP, 75 GROOVES	1

**GROUP 12
INTERMEDIATE ROLLER SHAFT**



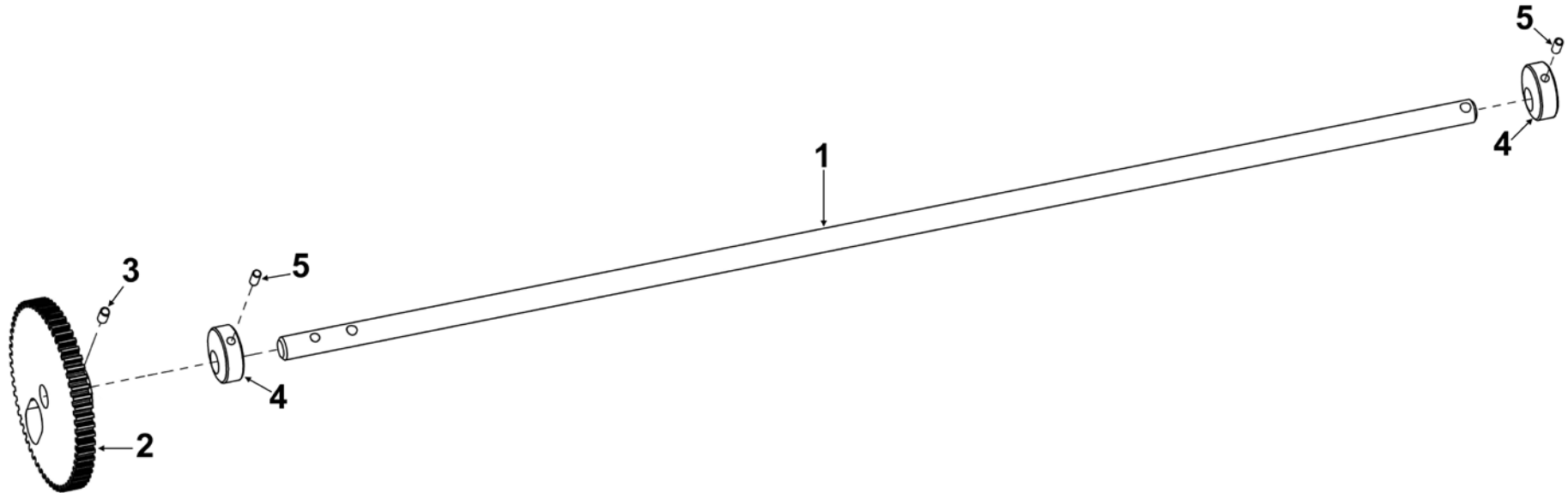
KEY	PART NO.	DESCRIPTION	QTY
1.	29-105-02	INTERMEDIATE ROLLER ASSEMBLY	1
2.	123-0322	SET SCREW, 8-32 x 1/4 SOC.	2
3.	32-105-17	PULLEY, 15 GROOVES	1
4.	41-106-36	PULLEY, 12XL GROOVES	1

**GROUP 13
EXIT ROLLER SHAFT**



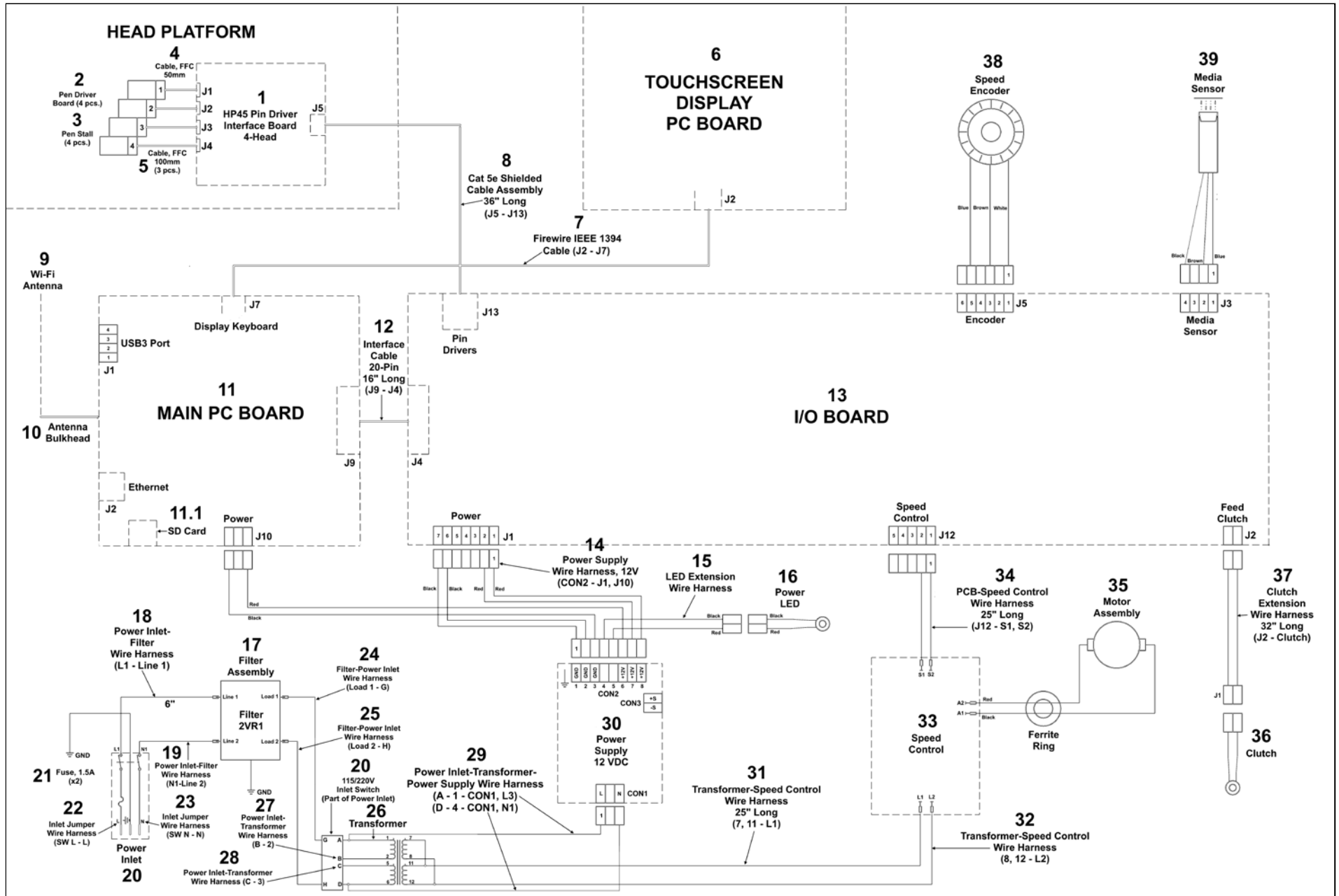
KEY	PART NO.	DESCRIPTION	QTY
1.	29-105-02	INTERMEDIATE ROLLER ASSEMBLY	1
2.	123-0322	SET SCREW, 8-32 x 1/4 SOC.	1
3.	32-105-17	PULLEY, 15 GROOVES	1

GROUP 14 GEAR AND ECCENTRIC CAM SHAFT



KEY	PART NO.	DESCRIPTION	QTY
1.	36-104-05	GEAR & ECCENTRIC CAM SHAFT	1
2.	44-104-21	GEAR, 24 TEETH, 24P	1
3.	123-0034	ROLL PIN	1
4.	94-124-13	ECCENTRIC CAM ASSEMBLY	2
5.	123-0757	SET SCREW, 6-32 x 1/4, STD. CUP PT.	2

GROUP 15 WIRING DIAGRAM



GROUP 15 WIRING DIAGRAM

KEY	PART NO.	DESCRIPTION	QTY
1.	36-500-45	PEN DRIVER INTERFACE BOARD (4-HEAD)	1
2.	123-1900	PEN DRIVER BOARD	4
3.	123-2085	PEN STALL	4
4.	123-2736	FFC CABLE, 50mm	1
5.	123-2737	FFC CABLE, 100mm	3
6.	36E-500-22	TOUCHSCREEN DISPLAY BOARD	1
7.	123-2882	FIREWIRE IEEE 1394 CABLE (J2 - J7)	1
8.	44-105-24	CAT 5E SHIELDED CABLE ASSY. 36" LONG (J5 - J13)	1
9.	123-2982	WI-FI ANTENNA	1
10.	123-2983	ANTENNA BULKHEAD	1
11.	36-500-00	MAIN PC BOARD	1
11.1	36E-500-50	PROGRAMMED SD CARD	1
12.	36-500-23	INTERFACE CABLE, 20-PIN, 16" LONG (J9 - J4)	1
13.	36-500-20	I/O BOARD	1
14.	36-500-08	12V POWER SUPPLY WIRE HARNESS (CON2 - J1, J10)	1
15.	36-500-21	LED EXTENSION WIRE HARNESS	1
16.	44-500-19	LED POWER INDICATOR	1
17.	22-540-09	FILTER ASSEMBLY	1
18.	36-500-01	POWER INLET-FILTER WIRE HARNESS (L1 - LINE 1)	1
19.	36-500-02	POWER INLET-FILTER WIRE HARNESS (N1 - LINE 2)	1
20.	36-500-36	POWER INLET	1
21.	123-1244	FUSE, 1.6A, 250V	2
22.	36-500-34	POWER INLET -JUMPER WIRE HARNESS (SW L - L)	1
23.	36-500-37	POWER INLET-JUMPER WIRE HARNESS (SW N - N)	1
24.	36-500-04	FILTER-POWER INLET WIRE HARNESS (LOAD 1 - G)	1
25.	36-500-03	FILTER-POWER INLET WIRE HARNESS (LOAD 2 - H)	1
26.	123-1562	130V-230V AC TRANSFORMER	1

KEY	PART NO.	DESCRIPTION	QTY
27.	36-500-32	POWER INLET- TRANSFORMER WIRE HARNESS (B - 2)	1
28.	36-500-33	POWER INLET- TRANSFORMER WIRE HARNESS (C -3)	1
29.	36-500-05	POWER INLET-TRANSFORMER-POWER SUPPLY WIRE HARNESS (A - 1 - CON 1, L3), (D - 4 - CON 1, N1)	1
30.	123-1313T	12 VDC POWER SUPPLY	1
31.	36-500-06	TRANSFORMER-SPEED CONTROL WIRE HARNESS (7, 11 - L1)	1
32.	36-500-07	TRANSFORMER-SPEED CONTROL WIRE HARNESS (8, 12 - L2)	1
33.	123-1651	SPEED CONTROL	1
34.	36-500-11	PC BOARD-SPEED CONTROL WIRE HARNESS (J12 - S1, S2)	1
35.	36-500-09	MOTOR ASSEMBLY	1
36.	36-500-19	12V CLUTCH ASSEMBLY	1
37.	36-500-13	CLUTCH EXTENSION WIRE HARNESS (J2-CLUTCH)	1
38.	36-500-12	SPEED ENCODER (TO J5)	1
39.	36-500-14	MEDIA SENSOR (TO J3)	1
POWER CORDS AND USB, ETHERNET CABLES (*NOT SHOWN)			
*	123-0635	100-115V POWER CORD, 6 FT. DOMESTIC/JAPAN	1
*	123-0735	220V POWER CORD, EUROPE	1
*	123-2187	220V POWER CORD, CHINA	1
*	123-2407	220V POWER CORD, UK	1
*	123-1895	USB CABLE, 10 FT.	1
*	123-2525	ETHERNET CABLE, 10 FT.	1

CONSUMABLES, NORMAL WEAR AND SPARE PARTS

PART NO.	DESCRIPTION	QTY PER PRINTER
MECHANICAL PARTS		
123-0573	BELT, 130XL043 (INTERMEDIATE AND EXIT ROLLERS)	1
123-1331	BELT, 0.218 W, 40 DP, 75 GROOVES (ENCODER TO PULL OUT ROLLER SHAFT)	1
123-1708	BELT, TIMING 80XL037 (FRONT AND REAR FEED ROLLERS)	1
123-3052	BELT, NEOPRENE, 210 XL, 105 TEETH, 3/8 WIDE (MAIN MOTOR BELT)	1
123-3054	BELT, 200 XL PITCH x 5/16" W, 30 TEETH (PULL OUT AND INTERMEDIATE ROLLERS)	1
90-103-50	BEARING HOUSING	7
90-103-61	BEARING HOUSING (PULL-OUT ROLLER SHAFT)	2
123-0035	BEARING, NMB R-4HH	9
29-103-10	BALL BEARING HOUSING (REAR FEED AND PULL-OUT ROLLER SHAFTS)	2
123-0384	BEARING, NMB 608ZZ	2
90-103-09S	METERING SEGMENT (METERING PLATE ASSEMBLY)	4
97-115-02	WHEEL ASSEMBLY (METERING PLATE ASSEMBLY)	4
123-0078	BEARING, NMB R3ZZ (PRINthead CARTRIDGE CARRIER)	4
21-144-00	WHEEL ASSEMBLY (PRINthead CARTRIDGE CARRIER)	2
123-2898	INK CARTRIDGE HOLDER (INCLUDES PEN DRIVER PC BOARD MOUNTING BLOCKS AND 2 MOUNTING SCREWS)	4
90-102-21C	FEED ROLLER ASSEMBLY (SERRATED TREAD) (REAR FEED SHAFT)	4
90-102-21	FEED ROLLER (SMOOTH TREAD) (FRONT FEED ROLLER SHAFT)	4
123-1861	SET SCREW, 10-24 x 1/4 CUP PT. (FRONT AND REAR FEED ROLLER SHAFTS)	8
56-101-17	PULL-OUT ROLLER	2
123-1956	SET SCREW, 8-32 x 5/16, SOC. HD.	2
29-105-02	INTERMEDIATE ROLLER ASSEMBLY (INTERMEDIATE AND EXIT ROLLERS)	2

PART NO.	DESCRIPTION	QTY PER PRINTER
ELECTRICAL PARTS		
123-1313T	12 VDC POWER SUPPLY	1
123-1651	SPEED CONTROL	1
123-1562	130V -230V AC TRANSFORMER	1
123-1244	FUSE, 1.6A, 250V	2
123-1900	HP PEN DRIVER PC BOARD	1
123-2085	PEN STALL	4
123-2736	RIBBON CABLE, 50mm	1
123-2737	RIBBON CABLE, 100mm	3
26-500-14	MEDIA SENSOR	1
36-500-19	12V CLUTCH ASSEMBLY	1
36-500-00	MAIN PC BOARD	1
36-500-09	MOTOR ASSEMBLY	1
36-500-12	ENCODER	1
36-500-20	I/O BOARD	1
36-500-36	POWER INLET	1
36-500-45	PEN DRIVER INTERFACE BOARD (4-HEAD)	1
36E-500-22	TOUCHSCREEN DISPLAY BOARD	1
36E-500-50	PROGRAMMED SD CARD	1
POWER CORDS AND USB, ETHERNET CABLES		
123-0635	100-115V POWER CORD, 6 FT. DOMESTIC/JAPAN	1
123-0735	220V POWER CORD, EUROPE	1
123-2187	220V POWER CORD, CHINA	1
123-2407	220V POWER CORD, UK	1
123-1895	USB CABLE, 10 FT.	1
123-2525	ETHERNET CABLE, 10 FT.	1

INDEX

PART NO.	GROUP	KEY	PART NO.	GROUP	KEY	PART NO.	GROUP	KEY
123-0017	1	14	123-0384	9	8	123-1562	15	26
123-0017	2	29	123-0384	11	4	123-1651	3	7
123-0017	3	32	123-0446	5	13	123-1651	15	33
123-0017	4	19	123-0461	3	45	123-1704	3	50
123-0021	7	13	123-0461	4	29	123-1708	4	38
123-0024	1	15	123-0461	5	4	123-1708	9	16
123-0024	2	30	123-0461	7	11	123-1761	3	51
123-0024	4	20	123-0567	10	9	123-1828	3	15.1
123-0034	14	3	123-0573	4	30	123-1828	9	2
123-0035	3	33	123-0612	1	17	123-1861	3	20.1
123-0035	4	21	123-0612	2	34	123-1861	9	11
123-0035	9	15	123-0612	3	46	123-1861	10	3
123-0035	11	10	123-0612	4	31	123-1895	15	--
123-0036	11	8	123-0620	1	18	123-1900	8	4
123-0050	3	34	123-0620	2	35	123-1900	15	2
123-0050	4	22	123-0620	3	47	123-1950	4	39
123-0063	3	35	123-0620	4	32	123-1956	3	18.1
123-0064	3	36	123-0635	15	--	123-1956	11	2
123-0078	7	9	123-0695	3	19.5	123-2033A	5	22
123-0080	7	6	123-0735	15	--	123-2085	15	3
123-0081	4	23	123-0751	5	9	123-2187	15	--
123-0148	2	31	123-0757	14	5	123-2316	2	39
123-0148	3	37	123-0976	5	21	123-2316	3	52
123-0148	4	24	123-0976	8	6	123-2407	15	--
123-0148	5	11.1	123-0978	6	3	123-2451	3	53
123-0182	3	38	123-0978	7	7	123-2451	4	40
123-0237	1	16	123-0978	8	7	123-2525	15	--
123-0237	2	32	123-0994	4	33	123-2700	7	12
123-0237	4	25	123-1023	4	34	123-2736	15	4
123-0211	3	27.2	123-1087	4	35	123-2737	15	5
123-0241	3	39	123-1087	11	11	123-2747	3	19
123-0252	2	33	123-1135	3	48	123-2882	15	7
123-0252	3	40	123-1135	5	18	123-2898	8	5
123-0257	5	17	123-1136	1	19	123-2982	2	40
123-0261	3	41	123-1136	2	36	123-2982	4	41
123-0261	4	26	123-1158	1	20	123-2982	15	9
123-0261	7	14	123-1178	1	21	123-2983	2	41
123-0274	3	42	123-1178	2	37	123-2983	4	42
123-0275	3	43	123-1178	3	49	123-2983	15	10
123-0275	4	27	123-1178	4	36	123-3052	3	54
123-0312	3	16.1	123-1244	15	21	123-3072	1	22
123-0312	9	5	123-1257	2	38	123-3072	2	42
123-0322	3	19.7	123-1310	5	10	20-100-36	1	13
123-0322	9	13	123-1313T	3	6	20-100-36	2	26
123-0322	12	2	123-1313T	15	30	20-100-37	1	11
123-0322	13	2	123-1323	8	8	20-100-37	2	24
123-0369	3	19.2	123-1331	4	37	20-103-06	2	28
123-0384	3	44	123-1331	11	12	20-106-09	11	7
123-0384	4	28	123-1368	3	27	21-101-15	5	7
			123-1562	3	3			

INDEX

PART NO.	GROUP	KEY	PART NO.	GROUP	KEY	PART NO.	GROUP	KEY
21-114-02	10	1	36-102-05	11	5	36-500-14	15	39
21-122-06	5	15	36-102-11	3	9	36-500-19	3	15
21-122-08	5	14	36-102-38	4	12	36-500-19	9	1
21-144-00	7	5	36-103-04	1	7	36-500-19	15	36
22-100-31	2	27	36-103-04	2	9	36-500-20	4	10
22-100-36	1	12	36-103-10	4	5	36-500-20	15	13
22-100-36	2	25	36-103-14	4	6	36-500-21	15	15
22-540-09	3	4	36-103-21	3	23	36-500-23	15	12
22-540-09	15	17	36-103-22	3	23.1	36-500-32	15	27
24-101-11	1	5.2	36-103-25	3	24	36-500-33	15	28
24-101-11	2	18	36-103-26	3	24.1	36-500-34	15	22
24-101-11	7	3	36-104-05	14	1	36-500-36	2	23
24-112-09	5	16	36-104-09	3	19.4	36-500-36	4	8
27-102-10	3	15.2	36-104-11	3	22	36-500-36	15	20
27-102-10	9	3	36-104-13	3	19.3	36-500-37	15	23
27-301-11	5	12	36-105-06	4	11	36-500-45	8	3
29-101-13	5	5	36-105-04	3	14	36-500-45	15	1
29-101-16	5	3	36-105-21	6	1	36E-100-04	1	3
29-103-08	3	16.2	36-106-07	7	1	36E-100-04	2	3
29-103-08	9	6	36-106-14	1	5	36E-100-04	4	1
29-103-10	4	16	36-106-14	2	7	36E-100-08	1	2
29-103-10	3	29	36-106-15	8	2	36E-100-08	2	2
29-103-10	9	7	36-106-19	8	1	36E-100-08	3	1
29-103-10	11	3	36-106-22	7	4	36E-100-18	1	1
29-103-11	9	12	36-106-23	7	8	36E-100-18	2	1
29-103-12	3	17	36-106-24	7	2	36E-100-18	3	2
29-105-02	12	1	36-107-05	2	13	36E-100-22	2	6
29-105-02	13	1	36-107-09	2	14	36E-100-26	2	5
29-106-10	2	15	36-107-14	2	19	36E-100-31	1	4
32-102-22	3	16	36-107-18	2	16	36E-100-34	2	4
32-102-22	9	4	36-107-19	2	17	36E-100-45	3	12
32-105-08	3	18	36-108-04	5	1	36E-100-44	3	11
32-105-08	11	1	36-500-00	4	9	36E-108-06	5	2
32-105-11	3	27.1	36-500-00	15	11	36E-108-08	5	20
32-105-12	3	27.3	36-500-01	15	18	36E-500-22	3	10
32-105-17	12	3	36-500-02	15	19	36E-500-22	15	6
32-105-17	13	3	36-500-03	15	25	36E-500-50	15	11.1
35-104-24	3	19.1	36-500-04	15	24	41-106-36	12	4
35-201-09	4	15	36-500-05	15	29	42-101-13	3	30
35-201-09	3	21	36-500-06	15	31	42-107-17	1	22
35-211-19	2	22	36-500-07	15	32	42-107-17	2	20
36-100-19	1	6	36-500-08	15	14	44-104-21	14	2
36-100-19	2	8	36-500-09	3	5	44-105-20	1	8
36-100-30	3	26	36-500-09	15	35	44-105-20	2	10
36-101-04	4	2	36-500-11	15	34	44-105-24	6	2
36-101-05	9	9	36-500-12	4	7	44-105-24	15	8
36-101-07	4	3	36-500-12	15	38	44-105-28	1	9
36-101-09	10	4	36-500-13	15	37	44-105-28	2	11
36-102-04	4	4	36-500-14	3	8	44-105-28	3	13

INDEX

PART NO.	GROUP	KEY
44-105-32	3	14.1
44-105-33	3	14.2
44-105-33	4	14
44-106-26	7	10
44-500-19	3	31
44-500-19	15	16
45-104-08	3	19.6
45-106-26	5	2.1
45-106-26	6	4
56-101-17	11	6
63-105-15	10	8
63-108-05	10	5
63-108-09	10	6
65-300-43	4	18.1
65-303-01	3	20
66-101-13	5	6
90-102-21	10	2
90-102-21C	9	10
90-103-09S	5	8
90-103-50	3	28
90-103-50	4	17
90-103-50	9	14
90-103-61	11	9
94-104-06	2	21
94-104-06	5	11
94-105-05	10	7
94-124-13	14	4
95-100-32	3	25
95-100-32	4	13
97-115-02	5	19