



atlas-TRIO15

MULTI-FUNCTION SLITTER/CUTTER/CREASER



- Cuts, slits, and creases in a single pass
- Stores up to 150 custom jobs
- 4" color touchscreen
- Up to 5,000 sheets/hour for single-crease
- Processes sheets up to 13" W x 27.5" L

FORMAX®

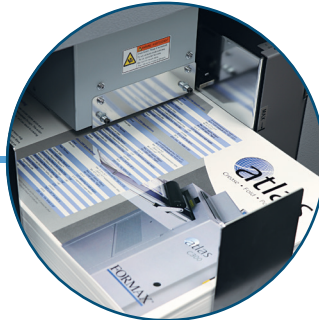
www.formax.com

Local Dealer:

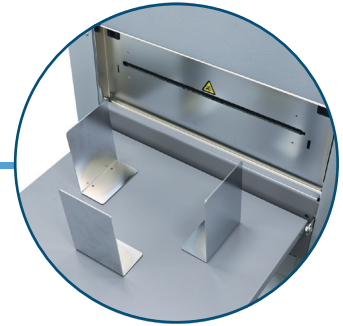
The **ATLAS-TRIO15** is ideal for on-demand finishing of jobs including business cards, postcards, brochures, and booklet covers. It **slits, cuts, and creases in a single streamlined process**, and handles **sheets up to 13" W x 27.5" L**, in weights up to 350gsm. The **4" touchscreen control panel** allows users to **store up to 150 custom jobs**, and has three modes for operator convenience: **Preset, Manual, and Flex mode** for the greatest customization. Standard features include an **automatically elevating feed table** for accuracy, **upper-belt tri-suction feeding system**, **double-feed detection**, **cut-mark sensor**, **side alignment guide**, and two standard slitting guides. **Custom slitting guides** and a **long sheet kit** are also available.



4" Color Touchscreen
Program and make adjustments easily with graphics-based menus



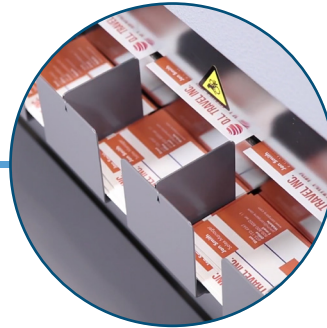
Upper-Belt Tri-Suction Feed
Automatically elevates to separate printed sheets to prevent misfeeds



Adjustable Catch Tray
Accommodates business cards and custom job sizes



Cut-Mark Sensor
Reads any image drift, then registers to ensure consistent finishing



Super Fast Processing
Cuts up to 250 business cards in less than two minutes

STANDARD FEATURES

- Cuts/slits up to eight 12x18" sheets/hour
- Creases up to 5,000 8.5x11" sheets/hour
- Upper-belt tri-suction feed system
- 4" color touchscreen
- Pre-set and programmable jobs
- Slit, cut and crease in a single pass
- Elevating feed table prevents misfeeds
- Two standard slitting guides
- Cut-mark sensor
- Double-feed detection
- Handles large and heavy stocks

OPTIONS

- Custom slitting guides: Designed to match specific job needs
- Long sheet kit: Accommodates paper sizes up to 13"W x 27.5" L

SPECIFICATIONS

Speed	24-up business cards, up to 8 sheets/min 4-up postcards (12" x 18"), up to 10 sheets/min 2 cut / 2 slit / 1 crease (8.5" x 11"), up to 15 sheets/min 1 crease (8.5" x 11"), up to 5,000 sheets/hour
Feed Capacity	Pile height up to 4"
Paper Sizes	8" - 13" W x 8" - 19" L (203 - 330mm/483mm) 13" W x 27.5" L w/optional long sheet kit (330 x 699mm w/optional long sheet kit)
Paper Weight	32# bond - 130# cover (120-350gsm)
Programmable Jobs	Up to 150
Dimensions	33" W x 31" D x 43" H (838 x 787 x 1092mm)
Dimensions w/outfeed stacker	63" W x 31" D x 43" H (1600 x 787 x 1092mm)
Weight	440 lbs (200kg)
Power	120 VAC

* Speed varies depending on paper weight