

# FORMAX<sup>®</sup>

---

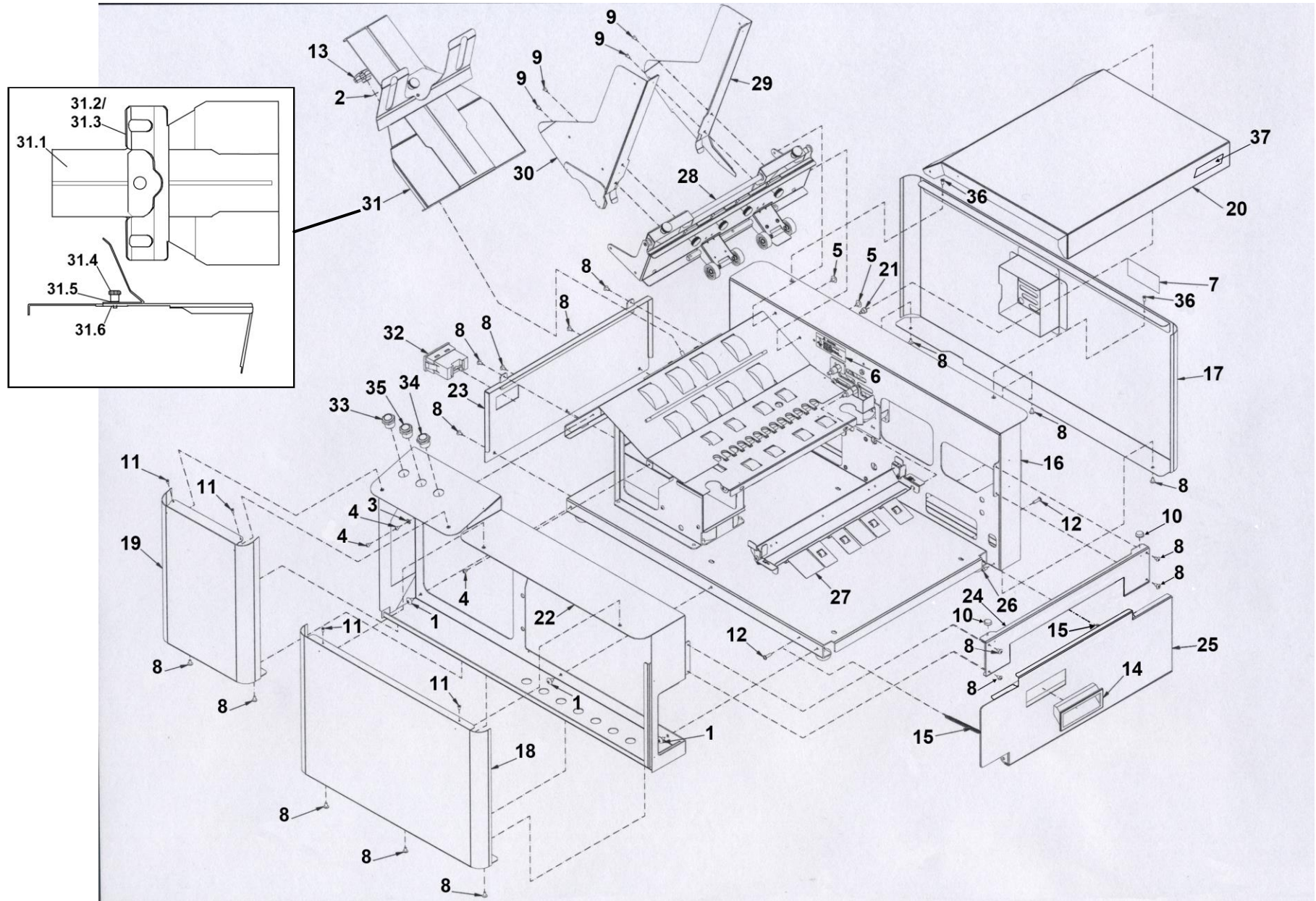
ColorMax7  
Digital Color Printer



# TABLE OF CONTENTS

	PAGE #
GROUP 1 – MECHANICAL ASSEMBLY .....	4
GROUP 2 – MECHANICAL ASSEMBLY .....	6
GROUP 2.1 – MECHANICAL ASSEMBLY .....	8
GROUP 3 – PRINT ENGINE - FRONT .....	10
GROUP 3.1 – PRINT ENGINE - REAR .....	11
GROUP 3.2 – PRINT ENGINE – COMPONENTS .....	14
GROUP 3.3 – PRINT ENGINE – COMPONENTS .....	16
GROUP 3.4 – PRINT ENGINE – COMPONENTS .....	18
GROUP 3.5 – PRINT ENGINE – UPPER MAIN PLATEN ASSEMBLY .....	19
GROUP 4 – FRONT FEED SHAFT ASSEMBLY .....	20
GROUP 5 – REAR FEED SHAFT ASSEMBLY .....	22
GROUP 6 – DELIVERY SHAFT ASSEMBLY .....	23
GROUP 7 – PULL-OUT SHAFT ASSEMBLY .....	24
GROUP 8 – FRONT CENTER PLATE ASSEMBLY .....	25
GROUP 9 – METERING PLATE ASSEMBLY.....	26
GROUP 10 – ARM GUIDE BRACKET ASSEMBLY.....	28
GROUP 11 – HOLD DOWN MEDIA BRACKET (ANTISTATIC BRUSH) ASSEMBLY .....	29
GROUP 12 – ELECTRICAL (Z2I PRINT ENGINE).....	30
GROUP 12A – ELECTRICAL (Z3/Z4/MR PRINT ENGINE).....	32
OVERLAYS & DECALS.....	34
RECOMMENDED SPARE PARTS .....	35
NORMAL WEAR & CONSUMABLE PARTS.....	37
SUPPLIES .....	37
PACKING MATERIALS .....	37
SCREWS KIT (PART NO. 42-900-120) .....	38
INDEX .....	39

# GROUP 1 – MECHANICAL ASSEMBLY

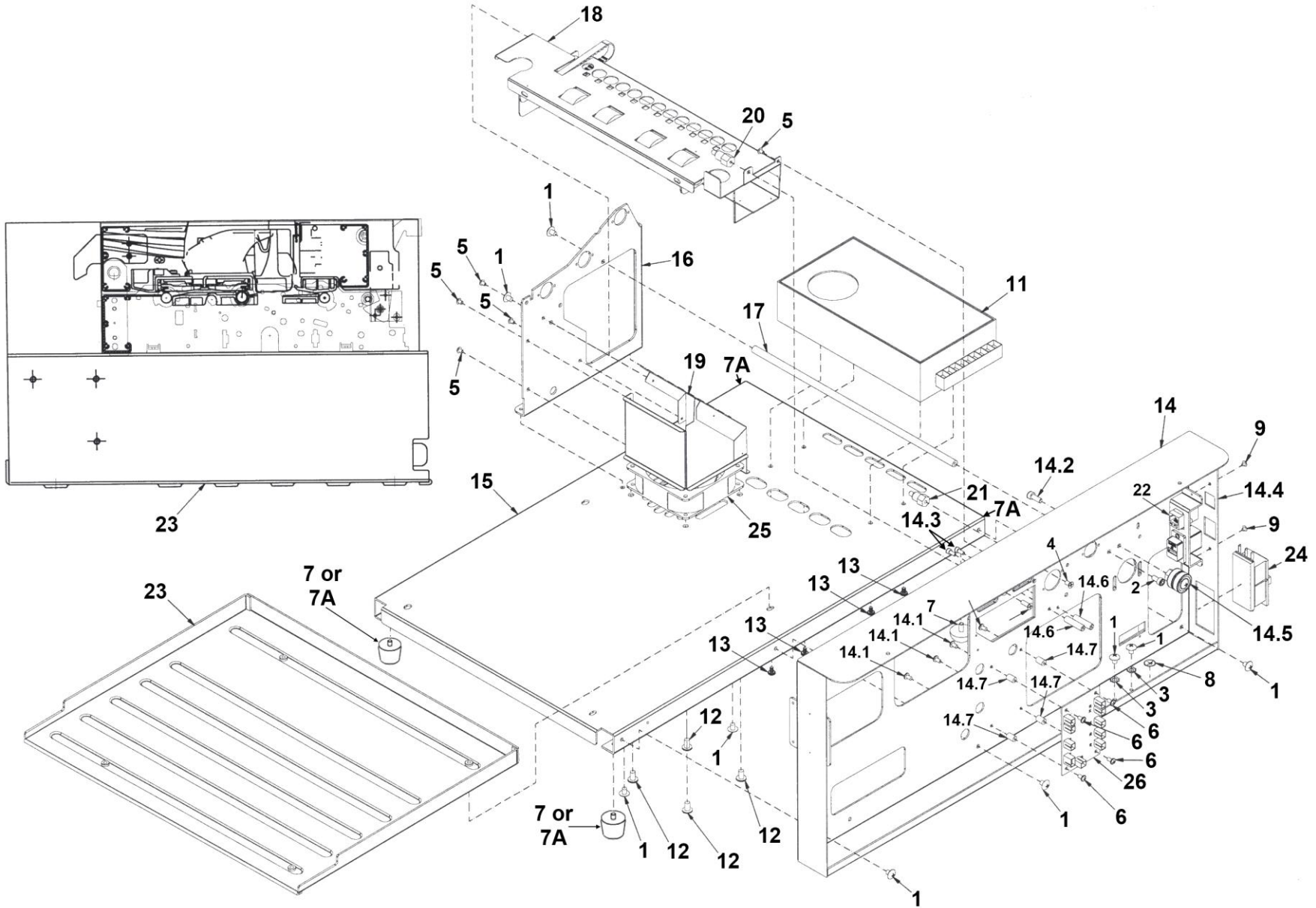


## GROUP 1 – MECHANICAL ASSEMBLY

KEY	PART NO.	DESCRIPTION	QTY
1	123-0017	SCREW, 10-32 x 1/4 PH TRUSS HEAD	3
2	123-0148	WASHER, 7/16 OD x 0.200 ID x 1/32	1
3	123-0252	LOCK WASHER, #6 EXTERNAL TOOTH	1
4	123-0461	SCREW, 6-32 x 3/16 RD HD PH SS	3
5	123-0701	SCREW, 10-32 x 3/16 TRUSS HD PH SS	4
6	123-1112	DECAL, CAUTION EXPOSED ROLLER	2
7	123-1131	DECAL, CAUTION ELECTRIC SHOCK	1
8	123-1135	SCREW, 60-32 x 1/4 TRUSS HD PH SS	17
9	123-1178	SCREW, 6-32 x 1/4 FL HD PH UNDERCUT	4
10	123-1257	BUMPER, MOLDED URETHANE 2001CL	3
11	123-0975	SCREW, 4-40 x 1/4 FL HD, PH SS UNDERCUT	4
12	123-2007	SCREW, 6-32 x 1/2 PAN HD, PH SS	2
13	123-2347	KNOB, 4-ARM FEM. 10-32 THERMOPLASTIC	1
14	123-2438	HANDLE, SNAP-IN 3-1/2 x 1-1/2	1
15	20-100-227	SPRING, INK TANK DOOR	2
16		<b>PRINTER ASSEMBLY B</b>	1
17	42E-100-09	REAR SIDE FRAME COVER, WELDMENT	1
18	42E-100-48	FRONT SIDE FRAME COVER, RIGHT HAND	1
19	42E-100-55	FRONT SIDE FRAME COVER, LEFT HAND	1
20	42E-100-17	TOP COVER WELDMENT	1
21	42-100-21	PIVOT SCREW	1

KEY	PART NO.	DESCRIPTION	QTY
22	42E-100-23	FRONT SIDE FRAME ASSEMBLY	1
23	42E-100-27	REAR CLOSURE (COVER)	1
24	42E-100-30N*	EXIT CLOSURE WELDMENT (replaces 42E-100-30) *(5/12 -- Design changed to work with redesigned 42E-100-31N below. To fit earlier units, must order with 42E-100-31N Bottom Closure Weldment)	1
25	42E-100-31N*	BOTTOM CLOSURE WELDMENT (replaces 42E-100-31) *(5/12 -- Design changed so door provides access to Service Station. To fit earlier units, must order with 42E-100-30N Exit Closure Weldment)	1
26	42-101-13	STUD, 6-32	1
27	42-103-20	HOLD DOWN MEDIA BRACKET ASSY (GROUP 11)	1
28	42E-106-03	METERING BRACKET ASSEMBLY (GROUP 9)	1
29	42E-107-07	ENVELOPE/PAPER MEDIA GUIDE, REAR	1
30	42E-107-09	ADJUSTABLE MEDIA GUIDE, FRONT	1
31	42-107-20	REAR MEDIA SUPPORT PLATE ASSEMBLY	1
31.1	42-107-21	REAR MEDIA SUPPORT PLATE WELDMENT	1
31.2	42-107-16	REAR MEDIA SUPPORT WIDE	1
31.3	42-107-17	REAR MEDIA SUPPORT NARROW	1
31.4	94-104-06	KNOB, METERING BRACKET	1
31.5	123-0148	WASHER, 7/16 OD x 0.200 ID x 1/32	1
31.6	35-211-19	REAR MEDIA SUPPORT NUT (replaces 35-311-19)	1
32	42-500-09	COUNTER ASSEMBLY	1
33	42-500-19	POWER SWITCH ASSEMBLY (GROUP 12, 12A)	1
34	42-500-21	CANCEL SWITCH ASSEMBLY (GROUP 12 12A)	1
35	42-500-22	PAPER SWITCH ASSEMBLY (GROUP 12, 12A)	1
36	123-0683	SCREW, 6-32 x 5/16 FL HD PH UNDERCUT	2
37	42-55-15	DECAL, "POWERED BY MEMJET®"	

# GROUP 2 – MECHANICAL ASSEMBLY



## GROUP 2 – MECHANICAL ASSEMBLY

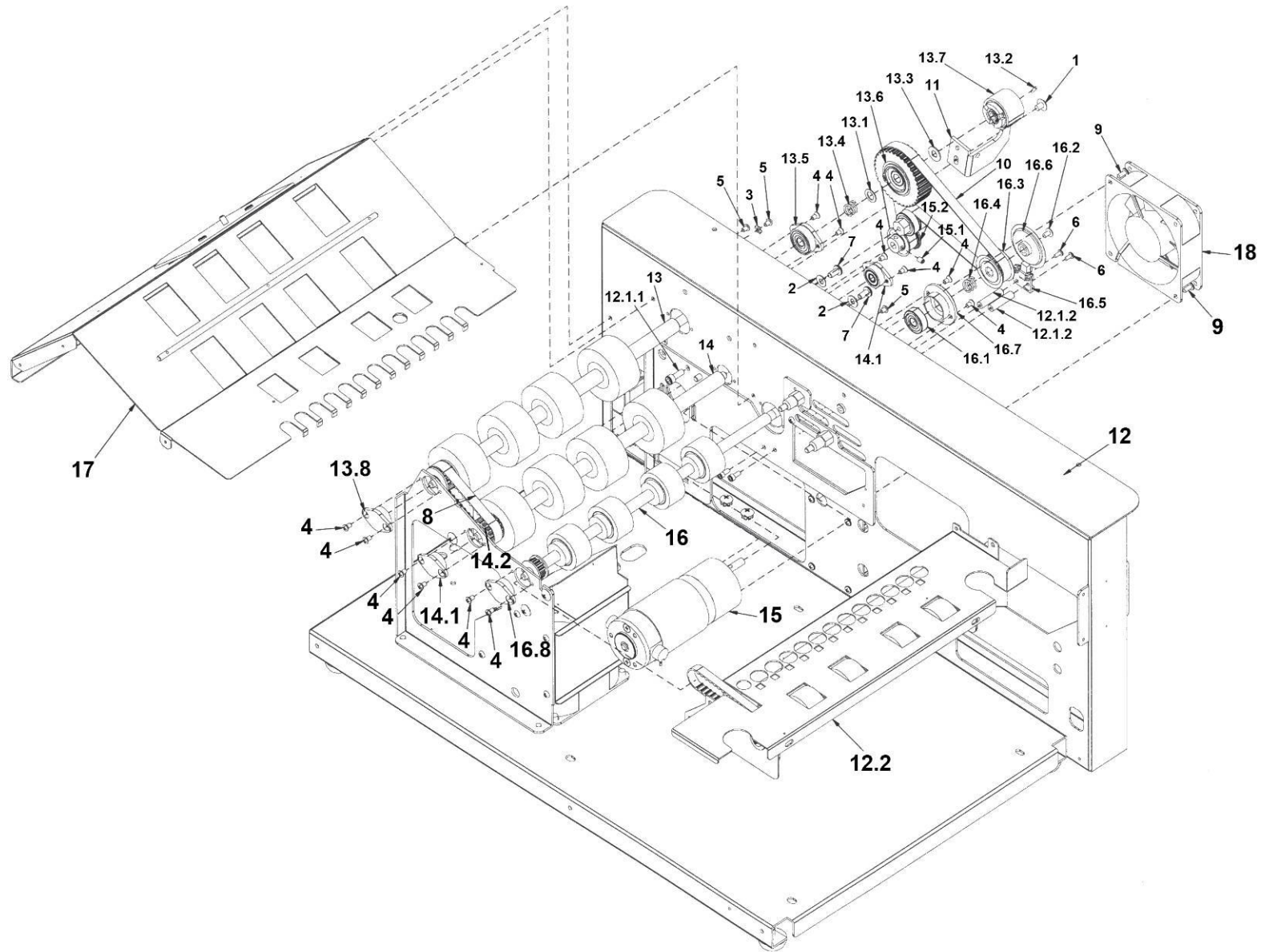
KEY	PART NO.	DESCRIPTION	QTY
1	123-0017	SCREW, 10-32 x 1/4 PH TRUSS HEAD	10
2	123-0185	SCREW, 10-32 x 3/8 SOC. HD CAP, BLACK	1
3	123-0237	LOCK WASHER, #10 EXTERNAL TOOTH	2
4	123-0446	SCREW, 8-32 x 5/16 FL HD PH UNDERCUT	1
5	123-0461	SCREW, 6-32 x 3/16 RD HD PH SS	5
6	123-0612	SCREW, 6-32 x 1/4 PAN HD PH SS	4
7	123-0620	ROUNDED RUBBER FOOT (Short) (2 needed at exit end of Printers with Z2i engine)	2
7A	35-117-04	FOOT ASSEMBLY, TALL (foot 123-2122 & screw 123-0004) (2 needed at entrance end of Printers with Z2i engine) (4 needed for Printers with Z3, Z4 or MR engine. Replaces four short feet; making it easier to move printer without pinching fingers. This is now "standard" starting with printer S/N 100033974.	2 or 4
8	123-1132	DECAL, GROUND MACHINE	1
9	123-1323	SCREW, 4-40 x 1/8 TRUSS HD, PH SS	2
10	123-1684	SCREW, 8-32 x 1/2 FL HD PH UNDERCUT	1
11	123-2395	POWER SUPPLY, SINGLE OUTPUT SWITCHING 320W	1
12	123-2452	SCREW, 12-24 x 3/8 PAN HD SS	4
13	123-2455	SCREW, METRIC M4, PAN HD, PH	4
14		<b>REAR SIDE FRAME ASSEMBLY</b>	1
14.1	123-0612	SCREW, 6-32 x 1/4 PAN HD SS	4
14.2	123-1680	SCREW, 10-32 x 1/2 SOC. HD CAP	1
14.3	123-2067	SCREW, 6-32 x 5/16 SOC. HD CAP	2
14.4	42E-100-04	REAR SIDE FRAME WELDMENT	1
14.5	42-101-23	TENSIONER STUD ASSEMBLY	1
14.6	42-102-17	ENCODER SENSOR STANDOFF	2
14.7	95-100-32	SUPPORT, PC BOARD	4

KEY	PART NO.	DESCRIPTION	QTY
15	42E-100-14	MOTOR BASE	1
16	42-100-36	INTERMEDIATE SIDE FRAME	1
17	42-102-14	CROSS BAR 1	1
18	42-103-03	FRONT CENTER PLATE ASSEMBLY (GROUP 8)	1
19	42-103-30	BOTTOM FAN CHAMBER WELDMENT	1
20	42-103-36	MEDIA BRACKET STUD #1	1
21	42-103-37	MEDIA BRACKET STUD #2	1
22	42-104-07	COUPLER HOLDER ASSEMBLY	1
23	Not Available <sup>1</sup> Use 42-900-100	PRINT ENGINE-NORTHSTAR Z2i (GROUP 3) (S/N100027598 or lower)	1
	42-900-100	PRINT ENGINE-NORTHSTAR (GROUP 3) (S/N100027599 or higher) <b>(42-900-100 Replaces 42-110-02)</b>	1
24	42-500-01	POWER INLET GROUND	1
24.1	123-1398	2.5 AMP SLO-BLO FUSE (POWER INLET ASSY.) <b>(NOTE: SPARE FUSE SUPPLIED IN FUSE HOLDER)</b>	2
25	42-500-08	FAN ASSEMBLY 1 WIRE HARNESS (GROUP 12, 12A)	1
26	42-500-30	INTERFACE PC BOARD	1

<sup>1</sup> To install the replacement Print Engine into Printer S/N 100027598 or lower; the Front Side-Frame (operator side) must be modified. Please contact Tech Support for details.



# GROUP 2.1 – MECHANICAL ASSEMBLY



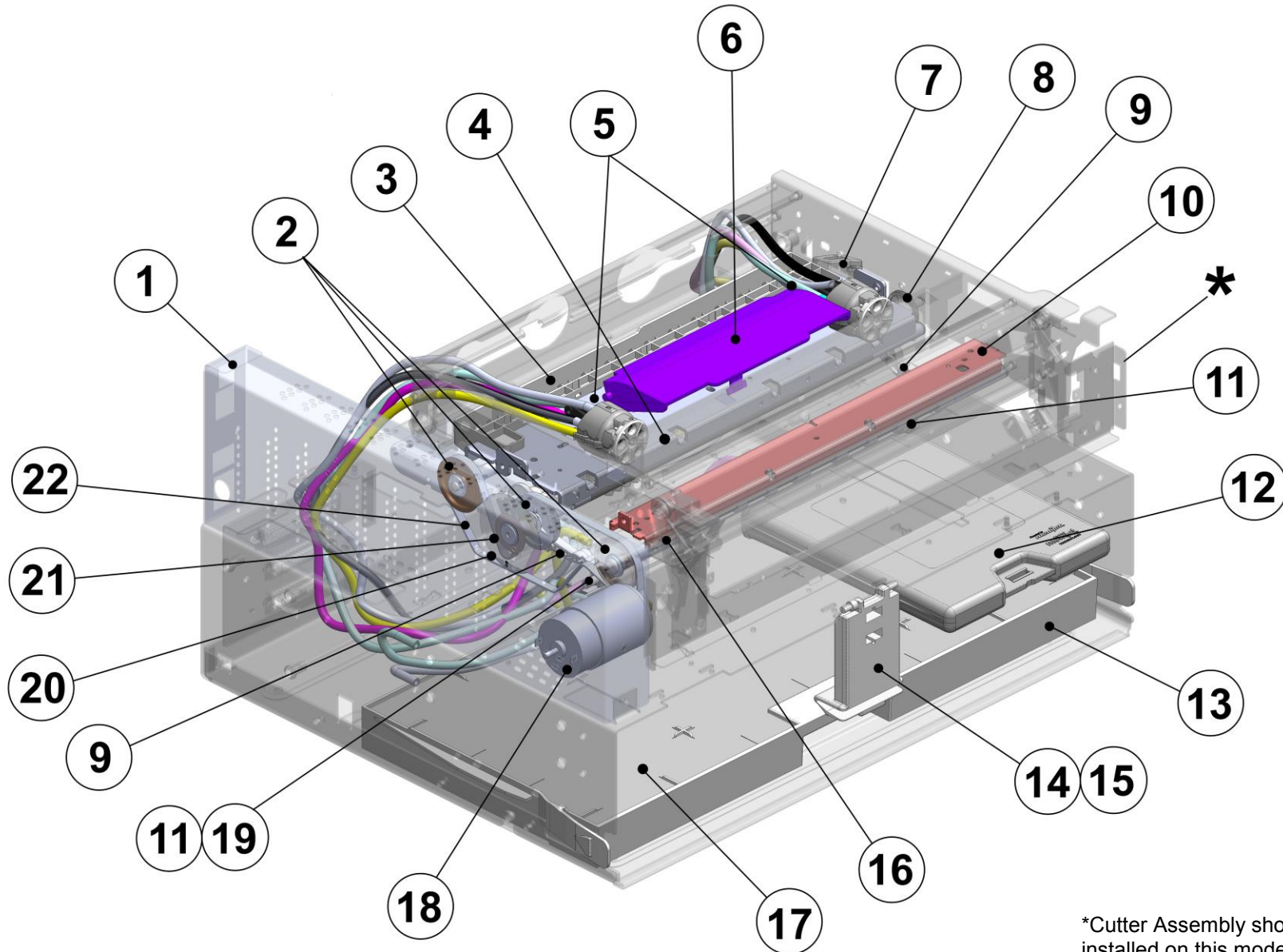


## GROUP 2.1 – MECHANICAL ASSEMBLY

KEY	PART NO.	DESCRIPTION	QTY
1	123-0017	SCREW, 10-32 x 1/4 PH TRUSS HEAD	1
2	123-0148	WASHER, 7/16 OD x 0.200 ID x 1/32	2
3	123-0252	LOCK WASHER, #6 EXTERNAL TOOTH	1
4	123-0275	SCREW, 6-32 x 1/4 OVAL CSK HD PH SS	12
5	123-0461	SCREW, 6-32 x 3/16 RD HD PH SS	3
6	123-0976	SCREW, 4-40 x 1/4 PAN HD PH SS	2
7	123-1210	SCREW, 10-32 x 3/8 BTN HD, SOC. CAP SS BLK	2
8	123-1708	BELT, TIMING 80XL037	1
9	123-2409	SCREW, 6-32 x 5/16 PAN HD SS	2
10	123-2436	BELT XL037, 96GR x 9.4" LONG	1
11	29-103-12	BRACKET, CLUTCH	1
<b>12</b>		<b>PRINTER ASSEMBLY A</b>	<b>1</b>
12.1	42E-102-03	REAR SIDE FRAME ASSEMBLY	1
12.1.1	123-1680	SCREW, 10-32 x 1/2 SOC. HD CAP	1
12.1.2	42-102-17	ENCODER SENSOR STANDOFF	2
12.2	42-103-03	FRONT CENTER PLATE ASSY. (SEE GROUP 8)	1
13	42-101-02	REAR FEED SHAFT ASSEMBLY (SEE GROUP 5) (NOTE:13.1-13.8 NOT PART OF ASSEMBLY)	1
13.1	123-0312	WASHER, 5/16 x 1/2 x 0.030 PLASTIC	1
13.2	123-1828	PIN, DOWEL 3/32 DIA 3/8 SS 18-8	1
13.3	27-102-10	WASHER, CLUTCH SUPPORT	1
13.4	29-103-08	SPRING	1
13.5	29-103-09	BALL BEARING HOUSING ASSEMBLY	1
	123-0384	BALL BEARING NMB 608ZZ	1
13.6	32-102-22	CLUTCH PULLEY ASSEMBLY	1
13.7	34-500-19	CLUTCH ASSEMBLY	1
13.8	90-103-52	BALL BEARING ASSEMBLY	1
	123-0035	BALL BEARING NMB R-4HH	1

KEY	PART NO.	DESCRIPTION	QTY
14	42-101-06	FRONT FEED SHAFT ASSY. (SEE GROUP 4) ) (NOTE:14.1-14.2 NOT PART OF ASSEMBLY)	1
14.1	90-103-52	BALL BEARING ASSEMBLY	2
	123-0035	BALL BEARING NMB R-4HH	2
14.2	94-105-04	PULLEY 16GR ASSEMBLY	1
15	42-101-16	MOTOR, 30.3 VDC (FEED SECTION) No longer available as assembly 42-101-15 (sold only as parts 42-101-16, 123-0322, 123-2450)	1
15.1	123-0322	SET SCREW, 8-32 x 1/4 HEX SOC. CUP PT	1
15.2	123-2450	PULLEY, 13 GR, 0.250 BORE DF w/HUB for 3/8 BELT WD	1
16	42-102-02	PULL OUT SHAFT ASSEMBLY (SEE GROUP 7) (NOTE: 16.1-16.8 NOT PART OF ASSEMBLY)	1
16.1	123-0384	BALL BEARING NMB 608ZZ	1
16.2	123-1135	SCREW, 6-32 x 1/4 TRUSS HD PH SS	1
16.3	123-2461	PULLEY 16XL037-5A x 5/16	1
16.4	29-103-08	SPRING	1
16.5	42-102-15*	ENCODER SENSOR PC BOARD, FEED SEC. (FOR Z3, Z4, MR PRINT ENGINE UNITS) (*NOT COMPATIBLE WITH Z2i PRINT ENGINES)	1
16.6	123-2431	ENCODER WHEEL, FEEDER & PRINT ENGINE	1
16.6	42-102-18	ENCODER ASSEMBLY, FEEDER (INCL. 123-2431 AND BLACK BACKING PLATE)	1
16.7	42-102-25	BEARING HOUSING	1
16.8	90-103-52	BALL BEARING ASSEMBLY	1
	123-0035	BALL BEARING NMB R-4HH	1
17	42-104-02	CENTER PLATE ASSEMBLY	1
18	42-500-14	FAN ASSEMBLY 2 WIRE HARNESS (GROUP 12, 12A)	1

# GROUP 3 – PRINT ENGINE - FRONT



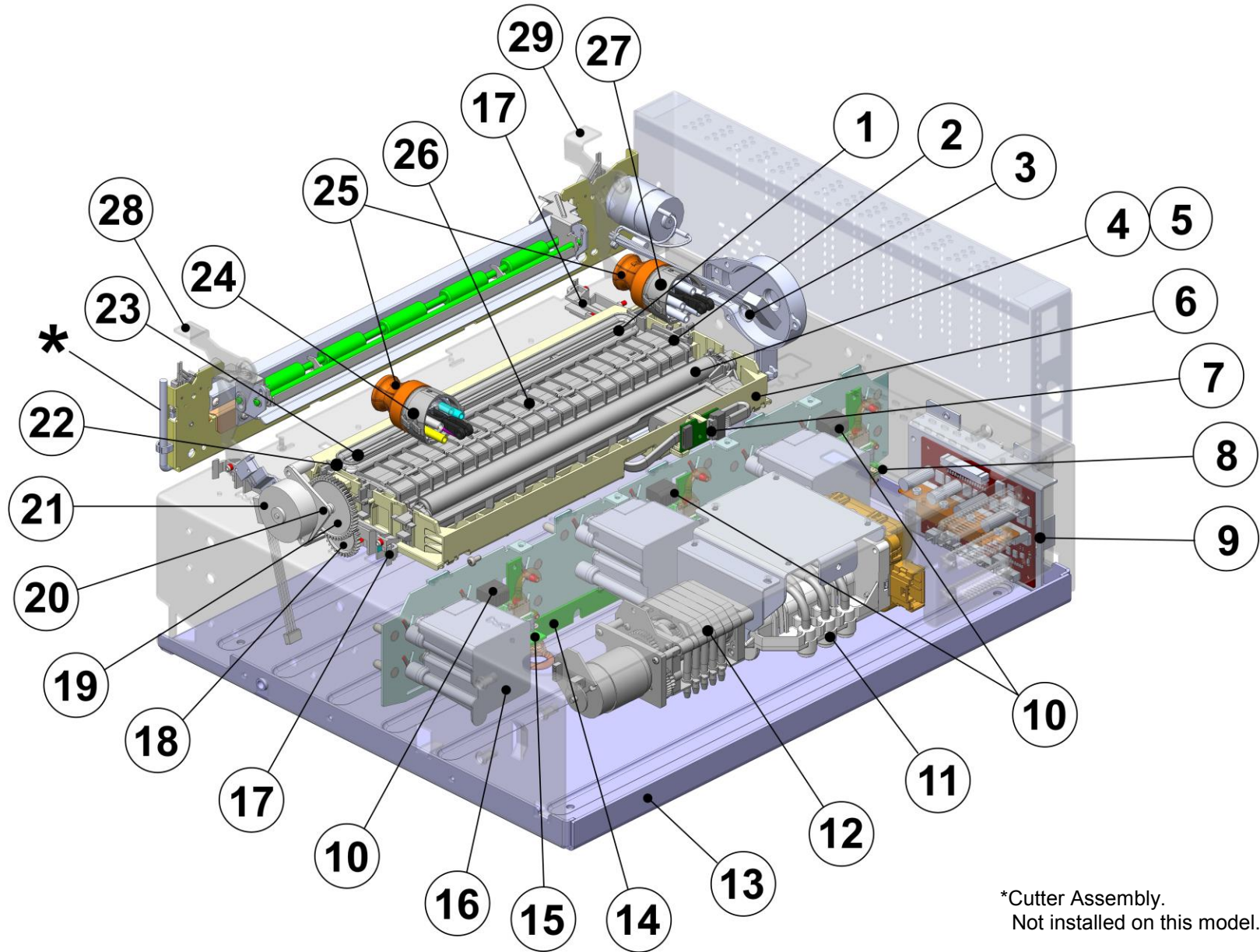
## GROUP 3 – PRINT ENGINE – FRONT

KEY	PART NO.	DESCRIPTION	QTY
1	42-900-100 <sup>1</sup>	PRINT ENGINE (42-900-100 Replaces 42-110-02) <b>IMPORTANT:</b> When installing a new print engine, please verify that all four rubber feet, on bottom of printer body, are same size (suggest all tall feet, part # 35-117-04).	1
2	123-2710	MAIN DRIVE SHAFT PULLEY	3
3	123-2594	UPPER MAIN PLATEN ASSY. <b>SEE GROUP 3.5.</b>	1
4	123-2686	PRIMARY GRIT SHAFT ASSEMBLY	1
5	123-2504	PRINthead LATCH SPRING	2
6	42-900-45	PRINthead LATCH ASSY. (COVER & WARNING LABEL – US, REPLACES 123-2494, 42-110-70)	1
	42-900-50	PRINthead LATCH ASSY. (COVER & WARNING LABEL – EUR, REPLACES 123-2494, 42-110-70)	1
7	123-2521	LIFTER MOTOR	1
8	42-900-40	LIFT ARM GEAR KIT (INCL. GEAR & C-CLIP)	1
9	42-900-05	SERVICE STATION LIFTING ARMS KIT (INCL. RIGHT & LEFT ROCKER ARMS, 2 SPRINGS, & 2 E-CLIPS)	1
10	123-2429	UPPER PLATEN WHEELS ASSEMBLY ( <i>DOUBLE WHEEL ASSEMBLY REPLACES OBSOLETE SINGLE WHEEL ASSEMBLY</i> )	1
11	123-2586	SMALL GEAR, SERVICE STATION DRIVE SHAFT (	2
12	CJ-24 <sup>1</sup>	INK CARTRIDGE – BLACK	2
	CJ-21	INK CARTRIDGE – CYAN	1
	CJ-23	INK CARTRIDGE – MAGENTA	1
	CJ-22	INK CARTRIDGE – YELLOW	1
13	123-2487	WASTE INK TRAY ASSEMBLY	1

KEY	PART NO.	DESCRIPTION	QTY
14	123-2474	INK TANK LATCH (YELLOW)	1
15	123-2475	INK TANK LATCH (CYAN, MAGENTA, BLACK)	2
16	123-2687	SEGMENTED GRIT SHAFT	1
17	22936	WASTE INK TRAY PAD	1
18	123-2522	PAPER PATH MOTOR	1
19	123-2646	SERVICE STATION DRIVE SHAFT	1
20	123-2708	IDLER PULLEY	2
21	123-2739	ENCODER COVER.	1
	123-2740	ENCODER COVER MOUNTING SCREWS	3
	123-2741	ENCODER BEARING PLATE ASSEMBLY. ( <i>INCLUDES BEARING PLATE, BEARING, MOUNTING SCREWS &amp; WASHERS</i> )	1
	123-2431	ENCODER WHEEL, FEEDER AND PRINT ENGINE  On Z3, Z4, MR engines the encoder wheel is enclosed, but it is the same wheel.	1
	123-2432	ENCODER SENSOR PCA (PRINT ENGINE)	1
	123-2613	ENCODER MODULE SPRING	1
	42-900-20*	ENCODER SHIELD KIT (FOR Z2i PRINT ENGINE ONLY)	1
	22	123-2446	DRIVE BELT
	<b>*NOT SHOWN</b>		

<sup>1</sup> To install the replacement Print Engine into Printer S/N 100027598 or lower, the Front Side-Frame (operator side) must be modified. Please contact Tech Support for details.

# GROUP 3.1 – PRINT ENGINE - REAR



\*Cutter Assembly.  
Not installed on this model.

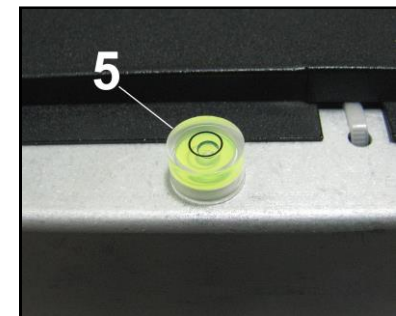
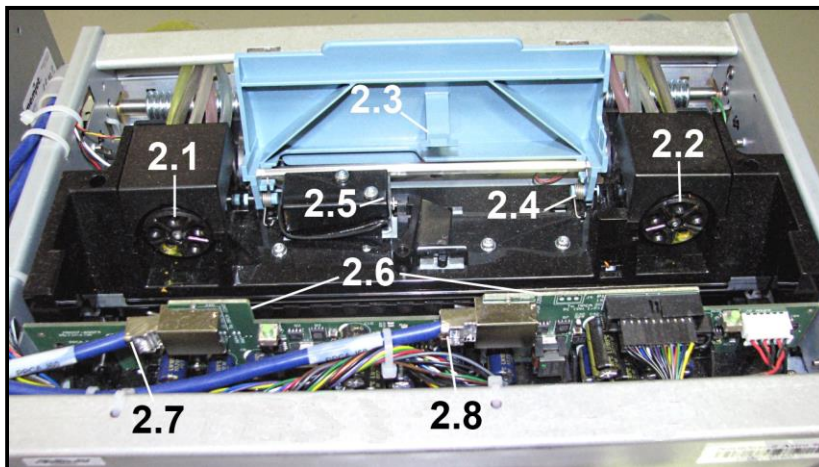
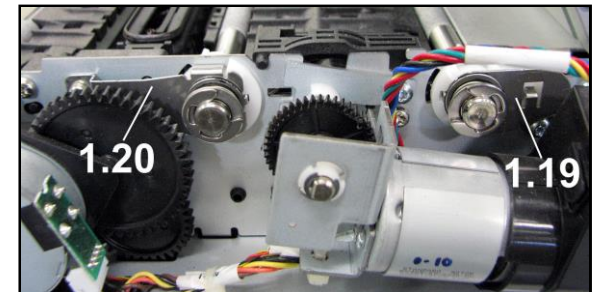
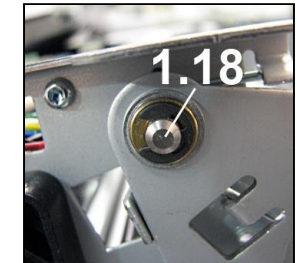
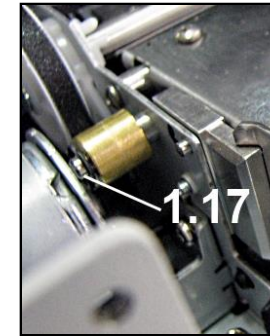
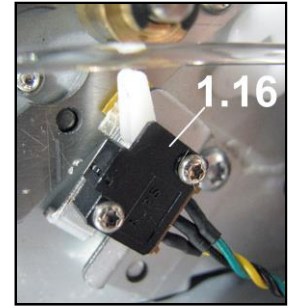
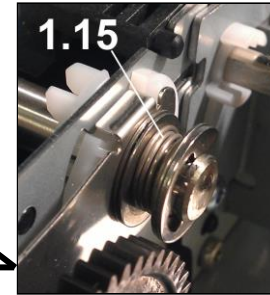
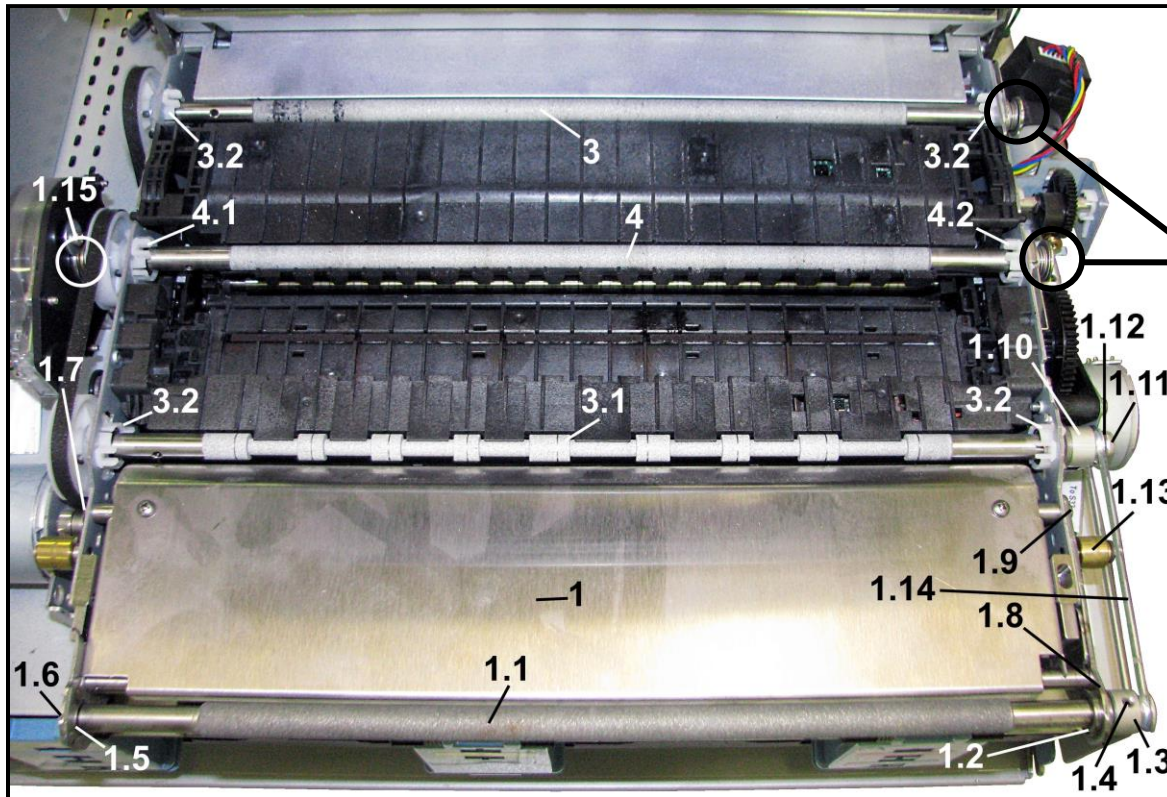


## GROUP 3.1 – PRINT ENGINE - REAR

KEY	PART NO.	DESCRIPTION	QTY
1	123-2481	SERVICE STATION CAP MODULE	1
2	123-2482	SERVICE STATION PLATEN MODULE ASSY.	1
3	42-900-130	<b>INCLUDES:</b> THRUST SPRING, SHIM & RETAINING RING (REPLACES 123-2607)	1
4	123-2480	WIPER ROLLER	1
5	123-2478	WIPER MODULE W/MOTOR (INC. WIPER ROLLER)	1
6	123-2483	SERVICE STATION (REV C – WORKS WITH EITHER STYLE SERVICE STATION GUIDE)	1
6A	123-2636	SERVICE STATION TRAY AND WICK (REV C -- WORKS WITH EITHER STYLE SERVICE STATION GUIDE)	1
7	123-2479	SERVICE STATION WIPER MOTOR PCA	1
8	123-2615	INK TANK INTERFACE TEMP. SENSOR (K2) PCA	1
9	CALL	DPCA BOARD (Z2i)	1
	123-2473	DPCA BOARD (Z3/Z4/MR)	1
10	123-2616	INK TANK INTRFC (CMY) PCA	3
11	123-2477	DUAL PINCH VALVE (W/HOSE CONNECTORS)	1
	42-900-85	DUAL PINCH VALVE SENSOR PC BOARD KIT (INCL. PC BOARD, 3 INSERTS AND PINCH VALVE WRENCH)	1
12	123-2515	PERISTALTIC PUMP (W/HOSE CONNECTORS)	1
	123-2495	HOSE CONNECTOR BARB (HOSE SPLICE BARB)	5
13	42-110-92	PRINT ENGINE BASE ASSEMBLY	1

KEY	PART NO.	DESCRIPTION	QTY
14	123-2617	INK TANK LEVEL PCA	1
15	123-2614	K1 INK TANK INTERFACE PCA	1
16	123-2484	BUFFER BOX	3
17	123-2546	SERVICE STATION TRACK	2
18	123-2585	MEDIUM GEAR, MOTOR SLED DRIVE (STEPPER MOTOR)	1
19	123-2576	LARGE GEAR, MOTOR SLED DRIVE (STEPPER MOTOR)	1
20	123-2528	BRACKET, MOTOR SLED DRIVE (STEPPER MOTOR)	1
21	123-2476	STEPPER MOTOR	1
22	123-2709	SERVICE STATION GEAR MUDFLAP	1
23	123-2711	SERVICE STATION WIPER ROLLER SQUEEGEE	1
24	42-900-10	INK REVOLVER, PUMP SIDE (INCLUDES HOSES AND COUPLINGS)	1
25	123-2564	CAP PROTECTOR (PLASTIC SHIPPING CAPS)	2
26	123-2565	CAP RESTRAINER (CARDBOARD SHIPPING INSERT)	1
27	42-900-15	INK REVOLVER, VALVE SIDE (INCLUDES HOSES AND COUPLINGS)	1
28	123-2611	CLAMSHELL LATCH (RH)	1
29	123-2610	CLAMSHELL LATCH (LH)	1

## GROUP 3.2 – PRINT ENGINE – COMPONENTS



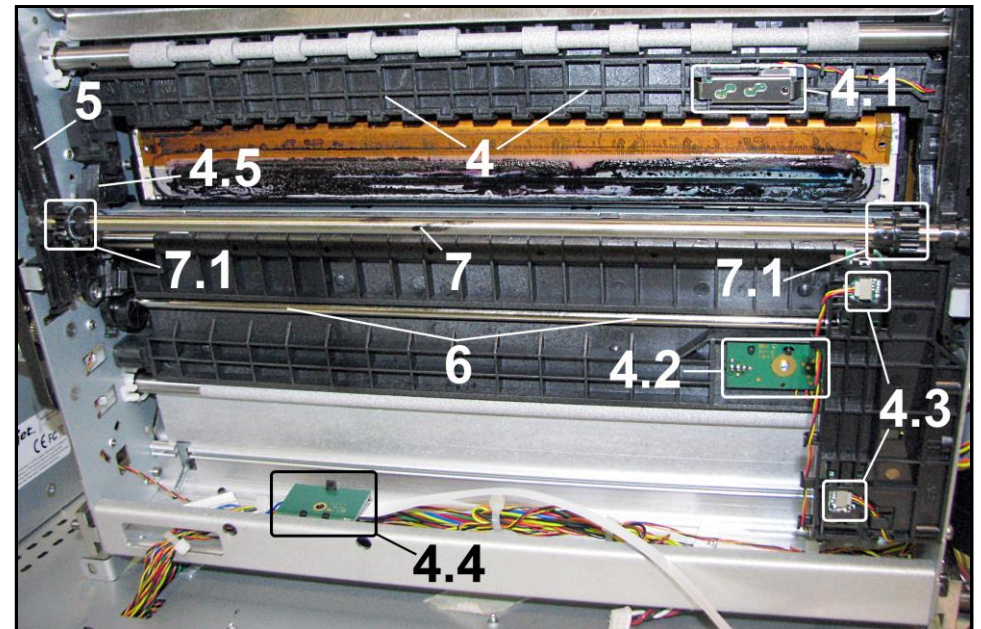
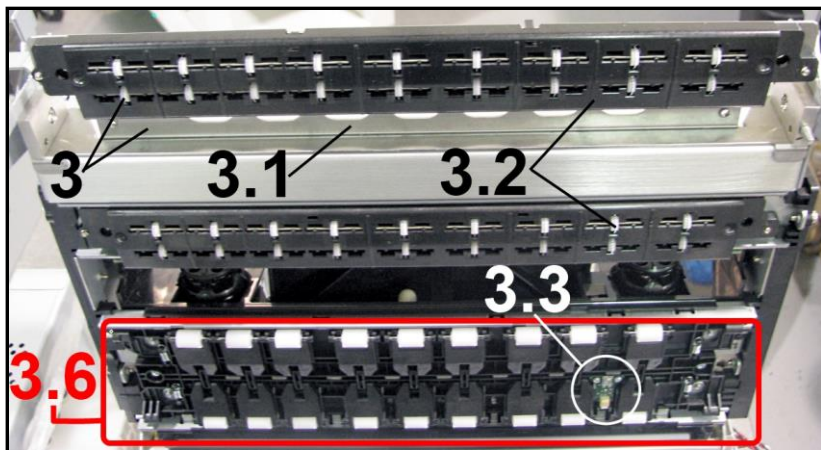
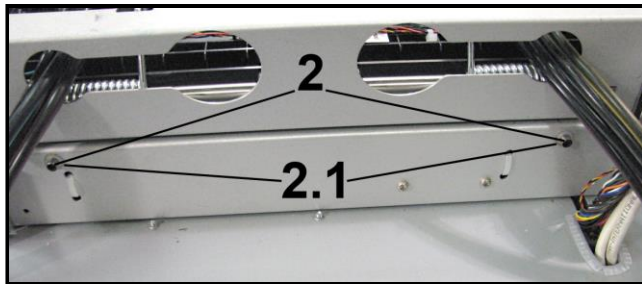
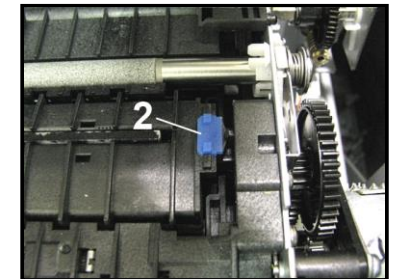
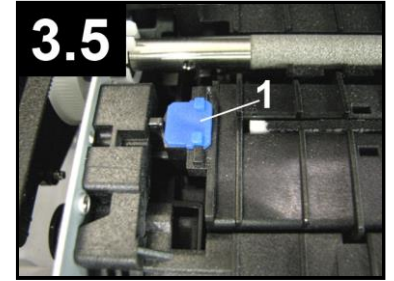
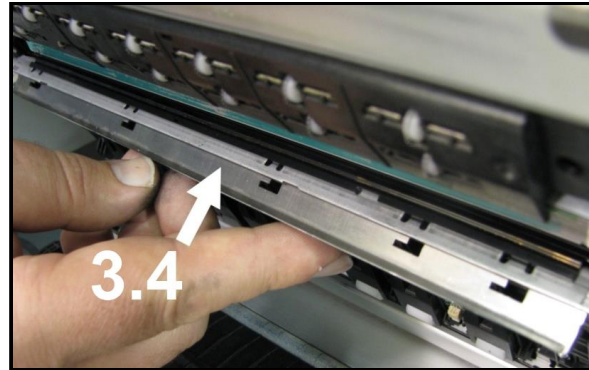
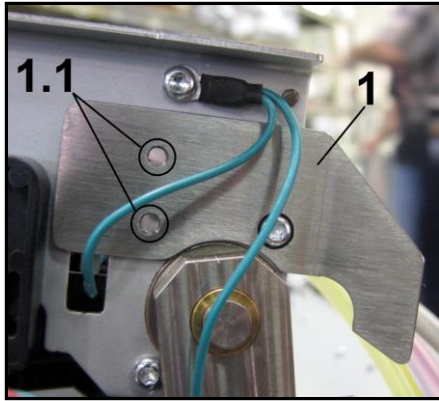


## GROUP 3.2 – PRINT ENGINE – COMPONENTS

KEY		PART NO.	DESCRIPTION	QTY
<b>EXTERNAL – EXIT END</b>				
1		42-110-25	EXIT CENTER PLATE ASSY.	1
1.1		42-110-06	EXIT ROLLER	1
1.2		123-2254	BEARING (EXIT ROLLER)	1
1.3		42-110-09	DRIVEN PULLEY, (EXIT ROLLER)	1
1.4		123-0880	ALLEN HEAD SCREW	1
1.5		123-2441	BEARING (EXIT ROLLER)	1
1.6		123-1323	SCREW, 4-40 x 3/16 TRUSS HD PH SS	1
1.7		123-0976	SCREW, 4-40 x 1/4 PAN HD PH	1
1.8		42-110-10	EXIT ROLLER SIDE PLATE	1
1.9		123-1023	SCREW, 4-40 x 5/16 PAN HD, PH SS	1
1.10		42-110-08	DRIVE PULLEY	1
1.11		123-2453	SCREW, PHILLIPS HEAD	1
1.12		123-2396	STAR WASHER	1
1.13		42-110-15	LATCH WHEEL	1
1.14		123-2442	EXIT ROLLER DRIVE BELT (O-RING 3/32 x 6.50 90A SD)	1
1.15		42-900-130	<b>INCLUDES:</b> THRUST SPRING, SHIM & RETAINING RING (REPLACES 123-2607)	1
1.16		123-2557	CLAMSHELL SWITCH ASSY.	1
1.17		42-900-30	LOWER CLAMSHELL LATCH PIN KIT (1 PIN/SCREW PER KIT)	2
1.18		42-900-35	UPPER CLAMSHELL LATCH PIN KIT (1 PIN/SCREW PER KIT)	2
1.19		123-2763	GROUNDING STRAP (FOR ENTRY GRIT SHAFT)	1
1.20		123-2764	GROUNDING STRAP (FOR ENCODER GRIT SHAFT)	1


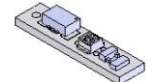
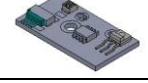
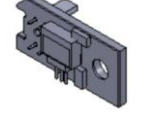







KEY		PART NO.	DESCRIPTION	QTY
<b>PRINTHEAD CARTRIDGE AREA</b>				
2.1		42-900-15	INK REVOLVER, VALVE SIDE (INCLUDES HOSES AND COUPLINGS)	1
2.2		42-900-10	INK REVOLVER, PUMP SIDE (INCLUDES HOSES AND COUPLINGS)	1
2.3		42-900-45	PRINTHEAD LATCH ASSY. (COVER & WARNING LABEL – US, REPLACES 123-2494)	1
		42-900-50	PRINTHEAD LATCH ASSY. (COVER & WARNING LABEL – EUR, REPLACES 123-2494)	1
2.4		123-2504	PRINTHEAD LATCH SPRING	2
2.5		123-2601	PRINTHEAD LATCH SOLENOID	1
2.6		123-2516	PEN DRIVER PCA (SEE GROUP 3.4)	1
2.7		123-2563	DATA CABLE, MPCA-PPCA 2	1
2.8		123-2562	DATA CABLE, MPCA-PPCA 1	1
3		123-2692	ENTRY GRIT SHAFT ASSY.	1
3.1		123-2687	SEGMENTED GRIT SHAFT	1
3.2		*SEE BELOW (42-900-90)	ENTRY-OUTPUT BEARING ASSY. (FOR ENTRY & SEGMENTED GRIT SHAFTS)	4
4		123-2686	PRIMARY (ENCODER) GRIT SHAFT ASSEMBLY	1
4.1		*SEE BELOW (42-900-90)	ENCODER SHAFT BALL BEARING HOUSING ASSY. (ENCODER/LEFT-SIDE)	1
4.2		*SEE BELOW (42-900-90)	ENCODER SHAFT BALL BEARING HOUSING ASSY. (RIGHT SIDE)	1
5		123-2725	BUBBLE GAUGE	1
*		42-900-90	GRIT SHAFT BEARINGS KIT FIT GRIT SHAFTS ABOVE (3, 3.1, 4): FOR ENTRY & SEGMENTED (x 4) FOR PRIMARY (ENCODER) (L & R)	

## GROUP 3.3 – PRINT ENGINE – COMPONENTS



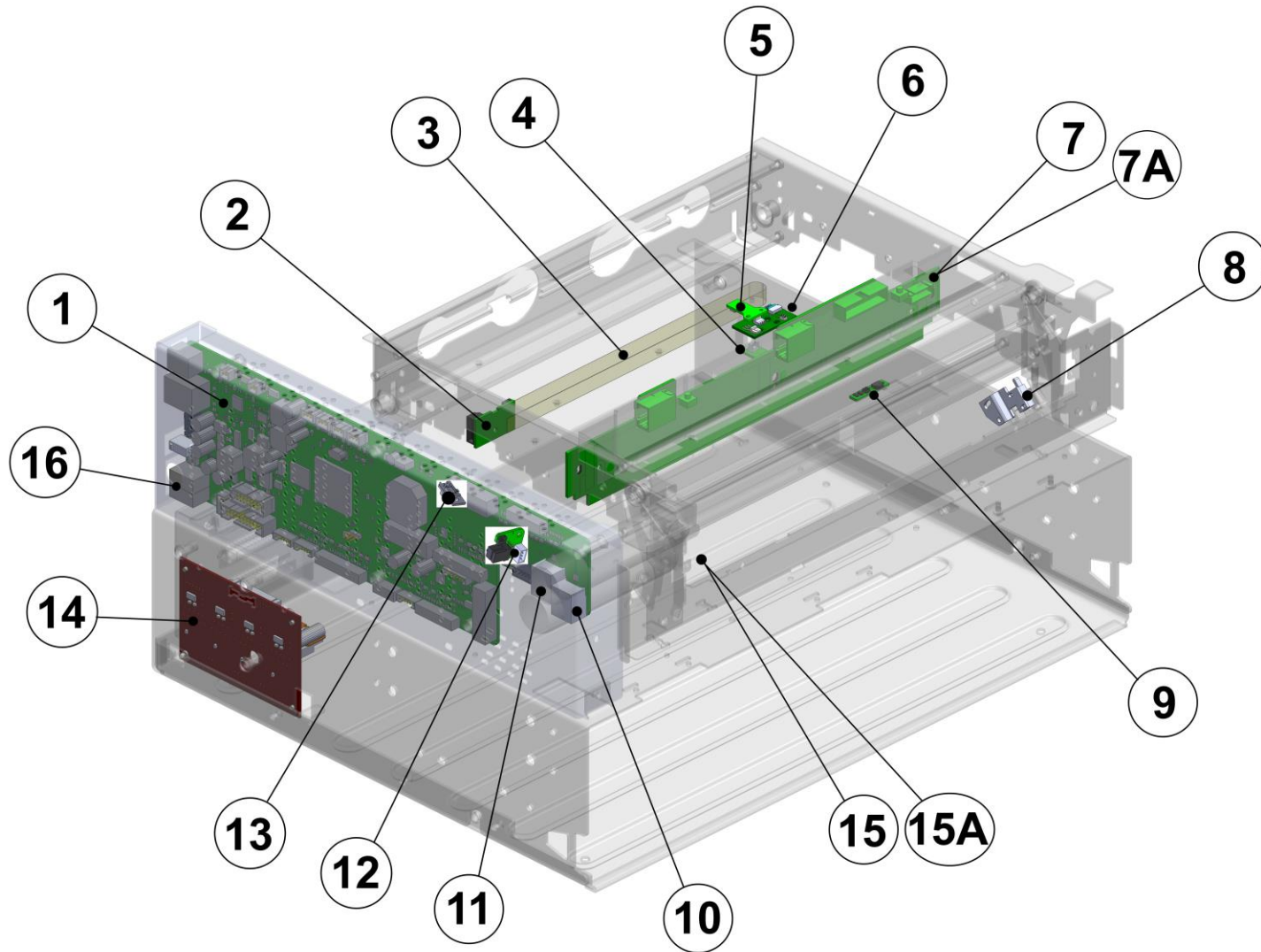
## GROUP 3.3 – PRINT ENGINE – COMPONENTS

KEY		PART NO.	DESCRIPTION	QTY
1		42-110-35	<b>ANGLE STOP BRACKET</b> (60 degree stop) Order this item and item #1.1 to add to Z2i engine.	1
1.1		123-2468	ALLEN HEAD SCREWS	2
		42-900-20*	ENCODER SHIELD KIT (For Z2i Engine Only)	1
			<b>*NOT SHOWN</b>	
<b>EXTERNAL – FEED END</b>				
2		42-101-13	STUD, 6-32	2
2.1		123-2270	FLAT NYLON WASHER	2
<b>UNDER UPPER CLAMSHELL</b>				
3		42-110-30	<b>EXIT WHEELS BRACKET HOLDER ASSEMBLY</b>	1
3.1		42-110-31	EXIT WHEELS BRACKET HOLDER	1
3.2		123-2429	UPPER PLATEN WHEELS ASSY . <i>(DOUBLE WHEEL ASSEMBLY REPLACES OBSOLETE SINGLE WHEEL ASSEMBLY)</i>	2
3.3		123-2517	SENSOR, TOP ENTRY (Paper Path Entry)	1
3.4		42-900-55	HEAD MEDIA GUIDE KIT ( <i>Envelope Printing Attachment Kit</i> ) - <i>preinstalled on new machines</i> – Includes Right and Left-hand Spacers below.	1
3.4		42-110-52J	( <i>OPTIONAL</i> ) THICKER HEAD MEDIA GUIDE For Thicker Envelopes ( <b>NOT PART OF KIT</b> )	
3.5		42-900-60	PPS SPACERS, [1] LEFT AND [2] RIGHT-HAND <b>NOTE:</b> Spacers should not be used with earlier Head Media Guides (Envelope Printing Attachments) which did not include Spacers.	1
3.6		123-2594	UPPER MAIN PLATEN ASSEMBLY (for Z3 or higher) (123-2571 for Z2i not available) <b>SEE GROUP 3.5</b>	1

KEY		PART NO.	DESCRIPTION	QTY
<b>UNDER LOWER CLAMSHELL</b>				
4		123-2602	LOWER INTERMEDIATE PLATEN	1
4.1		123-2519	SENSOR, EXIT (Paper Path Exit)	1
4.2		123-2518	SENSOR, BOTTOM ENTRY (Paper Path Entry)	1
4.3		123-2520	SERVICE STATION PCA (Sensor) (2 for Service Station position sensors (index & home), 1 for Service Station lift sensor, see GROUP 3.4). Not compatible with Z2i engine.	3
4.4		123-2479	SERVICE STATION CONNECTOR PCA	1
4.4		123-2492	FLEX CABLE (CONNECTS TO 123-2479 MOUNTED ON PRINT ENGINE FRAME)	1
4.5		42-900-05	SERVICE STATION LIFTING ARMS KIT (INCLUDES RIGHT & LEFT ROCKER ARMS, 2 SPRINGS, AND 2 E-CLIPS)	1
5		123-2546	SERVICE STATION TRACK	2
6		123-2577	CAM SHAFT ASSEMBLY <b>(REPLACES 123-2712)</b>	1
7		123-2646	SERVICE STATION DRIVE SHAFT	1
7.1		123-2586	SMALL GEAR, SERVICE STATION DRIVE SHAFT	3



## GROUP 3.4 – PRINT ENGINE – COMPONENTS



\*Cutter Assembly shown not installed on this model.

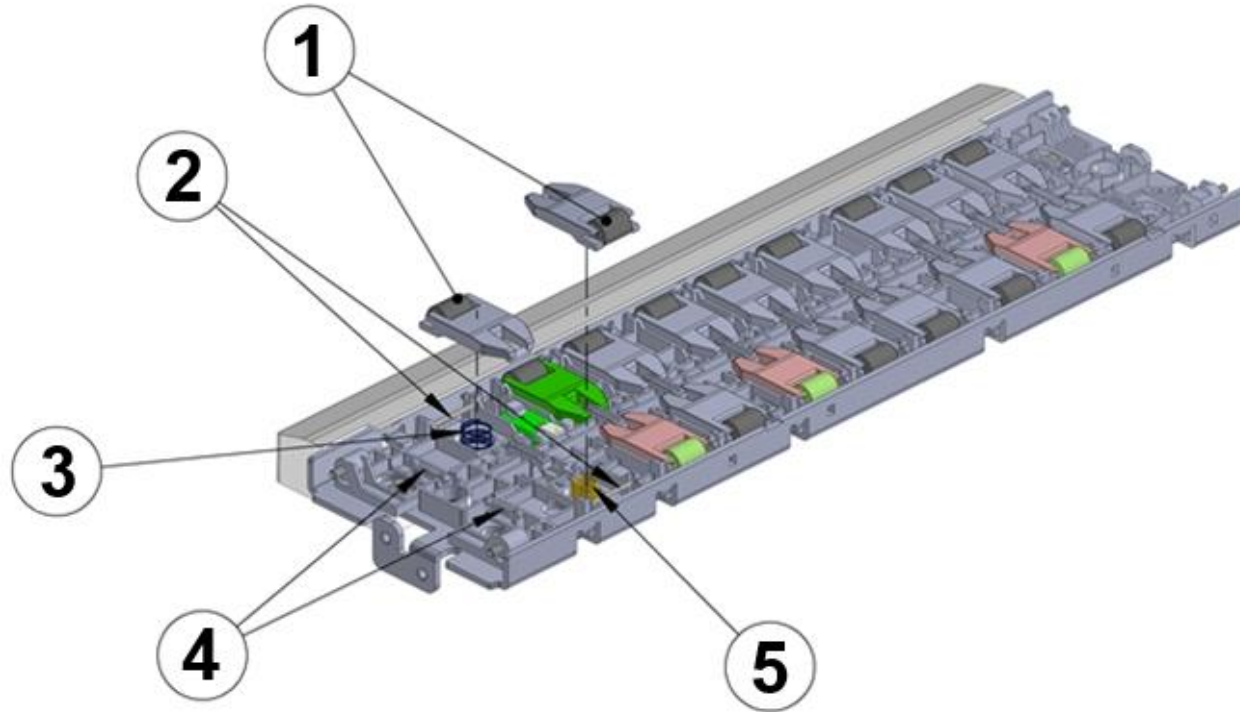
## GROUP 3.4 – PRINT ENGINE – COMPONENTS







KEY		PART NO.	DESCRIPTION	QTY
1		N/A	MAIN PRINTED CIRCUIT BOARD (Z2i) (for Print Engine S/N SG09CZ1##### or lower.) Not Available. Replace Print Engine.	1
		42-500-200 <sup>1</sup>	MAIN PRINTED CIRCUIT BOARD (Z3, Z4, MR) (for Print Engine S/N SG10KZ1##### or higher)	1
2		123-2479	SERVICE STATION CONNECTOR PCA	1
3		123-2492	FLEX CABLE (CONNECTS TO 123-2479 MOUNTED ON PRINT ENGINE FRAME) (SEE #2 ABOVE OR <b>GROUP 3.3</b> )	1
4		123-2614	K1 INK TANK INTERFACE PCA	1
5		123-2517	SENSOR, TOP ENTRY (Paper Path Entry)	1
6		123-2518	SENSOR, BOTTOM ENTRY (Paper Path Entry)	1
7		123-2516	PEN DRIVER PCA	1
7A		123-2732	PPCA COVER	1
8		123-2557	CLAMSHELL SWITCH ASSEMBLY	1
9		123-2519	SENSOR, EXIT (Paper Path Exit)	1

KEY		PART NO.	DESCRIPTION	QTY
10		123-2563	DATA CABLE, MPCA-PPCA 2	1
11		123-2562	DATA CABLE, MPCA-PPCA 1	1
12		123-2432	ENCODER SENSOR PCA (PRINT ENGINE)	1
13		123-2520	SERVICE STATION PCA (Sensor) (1 for Service Station lift sensor, 2 for Service Station position sensors (index & home), see GROUP 3.3) Not compatible with Z2i engine	3
14		123-2473	DPCA CIRCUIT BOARD (Z3/Z4/MR) Not compatible with Z2i engine	1
15		42-900-25	SERVICE STATION GUIDE KIT (FOR UNITS WITH SERVICE STATION <b>REV A OR B</b> – OPEN INK TANK DOOR TO CHECK LABEL ON FRONT OF SERVICE STATION)	1
15A		42-900-26	NEW STYLE SERVICE STATION GUIDE KIT (FOR UNITS WITH SERVICE STATION <b>REV C</b> – OPEN INK TANK DOOR TO CHECK LABEL ON FRONT OF SERVICE STATION)	1
16		42-500-05	POWER SUPPLY CABLE (P1000 – MPCA TO POWER SUPPLY)	1

<sup>1</sup> Please provide the serial number of the printer and serial number of the print engine when placing an order for this board. It must be programmed with serial number.

## GROUP 3.5 – PRINT ENGINE – UPPER MAIN PLATEN ASSEMBLY

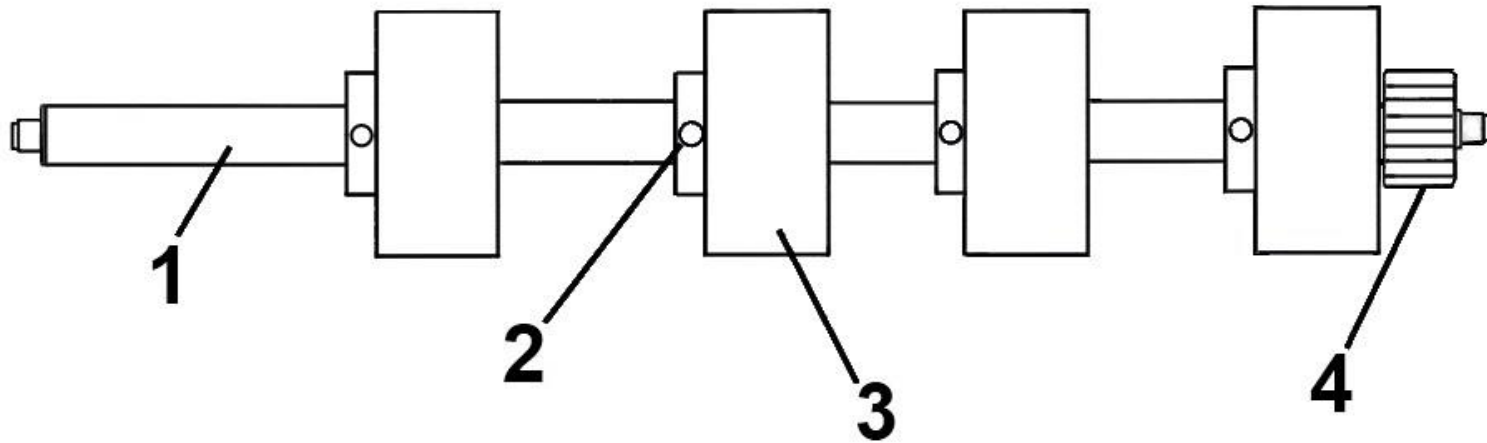


KEY	PART NO.	DESCRIPTION	QTY
	123-2594	UPPER MAIN PLATEN ASSEMBLY (INCLUDES PARTS LISTED BELOW)	1
1		123-2569 PINCH ROLLER	18
2		123-2570 PINCH ROLLER AXLE	18
3		123-2573 ENTRY PINCH SPRING	9
4		123-2574 UPPER PLATEN BIAS SPRING	4
5		123-2572 PINCH SPRING	9



## GROUP 4 – FRONT FEED SHAFT ASSEMBLY

ASSEMBLY PART # 42-101-06



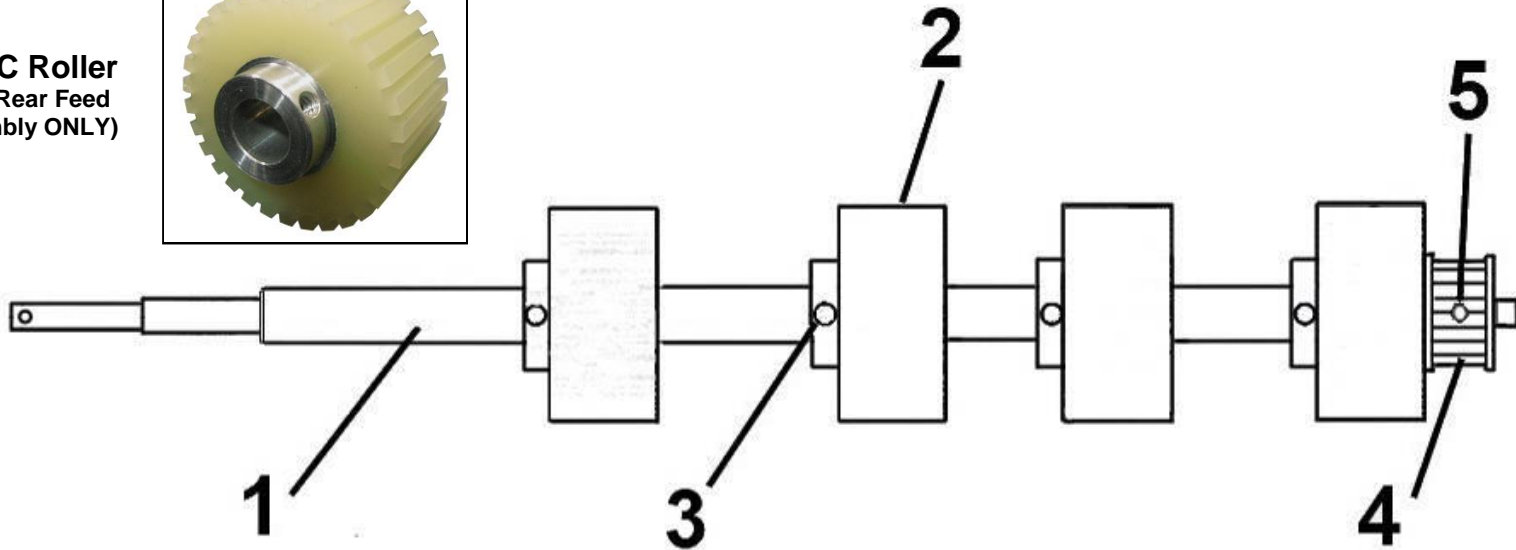
KEY	PART NO.	DESCRIPTION	QTY
	42-101-06	FRONT FEED SHAFT ASSEMBLY	
1.	42-101-07	FRONT FEED SHAFT	1
2.	123-1861	SET SCREW, 10-24 x 1/4 CUP POINT	4
3.	90-102-21	FEED ROLLER (TAN)	4
4.	94-105-04	PULLEY (16 GROOVES)	1
	123-0035*	BALL BEARING NMB R-4HH	2

\*NOT SHOWN, NOT INCLUDED IN ASSEMBLY (42-101-06)

## GROUP 5 – REAR FEED SHAFT ASSEMBLY

### ASSEMBLY PART # 42-101-02

**2**  
**90-102-21C Roller**  
 (For use on Rear Feed  
 Roller Assembly ONLY)

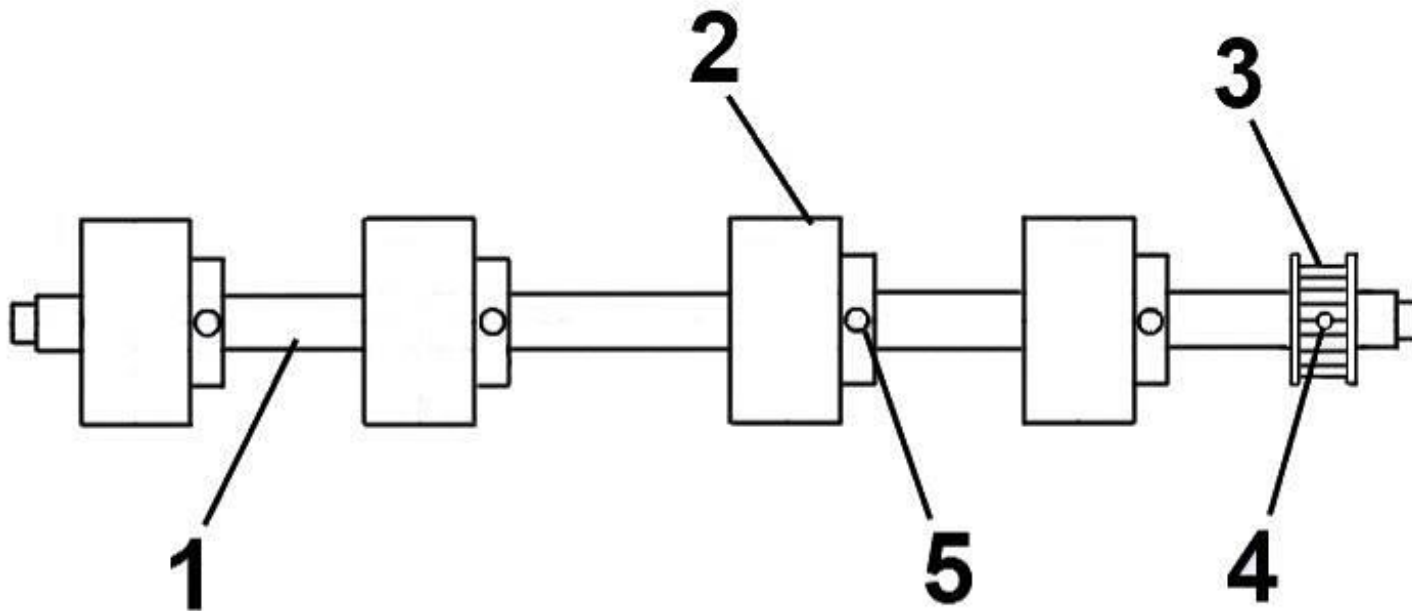


KEY	PART NO.	DESCRIPTION	QTY
	42-101-02	REAR FEED SHAFT ASSEMBLY	
1.	42-101-03	REAR FEED SHAFT	1
2.*	90-102-21	FEED ROLLER (SMOOTH TREAD ROLLER-TAN)	4
	90-102-21C	FEED ROLLER (SERRATED TREAD ROLLER-TAN)	4
3.	123-1861	SET SCREW, 10-24 x 1/4 CUP POINT	4
4.	29-103-11	PULLEY (16 GROOVES)	1
5.	123-0322	SET SCREW	1
	123-0384**	BALL BEARING NMB 608ZZ	1
	123-0035*	BALL BEARING NMB R-4HH	1
(*) 90-102-21 Roller can be used on both Rear and Middle Feed Rollers. 90-102-21C Roller can be used for Rear Feed Roller Assembly ONLY			

\*\*NOT SHOWN, NOT INCLUDED IN ASSEMBLY (42-101-02)

## GROUP 6 – DELIVERY SHAFT ASSEMBLY

ASSEMBLY PART # 42-102-08

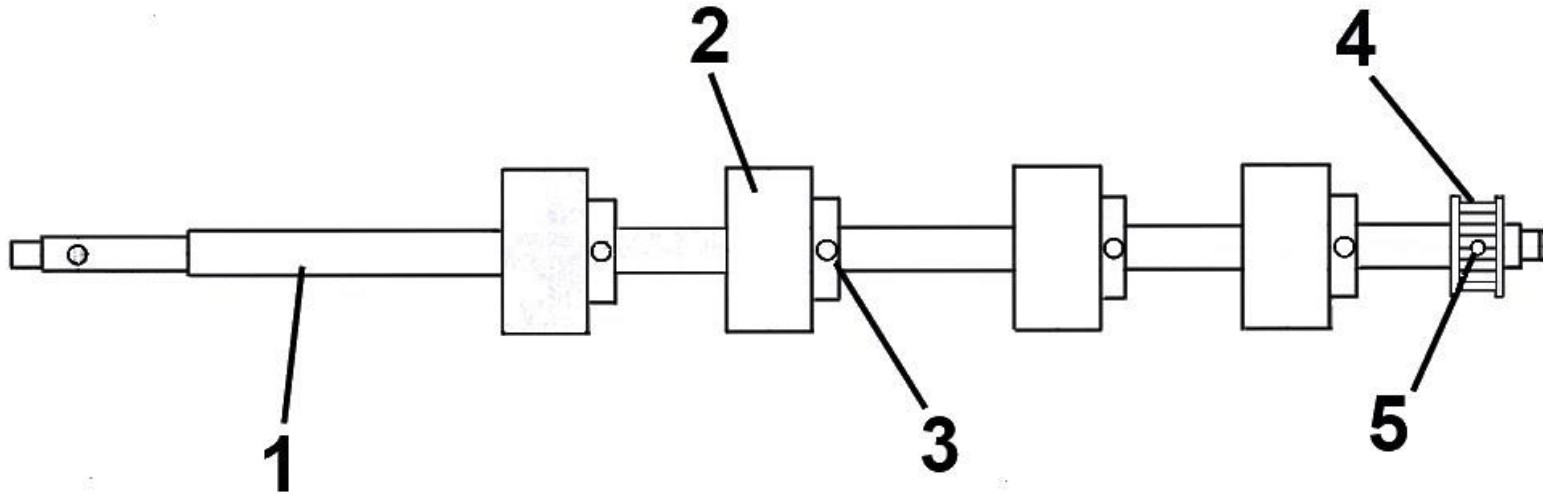


KEY	PART NO.	DESCRIPTION	QTY
	42-102-08	DELIVERY SHAFT ASSEMBLY	
1.	42-102-09	DELIVERY SHAFT	1
2.	42-102-22	RUBBER FEED ROLLER (BLACK)	4
3.	71-122-06	PULLEY (12 GROOVES, XL)	1
4.	123-0036	ROLL PIN, 3-32 x 5/8	1
5.	123-0322	SET SCREW	4
	123-1064*	BEARING 1/4 x 5/8 x .195 SEALED	2

\*NOT SHOWN, NOT INCLUDED IN ASSEMBLY (42-102-08)

## GROUP 7 – PULL-OUT SHAFT ASSEMBLY

ASSEMBLY PART # 42-102-02

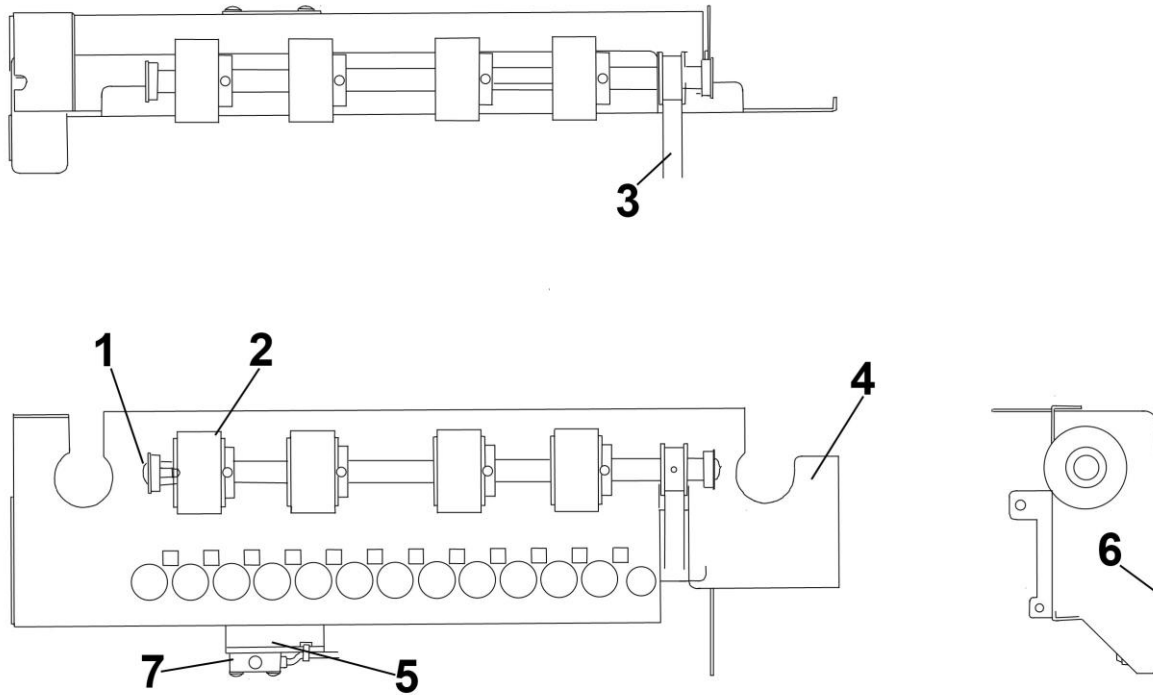


KEY	PART NO.	DESCRIPTION	QTY
	42-102-02	PULL OUT SHAFT ASSEMBLY	
1.	42-102-04	PULL OUT SHAFT	1
2.	42-102-22	RUBBER ROLLER (BLACK)	4
3.	123-0322	SET SCREW	4
4.	71-122-06	PULLEY (12 GROOVES XL)	1
5.	123-0036	ROLL PIN, 3-32 x 5/8	1
	123-0035*	BALL BEARING NMB R-4HH	1
	123-0384*	BALL BEARING NMB 608ZZ	1

\*NOT SHOWN, NOT INCLUDED IN ASSEMBLY (42-102-02)

# GROUP 8 – FRONT CENTER PLATE ASSEMBLY

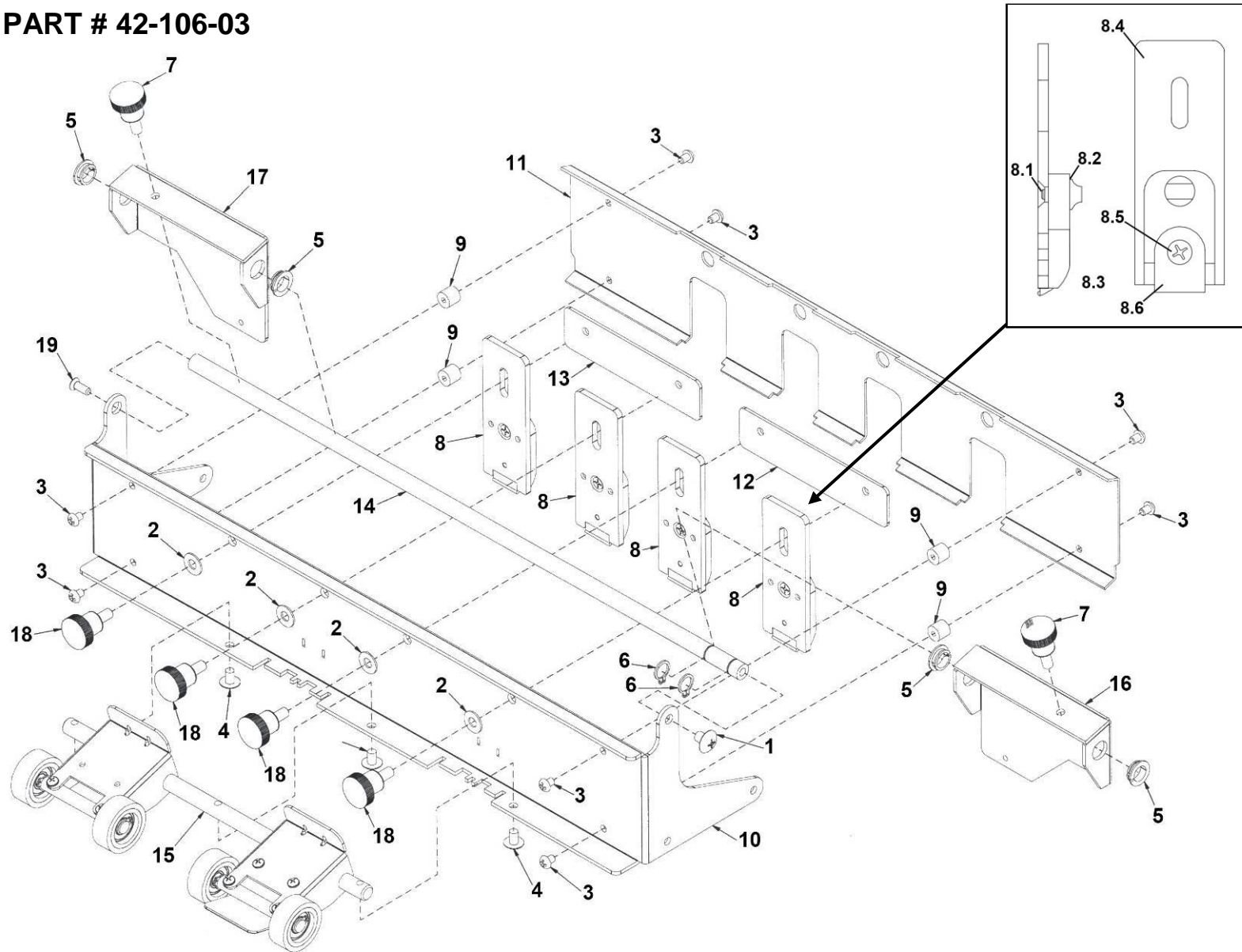
## ASSEMBLY PART # 42-103-03



KEY	PART NO.	DESCRIPTION	QTY
	42-103-03	FRONT CENTER PLATE ASSEMBLY	
1.	123-1136	SCREW	2
2.	42-102-08	DELIVERY SHAFT ASSEMBLY	1
3.	123-2437	TIMING BELT (94 x L031)	1
4.	42-103-04	FRONT CENTER PLATE WELDMENT	1
5.	42-103-13	SENSOR HOLDER ASSEMBLY	1
6.	123-0461	SCREW, 6-32 x 3/16 PHILLIPS ROUND HEAD, SS	2
7.	42-500-18	MEDIA SENSOR ASSEMBLY	1

# GROUP 9 – METERING PLATE ASSEMBLY

## ASSEMBLY PART # 42-106-03





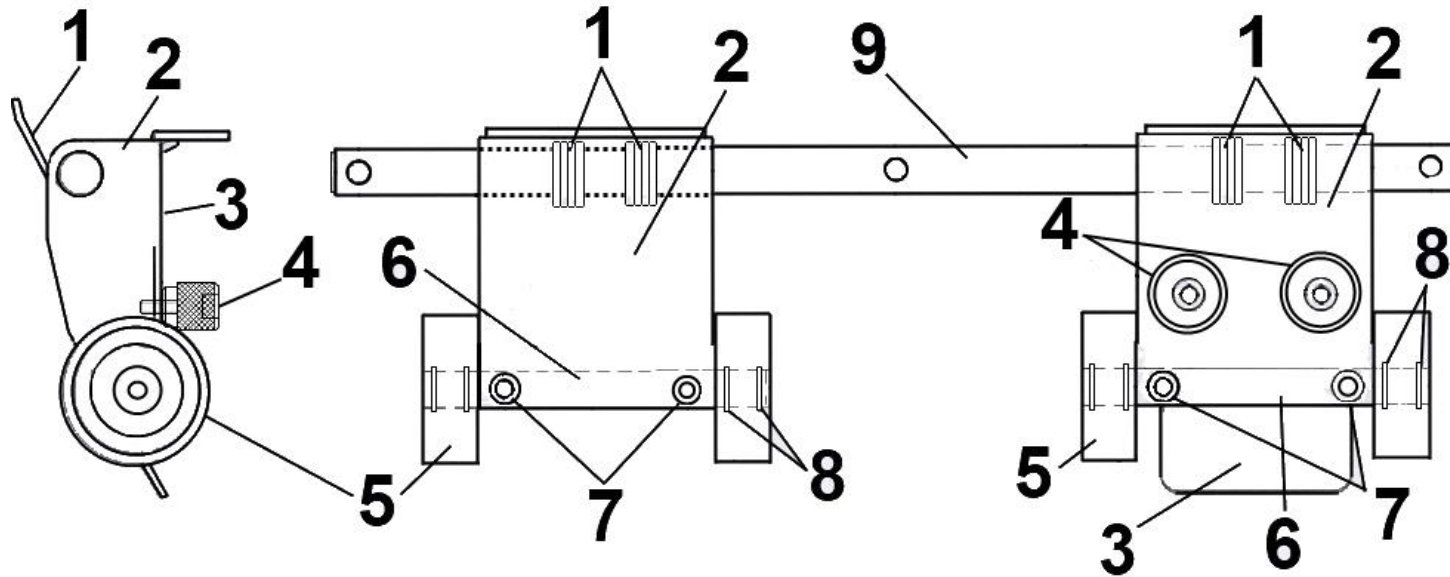
## GROUP 9 – METERING PLATE ASSEMBLY

### ASSEMBLY PART # 42-106-03

KEY	PART NO.	DESCRIPTION	QTY
	42E-106-03	METERING PLATE ASSEMBLY	
1	123-0017	SCREW, 10-32 x 1/4 TRUSS HD. PH. SS	1
2	123-0148	WASHER, 7/16 OD x 0.200 ID x 1/32	4
3	123-0461	SCREW, 6-32 x 3/16 RND HD PH SS	8
4	123-1136	SCREW, 8-32 x 1/4 TRUSS HD PH SS	3
5	123-2316	BEARING, CLIP 5/16 x .375	4
6	123-2350	RING, EXT. RETAINING FOR 5/16" SHAFT	2
7	24-101-11	SCREW, 10-32 PAPER GUIDE	2
8	29-101-12	ASSEMBLY, METERING FINGER	4
8.1	123-1310	SCREW, 6 x 3/8 PH, FL SELF-TAP 18-8 TYPE A	4
8.2	21-101-15	METERING KNOB	4
8.3	66-101-13	WASHER, SEPARATOR	4
8.4	29-101-13	METERING FINGER	4
8.5	123-0751	SCREW, 6-32 x 3/8 PH UNDERCUT SS	4
8.6	90-103-09	METERING SEGMENT (separator tip)	4
9	29-101-16	SPACER	4
10	42-106-04	METERING BRACKET	1
11	42E-106-06	COVER, METERING BRACKET	1
12	42-106-08	METERING FINGER BRACKET	1
13	42-106-09	METERING FINGER BRACKET 2	1
14	42E-106-14	BAR, SIDE GUIDE	1
15	42-106-18	ARM GUIDE BRACKET ASSY. (GROUP 11)	1
16	42-107-18	SIDE GUIDE HOLDER, LEFT HAND	1
17	42-107-19	SIDE GUIDE HOLDER, RIGHT HAND	1
18	94-104-06	KNOB, METERING BRACKET	4

## GROUP 10 – ARM GUIDE BRACKET ASSEMBLY

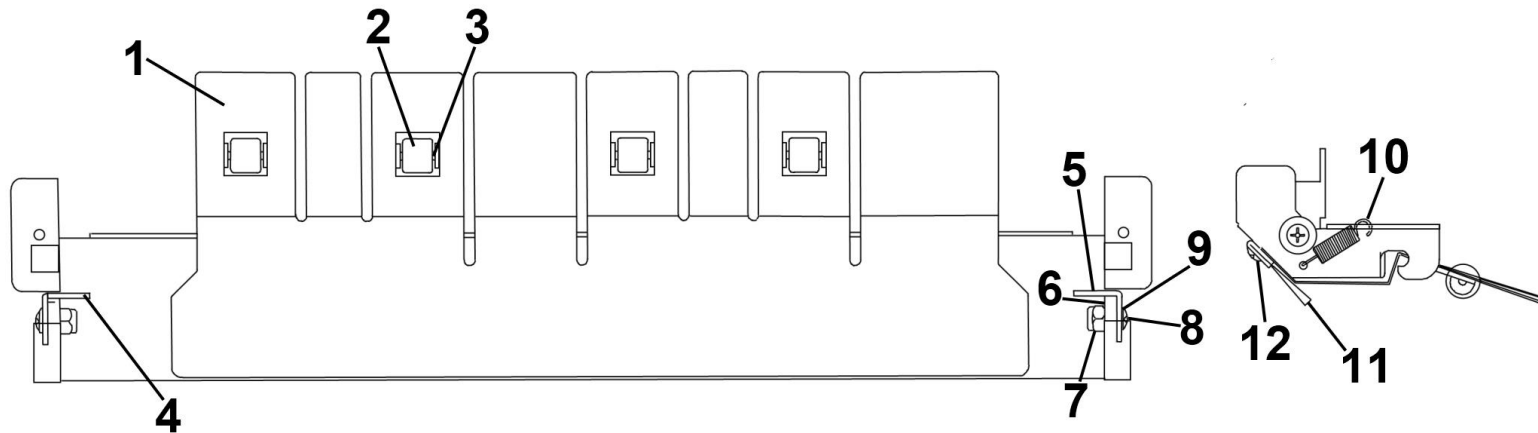
### ASSEMBLY PART # 42-106-18



KEY	PART NO.	DESCRIPTION	QTY
	42-106-18	ARM GUIDE BRACKET ASSEMBLY	
1.	21-122-08	SPRING	4
2.	32-213-17	PULL OUT ROLLER ARM	2
3.	42-106-21	MEDIA SENSOR COVER, LEFT HAND	1
4.	42-106-25	THUMBSCREW	2
5.	97-115-02	ASSEMBLY, WHEEL WITH BEARING	4
6.	35-203-18	SHAFT, SHORT PULL OUT	2
7.	123-0976	SCREW, 4-40 x 1/4 PAN HD. PH. SS	4
8.	123-0257	RETAINING RING, #3100-25 - 1	8
9.	42-106-11	SHAFT, ARM GUIDE	1

# GROUP 11 – HOLD DOWN MEDIA BRACKET (ANTISTATIC BRUSH) ASSEMBLY

## ASSEMBLY PART # 42-103-20

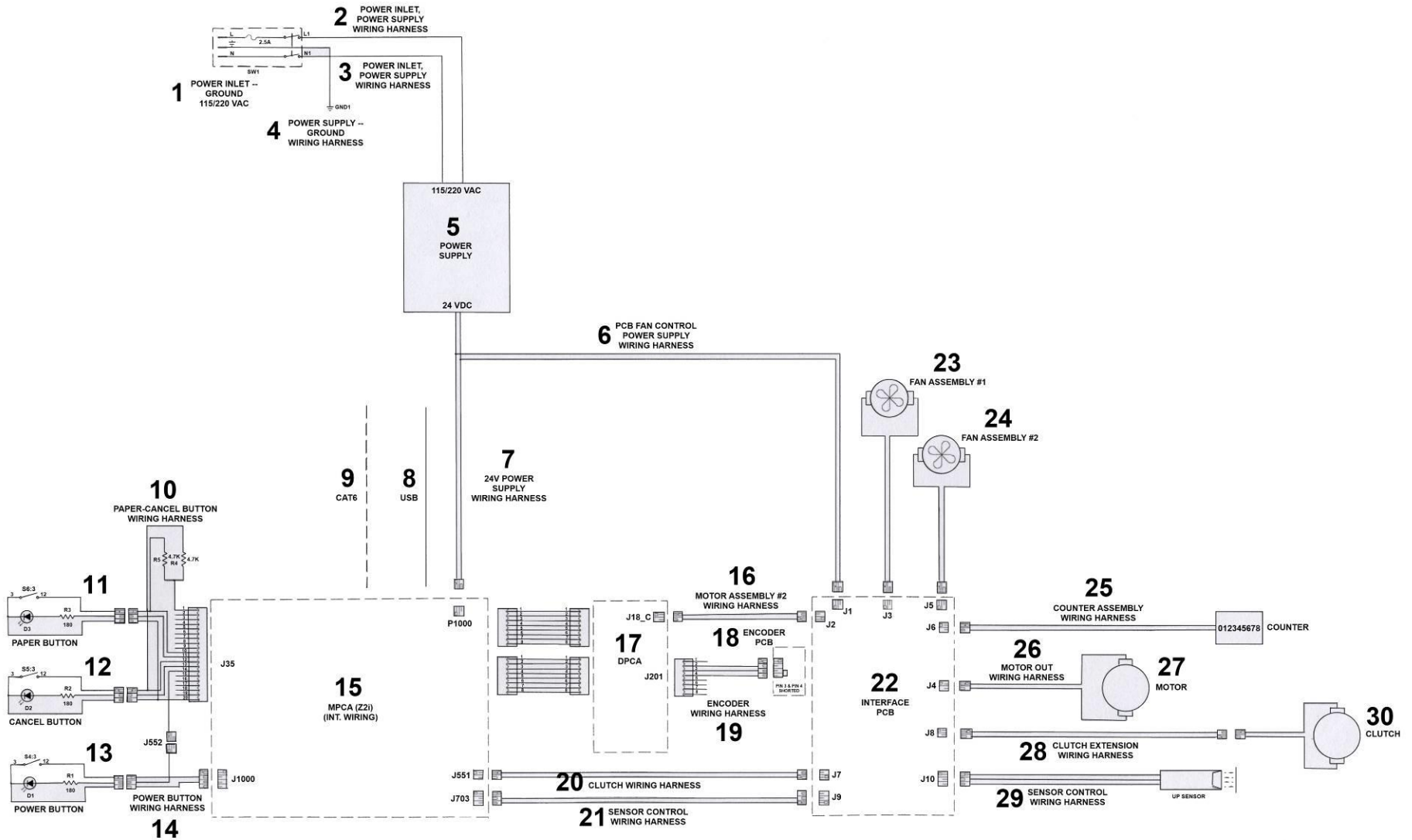


KEY	PART NO.	DESCRIPTION	QTY
	42-103-20	HOLD DOWN MEDIA BRACKET (ANTISTATIC BRUSH) ASSEMBLY	
1.	42-103-21	HOLD DOWN MEDIA BRACKET WELDMENT	1
2.	123-2224	HP REAR ROLLER	4
3.	123-2225	SPRING, HP REAR ROLLER	4
4.	42-103-28	HOLD DOWN MEDIA LEVER, LEFT HAND	1
5.	42-103-27	HOLD DOWN MEDIA LEVER, RIGHT HAND	1
6.	42-103-34	LOCK LEVER SPACER	2
7.	123-2273	LOCKNUT, 6-32 NYLON INSERT, SS	2
8.	123-0274	SCREW, 6-32 x 3/8 TRUSS HD PH SS	2
9.	123-2270	FLAT NYLON WASHER	2
10.	25-133-24	SPRING	2
11.	42-103-49	CONDUCTIVE NYLON BRUSH	1
12.	123-0976	SCREW, 4-40 x 1/4 PHILLIPS PAN HEAD	3

# GROUP 12 – ELECTRICAL (Z2i PRINT ENGINE)

Valid for Print Engine S/N SG09CZ1##### or lower.

NOTE: The Z2i engine was originally installed in printer S/N100027598 and lower.



## GROUP 12 – ELECTRICAL (Z2i PRINT ENGINE)

Valid for Print Engine S/N SG09CZ1##### or lower.

NOTE: The Z2i engine was originally installed in printer S/N100027598 and lower.

KEY	PART NO.	DESCRIPTION	QTY
1.	42-500-01	MAIN POWER SWITCH ASSEMBLY	1
2.	42-500-03	POWER INLET, POWER SUPPLY (L)	1
3.	42-500-02	POWER INLET, POWER SUPPLY (N)	1
4.	42-500-04	POWER SUPPLY, GRD WIRING HARNESS	1
5.	123-2395	UNIVERSAL POWER SUPPLY	1
6.	42-500-06	PCB FAN CONTROL POWER SUPPLY WH	1
7.	42-500-05	24V POWER SUPPLY WIRING HARNESS	1
8.	123-2458	USB CABLE	1
9.	123-2447	CAT6 NETWORK CABLE	1
10.	42-500-17	PAPER/CANCEL BUTTON WIRING HRNSS	1
11.	42-500-22	PAPER BUTTON ASSEMBLY	1
12.	42-500-21	CANCEL BUTTON ASSEMBLY	1
13.	42-500-19	POWER BUTTON ASSEMBLY	1
14.	42-500-15	POWER BUTTON WIRING HARNESS	1
15.	N/A	MAIN PRINTED CIRCUIT BOARD (Z2i) for Print Engine S/N SG09CZ1##### < Not Available. Replace Print Engine	1
16.	42-500-07	MOTOR ASSEMBLY #2 WIRING HARNESS	1
17.	N/A	DPCA BOARD ASSEMBLY (Z2i) for Print Engine S/N SG09CZ1##### < Not Available. Replace Print Engine	1

KEY	PART NO.	DESCRIPTION	QTY
18.	42-500-27	ENCODER PC BOARD ASSY, FEED SEC.	1
19.	42-500-25	ENCODER WIRING HARNESS	1
20.	42-500-20	CLUTCH WIRING HARNESS	1
21.	42-500-10	SENSOR CONTROL WIRING HARNESS	1
22.	42-500-30	INTERFACE PC BOARD	1
23.	42-500-08	FAN ASSEMBLY #1	1
24.	42-500-14	FAN ASSEMBLY #2	1
25.	42-500-09	COUNTER ASSEMBLY	1
26.	42-500-16	MOTOR OUT WIRING HARNESS	1
27.	42-101-16	MOTOR, GEAR, 30.3 VDC (MOTOR ONLY)	1
28.	42-500-13	CLUTCH EXTENSION WIRING HARNESS	1
29.	42-500-18	MEDIA SENSOR ASSEMBLY	1
30.	34-500-19	CLUTCH	1

USB, ETHERNET CABLES AND POWER CORDS (*NOT SHOWN)			
*	123-0635	POWER CORD 115V, 6' DOMESTIC/JAPAN	1
*	123-0735	POWER CORD 220V EUROPE	1
*	123-2187	POWER CORD 220V CHINA	1
*	123-2407	POWER CORD 220V UK	1
*	123-1895	USB CABLE, 10 FT.	1
*	123-2525	ETHERNET CABLE, 10 FT.	1

+ Please provide the serial number of the printer and serial number of the print engine when placing an order for this board. It must be programmed with serial number

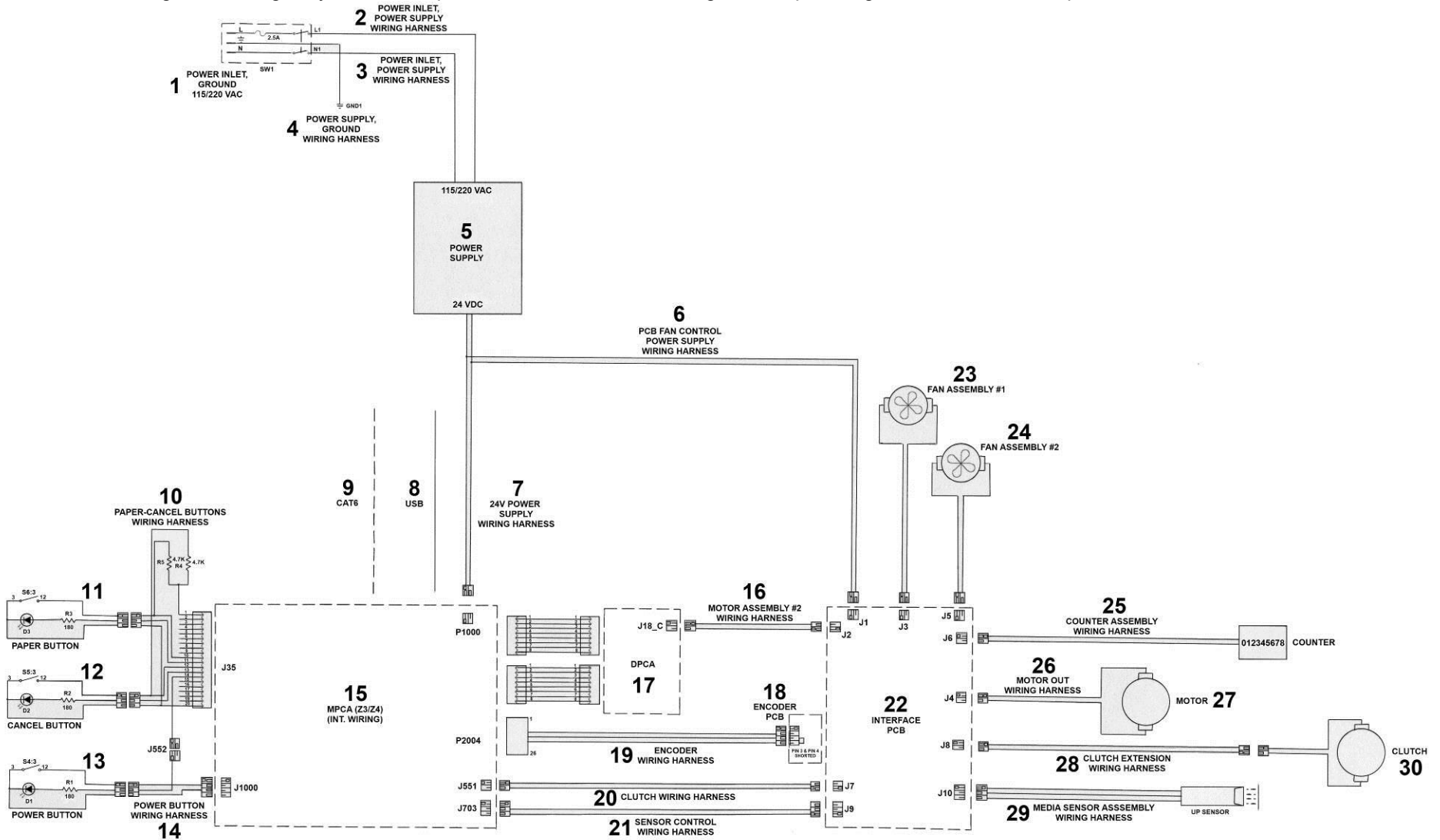
# GROUP 12A – ELECTRICAL (Z3/Z4/MR PRINT ENGINE)

Valid for Print Engine S/N SG10KZ1##### or higher and Print Engines that have the S/N sequence MY###MR#####

NOTE: The Z3 engine was originally installed in printer S/N 100027599 - 100028436 & 100028457 – 100028887.

The Z4 engine was originally installed in printer S/N 100028888 and higher; plus S/N 100028437 to 100028456.

The MR engine was originally installed in printer S/N 100031392 and higher. MR print engine serial number sequence MY###MR#####





## GROUP 12A – ELECTRICAL (Z3/Z4/MR PRINT ENGINE)

Valid for Print Engine S/N SG10KZ1##### or higher and Print Engines that have the S/N sequence MY###MR#####

NOTE: The Z3 engine was originally installed in printer S/N100027599 - 100028436 & 100028457 – 100028887.

The Z4 engine was originally installed in printer S/N 100028888 and higher; plus S/N 100028437 to 100028456.

The MR engine was originally installed in printer S/N 100031392 and higher. MR print engine serial number sequence MY###MR#####

KEY	PART NO.	DESCRIPTION	QTY
1.	42-500-01	MAIN POWER SWITCH ASSEMBLY	1
2.	42-500-03	POWER INLET, POWER SUPPLY (L)	1
3.	42-500-02	POWER INLET, POWER SUPPLY (N)	1
4.	42-500-04	POWER SUPPLY – GRD WIRING HARNESS	1
5.	123-2395	UNIVERSAL POWER SUPPLY	1
6.	42-500-06	PCB FAN CONTROL POWER SUPPLY WH	1
7.	42-500-05	24V POWER SUPPLY WIRING HARNESS	1
8.	123-2458	USB CABLE	1
9.	123-2447	CAT6 NETWORK CABLE	1
10.	42-500-17	PAPER/CANCEL BUTTON WIRING HRNSS	1
11.	42-500-22	PAPER BUTTON ASSEMBLY	1
12.	42-500-21	CANCEL BUTTON ASSEMBLY	1
13.	42-500-19	POWER BUTTON ASSEMBLY	1
14.	42-500-15	POWER BUTTON WIRING HARNESS	1
15.	42-500-200 <sup>+</sup>	MAIN PC BOARD ASSEMBLY (Z3, Z4, MR) For Print Engine S/N SG10KZ1##### or higher	1
16.	42-500-07	MOTOR ASSEMBLY #2 WIRING HARNESS	1
17.	123-2473	DPCA BOARD ASSEMBLY	1

KEY	PART NO.	DESCRIPTION	QTY
18.	42-102-15	ENCODER PC BOARD ASSY., FEED SEC.	1
19.	42-500-26	ENCODER WIRING HARNESS	1
20.	42-500-20	CLUTCH WIRING HARNESS	1
21.	42-500-10	SENSOR CONTROL WIRING HARNESS	1
22.	42-500-30	INTERFACE PC BOARD	1
23.	42-500-08	FAN ASSEMBLY #1	1
24.	42-500-14	FAN ASSEMBLY #2	1
25.	42-500-09	COUNTER ASSEMBLY	1
26.	42-500-16	MOTOR OUT WIRING HARNESS	1
27.	42-101-16	MOTOR, GEAR, 30.3 VDC (MOTOR ONLY)	1
28.	42-500-13	CLUTCH EXTENSION WIRING HARNESS	1
29.	42-500-18	MEDIA SENSOR ASSEMBLY	1
30.	34-500-19	CLUTCH	1
<b>USB, ETHERNET CABLES AND POWER CORDS (*NOT SHOWN)</b>			
*	123-0635	POWER CORD 115V, 6' DOMESTIC/JAPAN	1
*	123-0735	POWER CORD 220V EUROPE	1
*	123-2187	POWER CORD 220V CHINA	1
*	123-2407	POWER CORD 220V UK	1
*	123-1895	USB CABLE, 10 FT.	1
*	123-2525	ETHERNET CABLE, 10 FT.	1

<sup>+</sup> Please provide the serial number of the printer and serial number of the print engine when placing an order for this board. It must be programmed with serial number



## RECOMMENDED SPARE PARTS

Items you should stock; in addition to “Normal Wear Parts and Supplies” on next page.

PART NO.	DESCRIPTION	QTY PER PRINTER
123-1398	2.5 AMP SLO-BLO FUSE (POWER INLET ASSY. – NOTE: SPARE FUSE SUPPLIED IN FUSE HOLDER)	1
123-2431	ENCODER WHEEL, FEEDER & PRINT ENGINE (CODEWHEEL)	1
123-2432	ENCODER SENSOR PC BOARD (PRINT ENGINE)	1
123-2517	SENSOR, TOP ENTRY	1
123-2518	SENSOR, BOTTOM ENTRY	1
123-2519	SENSOR, EXIT PCA	1
123-2520	SENSOR, SLED & LIFTING ARM PCA (NOT DIRECTLY COMPATIBLE WITH Z2I ENGINE)	3
123-2528	BRACKET, MOTOR SLED DRIVE	1
123-2546	SERVICE STATION TRACK	2
123-2576	LARGE GEAR, MOTOR SLED DRIVE	1
123-2585	MEDIUM GEAR, MOTOR SLED DRIVE	1
42-102-15	ASSEMBLY, ENCODER SENSOR (FEED SECTION, Z3, Z4, MR PRINT ENGINE UNITS)	1
42-102-18	ASSEMBLY, ENCODER WHEEL (WHEEL AND HUB FOR FEED SECTION)	1
42-103-13	ASSEMBLY, SENSOR HOLDER (MEDIA FEED SENSOR & BRACKET)	1
42-900-45	ASSEMBLY, PRINTHEAD LATCH WITH WARNING LABEL (USA)	1
42-900-50	ASSEMBLY, PRINTHEAD LATCH WITH WARNING LABEL (EUROPE)	1
42-900-55	ENVELOPE PRINTING ATTACHMENT KIT WITH PPS SPACERS	1
42-900-05	KIT, SERVICE STATION LIFTING ARMS (REPLACES 42-600-10)	1
42-900-10	INK REVOLVER PUMP (INCL. HOSE CONNECTORS)	1
42-900-15	INK REVOLVER VALVE (INCL. HOSE CONNECTORS)	1
42-900-25	SERVICE STATION GUIDE (FOR UNITS THAT DID NOT INCLUDE THIS ITEM)	1
42-900-30	LATCH PIN KIT (LOWER)	2
42-900-35	LATCH PIN KIT (UPPER)	2
42-900-40	LIFT ARM GEAR KIT (includes gear and c-clip)	1

Continued on next page.

## RECOMMENDED SPARE PARTS (continued)

Items you should stock; in addition to “Normal Wear Parts and Supplies” on next page.

Additional Items Suggested for Quicker Response Times and High Machine Populations		
PART NO.	DESCRIPTION	QTY PER PRINTER
123-1708	BELT, TIMING (80XL037, FRONT FEED SHAFT)	1
123-2395	POWER SUPPLY	1
123-2436	BELT, TIMING, XLO 37 (MAIN MOTOR DRIVE)	1
123-2437	BELT, TIMING, XLO 31 (CENTER PLATE ASSEMBLY)	1
123-2442	O-RING (3/32 X 6.50 90A SD, EXIT ROLLER)	1
123-2446	BELT, TRANSMISSION	1
34-500-19	ASSEMBLY, CLUTCH (24V CW)	1
42-101-16	MOTOR, 30.3 VDC (FEED SECTION – MOTOR ONLY)	1
42-500-08	BOTTOM FAN ASSEMBLY #1	1
42-500-14	SIDE FAN ASSEMBLY #2	1
42-500-30	INTERFACE BOARD	1
42-500-200 <sup>1</sup>	MAIN PRINTED CIRCUIT BOARD (FOR PRINT ENGINE S/N SG10KZ1##### or higher)	1
42-900-100 <sup>2</sup>	PRINT ENGINE (42-900-100 Replaces 42-110-02)	1
POWER CORDS AND USB, ETHERNET CABLES		
123-0635	POWER CORD 115V, 6' DOMESTIC/JAPAN	1
123-0735	POWER CORD 220V EUROPE	1
123-2187	POWER CORD 220V CHINA	1
123-2407	POWER CORD 220V UK	1
123-1895	USB CABLE, 10 FT.	1
123-2525	ETHERNET CABLE, 10 FT.	1

**IMPORTANT:** See Footnotes before placing order.

<sup>1</sup> Please provide the serial number of the printer and serial number of the print engine when placing an order for this board. It must be programmed with serial number.

<sup>2</sup> To install the Z4 Print Engine into Printer S/N 100027598 or lower; the Front Side-Frame (operator side) must be modified. Please contact Tech Support for details.

## NORMAL WEAR & CONSUMABLE PARTS

PART NO.	DESCRIPTION	Normal Wear Consumable	QTY PER PRINTER
123-2224	HP REAR ROLLER C64904077 (HOLD DOWN MEDIA BRACKET)	NORMAL WEAR	4
123-2478	ASSEMBLY, WIPER MODULE	NORMAL WEAR	1
123-2480	ASSEMBLY, WIPER ROLLER	CONSUMABLE	1
123-2481	ASSEMBLY, MODULE CAP	NORMAL WEAR	1
123-2482	ASSEMBLY, MODULE PLATEN PRINT	NORMAL WEAR	1
123-2483	ASSEMBLY, SLED - MAINTENANCE MODULE (SERVICE STATION)	NORMAL WEAR	1
123-2487	ASSY., WASTE INK TRAY (REPLACES 123 - 2470)	CONSUMABLE	1
22936	WASTE INK TRAY PAD	CONSUMABLE	1
42-102-22	ASSY., RUBBER FEED ROLLER (BLACK)	NORMAL WEAR	8
42-103-49	ASSY., CONDUCTIVE NYLON BRUSH	NORMAL WEAR	1
90-102-21	ASSY., FEED ROLLER (TAN)	NORMAL WEAR	8
90-103-09	ASSY., SEGMENT METERING (SEPARATOR)	NORMAL WEAR	4
97-115-02	ASSEMBLY, WHEEL WITH BEARING	NORMAL WEAR	4

## SUPPLIES

"

PART NO.	DESCRIPTION	QTY PER PRINTER
CJ-20	PRINthead CARTRIDGE	1
CJ-24	BLACK INK TANK, 250 ML	2
CJ-21	CYAN INK TANK, 250 ML	1
CJ-23	MAGENTA INK TANK, 250 ML	1
CJ-22	YELLOW INK TANK, 250 ML	1

Á

## PACKING MATERIALS

"

PART NO.	DESCRIPTION	QTY PER PRINTER
42-575-30	LID	1
42-575-35	SKID & FOAM MOLDS	1



## SCREWS KIT (PART NO. 42-900-120)

PART NO.	DESCRIPTION	QTY PER PRINTER	QTY PER KIT
<b>42-900-120 SCREWS KIT INCLUDES:</b>			
123-0017	SCREW, 10-32 x 1/4 PH TRUSS HEAD	17	6
123-0185	SCREW, 10-32 x 3/8 SOC. HD. CAP, BLACK	2	1
123-0274	SCREW, 6-32 x 3/8 TRUSS HD PH SS	2	1
123-0275	SCREW, 6-32 x 1/4 OVAL CSK HD. PH SS	12	4
123-0322	SET SCREW, 8-32 x 1/4 HEX SOC. CUP PT.	10	4
123-0446	SCREW, 8-32 x 5/16 FL HD. PH UNDERCUT	1	1
123-0461	SCREW, 6-32 x 3/16 RD HD. PH SS	21	8
123-0612	SCREW, 6-32 x 1/4 PAN HD. PH SS	8	4
123-0701	SCREW, 10-32 x 3/16 TRUSS HD. PH SS	4	2
123-0751	SCREW, 6-32 x 3/8 PH UNDERCUT SS	1	1
123-0880	ALLEN HEAD SCREW	1	1
123-0976	SCREW, 4-40 x 1/4 PAN HD. PH SS	8	4
123-1023	SCREW, 4-40 x 5/16 PAN HD, PH SS	1	1
123-1135	SCREW, 6-32 x 1/4 TRUSS HD. PH SS	17	6
123-1136	SCREW, 8-32 x 1/4 TRUSS HD. PH SS	5	2
123-1178	SCREW, 6-32 x 1/4 FL HD. PH UNDERCUT	4	2
123-1210	SCREW, 10-32 x 3/8 BTN HD., SOC. CAP SS BLACK	2	1
123-1310	SCREW, 6 x 3/8 PH, FL SELF-TAP 18-8 TYPE A	1	1
123-1323	SCREW, 4-40 x 1/8 TRUSS HD. PH SS	10	5
123-1680	SCREW, 10-32 x 1/2 SOC. HD. CAP	1	1
123-1684	SCREW, 8-32 x 1/2 FL HD. PH UNDERCUT	1	1
123-1861	SET SCREW, 10-24 x 1/4 CUP POINT	8	4
123-2007	SCREW, 6-32 x 1/2 PAN HD. PH SS	2	1
123-2067	SCREW, 6-32 x 5/16 SOC. HD. CAP	2	1
123-2409	SCREW, 6-32 x 5/16 PAN HD. SS	2	1
123-2452	SCREW, 12-24 x 3/8 PAN HD. SS	4	2
123-2453	SCREW, PHILLIPS HEAD	1	1
123-2455	SCREW, METRIC M4, PAN HD., PH	4	2
123-2468	ALLEN HEAD SCREWS	2	1
<b>TOTAL</b>			<b>70</b>

# INDEX

PART NO.	GROUP	KEY
123-0017	1	1
123-0017	2	1
123-0017	2.1	1
123-0017	9	1
123-0036	6	4
123-0036	7	5
123-0148	1	2
123-0148	1	31.5
123-0148	2.1	2
123-0148	9	2
123-0185	2	2
123-0237	2	3
123-0252	1	3
123-0252	2.1	3
123-0257	10	8
123-0274	11	8
123-0275	2.1	4
123-0312	2.1	13.1
123-0322	2.1	15.1
123-0322	5	5
123-0322	6	5
123-0322	7	3
123-0384	2.1	16.1
123-0446	2	4
123-0461	1	4
123-0461	2	5
123-0461	2.1	5
123-0461	8	6
123-0461	9	3
123-0612	2	6
123-0612	2	14.1
123-0635	12	--
123-0635	12A	--
123-0683	1	36
123-0701	1	5
123-0735	12	--
123-0735	12A	--
123-0751	9	8.5
123-0880	3.2	1.4
123-0975	1	11
123-0976	2.1	6
123-0976	3.2	1.7
123-0976	10	7
123-0976	11	12
123-1023	3.2	1.9
123-1112	1	6
123-1131	1	7
123-1132	2	8
123-1135	1	8

PART NO.	GROUP	KEY
123-1135	2.1	16.2
123-1136	8	2
123-1136	9	4
123-1178	1	9
123-1210	2.1	7
123-1257	1	10
123-1310	9	8.1
123-1323	2	9
123-1323	3.2	1.6
123-1398	2	24.1
123-1680	2	14.2
123-1680	2.1	12.1.1
123-1684	2	10
123-1708	2.1	8
123-1828	2.1	13.2
123-1861	4	2
123-1861	5	3
123-1895	12	--
123-1895	12A	--
123-2007	1	12
123-2067	2	14.3
123-2187	12	--
123-2187	12A	--
123-2224	11	2
123-2225	11	3
123-2254	3.2	1.2
123-2270	3.3	2.1
123-2270	11	9
123-2273	11	7
123-2316	9	5
123-2347	1	13
123-2350	9	6
123-2386	2	3
123-2687	2	4
123-2395	2	11
123-2395	12	5
123-2395	12A	5
123-2396	3.2	1.12
123-2407	12	--
123-2407	12A	--
123-2409	2.1	9
123-2429	3	10
123-2429	3.3	2.2
123-2431	2.1	16.6
123-2431	3	21
123-2432	3	21
123-2432	3.4	12
123-2436	2.1	10
123-2437	8	2
123-2438	1	14

PART NO.	GROUP	KEY
123-2441	3.2	1.5
123-2442	3.2	1.14
123-2446	3	22
123-2447	12	9
123-2447	12A	9
123-2450	2.1	15.2
123-2452	2	12
123-2453	3.2	1.11
123-2455	2	13
123-2458	12	8
123-2458	12A	8
123-2461	2.1	16.3
123-2468	3.3	1.1
123-2473	3.1	9
123-2473	3.4	14
123-2473	12A	17
123-2474	3	14
123-2475	3	15
123-2476	3.1	21
123-2477	3.1	11
123-2478	3.1	5
123-2479	3.1	7
123-2479	3.3	4.4
123-2479	3.4	2
123-2480	3.1	4
123-2481	3.1	1
123-2482	3.1	2
123-2483	3.1	6
123-2484	3.1	16
123-2487	3	13
123-2492	3.3	4.4
123-2492	3.4	3
123-2495	3.1	12
123-2504	3	5
123-2504	3.2	2.4
123-2515	3.1	12
123-2516	3.2	2.6
123-2516	3.4	7
123-2517	3.3	3.3
123-2517	3.4	5
123-2518	3.3	4.2
123-2518	3.4	6
123-2519	3.3	4.1
123-2519	3.4	9
123-2520	3.3	4.3
123-2520	3.4	13
123-2521	3	7
123-2522	3	18
123-2525	12	--
123-2525	12A	--

PART NO.	GROUP	KEY
123-2528	3.1	20
123-2546	3.1	17
123-2557	3.2	1.16
123-2557	3.4	8
123-2562	3.2	2.8
123-2562	3.4	11
123-2563	3.2	2.7
123-2563	3.4	10
123-2564	3.1	25
123-2565	3.1	26
123-2569	3.5	1
123-2570	3.5	2
123-2572	3.5	5
123-2573	3.5	3
123-2574	3.5	4
123-2576	3.1	19
123-2577	3.3	6
123-2585	3.1	18
123-2586	3	11
123-2586	3.3	7.1
123-2594	3	3
123-2594	3.3	3.6
123-2594	3.4	--
123-2601	3.2	2.5
123-2602	3.3	4
123-2610	3.1	29
123-2611	3.1	28
123-2613	3	21
123-2614	3.1	15
123-2614	3.4	4
123-2615	3.1	8
123-2616	3.1	10
123-2617	3.1	14
123-2636	3.1	6A
123-2646	3	19
123-2646	3.3	7
123-2686	3	4
123-2686	3.2	3.1
123-2687	3	16
123-2687	3.2	4
123-2491	3	17
123-2692	3.2	3
123-2708	3	20
123-2709	3.1	22
123-2710	3	2
123-2711	3.1	23
123-2725	3.2	5
123-2732	3.4	7A
123-2739	3	21
123-2740	3	21

<b>PART NO.</b>	<b>GROUP</b>	<b>KEY</b>
123-2741	3	21
123-2763	3.2	1.19
123-2764	3.2	1.120
20-100-227	1	15
21-101-15	9	8.2
21-122-08	10	1
24-101-11	9	7
25-133-24	11	10
27-102-10	2.1	13.3
29-101-12	9	8
29-101-13	9	8.4
29-101-16	9	9
29-103-08	2.1	13.4
29-103-08	2.1	16.4
29-103-09	2.1	13.5
29-103-11	5	4
29-103-12	2.1	11
32-102-22	2.1	13.6
32-213-17	10	2
34-500-19	2.1	13.7
34-500-19	12	30
34-500-19	12A	30
35-117-04	2	7
35-203-18	10	6
35-211-19	1	31.6
42-100-21	1	21
42-100-36	2	16
42-101-02	2.1	13
42-101-02	5	--
42-101-03	5	1
42-101-06	2.1	14
42-101-06	4	--
42-101-07	4	1
42-101-13	1	26
42-101-13	3.3	2
42-101-16	2.1	15
42-101-16	12	27
42-101-16	12A	27
42-101-23	2	14.5
42-102-02	2.1	16
42-102-02	7	--
42-102-04	7	1
42-102-08	8	3
42-102-08	6	--
42-102-09	6	1
42-102-14	2	17
42-102-15	2.1	16.5
42-102-15	12A	18
42-102-17	2	14.6
42-102-17	2.1	12.1.2

<b>PART NO.</b>	<b>GROUP</b>	<b>KEY</b>
42-102-18	2.1	16.6
42-102-22	6	2
42-102-22	7	2
42-102-25	2.1	16.7
42-103-03	2	18
42-103-03	2.1	12.2
42-103-03	11	--
42-103-04	8	5
42-103-13	8	4
42-103-20	1	27
42-103-21	11	1
42-103-27	11	5
42-103-28	11	4
42-103-30	2	19
42-103-34	11	6
42-103-36	2	20
42-103-37	2	21
42-103-49	11	11
42-104-02	2.1	17
42-104-07	2	22
42-106-04	9	10
42-106-08	9	12
42-106-09	9	13
42-106-11	10	9
42-106-14	9	14
42-106-18	9	15
42-106-18	10	--
42-106-21	10	3
42-106-25	10	4
42-107-16	1	31.2
42-107-17	1	31.3
42-107-18	9	16
42-107-19	9	17
42-107-20	1	31
42-107-21	1	31.1
42-110-06	3.2	1.1
42-110-08	3.2	1.10
42-110-09	3.2	1.3
42-110-10	3.2	1.8
42-110-15	3.2	1.13
42-110-25	3.2	1
42-110-30	3.3	3
42-110-31	3.3	3.1
42-110-35	3.3	1
42-110-92	3.1	13
42-110-52J	3.3	3.4
42-500-01	2	24
42-500-01	12	1
42-500-01	12A	1
42-500-02	12	3

PART NO.	GROUP	KEY
42-500-02	12A	3
42-500-03	12	2
42-500-03	12A	2
42-500-04	12	4
42-500-04	12A	4
42-500-05	12	7
42-500-05	12A	7
42-500-06	12	6
42-500-06	12A	6
42-500-07	12	16
42-500-07	12A	16
42-500-08	2	25
42-500-08	12	23
42-500-08	12A	23
42-500-09	1	32
42-500-09	12	25
42-500-09	12A	25
42-500-10	12	21
42-500-10	12A	21
42-500-13	12	28
42-500-13	12A	28
42-500-14	2.1	18
42-500-14	12	24
42-500-14	12A	24
42-500-15	12	14
42-500-15	12A	14
42-500-16	12	26
42-500-16	12A	26
42-500-17	12	10
42-500-17	12A	10
42-500-18	8	7
42-500-18	12	29
42-500-18	12A	29
42-500-19	1	33
42-500-19	12	13
42-500-19	12A	13
42-500-20	12	20
42-500-20	12A	20
42-500-21	1	34
42-500-21	12	12
42-500-21	12A	12
42-500-22	1	35
42-500-22	12	11
42-500-22	12A	11
42-500-25	12	19
42-500-26	12A	19
42-500-30	2	26
42-500-30	12	22
42-500-30	12A	22
42-500-200	3.4	1

PART NO.	GROUP	KEY
42-500-200	12A	15
42-550-15	1	37
42-900-05	3	9
42-900-05	3.3	4.5
42-900-05	3.4	16
42-900-10	3.1	24
42-900-10	3.2	2.2
42-900-15	3.1	27
42-900-15	3.2	2.1
42-900-20	3	--
42-900-25	3.4	15
42-900-26	3.4	15A
42-900-30	3.2	1.17
42-900-35	3.2	1.18
42-900-40	3	8
42-900-45	3	6
42-900-45	3.2	2.3
42-900-50	3	6
42-900-50	3.2	2.3
42-900-55	3.3	3.4
42-900-60	3.3	3.5
42-900-85	3.1	11
42-900-90	3.2	3.2
42-900-90	3.2	4.1
42-900-90	3.2	4.2
42-900-100	2	23
42-900-100	3	1
42-900-130	3.1	3
42-900-130	3.2	1.15
42E-100-03	2	14
42E-100-04	2	14.4
42E-100-09	1	17
42E-100-14	2	15
42E-100-17	1	20
42E-100-23	1	22
42E-100-27	1	23
42E-100-30N	1	24
42E-100-31N	1	25
42E-100-48	1	18
42E-100-55	1	19
42E-102-03	2.1	12.1
42E-106-03	1	28
42E-106-03	9	--
42E-106-06	9	11
42E-107-07	1	29
42E-107-09	1	30
66-101-13	9	8.3
71-122-06	6	3
71-122-06	7	4
90-102-21	4	3



<b>PART NO.</b>	<b>GROUP</b>	<b>KEY</b>
90-102-21	5	2
90-102-21C	5	2
90-103-09	9	8.6
90-103-52	2.1	13.8
90-103-52	2.1	14.1
90-103-52	2.1	16.8
94-106-06	1	31.4
94-104-06	9	18
94-105-04	4	4
95-100-32	2	14.7
95-104-04	2.1	14.2
97-115-02	10	5

<b>PART NO.</b>	<b>GROUP</b>	<b>KEY</b>
<b>*NOT SHOWN</b>		
123-0635*	12, 12A	
123-0735*	12, 12A	
123-1895*	12, 12A	
123-2187*	12, 12A	
123-2407*	12, 12A	
123-2525	12, 12A	
42-900-20*	3.3	