

FORMAX[®]

FD 262
Tabletop Single-Head Tabber

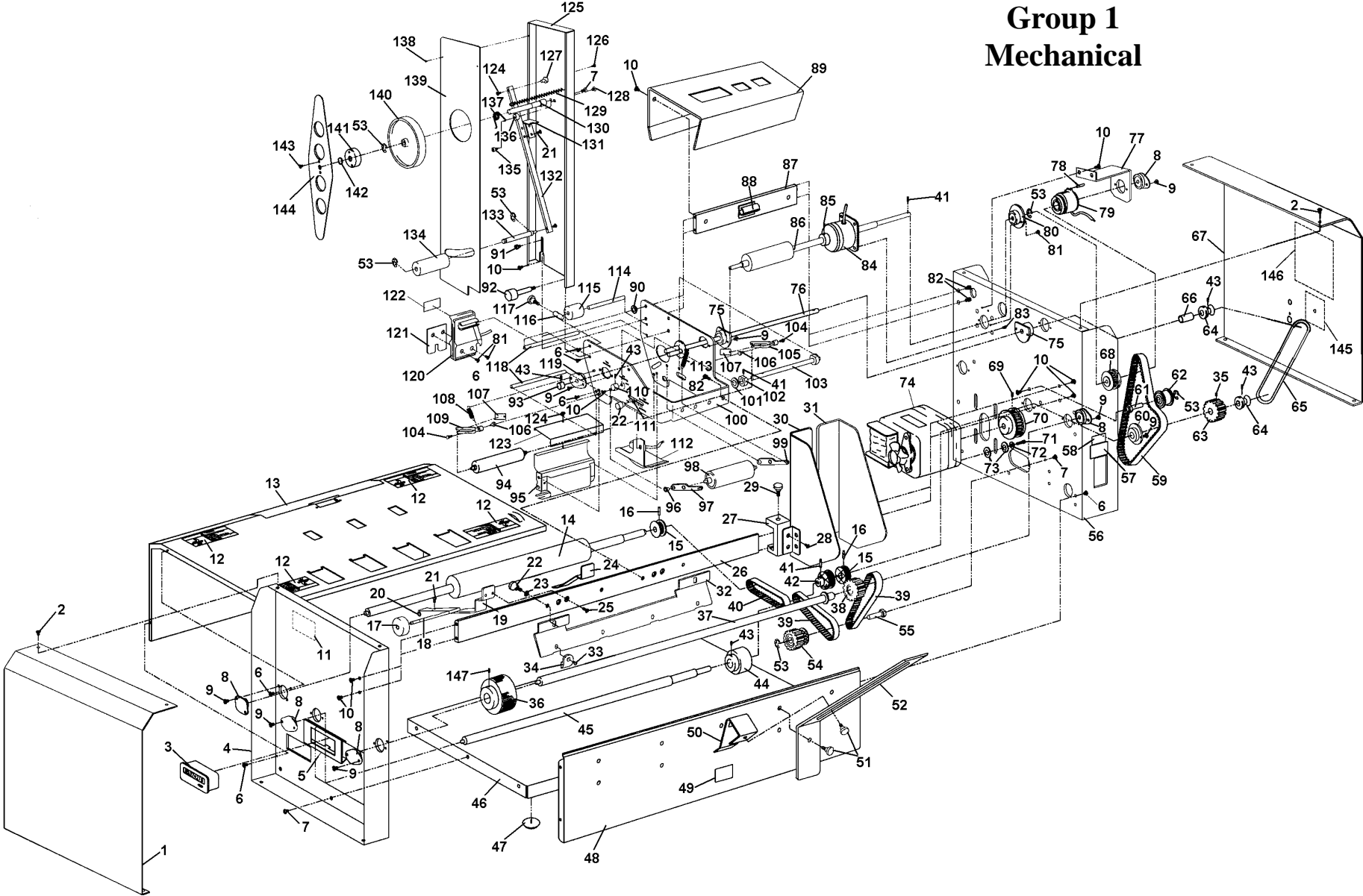
3/2016

Parts Manual
First Edition

Table of Contents

Group 1 – Mechanical.....	1
Group 2 – Electrical.....	4
Group 3 – Applicator Head.....	6
Group 4 – Reel Support.....	7
Group 5 – Labels.....	8
INDEX.....	9

Group 1 Mechanical



KEY	PART No.	DESCRIPTION	QTY.
1.	62E-200-06	SIDE COVER, L/H	1
2.	123-1135	SCREW, 6-32 x 1/4 TRUSS HD. PH. SS	8
3.	123-1035	COUNTER, NON-RESETTABLE	1
4.	62E-200-05	FRAME, L/H SIDE	1
5.	62-300-116	COUNTER BRACKET SPRING	1
6.	123-0612	SCREW, 6-32 x 1/4 PH PAN HD.	10
7.	123-0024	SCREW, 10-32 x 3/8 PH TRUSS HD	7
8.	90-103-52	BALL BEARING ASSEMBLY	6
9.	123-0275	SCREW, 6-32 x 1/4 OVAL CSK PH	18
10.	123-0017	SCREW, 10-32 x 1/4 PH TRUSS HD	13
11.	123-1527	DECAL, WARNING	1
12.	123-1112	DECAL, CAUTION EXPOSED ROLLER	4
13.	62-100-08	CENTER PLATE WELDMENT	1
14.	62-106-02	ROLLER, FRONT FEED	1
15.	71-122-06	PULLEY, 12 XL	2
16.	123-0036	ROLL PIN, 3/32 x 5/8	2
17.	62-100-37	ROLLER, RETAINER SPRING	4
18.	62-100-36	SHAFT, TRACK ROLLER	2
19.	62-100-32	RETAINER SPRING WELDMENT	2
20.	123-0080	TRUARC, #5133-18	8
21.	123-0461	SCREW, 6-32 x 3/16 PH RND HD SS	6
22.	62-312-10	KNOB ASSEMBLY, METERING BRACKET	3
23.	123-0148	WASHER, 7/16 OD x 0.200 ID x 1/32	2
24.	62-300-39	SPRING, RETAINER	1
25.	123-0002	SCREW, 10-32 x 3/8 PH UNDERCUT SS	4
26.	62-100-30	BEAM, REAR SUPPORT	1
27.	62-100-31	BLOCK, SIDE GUIDE	2
28.	123-0878	SCREW, 10-24 x 1/4 PH RND HD	4
29.	62-100-29	KNOB ASSEMBLY	2
30.	62-105-10	SIDE GUIDE ASSEMBLY- L/H	1
31.	62-105-11	SIDE GUIDE ASSEMBLY- R/H	1
32.	62-100-38	METERING BRACKET	1
33.	123-0683	SCREW, 6-32 x 5/16 PH UNDERCUT SS	5
34.	90-103-09	METERING SEGMENT	4
35.	123-0298	SET SCREW, 10-24 x 3/16 SOC PT	1
36.	90-102-21	FEED ROLLER ASSEMBLY	4
37.	62-102-01	REAR FEED SHAFT SUBASSEMBLY	1
38.	62-101-03	PULLEY, FEED ROLLER SHAFT ASSEMBLY	1
39.	123-0138	BELT, TIMING 90XL029U	2
40.	123-0576	BELT, 80XL031, BLACK	1
41.	123-0695	SPRING PIN, 3/32 x 1/2	4
42.	62-102-11	PULLEY, 14XL GROOVES	1
43.	123-0322	SET SCREW 8-32 x 1/4 SOC	8

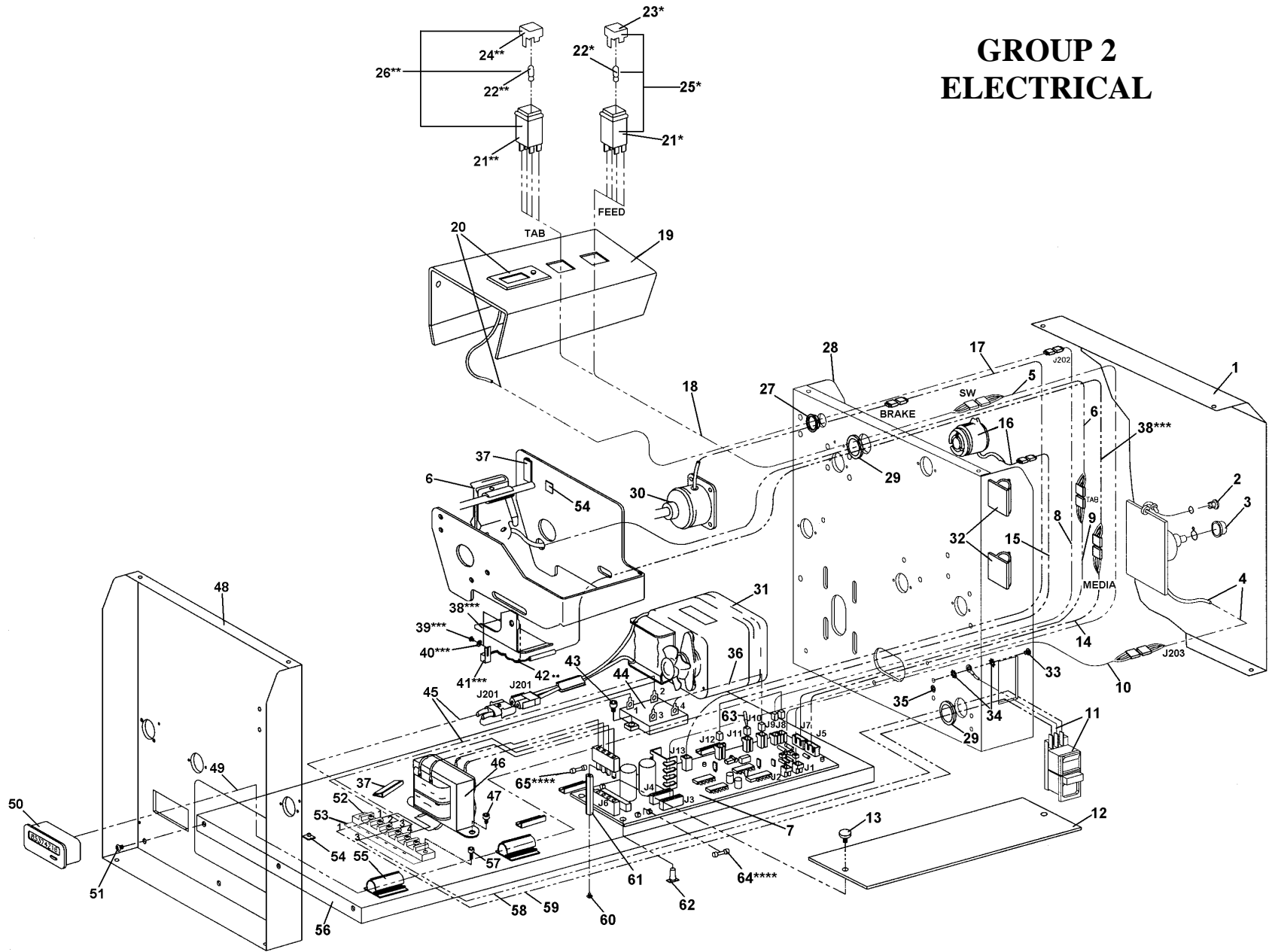
KEY	PART No.	DESCRIPTION	QTY.
44.	56-101-17	RUBBER FEED ROLLER ASSEMBLY (Repl. 56-101-02)	4
45.	62-102-08	DRIVE SHAFT	1
46.	62E-200-07	MOTOR BASE	1
47.	123-0620	FOOT, RUBBER	4
48.	62-100-10	REAR CLOSURE WELDMENT	1
49.	20-100-63	LABEL, CAUTION	1
50.	90-102-13	REAR MEDIA SUPPORT WELDMENT	2
51.	62-100-50	KNOB, METERING BRACKET	4
52.	62-110-01	PAPER STACK REST	2
53.	123-0081	TRUARC, #10000025ST	6
54.	90-107-05	IDLER PULLEY ASSEMBLY	1
55.	90-107-06	IDLER PULLEY STUD ASSEMBLY	1
56.	62E-200-04	FRAME, R/H SIDE	1
57.	27-550-03	LABEL, FUSE	1
58.	123-1890	DECAL, CAUTION WARNING LABEL	1
59.	123-0873	BELT, 160XL037 BLACK	1
60.	90-101-12	BEARING HOUSING ASSEMBLY, CLUTCH	1
61.	62-103-47	STUD, TENSIONER	1
62.	62-100-42	ROLLER ASSEMBLY, TENSIONER	1
63.	62-102-19	PULLEY, 20 XL GROOVES	1
64.	90-103-45	SPOOL, PAPER TAKE-UP	2
65.	123-0906	O-RING, 0.125 x 11.75	1
66.	62-109-05	SLEEVE	1
67.	62E-200-35	SIDE COVER, R/H	1
68.	62-103-13	CLUTCH COUPLING ASSEMBLY	1
69.	123-0709	SET SCREW, 10-24 x 3/8 CUP PT SOC	1
70.	62-100-43	MOTOR PULLEY, 26-TEETH	1
71.	123-0004	SCREW, 10-32 x 5/8 SOC HD	4
72.	123-0068	WASHER, PLAIN #10 3/16	4
73.	123-0311	WASHER, 9/32 x 3/4 x 1/16 PLASTIC	8
74.	62-500-15	MOTOR ASSEMBLY	1
75.	62-109-07A	HOUSING, BALL BEARING ASSEMBLY	2
76.	62-109-01	PAPER TAKE-UP SHAFT WELDMENT	1
77.	62-103-08	CLUTCH SHAFT SUPPORT	1
78.	123-0018	ROLL PIN 1/8 x 3/4 - BLACK	1
79.	62-800-14	CLUTCH ASSEMBLY	1
80.	62-100-46	BALL BEARING HOUSING ASSEMBLY	1
81.	123-0675	SCREW, 6-32 x 3/16 PH FH UNDERCUT SS	4
82.	123-0434	SCREW, 10-32 x 5/16 SOC CAP	4
83.	123-0876	SCREW, 1/4-28 x 1/4 SOC CAP HD	4
84.	62-800-13	BRAKE ASSEMBLY	1
85.	123-0757	SET SCREW, 6-32 x 1/4 STD CUP PT	1
86.	62-103-01	TAB PULL ROLLER ASSEMBLY	1

KEY	PART No.	DESCRIPTION	QTY.
87.	62-100-28	APPLICATOR HEAD SUPPORT	1
88.	123-0609	CABLE HOLDER, 1/4 IN	6
89.	62E-200-19	COVER, HEAD SUPPORT	1
90.	62-307-10	SPACER, REEL GUIDE	1
91.	123-0486	SCREW, 10-32 x 7/16 SOC CAP	1
92.	62-307-11	THUMBSCREW, REEL GUIDE	1
93.	62-312-07	KNOB, TAB ADVANCE	1
94.	62-108-08	ROLLER, APPLICATOR HEAD	1
95.	62-308-04	TAB SEPARATOR WELDMENT	1
96.	62-108-09	PIN	2
97.	90-103-34	ARM ASSEMBLY - L/H	1
98.	62-108-10	ROLLER, PRESSURE RELEASE	1
99.	90-103-35	ARM ASSEMBLY - R/H	1
100.	62E-208-01	APPLICATOR HEAD FRAME ASSEMBLY	1
101.	123-901	WASHER, #12 FLAT 1/4 x 9/16 x 0.062	2
102.	90-103-40	RELEASE - ECCENTRIC	2
103.	62-108-07	SHAFT, RELEASE ECCENTRIC	1
104.	123-0267	SCREW, 6-32 x 5/8 HEX HD SS	2
105.	62-108-19	HOLDER ASSY., APPLICATOR ROLLER - R/H	1
106.	62-308-11	STUD, APPLICATOR ROLLER	2
107.	62-308-32	SPRING, APPLICATOR ROLLER HOLDER	2
108.	62-108-18	SPRING	2
109.	62-108-20	HOLDER ASSY., APPLICATOR ROLLER - L/H	1
110.	62-312-04	KNOB, TAB PRESSURE ON/OFF	1
111.	123-0114	WASHER, PLASTIC 3/16 x 7/16 x 1/32	1
112.	62-800-22	MEDIA SENSOR BRACKET ASSEMBLY	1
113.	62-108-30	SPRING, PRESSURE ROLLER	2
114.	62-308-25	GUIDE ROD, APPLICATOR HEAD	1
115.	62-108-14	ROLLER, TAB GUIDE	1
116.	62-108-13	GUIDE, TAB	1

KEY	PART No.	DESCRIPTION	QTY.
117.	62-108-21	KNOB ASSEMBLY	1
118.	62-108-12	ROD, APPLICATOR HEAD	2
119.	90-102-28	HOUSING, BALL BEARING ASSEMBLY	1
120.	62-304-24U	TAB SENSOR SUBASSEMBLY	1
121.	62-108-15	SPRING, TAB GUIDE	1
122.	123-0702	LABEL, TAB ALIGNMENT	1
123.	62-308-30	SAFETY COVER, APPLICATOR HEAD	1
124.	123-0127	SCREW, 6-32 x 1/8 PH PAN HD	2
125.	62E-207-03	STAND, REEL	1
126.	123-0274	SCREW, 6-32 x 3/8 PH TRUSS HD	1
127.	62-307-07	PIVOT, REEL	1
128.	123-0701	SCREW, 10-32 x 3/16 PH TRUSS HD	1
129.	80-120-23	SPRING, REEL ARM	1
131.	62-307-23	LINK, REEL BRAKE SPRING	1
132.	62-307-02	ARM ASSEMBLY, REEL	1
133.	62-307-15	SHAFT, REEL GUIDE ROLLER	1
134.	90-106-11	GUIDE ROLLER	1
135.	123-1022	SCREW, 10-32 x 3/16 SOC HD	1
136.	62-307-06	SPACER, REEL	1
137.	90-106-07	TENSION SPRING	1
138.	123-0133	SCREW, 4-40 x 1/4 PH UNDERCUT	4
139.	62E-207-09	FACE PLATE, REEL	1
140.	90-106-05	BRAKE WHEEL ASSEMBLY	1
141.	90-106-14	HUB, REEL	1
142.	123-0673	O-RING, SEE P/N 123-0621	1
143.	123-0125	SCREW, 8-32 x 3/16 BIND HD PH	2
144.	62E-207-14	SIDE GUIDE, REEL	1
145.	35E-550-20	DECAL	1
146.	123-0703	DIAGRAM, LABEL THREADING (T)	1
147.	123-1861	SCREW, 10-24 x 1/4 SOC PT	4
*	62-100-54	DROP TRAY (OPTIONAL ACCESSORY)	1
*NOT SHOWN			

GROUP 1 MECHANICAL

GROUP 2 ELECTRICAL



KEY	PART No.	DESCRIPTION	QTY.
1.	62E-200-35	SIDE COVER, R/H	1
2.	123-0685	LED HOLDER	1
3.	62-312-16	KNOB ASSEMBLY, TAB SENSOR SWITCH	1
4.	62-800-02	SET-UP SWITCH ASSEMBLY	1
5.	62-800-16	WIRE HARNESS, SWITCHES, L/H	1
6.	62-304-24	TAB SENSOR ASSEMBLY, W350	1
7.	62-800-00	CONTROLLER PC BOARD	1
8.	62-800-09	WIRE HARNESS, COUNTER EXTENSION	1
9.	62-800-32	WIRE HARNESS, TAB SENSOR EXTENSION	1
10.	62-800-03	WIRE HARNESS, SET-UP SWITCH	1
11.	21-500-04	POWER INLET- GROUND	1
12.	62-300-60	SHIELD, PC BOARD	1
13.	62-300-61	KNOB ASSEMBLY, PC BOARD SHIELD	1
14.	62-800-31	WIRE HARNESS, MEDIA SENSOR EXT	1
15.	62-800-18	WIRE HARNESS, CLUTCH EXTENSION	1
16.	62-800-14	CLUTCH ASSEMBLY	1
17.	62-800-17	WIRE HARNESS, BRAKE EXTENSION	1
18.	62-800-15	WIRE HARNESS EXTENSION, SWITCHES	1
19.	62E-200-19	COVER, HEAD SUPPORT	1
20.	62-500-08	COUNTER ASSEMBLY	1
21.	123-0940	SWITCH	1
22.	123-0941	LIGHTBULB FOR SWITCH	1
23.	123-0930	CAP, GREEN	1
24.	123-0929	CAP, WHITE	1
25.*	62-800-28	SWITCH ASSEMBLY, FEED (GREEN)	1
26.**	62-800-29	SWITCH ASSEMBLY, TAB (WHITE)	1
27.	123-0684	SNAP-IN BUSHING, .500 O.D.	1
28.	62E-200-04	FRAME, R/H SIDE	1
29.	123-1984	GROMMET, RUBBER	2
30.	62-800-13	BRAKE ASSEMBLY	1
31.	62-500-15	MOTOR ASSEMBLY	1
32.	123-0608	CABLE HOLDER, 1/2 IN	2
33.	123-0017	SCREW, 10-32 x 1/4 PH TRUSS HD	1

KEY	PART No.	DESCRIPTION	QTY.
34.	123-0237	STAR WASHER, #10 EXTERNAL	2
35.	123-1132	LABEL, GROUND MACHINE	1
36.	62-800-19	WIRE HARNESS, RELAY	1
37.	123-0607	CLAMP, FLAT CABLE	3
38.***	62-800-22	MEDIA SENSOR BRACKET ASSEMBLY	1
39.	123-0978	SCREW, 4-40 x 3/16 PH PAN HD SS	1
40.	123-0252	STAR WASHER, #6 EXTERNAL	1
41.	62-800-12	WIRE HARNESS, MEDIA SENSOR	1
42.	123-0113	TIES, PLASTIC	1
43.	123-0778	SCREW, 8-32 x 3/8 SOC HD	2
44.	123-0831	AC RELAY, SOLID STATE	1
45.	62-800-04	WIRE HARNESS, MOTOR	1
46.	62-800-01	TRANSFORMER ASSEMBLY	1
47.	123-0434	SCREW, 10-32 x5 /16 SOC CAP	2
48.	62E-200-05	FRAME, L/H SIDE	1
49.	62-800-34	WIRE HARNESS, NONRESETTABLE COUNTER	1
50.	123-1035	COUNTER, NONRESETTABLE	1
51.	123-0024	SCREW, 10-32 x 3/8 PH TRUSS HD	6
52.	63-500-26	TERMINAL BLOCK ASSEMBLY	1
53.	25-550-04	DECAL, TERMINAL BLOCK	1
54.	123-0945	CABLE TIE MOUNT	2
55.	123-0609	CABLE HOLDER, 1/4 IN	6
56.	62E-200-07	MOTOR BASE	1
57.	123-1457	SCREW, 6-32x3/8 SOC CAP	2
58.	62-250-04	WIRE HARNESS, TB/ PWR SUP	1
59.	62-250-05	WIRE HARNESS, TB/ PWR SUP	1
60.	123-0612	SCREW, 6-32 x 1/4 PHILLIPS PAN HD.	2
61.	62-300-62	STUD, PC BOARD SHIELD	2
62.	123-0426	SUPPORT, CIRCUIT BOARD	4
63.	62-250-06	WIRE HARNESS, JUMPER	1
64.****	123-0987	FUSE, 1A 250V 5 x 20mm #217001	1
65.****	123-0871	FUSE, 1/2A 5 x 20mm	1

* INCLUDES KEY 21, 22 AND 23

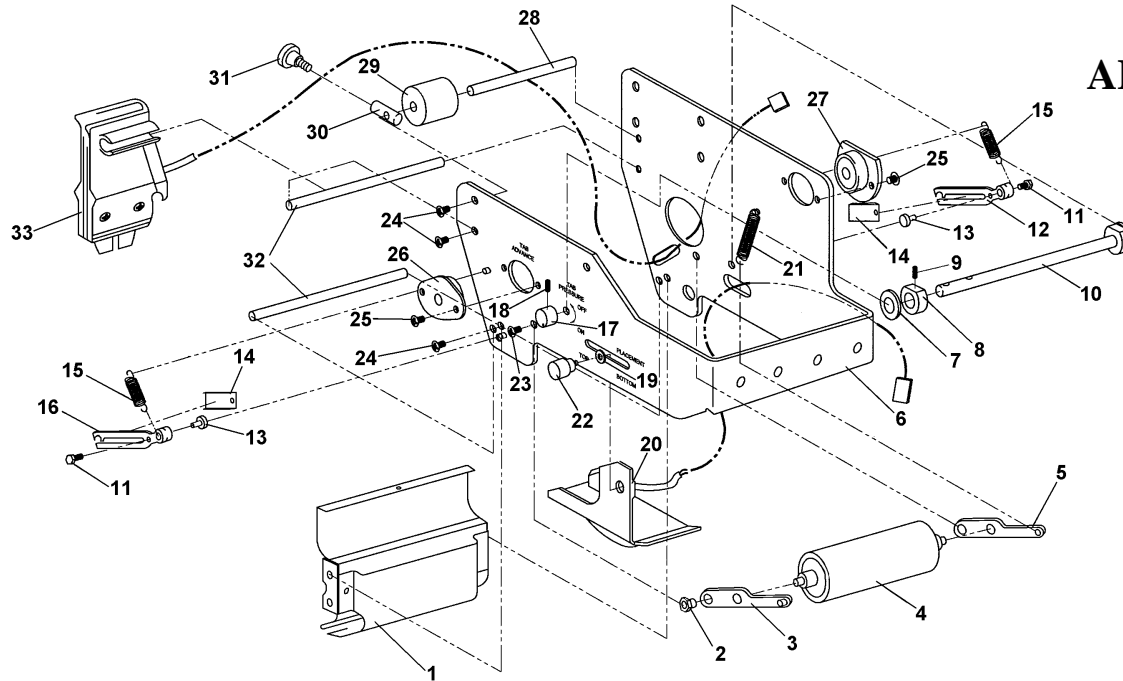
** INCLUDES KEY 21, 22 AND 24

*** INCLUDES KEY 39, 40 41 AND 42

****INCLUDED WITH P/N 62-800-00

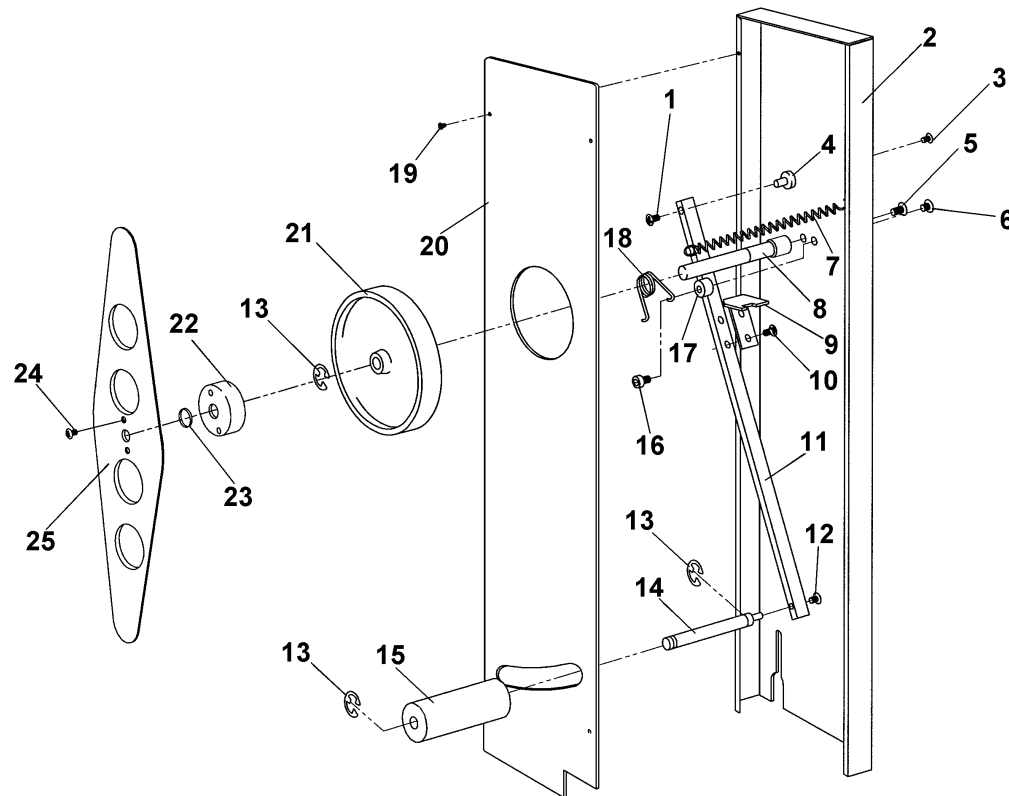
GROUP 2 ELECTRICAL

GROUP 3 APPLICATOR HEAD

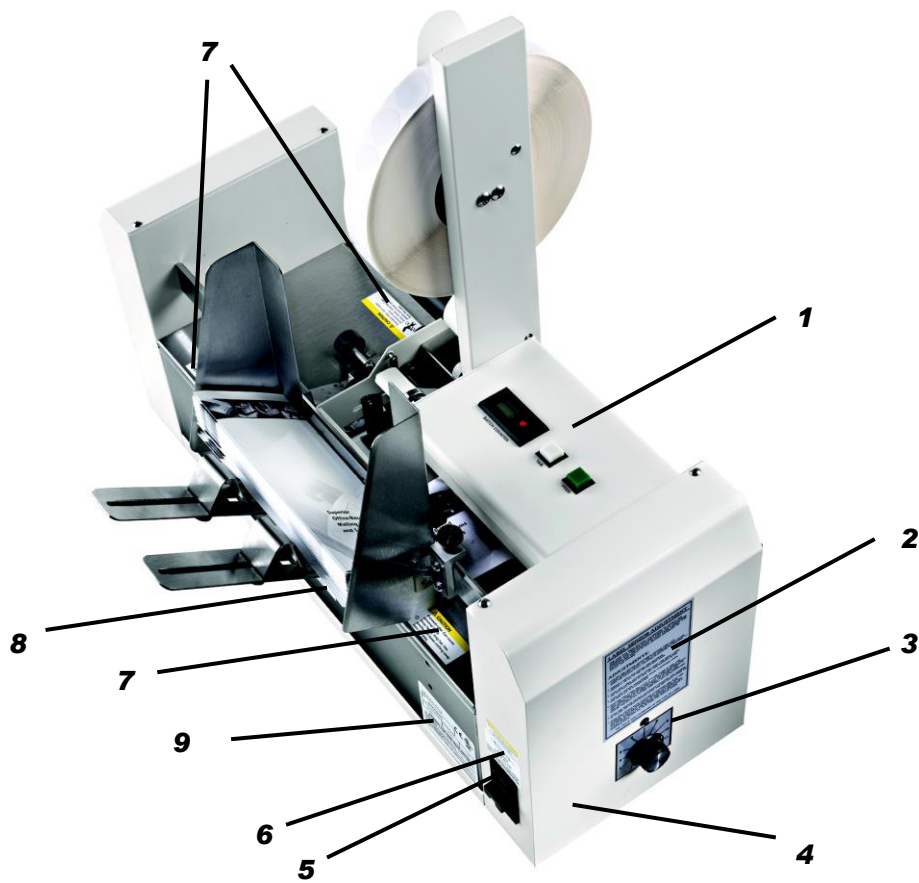


KEY PART No.	DESCRIPTION	QTY.	KEY PART No.	DESCRIPTION	QTY.		
1.	62-308-04	TAB SEPARATOR WELDMENT	1	18.	123-0322	SET SCREW, 8-32 x 1/4 SOC	1
2.	62-108-09	PIN	2	19.	123-0114	WASHER, PLASTIC 3/16 x 7/16 x 1/32	1
3.	90-103-34	ARM ASSEMBLY - L/H	1	20.	62-800-22	MEDIA SENSOR BRACKET ASSEMBLY	1
4.	62-108-10	ROLLER, PRESSURE RELEASE	1	21.	62-108-30	SPRING, PRESSURE ROLLER	2
5.	90-103-35	ARM ASSEMBLY - R/H	1	22.	62-312-10	KNOB ASSEMBLY, METERING BRACKET	1
6.	62E-208-01	APPLICATOR HEAD FRAME ASSEMBLY	1	23.	123-0017	SCREW, 10-32 x 1/4 PH TRUSS HD	2
7.	123-0901	WASHER, #12 FLAT 1/4 x 9/16 x 0.062	2	24.	123-0612	SCREW, 6-32 x 1/4 PHILLIPS PAN HD.	8
8.	90-103-40	RELEASE - ECCENTRIC	2	25.	123-0275	SCREW, 6-32 x 1/4 OVAL CSK PH	4
9.	123-0695	SPRING PIN, 3/32 x 1/2	2	26.	90-102-28	HOUSING, BALL BEARING ASSEMBLY	1
10.	62-108-07	SHAFT, RELEASE ECCENTRIC	1	27.	62-109-07A	HOUSING, BALL BEARING ASSEMBLY	1
11.	123-0267	SCREW, 6-32 x 5/8 HEX HD SS	2	28.	62-308-25	GUIDE ROD, APPLICATOR HEAD	1
12.	62-108-19	HOLDER ASSY., APPLICATOR ROLLER - R/H	1	29.	62-108-14	ROLLER, TAB GUIDE	1
13.	62-308-11	STUD, APPLICATOR ROLLER	2	30.	62-108-13	GUIDE, TAB	1
14.	62-308-32	SPRING, APPLICATOR ROLLER HOLDER	2	31.	62-108-21	KNOB ASSEMBLY	1
15.	62-108-18	SPRING	2	32.	62-108-12	ROD, APPLICATOR HEAD	2
16.	62-108-20	HOLDER ASSY., APPLICATOR ROLLER - L/H	1	33.	62-304-24	TAB SENSOR ASSEMBLY	1
17.	62-312-04	KNOB, TAB PRESSURE ON/OFF	1				

GROUP 4 REEL SUPPORT



KEY PART No.	DESCRIPTION	QTY.	KEY PART No.	DESCRIPTION	QTY.
1.	123-0127 SCREW, 6-32 x 1/8 PH PAN HD	1	14.	62-307-15 SHAFT, REEL GUIDE ROLLER	1
2.	62E-207-03 STAND, REEL	1	15.	90-106-11 GUIDE ROLLER	1
3.	123-0274 SCREW, 6-32 x 3/8 PH TRUSS HD	1	16.	123-1022 SCREW, 10-32 x 3/16 SOC HD	1
4.	62-307-07 PIVOT, REEL	1	17.	62-307-06 SPACER, REEL	1
5.	123-0024 SCREW, 10-32 x 3/8 PH TRUSS HD	1	18.	90-106-07 TENSION SPRING	1
6.	123-0701 SCREW, 10-32 x 3/16 PH TRUSS HD	1	19.	123-0133 SCREW, 4-40 x 1/4 PH UNDERCUT	4
7.	80-120-23 SPRING, REEL ARM	1	20.	62E-207-09 FACE PLATE, REEL	1
8.	62-307-05 STUD, SPOOL SUPPORT	1	21.	90-106-05 BRAKE WHEEL ASSEMBLY	1
9.	62-307-23 LINK, REEL BRAKE SPRING	1	22.	90-106-14 HUB, REEL	1
10.	123-0461 SCREW, 6-32 x 3/16 PH RND HD SS	2	23.	123-0621 O-RING	1
11.	62-307-02 ARM ASSEMBLY, REEL	1	24.	123-0125 SCREW, 8-32 x 3/16 BIND HD PH	2
12.	123-0683 SCREW, 6-32 x 5/16 PH UNDERCUT SS	1	25.	62E-207-14 SIDE GUIDE, REEL	1
13.	123-0081 TRUARC, #10000025ST	3			



KEY	PARTNo.	DESCRIPTION	QTY	KEY	PART No.	DESCRIPTION	QTY
1.	62E-550-10	DECAL FD 262	1	6.	123-1890	DECAL, CAUTION POWER DISCONNECT	1
2.	123-0703	DIAGRAM, LABEL THREADING (T)	1	7.	123-1112	LABEL, CAUTION EXPOSED ROLLER	4
3.	35E-550-20	DECAL	1	8.	20-100-63	DECAL, CAUTION	1
4.	62E-550-15	FORMAX LOGO	1	9.	NPN	SERIAL NUMBER LABEL	1
5.	27-550-03	DECAL, FUSE 2.0 A	1				

GROUP 5 - LABELS

INDEX

PART NO.	GROUP	KEY	PART NO.	GROUP	KEY
123-0002	1	25	123-0620	1	47
123-0004	1	71	123-0673	1	142
123-0017	1	10	123-0673	4	23
123-0017	2	33	123-0675	1	81
123-0017	3	23	123-0683	1	33
123-0018	1	78	123-0683	4	12
123-0024	1	7	123-0684	2	27
123-0024	2	51	123-0685	2	2
123-0024	4	5	123-0695	1	41
123-0036	1	16	123-0695	3	9
123-0068	1	72	123-0701	1	128
123-0080	1	20	123-0701	4	6
123-0081	1	53	123-0702	1	122
123-0081	4	13	123-0703	1	146
123-0113	2	42	123-0703	5	2
123-0114	1	111	123-0709	1	69
123-0114	3	19	123-0757	1	85
123-0125	1	143	123-0778	2	43
123-0125	4	24	123-0831	2	44
123-0127	1	124	123-0871	2	65
123-0127	4	1	123-0873	1	59
123-0133	1	138	123-0876	1	83
123-0133	4	19	123-0878	1	28
123-0138	1	39	123-0901	3	7
123-0148	1	23	123-0906	1	65
123-0237	2	34	123-0929	2	24
123-0252	2	40	123-0930	2	23
123-0267	1	104	123-0940	2	21
123-0267	3	11	123-0941	2	22
123-0274	1	126	123-0945	2	54
123-0274	4	3	123-0978	2	39
123-0275	1	9	123-0987	2	64
123-0275	3	25	123-1022	1	135
123-0298	1	35	123-1022	4	16
123-0311	1	73	123-1035	1	3
123-0322	1	43	123-1035	2	50
123-0322	3	18	123-1112	1	12
123-0426	2	62	123-1112	5	7
123-0434	1	82	123-1132	2	35
123-0434	2	47	123-1135	1	2
123-0461	1	21	123-1457	2	57
123-0461	4	10	123-1527	1	11
123-0486	1	91	123-1527	5	9
123-0576	1	40	123-1861	1	147
123-0607	2	37	123-1890	1	58
123-0608	2	32	123-1890	5	6
123-0609	1	88	123-1984	2	29
123-0609	2	55	123-901	1	101
123-0612	1	6	20-100-63	1	49
123-0612	2	60	20-100-63	5	8
123-0612	3	24	21-500-04	2	11

INDEX

PART NO.	GROUP	KEY	PART NO.	GROUP	KEY
25-550-04	2	53	62-108-20	1	109
27-550-03	1	57	62-108-20	3	16
27-550-03	5	5	62-108-21	1	117
35E-550-20	1	145	62-108-21	3	31
35E-550-20	5	3	62-108-30	1	113
56-101-17	1	44	62-108-30	3	21
62-100-08	1	13	62-109-01	1	76
62-100-10	1	48	62-109-05	1	66
62-100-28	1	87	62-109-07A	1	75
62-100-29	1	29	62-109-07A	3	27
62-100-30	1	26	62-110-01	1	52
62-100-31	1	27	62-250-04	2	58
62-100-32	1	19	62-250-05	2	59
62-100-36	1	18	62-250-06	2	63
62-100-37	1	17	62-300-116	1	5
62-100-38	1	32	62-300-39	1	24
62-100-42	1	62	62-300-60	2	12
62-100-43	1	70	62-300-61	2	13
62-100-46	1	80	62-300-62	2	61
62-100-50	1	51	62-304-24	2	6
62-100-54	1	--	62-304-24	3	33
62-101-03	1	38	62-304-24U	1	120
62-102-01	1	37	62-307-02	1	132
62-102-08	1	45	62-307-02	4	11
62-102-11	1	42	62-307-05	4	8
62-102-19	1	63	62-307-06	1	136
62-103-01	1	86	62-307-06	4	17
62-103-08	1	77	62-307-07	1	127
62-103-13	1	68	62-307-07	4	4
62-103-47	1	61	62-307-10	1	90
62-105-10	1	30	62-307-11	1	92
62-105-11	1	31	62-307-15	1	133
62-106-02	1	14	62-307-15	4	14
62-108-07	1	103	62-307-23	1	131
62-108-07	3	10	62-307-23	4	9
62-108-08	1	94	62-308-04	1	95
62-108-09	1	96	62-308-04	3	1
62-108-09	3	2	62-308-11	1	106
62-108-10	1	98	62-308-11	3	13
62-108-10	3	4	62-308-25	1	114
62-108-12	1	118	62-308-25	3	28
62-108-12	3	32	62-308-30	1	123
62-108-13	1	116	62-308-32	1	107
62-108-13	3	30	62-308-32	3	14
62-108-14	1	115	62-312-04	1	110
62-108-14	3	29	62-312-04	3	17
62-108-15	1	121	62-312-07	1	93
62-108-18	1	108	62-312-10	1	22
62-108-18	3	15	62-312-10	3	22
62-108-19	1	105	62-312-16	2	3
62-108-19	3	12	62-500-08	2	20

INDEX

PART NO.	GROUP	KEY	PART NO.	GROUP	KEY
62-500-15	1	74	90-101-12	1	60
62-500-15	2	31	90-102-13	1	50
62-800-00	2	7	90-102-21	1	36
62-800-01	2	46	90-102-28	1	119
62-800-02	2	4	90-102-28	3	26
62-800-03	2	10	90-103-09	1	34
62-800-04	2	45	90-103-34	1	97
62-800-09	2	8	90-103-34	3	3
62-800-12	2	41	90-103-35	1	99
62-800-13	1	84	90-103-35	3	5
62-800-13	2	30	90-103-40	1	102
62-800-14	1	79	90-103-40	3	8
62-800-14	2	16	90-103-45	1	64
62-800-15	2	18	90-103-52	1	8
62-800-16	2	5	90-106-05	1	140
62-800-17	2	17	90-106-05	4	21
62-800-18	2	15	90-106-07	1	137
62-800-19	2	36	90-106-07	4	18
62-800-22	1	112	90-106-11	1	134
62-800-22	2	38	90-106-11	4	15
62-800-22	3	20	90-106-14	1	141
62-800-28	2	25	90-106-14	4	22
62-800-29	2	26	90-107-05	1	54
62-800-31	2	14	90-107-06	1	55
62-800-32	2	9	NPN	5	9
62-800-34	2	49			
62E-200-04	1	56			
62E-200-04	2	28			
62E-200-05	1	4			
62E-200-05	2	48			
62E-200-06	1	1			
62E-200-07	1	46			
62E-200-07	2	56			
62E-200-19	1	89			
62E-200-19	2	19			
62E-200-35	1	67			
62E-200-35	2	1			
62E-207-03	1	125			
62E-207-03	4	2			
62E-207-09	1	139			
62E-207-09	4	20			
62E-207-14	1	144			
62E-207-14	4	25			
62E-208-01	1	100			
62E-208-01	3	6			
62E-550-10	5	1			
62E-550-15	5	4			
63-500-26	2	52			
71-122-06	1	15			
80-120-23	1	129			
80-120-23	4	7			

