

# FORMAX<sup>®</sup>

---

FD 282  
Double-Head Edge Tabbing System

3/2016

Parts Manual  
First Edition



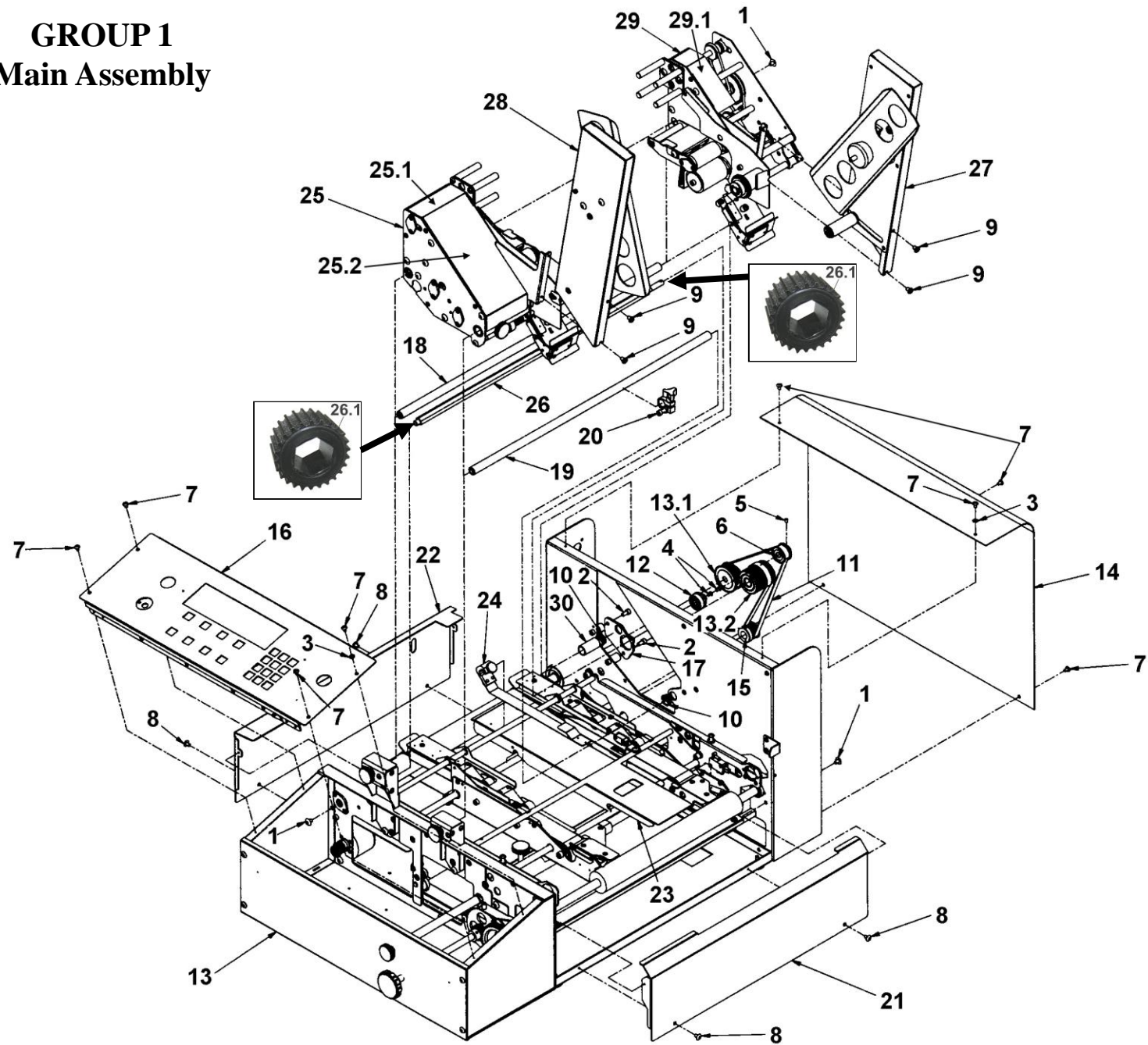
# Table of Contents

<b>GROUP 1 – Main Assembly</b>	<b>1</b>
<b>GROUP 2 – Frame Assembly</b>	<b>3</b>
<b>GROUP 3 – Raise Mechanism</b>	<b>5</b>
<b>GROUP 4 – Guides and Belts</b>	<b>7</b>
<b>GROUP 5A – Electrical</b>	<b>9</b>
<b>GROUP 5B – Electrical, Point-to-Point Wiring</b>	<b>11</b>
<b>GROUP 6 – Head 1 Right-Hand Head Assembly</b>	<b>14</b>
<b>GROUP 7 – Head 1 Reel Assembly</b>	<b>16</b>
<b>GROUP 8 – Head 2 Left-Hand Head Assembly</b>	<b>18</b>
<b>GROUP 9 – Head 2 Reel Assembly</b>	<b>20</b>
<b>GROUP 10 – Eccentric Shafts and Handle Shaft</b>	<b>22</b>
<b>GROUP 11 – Front and Rear Bridge</b>	<b>24</b>
<b>GROUP 12 – Registration Devices</b>	<b>26</b>
<b>GROUP 13 – Applicator Head</b>	<b>28</b>
<b>GROUP 14 – Side Guide Bracket Assembly</b>	<b>30</b>
<b>GROUP 15 – Rear Guide Bracket Rear</b>	<b>32</b>
<b>GROUP 16 – Narrow Media Guide Assembly</b>	<b>34</b>
<b>GROUP 17 – Labels</b>	<b>35</b>
<b>INDEX</b>	<b>37</b>

**NOTE: Key Numbers that have a dot and then a second number are part of the higher assembly. Ex: Key 13.2 would be part of Key 13 in a parts listing.**

# GROUP 1

## Main Assembly

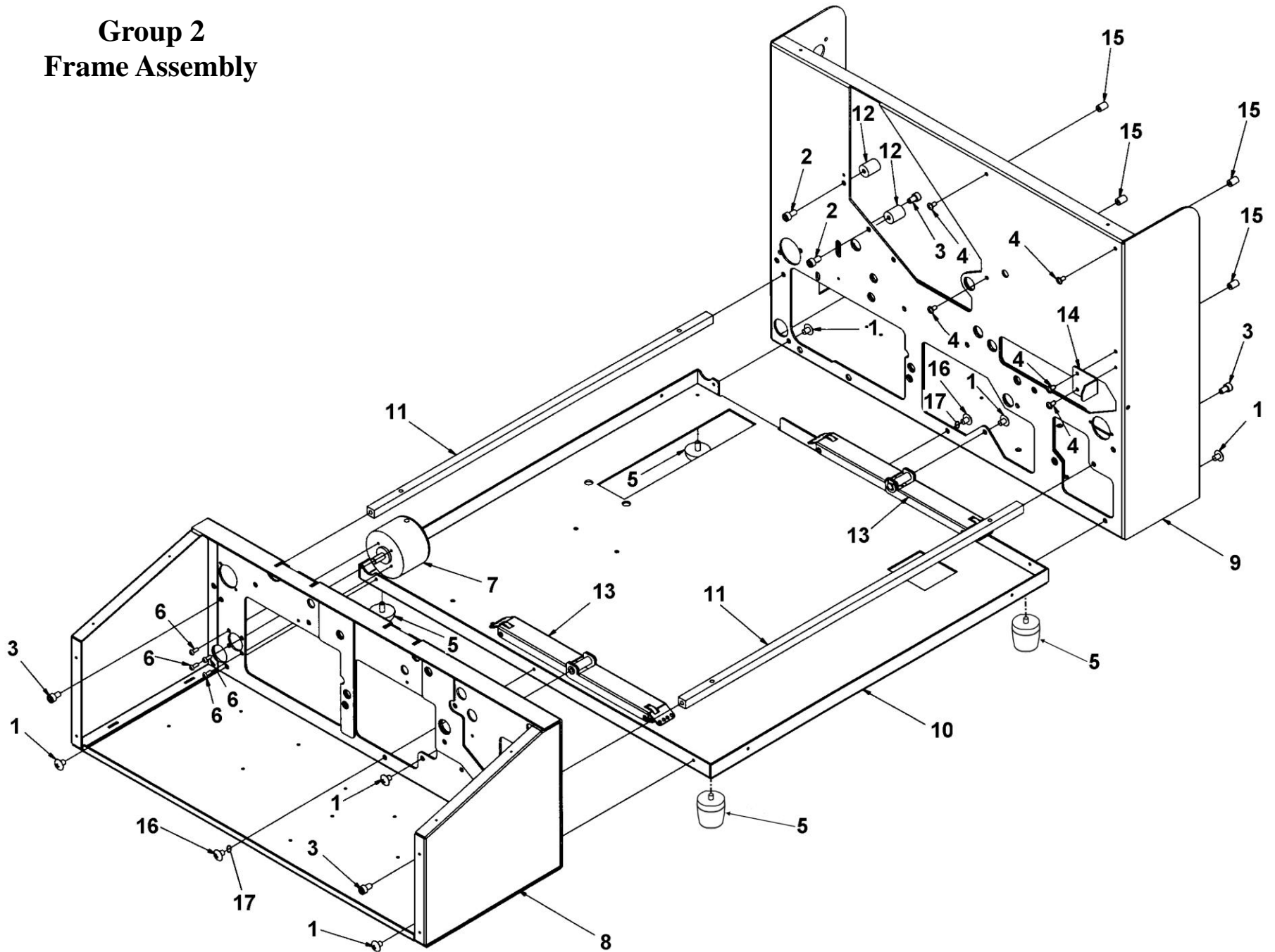


## GROUP 1 Main Assembly

KEY	PART NO.	DESCRIPTION	QTY
1.	123-0017	SCREW, 10-32 x 1/4 TRUSS HD PH SS	5
2.	123-0185	SCREW, 10-32 x 3/8 SOC HD CAP, BLACK	2
3.	123-0252	LOCK WASHER, #6 EXTERNAL TOOTH	2
4.	123-0275	SCREW, 6-32 x 1/4 OVAL CSK HD PH SS	2
5.	123-0322	SET SCREW, 8-32 x 1/4 HEX SOC, CUP PT	1
6.	123-0990	PULLEY, 14XL037 - 0.891 x 0.563 x 1/4 BORE	1
7.	123-1135	SCREW, 6-32 x 1/4 TRUSS HD PH SS	8
8.	123-1136	SCREW, 8-32 x 1/4 TRUSS HD PH SS	4
9.	123-1206	SCREW, 10-32 x 1/4 BTN HD SOC CAP SS, BLK	4
10.	123-1790	BEARING, SNAP-IN 1/2"	2
11.	123-2368	BELT, TIMING, 2800 XL037 DOUBLE	1
12.	29-103-09	BALL BEARING HOUSING ASSEMBLY	1
13.		FRONT SIDE FRAME ASSEMBLY (SEE GROUPS 2, 3, 4)	1
13.1.	123-1160	PULLEY, 24XL037 5/16 BORE	1
13.2.	41-101-11	DOUBLE PULLEY ASSEMBLY	1
14.	41E-100-16	COVER, REAR SIDE FRAME	1
15.	65-303-01	MOTOR PULLEY ASSEMBLY, 14 GROOVES	1

KEY	PART NO.	DESCRIPTION	QTY
16.	41E-100-30	CONTROL PANEL WELDMENT	1
17.	41-102-16	REAR HEAD HOLDER BRACKET	1
18.	41-102-20	REAR HEAD BAR	1
19.	41-102-21	REAR HEAD BAR	1
20.	41-102-26	HEAD STOPPER BODY ASSEMBLY	1
21.	41E-105-07	CLOSURE, EXIT	1
22.	41-105-08	CLOSURE, ENTRANCE	1
23.	41-105-09	CRASH TAB SUPPORT ASSEMBLY	1
23.	41-105-39	NARROW MEDIA SUPPORT ASSEMBLY (SEE GROUP 16)	1
24.	41-105-22	RETAINER SPRING ASSEMBLY	1
25.	41E-110-02	RIGHT HAND HEAD FRONT ASSEMBLY (HEAD 1) (SEE GROUP 6)	1
25.1	41E-110-14	RIGHT HAND HEAD COVER, REAR	
25.2	41E-110-15	RIGHT HAND HEAD COVER, TOP	
26.	41-110-17	HEAD DRIVE SHAFT	1
26.1	41-110-08	HEAD DRIVE PULLEY ASSEMBLY	2
27.	41-114-03	REEL, LEFT HAND ASSEMBLY (SEE GROUP 9)	1
28.	41-114-23	REEL, RIGHT HAND ASSEMBLY (SEE GROUP 7)	1
29.	41-120-02	LEFT HAND HEAD FRONT ASSEMBLY (HEAD 2) (SEE GROUP 8)	1
29.1	41E-120-15	LEFT HAND HEAD COVER, TOP	
30.	41-102-31	HEAD 2 STOPPER	1

# Group 2 Frame Assembly



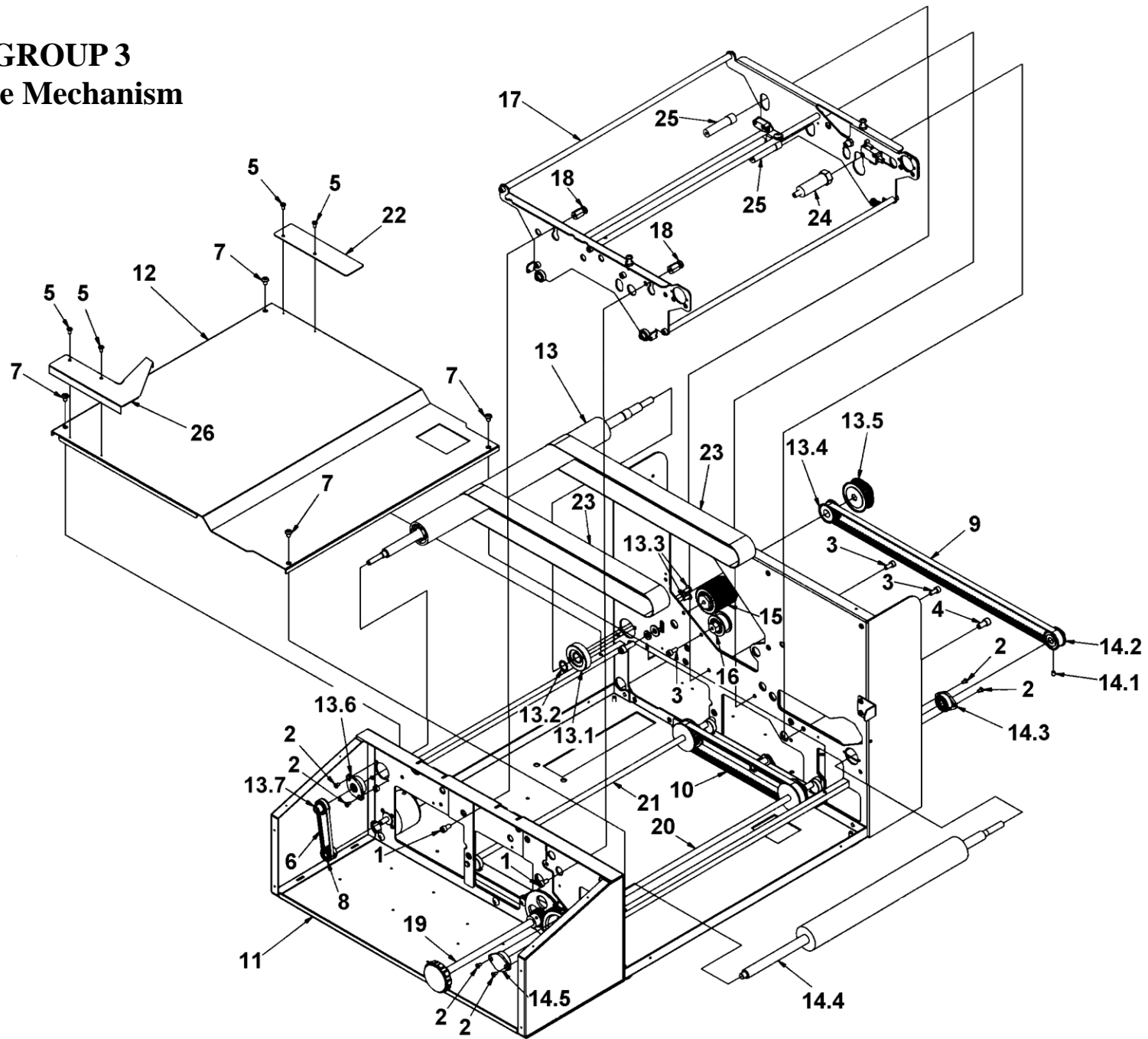
## GROUP 2

### Frame Assembly

KEY	PART NO.	DESCRIPTION	QTY
1.	123-0017	SCREW, 10-32 x 1/4 TRUSS HD PH SS	6
2.	123-0185	SCREW, 10-32 x 3/8 SOC HD CAP BLACK	2
3.	123-0434	SCREW, 10-32 x 5/16 SOC HD CAP	4
4.	123-0612	SCREW, 6-32 x 1/4 PAN HD SS	5
5.	35E-117-04	FOOT ASSEMBLY, RUBBER	4
6.	123-1023	SCREW, 4-40 x 5/16 RND HD PH SS	4
7.	33-500-135	ENCODER ASSEMBLY	1
8.	41E-100-04	FRONT SIDE FRAME WELDMENT	1
9.	41E-100-06	REAR SIDE FRAME WELDMENT	1
10.	41E-100-22	MOTOR BASE	1
11.	41-102-14	DIVIDER CROSS BAR	2
12.	41-102-17	HEAD HOLDER STUD	2
13.	41-103-13	SPRING ARM ASSEMBLY	2
14.	41-106-29	APPLICATOR HEAD STOPPER	1
15.	95-100-32	SUPPORT, PC BOARD	4
16.	123-0024	SCREW, 10-32 x 3/8 PH TRUSS MS	2
17.	123-0237	STAR WASHER, #10 EXTERNAL	2

# GROUP 3

## Raise Mechanism



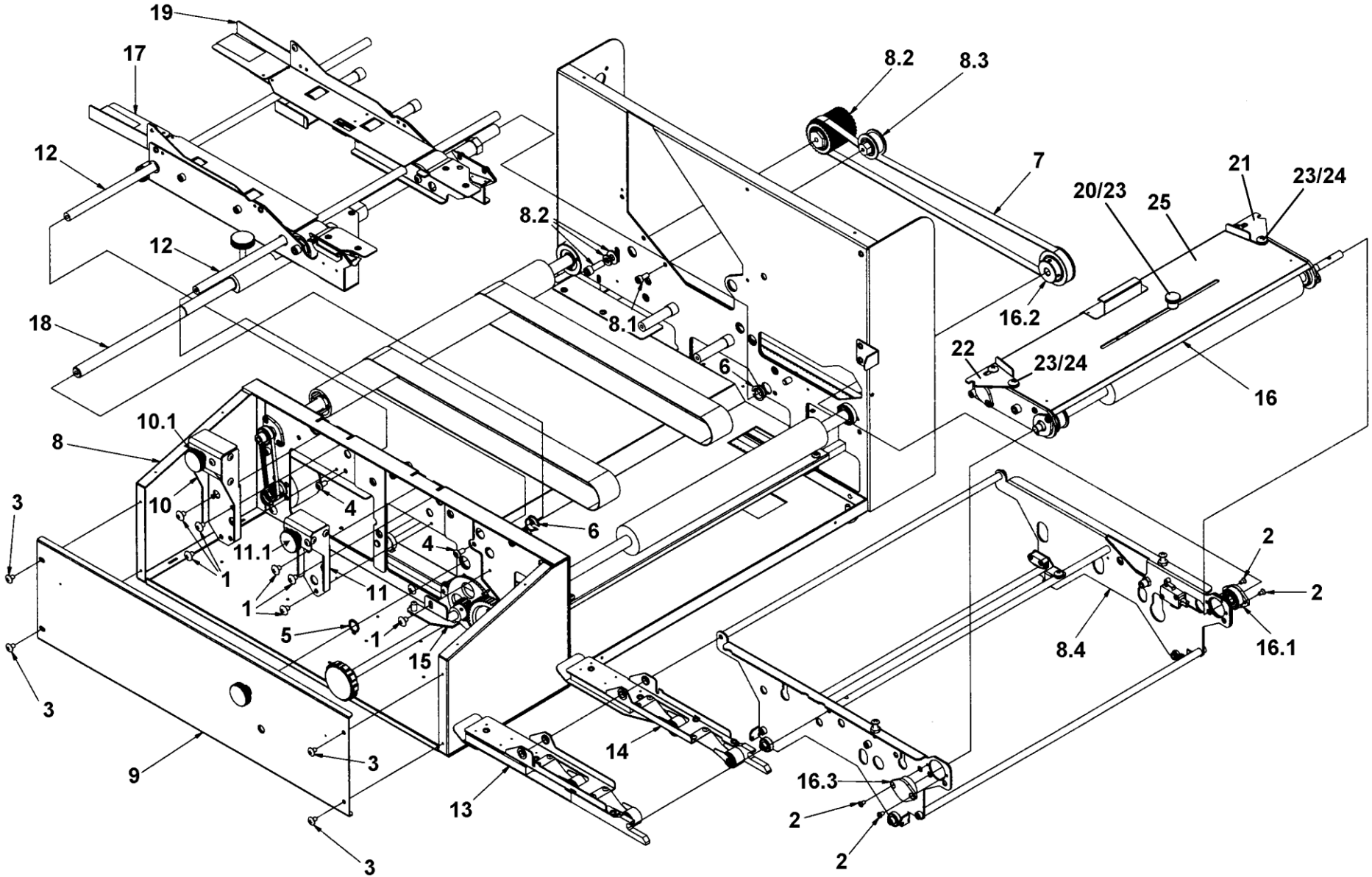


## GROUP 03

### Raise Mechanism

KEY	PART NO.	DESCRIPTION	QTY
1.	123-0185	SCREW, 10-32 x 3/8 SOC HD CAP BLACK	2
2.	123-0275	SCREW, 6-32 x 1/4 OVAL CSK HD PH SS	6
3.	123-0486	SCREW, 10-32 x 7/16 SOC HD CAP	3
4.	123-0524	SCREW, 1/4-20 x 1/2 SOC HD CAP	1
5.	123-0612	SCREW, 6-32 x 1/4 PAN HD SS	4
6.	123-0984	BELT, TIMING 40 DP, 94GR, 0.188	1
7.	123-1206	SCREW, 10-32 x 1/4 BTN HD SOC CAP SS, BLACK	4
8.	123-2102	PULLEY, TIMING BELT 40 DP, 22 GROOVES, W/#8-32 SET SCREW	1
9.	123-2367	BELT, TIMING 362XL037	1
10.	123-2370	BELT, TIMING 200XL037	1
11.	41E-100-04	FRONT SIDE FRAME WELDMENT ( <i>SEE GROUP 2</i> )	1
12.	41-100-25	DIVIDER	1
13.	41-101-05	DRIVE ROLLER SUBASSEMBLY	1
13.1.	35-101-14	HOUSING ASSEMBLY, SMALL 0.075	1
13.2.	123-1650	RETAINING RING, EXTERNAL, 1/2 x 0.468 x 0.039	1
13.3.	123-0733	SCREW, 8-32 x 3/8 TRUSS HD PH SS	2
13.4.	41-106-35	PULLEY, 14XL EXIT ROLLER	1
13.5.	123-1160	PULLEY, 24XL037 5/16 BORE	1
13.6.	29-103-09	BALL BEARING HOUSING ASSEMBLY	1
13.7.	123-2103	PULLEY, TIMING BELT 40DP, 24 GROOVE	1
14.1.	123-0322	SET SCREW, 8-32 x 1/4, HEXAGON SOCKET, CUP POINT	1
14.2.	123-0990	PULLEY, 14XL037 - 0.891 x 0.563W x 1/4 BORE W/FLANGES	1
14.3.	29-103-09	BALL BEARING HOUSING ASSEMBLY	1
14.4.	41-101-08	EXIT ROLLER, BOTTOM	1
14.5.	99-100-98	BALL BEARING HOUSING ASSEMBLY	1
15.	41-101-11	DOUBLE PULLEY ASSEMBLY	1
16.	41-101-22	TENSIONER ASSEMBLY	1
17.		FRONT AND REAR BRIDGE ASSEMBLY ( <i>SEE GROUP 11</i> )	1
18.	41-103-12	FRONT BRIDGE GUIDE	2
19.	41-104-03	HANDLE SHAFT ASSEMBLY ( <i>SEE GROUP 10</i> )	1
20.	41-104-10	ECCENTRIC SHAFT, RIGHT HAND ASSEMBLY ( <i>SEE GROUP 10</i> )	1
21.	41-104-13	ECCENTRIC SHAFT, LEFT HAND ASSEMBLY ( <i>SEE GROUP 10</i> )	1
22.	41-105-31	CLOSURE, REAR	1
23.	41-107-33	TRANSPORT BELT	2
24.	41-108-17	BELT SUPPORT STUD #4 ASSEMBLY	1
25.	41-108-20	BELT SUPPORT STUD #3 ASSEMBLY	2
26.	41-105-32	CLOSURE, FRONT	1

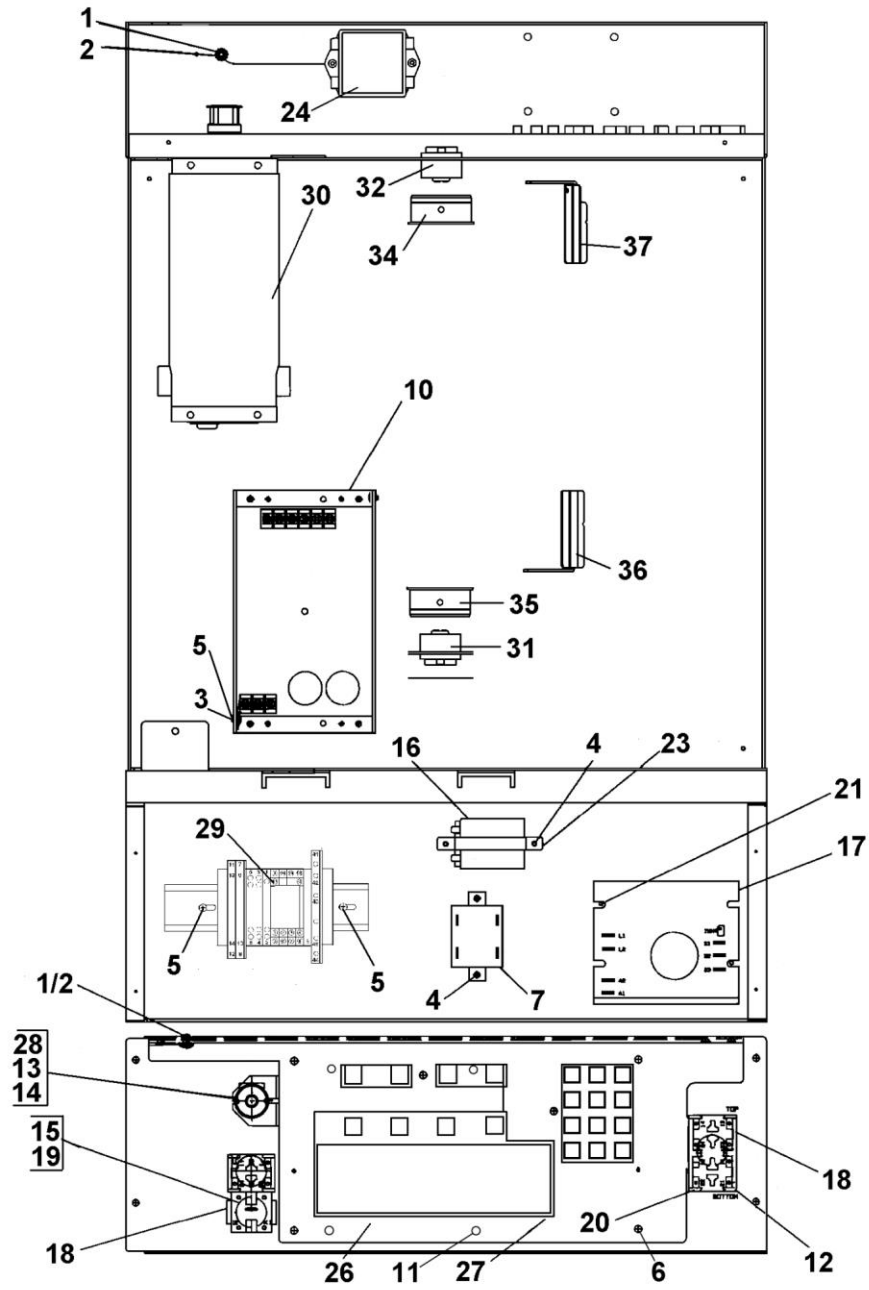
# GROUP 4 Guides and Belts



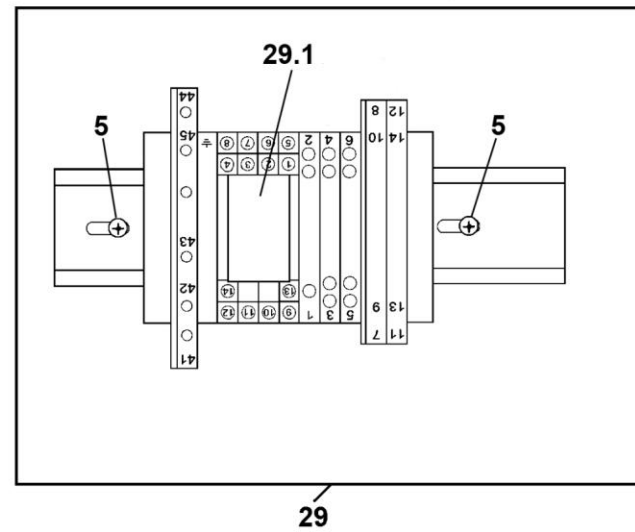
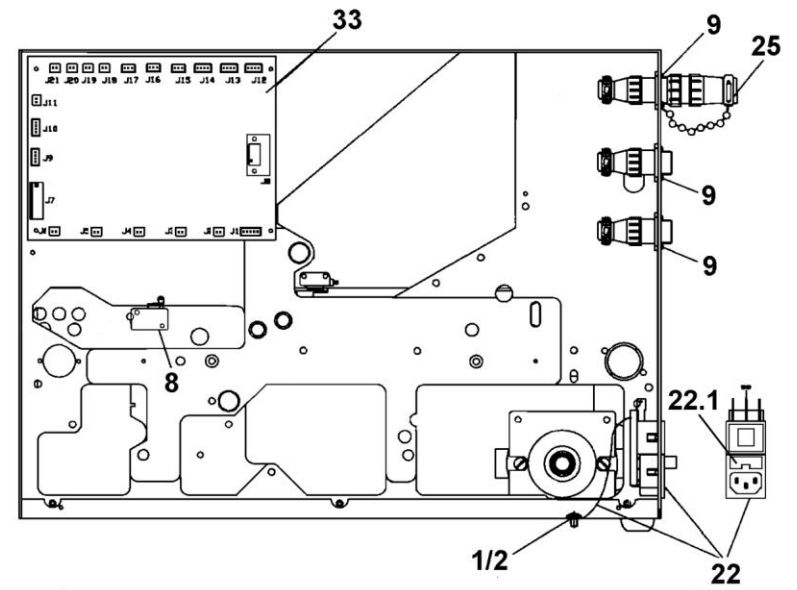
## GROUP 4 Guides and Belts

KEY	PART NO.	DESCRIPTION	QTY
1.	123-0017	SCREW, 10-32 x 1/4 TRUSS HD. PH SS	7
2.	123-0275	SCREW, 6-32 x 1/4 OVAL CSK HD. PH SS	4
3.	123-1136	SCREW, 8-32 x 1/4 TRUSS HD. PH SS	4
4.	123-1210	SCREW, 10-32 x 3/8 BTN. HD. SOC. CAP SS, BLACK	2
5.	123-1650	RING, EXTERNAL RETAINING 1/2 x 0.468 x 0.039	1
6.	123-1790	BEARING, SNAP-IN 1/2"	2
7.	123-2366	BELT, TIMING, 330 XL037	1
8.	41E-100-04	FRONT SIDE FRAME WELDMENT	1
8.1.	123-0486	SCREW, 10-32 x 7/16 SOC. HD. CAP	1
8.2.	41-101-11	DOUBLE PULLEY ASSEMBLY	1
8.3.	41-101-22	TENSIONER ASSEMBLY	1
8.4.		FRONT AND REAR BRIDGE ASSEMBLY (SEE GROUP 11)	1
9.	41E-100-17	FRONT CLOSURE ASSEMBLY	1
10.	41-102-02	HEAD ADJUST. POST ASSEMBLY, LEFT HAND	1
10.1.	41-102-18	HEAD POST CLOSURE ASSEMBLY, LH (w/KNOB)	1
11.	41-102-07	HEAD ADJUST. POST ASSEMBLY, RIGHT HAND	1
11.1.	41-102-19	HEAD POST CLOSURE ASSEMBLY, RH (w/KNOB)	1
12.	41-102-13	CRASH TAB CROSS BAR	2

KEY	PART NO.	DESCRIPTION	QTY
13.	41-103-21	REGISTRATION DEVICE ASSEMBLY, FRONT	1
14.	41-103-31	REGISTRATION DEVICE ASSEMBLY, REAR	1
15.	41-104-21	BRAKE BRACKET ASSEMBLY	1
16.	41E-106-01	APPLICATOR HEAD ASSEMBLY (SEE GROUP 13)	1
16.1.	29-103-09	BALL BEARING HOUSING ASSEMBLY	1
16.2.	41-106-38	PULLEY, 24XL, TOP EXIT ROLLER	1
16.3.	99-100-98	BALL BEARING HOUSING ASSEMBLY	1
17.		SIDE GUIDE BRACKET ASSEMBLY (SEE GROUP 14)	1
18.	41-107-27	SIDE GUIDE BAR	1
19.		GUIDE BRACKET REAR ASSEMBLY (SEE GROUP 15)	1
20.	62-100-50	KNOB, METERING BRACKET	1
21.	41-106-28	LOCK BRACKET REAR ASSEMBLY	1
22.	41-106-19	LOCK BRACKET FRONT ASSEMBLY	1
23.	123-0114	WASHER, PLASTIC 3/16 x 7/16 x 1/32	5
24.	123-0017	SCREW, 10-32 x 1/4 PH TRUSS HD.	4
25.	41-106-07	HEAD CENTER PLATE	1



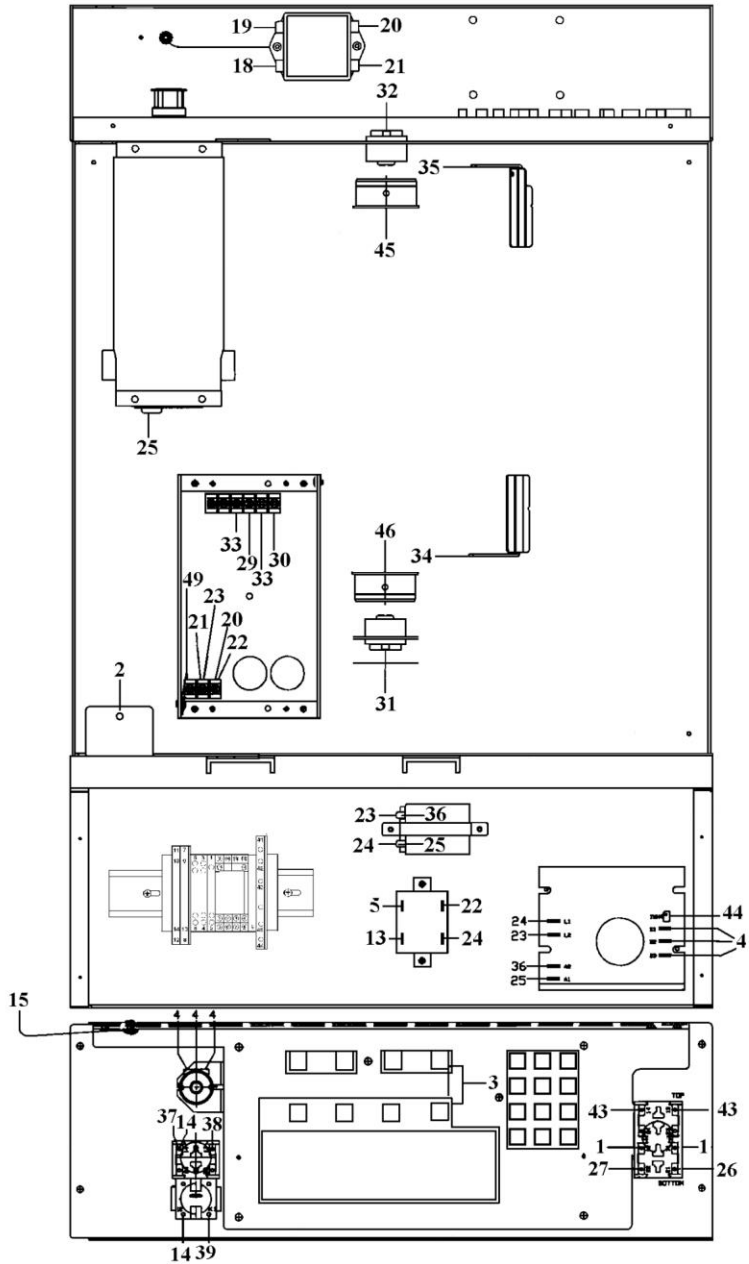
## GROUP 5A Electrical



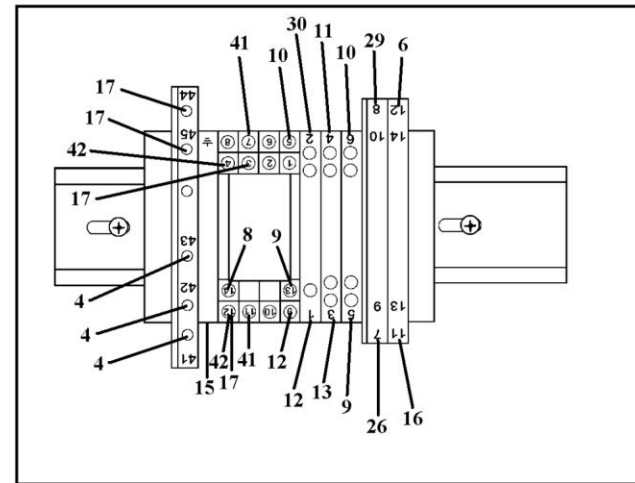
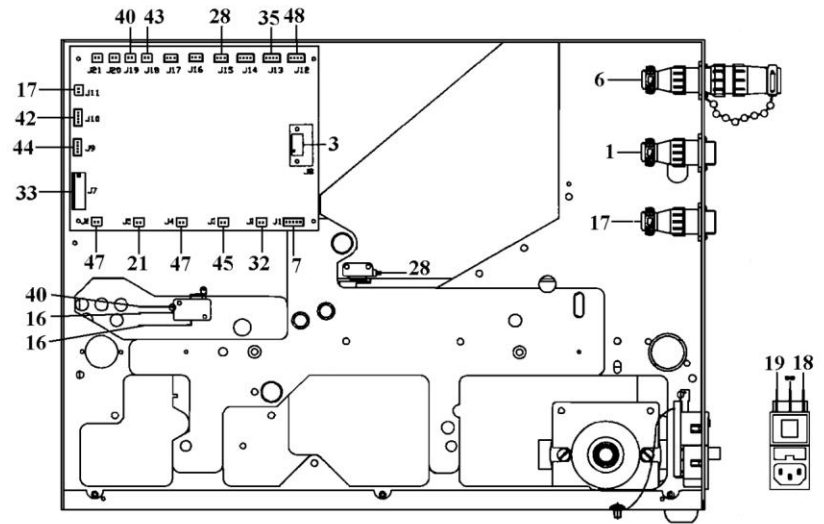
## GROUP 5A Electrical

KEY	PART NO.	DESCRIPTION	QTY
1.	123-0017	SCREW, 10-32 x 1/4 TRUSS HD PH SS	3
2.	123-0237	STAR WASHER, #10 EXTERNAL	4
3.	123-0252	STAR WASHER, #6 EXTERNAL	1
4.	123-0274	SCREW, 6-32 x 3/8 TRUSS HD PH SS	6
5.	123-0461	SCREW, 6-32 x 3/16 SS PH ROUND HD	7
6.	123-0612	SCREW, 6-32 x 1/4 PH PAN SS	6
7.	123-0831	RELAY, AC SOLID STATE	1
8.	123-0988	SWITCH, MICRO	1
9.	123-1135	SCREW, 6-32 x 1/4 TRUSS HD PH SS	6
10.	123-1313T	12V POWER SUPPLY, MAP80-1012G	1
11.	123-1323	SCREW, 4-40 x 3/16 TRUSS HD PH SS	4
12.	123-1367	PUSHBUTTON, RED MUSHROOM (EMERGENCY)	1
13.	123-1518	CAP, GRAY WITH WHITE LINE	1
14.	123-1519	KNOB, S291 250	1
15.	123-1540A	SWITCH, GREEN PUSHBUTTON	1
16.	123-1604	RELAY, KUEP-3A15	1
17.	41-565-10	SPEED CONTROL, #MMXL02-D240AC-PCM-0000	1
18.	123-1981	BLOCK, CONTACT 1 NO	2
19.	123-2017	LAMP, T-3 1/4, 14V	1

KEY	PART NO.	DESCRIPTION	QTY
20.	123-2018	BLOCK, CONTACT 2NC	1
21.	123-2129	SCREW, 6-32 x 5/16 TRUSS HD PH SS	2
22.	21-500-04	POWER INLET GROUND FOR 115V	1
22.1	123-1398	FUSE, 2.5A, 250V, SLOW-BLOW	
23.	26-102-20	RELAY HOLDER ASSEMBLY	1
24.	29-500-16	FILTER ASSEMBLY	1
25.	33-500-152	JUMPER	1
26.	41-500-505	PROCESSOR BOARD	1
27.	33-500-540	PC BOARD, KEYPAD DISPLAY	1
28.	35-500-08	WIRE HARNESS ASSEMBLY, POTENTIOMETER	1
29.	35-500-180	TERMINAL BLOCK	1
29.1	123-2035	RELAY, 4PDT 12V DC COIL	
30.	41-500-12	DRIVE MOTOR	1
31.	41-500-18	CLUTCH HEAD 1 ASSEMBLY	1
32.	41-500-19	CLUTCH HEAD 2 ASSEMBLY	1
33.	41-500-30	I/O BOARD	1
34.	41-500-78	BRAKE ASSEMBLY, HEAD 2	1
35.	41-500-79	BRAKE ASSEMBLY, HEAD 1	1
36.	41-500-201	WIRE HARNESS, TAB SENSOR #1 ASSY.	1
37.	41-500-202	WIRE HARNESS, TAB SENSOR #2 ASSY.	1



## GROUP 5B Electrical Point-to-Point Wiring



**GROUP 5B**  
**Electrical**  
**Point-to-Point Wiring**

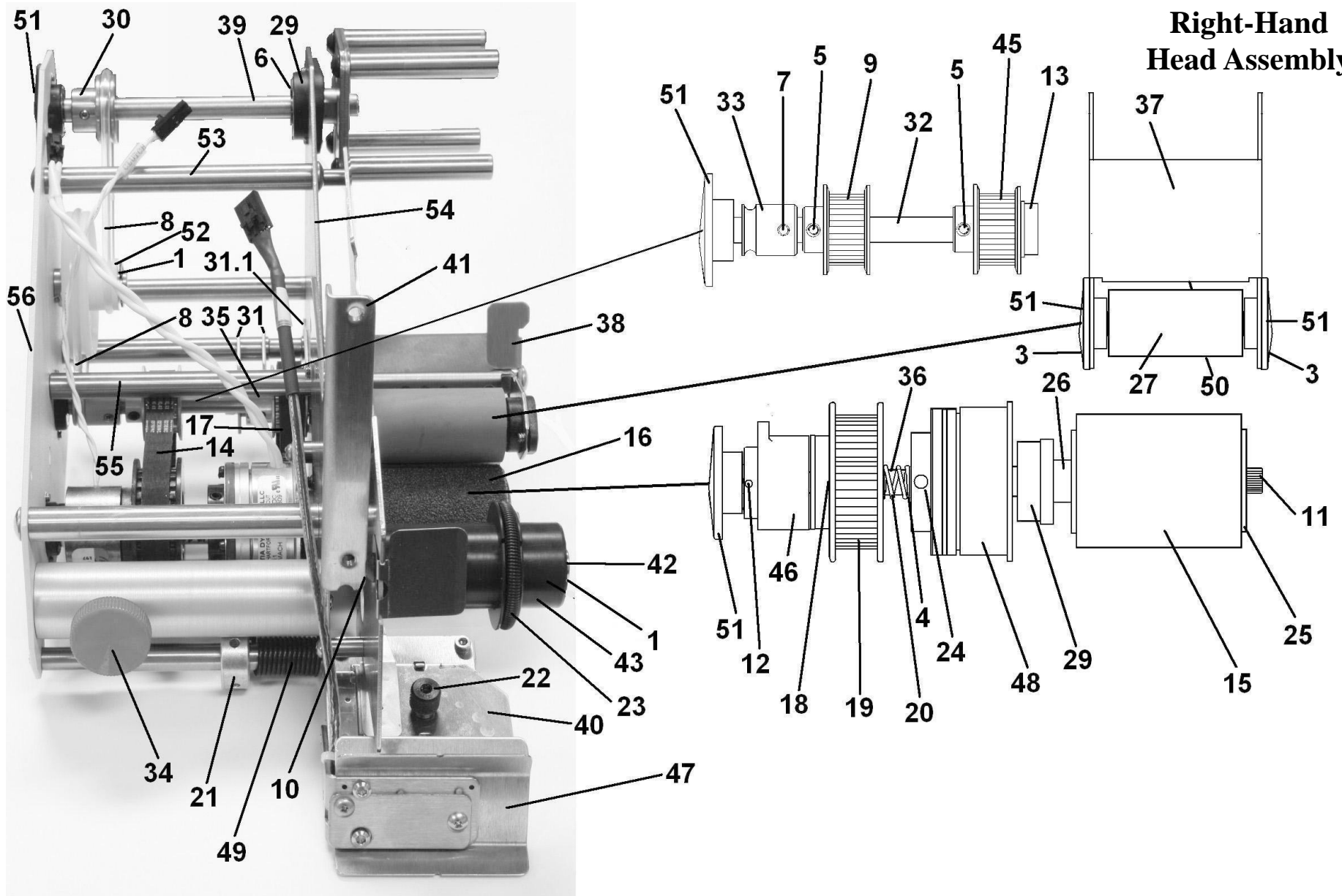
KEY	PART NO.	DESCRIPTION	TO	FROM	QTY
1.	33-500-113	WIRE HARNESS - INTERFACE 3	123-0654	O11/O12	1
2.	33-500-135	WIRE HARNESS-ENCODER ASSEMBLY	123-1239	ENCODER	1
3.	33-500-33	CABLE, VGA 6-FT. HD15-MF-6	J8	J3	1
4.	35-500-08	POTENTIOMETER ASSEMBLY	S1/S2/S3	C41/C42/C43	1
5.	35-500-11	WIRE HARNESS, TERMINAL BLOCK-S.S. RELAY	C5	OP1-3	1
6.	35-500-111	WIRE HARNESS, INTERFACE 1	123-1810	C10/C12	1
7.	35-500-132	WIRE HARNESS, ENCODER EXTENSION	ENCODER	J1	1
8.	35-500-17	WIRE HARNESS, TERMINAL BLOCK-RELAY	C3	F14	1
9.	35-500-18	WIRE HARNESS, TERMINAL BLOCK-RELAY	C5	F13	1
10.	35-500-19	WIRE HARNESS, TERMINAL BLOCK-RELAY	C6	F5	1
11.	35-500-21	JUMPER, TERMINAL BLOCK	C4	C14	1
12.	35-500-22	WIRE HARNESS, TERMINAL BLOCK-RELAY	C1	F9	1
13.	35-500-23	WIRE HARNESS, TERMINAL BLOCK-S.S. RELAY	C3	OP1-4	1
14.	35-500-25	JUMPER, TRANSPORT SWITCH	X2	24	1
15.	35-500-28	WIRE HARNESS, CONTROL PANEL GROUND	GND	GND	1
16.	35-500-32	WIRE HARNESS, SAFETY SWITCH-TERMINAL BLOCK	COM/NO	C11/C13	1
17.	41-500-44	WIRE HARNESS, FEEDER INTERFACE EXTENSION	123-1454	J11/NO/S1/S2/F4/F12	1
18.	41-500-01	WIRE HARNESS, POWER INLET-FILTER	L1	LINE1	1
19.	41-500-02	WIRE HARNESS, POWER INLET-FILTER	N1	LINE2	1
20.	41-500-03	WIRE HARNESS, FILTER-POWER SUPPLY	LOAD 1	TB1-3	1
21.	41-500-04	WIRE HARNESS, FILTER-POWER SUPPLY	LOAD 2	TB1-2	1
22.	41-500-05	WIRE HARNESS, SUPPLY-S.S. RELAY	TB1-3	OP1-1	1
23.	41-500-06	WIRE HARNESS, POWER SUPPLY-SPEED CONTROL-RELAY	TB1-2	L2/A	1
24.	41-500-07	WIRE HARNESS, S.S. RELAY-SPEED CONTROL-RELAY	OP1-2	L1/B	1
25.	41-500-12	MOTOR ASSEMBLY, RAE M6040 (90V), 1154 RPM	123-1400	A1/6	1
26.	41-500-13	WIRE HARNESS, TERMINAL BLOCK-SAFETY SWITCH	C7	O21	1
27.	41-500-14	WIRE HARNESS, TERMINAL BLOCK-SAFETY SWITCH	C9	O22	1
28.	41-500-145	WIRE HARNESS ASSEMBLY, MEDIA SENSOR	123-2033	J15	1
29.	41-500-15	WIRE HARNESS, POWER SUPPLY-TERMINAL BLOCK	TB2-4	C8	1
30.	41-500-16	WIRE HARNESS, POWER SUPPLY-TERMINAL BLOCK	TB2-6	C2	1
31.	41-500-18	CLUTCH ASSEMBLY	123-1170	CLUTCH	1

**GROUP 5B**  
**Electrical**  
**Point-to-Point Wiring (Continued)**

KEY	PART NO.	DESCRIPTION	TO	FROM	QTY
32.	41-500-19	CLUTCH ASSEMBLY	123-1871	J2	1
33.	41-500-20	CABLE, POWER SUPPLY	TB2-5/GND/TB2-7	J7	1
34.	41-500-201	WIRE HARNESS ASSEMBLY, TAB SENSOR #1	SENSOR	123-1989	1
35.	41-500-202	WIRE HARNESS ASSEMBLY, TAB SENSOR #2	J13	123-1989	1
36.	41-500-21	WIRE HARNESS, SPEED CONTROL-RELAY	A2	4	1
37.	41-500-24	WIRE HARNESS, TERMINAL BLOCK-TRANSPORT SWITCH	C6	14	1
38.	41-500-26	WIRE HARNESS, TERMINAL BLOCK-TRANSPORT SWITCH	C2	13	1
39.	41-500-27	WIRE HARNESS, TERMINAL BLOCK-TRANSPORT SWITCH	C4	X1	1
40.	41-500-31	WIRE HARNESS, SAFETY COVER SWITCH-I/O BOARD	NC	J19	1
41.	41-500-33	WIRE HARNESS, F RELAY-INTERFACE	F7/F11	NO/NO	1
42.	41-500-34	WIRE HARNESS, I/O BOARD-F RELAY	F4/F12	J10/NO	1
43.	41-500-35	WIRE HARNESS, I/O BOARD-PUSHBUTTON	J18	N13/N14	1
44.	41-500-39	WIRE HARNESS, I/O BOARD-SPEED CONTROL	J9	INHIBIT	1
45.	41-500-78	WIRE HARNESS, BRAKE ASSEMBLY	123-1972	J3	1
46.	41-500-79	WIRE HARNESS, BRAKE ASSEMBLY	123-1972	BRAKE	1
47.	41-500-80	WIRE HARNESS, CLUTCH BRAKE EXTENSION	J4/J6	BRAKE / CLUTCH	1
48.	41-500-81	WIRE HARNESS, SENSOR EXTENSION	SENSOR	J12	1
49.	97-500-230	WIRE HARNESS, POWER SUPPLY-GROUND	TB1-1	GND	1



**GROUP 6  
HEAD 1  
Right-Hand  
Head Assembly**

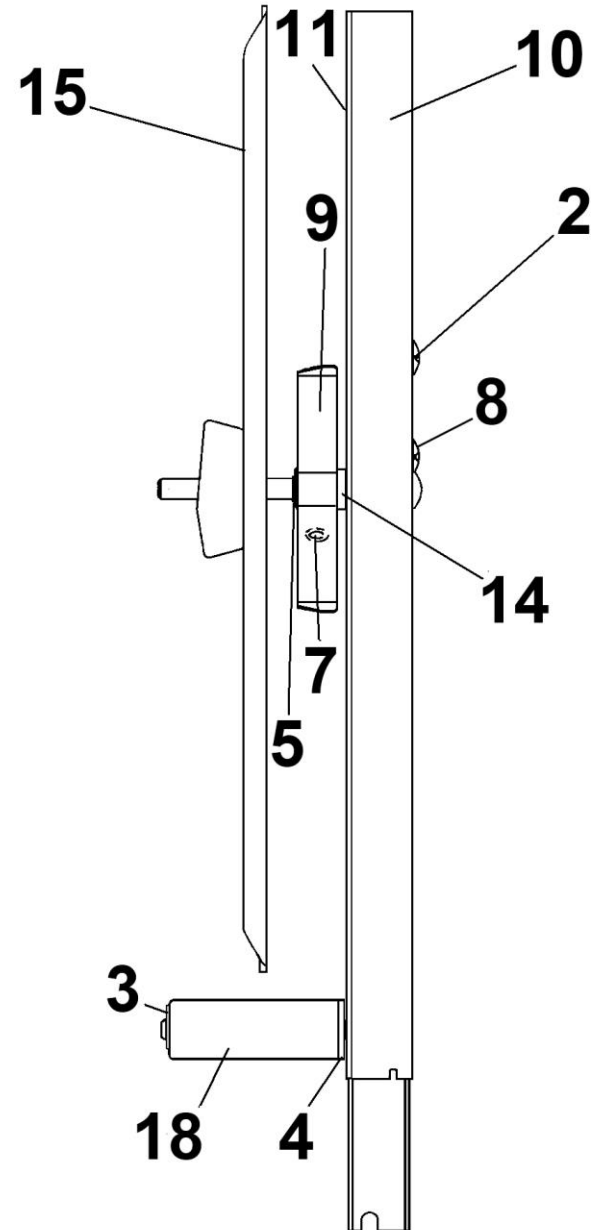
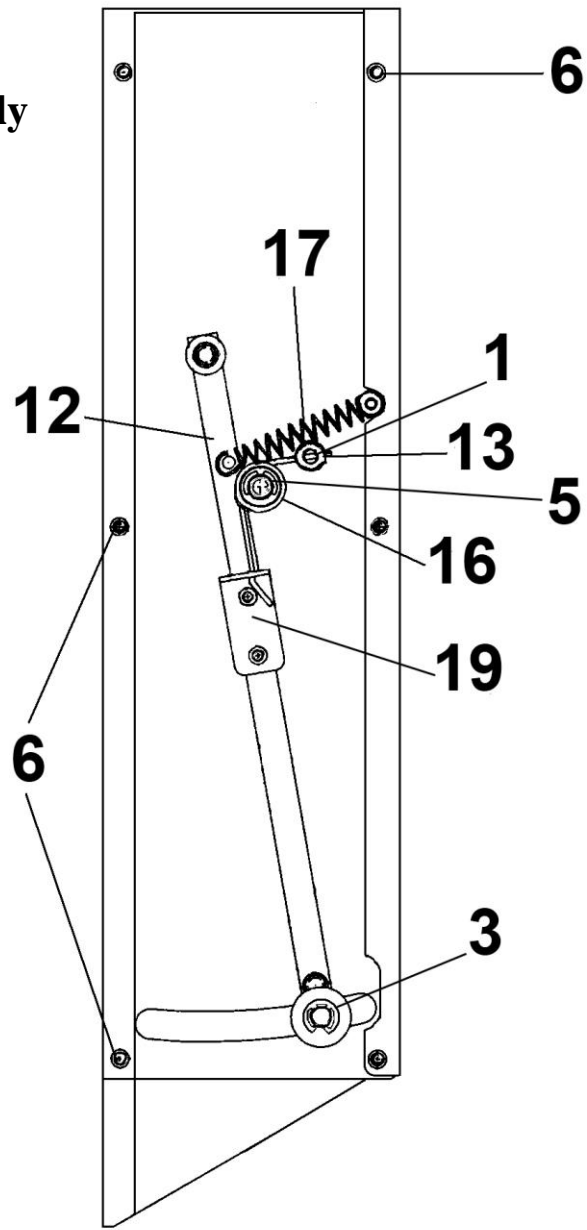


## GROUP 6 – HEAD 1

### Right-Hand Head Assembly

KEY	PART NO.	DESCRIPTION	QTY	KEY	PART NO.	DESCRIPTION	QTY
	<b>41E-110-02</b>	<b>RIGHT-HAND HEAD ASSEMBLY (Includes all parts listed below)</b>	<b>1</b>				
1.	123-0006	TRU ARC # 5137-39	2	30.	35-116-08	WASTE TAKE-UP PULLEY	2
2.	123-0035	BEARING, NMB R-4-HH	4	31.	41-110-11	PULLEY GUIDE, RIGHT HAND	2
3.	123-0275	SCREW, 6-32 x 1/4 OVAL PH HD	10	31.1.	41-110-12	PULLEY GUIDE, LEFT HAND	1
4.	123-0312	WASHER	1	32.	41-110-21	HEAD DISTRIBUTOR SHAFT	1
5.	123-0322	SET SCREW	2	33.	41-110-22	TAKE-UP DRIVE PULLEY	1
6.	123-0432	TRU ARC # 5133-31	1	34.	41-110-34	BRASS SCREW ASEMBLY, 1/4-20	1
7.	123-0757	SET SCREW, 6-32 x1/4 STD CAP PT	1	35.	41-110-35	PULLEY GUIDE STUD	1
8.	123-0773	O-RING, 0.125 x 7.25 83A HARDNESS	2	36.	41-111-03	CLUTCH SHAFT, RIGHT HAND	1
9.	123-0990	PULLEY, 14XLO37 .563W x 5/16 ID	1	37.	41-111-11	IDLER ROLLER FRAME, RIGHT HAND	1
10.	123-1210	SCREW, 10-32 x 3/8 SOC CAP BTN HD	1	38.	41-111-15	IDLER ROLLER FRAME ECCENTRIC ASSY.	1
11.	123-1680	SCREW, SOC HEAD, R/H THREAD	1	39.	41-111-21	WASTE TAKE UP SPOOL ASSEMBLY	1
12.	123-1828	ROLL PIN	1	40.	41-112-18	TAB SEPARATOR BRACKET ASSEMBLY	1
13.	123-1064	BEARING	1	41.	41-113-04	RIGHT HAND HEAD REEL HOLDER	1
14.	123-2099	BELT	1	41A.	41-113-06	RIGHT HAND HEAD TAB GUIDE	1
15.	35-110-30	DRUM, EXPANDING RUBBER SANDING	1	42.	41-113-13	TAB IDLER ROLLER STUD	1
16.	123-2116	SANDPAPER ROLLER	1	43.	41-113-14	TAB IDLER ROLLER	1
17.	123-2369	BELT	1	44.	41-113-15	TAB HOLDER, RIGHT HAND	1
18.	27-102-10	CLUTCH SUPPORT WASHER	1	45.	41-120-17	PULLEY 24 GROOVES 3MM HTD.	1
19.	29-103-06	CLUTCH PULLEY ASSY., 26XL GROOVES	1	46.	41-500-18	CLUTCH ASSEMBLY, RIGHT HAND	1
20.	29-103-08	SPRING	1	47.	41-500-201	TAB SENSOR #1, ASSEMBLY	1
21.	33-108-16	COLLAR, SPRING ADJUST.	1	48.	41-500-79	BRAKE ASSEMBLY, RIGHT HAND	1
22.	33-112-15	SENSOR SCREW	1	49.	56-102-19	TORSION SPRING	1
23.	33-122-21	TAB GUIDE ASSEMBLY	1	50.	62-108-30	SPRING, PRESSURE ROLLER ( <i>NOT SHOWN</i> )	3
24.	33-125-24	KEY ( <i>NOT SHOWN</i> )	1	51.	90-103-52	BALL BEARING HOUSING	3
25.	35-110-05	WASHER	1	52.	40-109-11	DOUBLE O-RING PULLEY	1
26.	35-110-06	SPACER	1	53.	41-110-26	CROSSBAR	3
27.	35-110-15	IDLER ROLLER	1	54.	41-110-05	RIGHT HAND HEAD SIDE FRAME, FRONT	1
28.	35-110-23	BALL BEARING HOUSING ASSEMBLY	1	55.	41-110-27	REEL CROSSBAR	1
29.	35-110-24	BALL BEARING HOUSING	2	56.	41E-110-07	RIGHT HAND HEAD SIDE FRAME, REAR	1

**GROUP 7**  
**HEAD 1**  
**Reel Assembly**



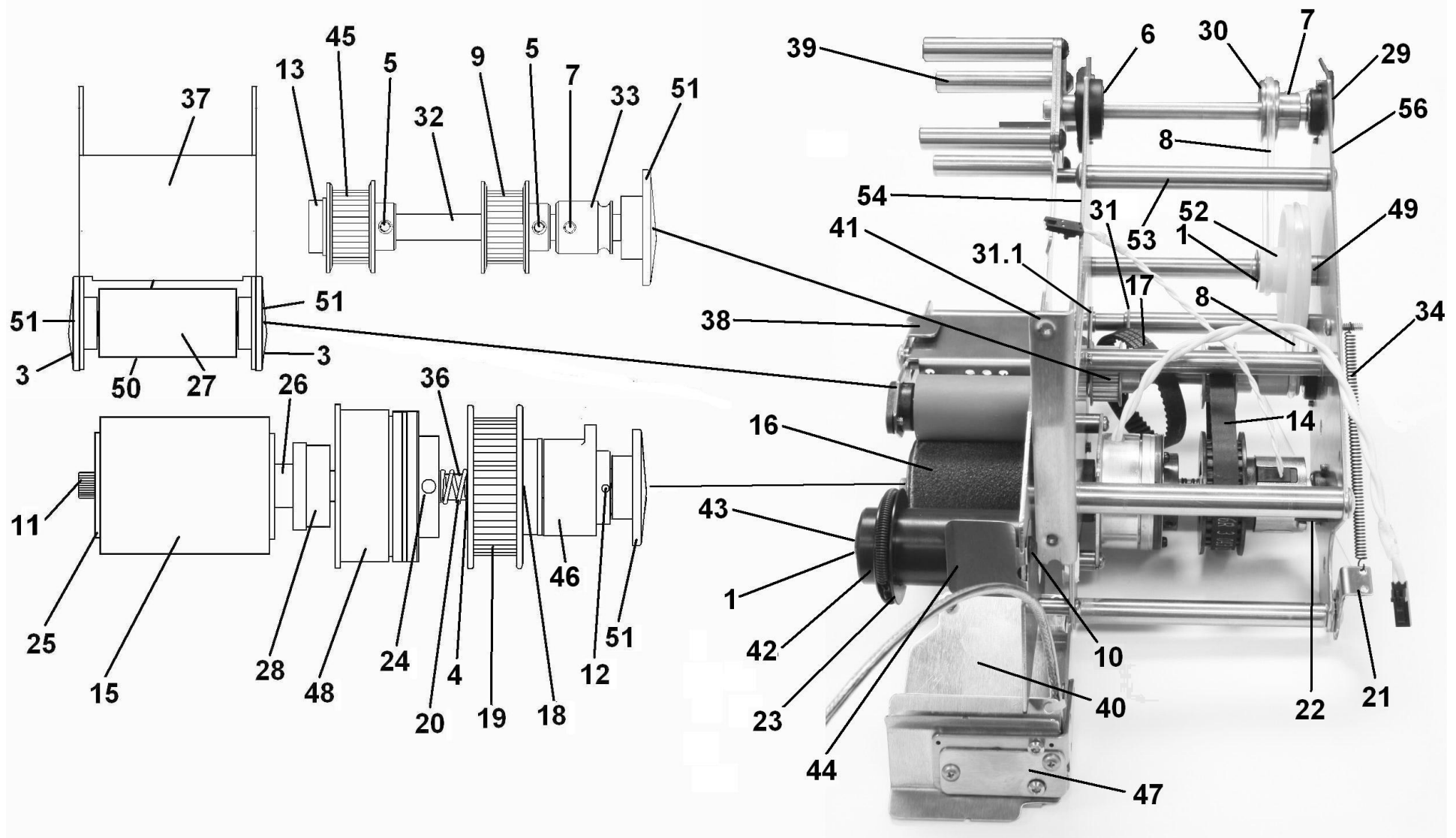
**GROUP 7**  
**HEAD 1**  
**Reel Assembly**

KEY	PART NO.	DESCRIPTION	QTY
	41-114-23	RIGHT-HAND REEL ASSEMBLY (HEAD 1) (Includes all parts listed below)	1
1.	123-0010	SET SCREW, 6-32 x 1/8 CUP PT	1
2.	123-0017	SCREW, 10-32 x 1/4 PH TRUSS HD	2
3.	123-0081	1/4 TRU ARC #5133-25	1
4.	123-0311	WASHER, NYLON	1
5.	123-0432	TRU ARC #5133-31	1
6.	123-0975	SCREW, 4-40 x 1/4 PH FH SS	6
7.	123-1161	SET SCREW, 3/4-20 x 3/8 CUP PT	1
8.	123-1206	SCREW, 10-32 x 1/4 BTN HD SOC CAP SS, BLK	1
9.	33-125-08	LABEL SUPPLY HUB	1
10.	41-114-24	REEL BODY SUBASSEMBLY, RIGHT HAND	1
11.	41-114-26	REEL CLOSURE, RIGHT HAND 12"	1
12.	41-114-28	REEL ARM ASSEMBLY, RIGHT HAND	1
13.	41-114-12	REEL SPRING STUD	1
14.	41-114-13	REEL SPOOL HUB	1
15.	41-114-15	REEL ROLL GUIDE	1
16.	41-114-33	REEL TORSION SPRING CCW	1
17.	80-120-23	REEL ARM SPRING	1
18.	90-106-11	PLASTIC ROLLER	1
19.	41-114-07	REEL SPRING LOCK	1

# GROUP 8

## HEAD 2

### Left-Hand Head Assembly

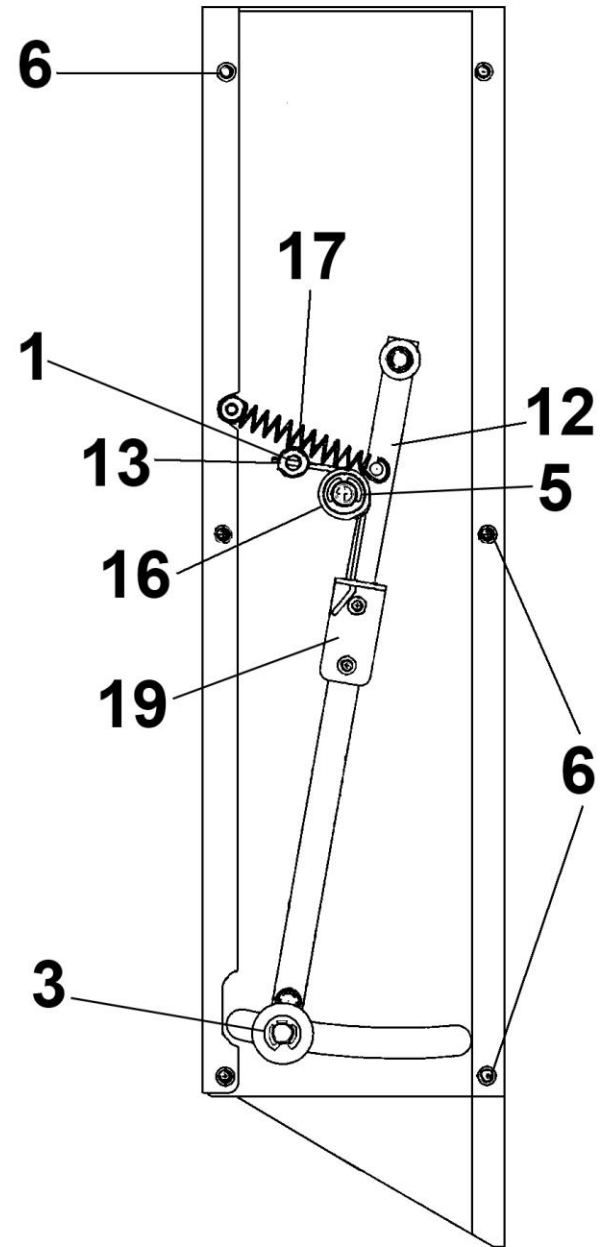
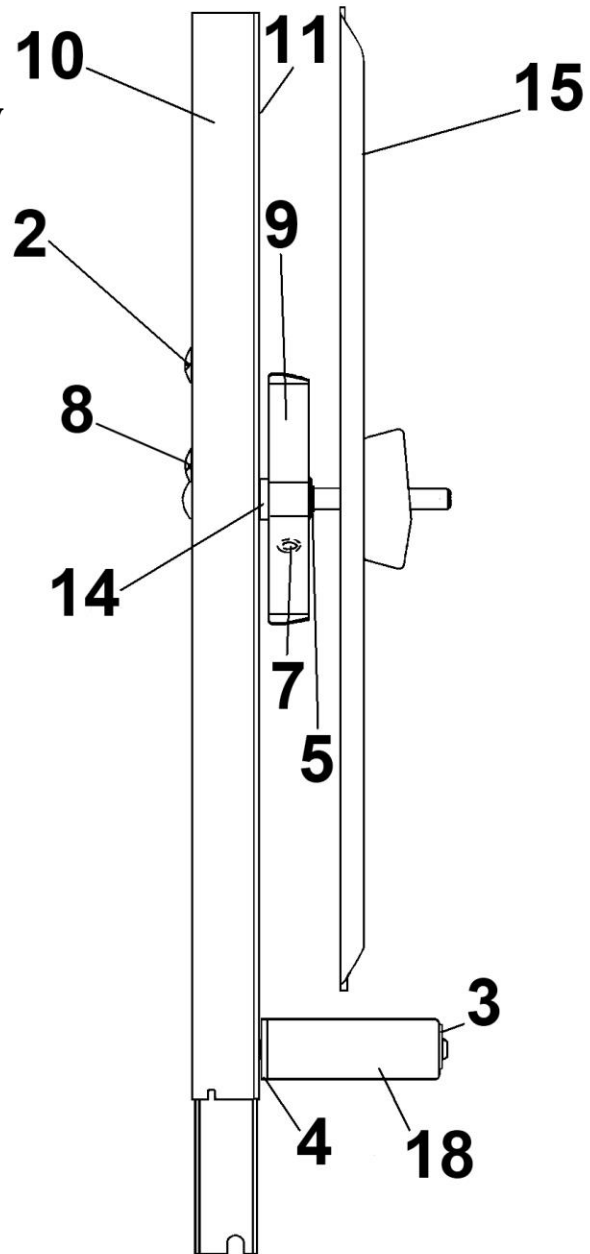


## GROUP 8 – HEAD 2

### Left-Hand Head Assembly

KEY	PART NO.	DESCRIPTION	QTY	KEY	PART NO.	DESCRIPTION	QTY
	<b>41-120-02</b>	<b>LEFT-HAND HEAD ASSEMBLY (Includes all parts listed below)</b>	<b>1</b>				
1.	123-0006	TRU ARC # 5137-39	2	30.	35-116-08	WASTE TAKE-UP PULLEY	2
2.	123-0035	BEARING, NMB R-4-HH	4	31.	41-110-12	PULLEY GUIDE, LEFT HAND	1
3.	123-0275	SCREW, 6-32 x 1/4 OVAL PHIL HD	10	31.1.	41-110-11	PULLEY GUIDE, RIGHT HAND	1
4.	123-0312	WASHER	1	32.	41-110-21	HEAD DISTRIBUTOR SHAFT	1
5.	123-0322	SET SCREW	2	33.	41-110-22	TAKE-UP DRIVE PULLEY	1
6.	123-0432	TRU ARC # 5133-31	1	34.	41-110-34	BRASS SCREW ASSEMBLY, 1/4-20	1
7.	123-0757	SET SCREW, 6-32 x 1/4 STD CAP PT	1	35.	41-110-35	PULLEY GUIDE STUD	1
8.	123-0773	O-RING, 0.125 x 7.25 83A HARDNESS	2	36.	41-121-03	CLUTCH SHAFT, LEFT HAND	1
9.	123-0990	PULLEY, 14XLO37 .563W x 5/16 ID	1	37.	41-121-11	IDLER ROLLER FRAME, LEFT HAND	1
10.	123-1210	SCREW, 10-32 x 3/8 SOC CAP BTN HD	1	38.	41-121-15	IDLER ROLLER FRAME ECCENTRIC ASSY.	1
11.	123-2108	SCREW, SOC HEAD, LEFT HAND THREAD	1	39.	41-111-21	WASTE TAKE UP SPOOL ASSEMBLY	1
12.	123-1828	ROLL PIN	1	40.	41-122-20	TAB SEPARATOR BRACKET ASSEMBLY	1
13.	123-1064	BEARING	1	41.	41-123-04	LEFT HAND HEAD REEL HOLDER	1
14.	123-2099	BELT	1	41A.	41-123-06	LEFT HAND HEAD TAB GUIDE	1
15.	35-110-30	DRUM, EXPANDING RUBBER SANDING	1	42.	41-113-13	TAB IDLER ROLLER STUD	1
16.	123-2116	SANDPAPER ROLLER	1	43.	41-113-14	TAB IDLER ROLLER	1
17.	123-2369	BELT	1	44.	41-123-15	TAB HOLDER, LEFT HAND	1
18.	27-102-10	CLUTCH SUPPORT WASHER	1	45.	41-120-17	PULLEY 24 GROOVES 3MM HTD	1
19.	29-103-06	CLUTCH PULLEY ASSY, 26XL GROOVES	1	46.	41-500-19	CLUTCH ASSEMBLY, LEFT HAND	1
20.	29-103-08	SPRING	1	47.	41-500-202	TAB SENSOR #2 ASSEMBLY	1
21.	41-122-25	SPRING ARM	1	48.	41-500-78	BRAKE ASSEMBLY, LEFT HAND	1
22.	123-0034	ROLL PIN	1	49.	35-102-09	PULLEY SHAFT	1
23.	33-122-21	TAB GUIDE ASSEMBLY	1	50.	62-108-30	SPRING, PRESSURE ROLLER <i>(NOT SHOWN)</i>	3
24.	33-125-24	KEY <i>(NOT SHOWN)</i>	1	51.	90-103-52	BALL BEARING HOUSING	3
25.	35-110-05	WASHER	1	52.	40-109-11	DOUBLE O-RING PULLEY	1
26.	35-110-06	SPACER	1	53.	41-110-26	CROSSBAR	3
27.	35-110-15	IDLER ROLLER	1	54.	41-120-05	LEFT HAND HEAD SIDE FRAME, FRONT	1
28.	35-110-23	BALL BEARING HOUSING ASSEMBLY	1	55.	41-110-27	REEL CROSSBAR	1
29.	35-110-24	BALL BEARING HOUSING	2	56.	41-120-07	LEFT HAND HEAD SIDE FRAME, REAR	1

**GROUP 9**  
**HEAD 2**  
**Reel Assembly**

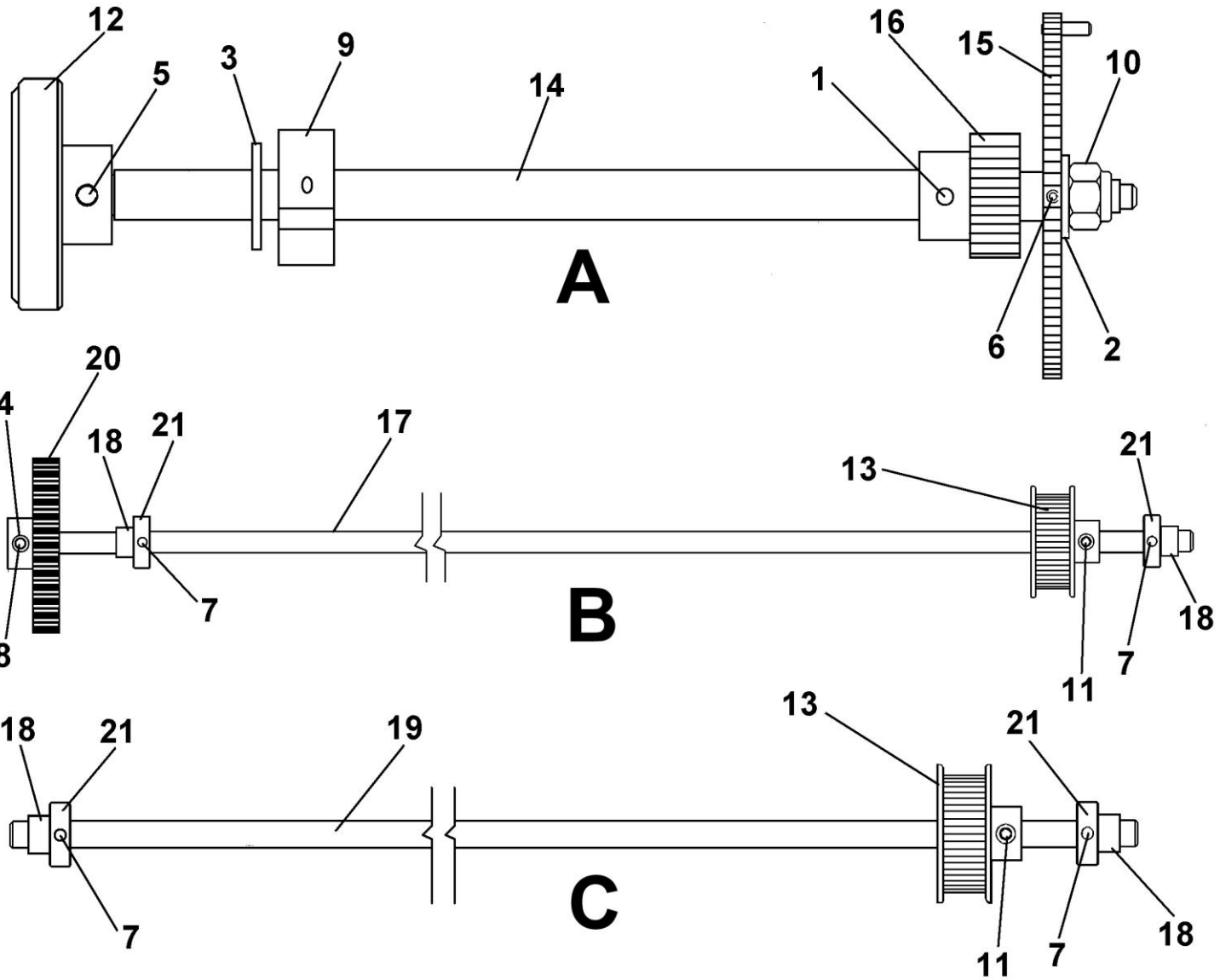


**GROUP 9**  
**HEAD 2**  
**Reel Assembly**

KEY	PART NO.	DESCRIPTION	QTY
	<b>41-114-03</b>	<b>LEFT-HAND REEL ASSEMBLY (HEAD 2)</b> <b>(Includes all parts listed below)</b>	<b>1</b>
1.	123-0010	SET SCREW, 6-32 x 1/8 CUP PT	1
2.	123-0017	SCREW, 10-32 x 1/4 PH TRUSS HD	2
3.	123-0081	1/4 TRU ARC #5133-25	1
4.	123-0311	WASHER, NYLON	1
5.	123-0432	TRU ARC #5133-31	1
6.	123-0975	SCREW, 4-40 x 1/4 PH FH SS	6
7.	123-1161	SET SCREW, 3/4-20 x 3/8 CUP PT	1
8.	123-1206	SCREW,10-32 x 1/4 BTN HD SOC CAP SS, BLK	1
9.	33-125-08	LABEL SUPPLY HUB	1
10.	41-114-04	REEL BODY SUBASSEMBLY, LEFT HAND	1
11.	41-114-06	REEL CLOSURE, LEFT HAND 12"	1
12.	41-114-08	REEL ARM ASSEMBLY, LEFT HAND	1
13.	41-114-12	REEL SPRING STUD	1
14.	41-114-13	REEL SPOOL HUB	1
15.	41-114-15	REEL ROLL GUIDE	1
16.	41-114-35	REEL TORSION SPRING CW	1
17.	80-120-23	REEL ARM SPRING	1
18.	90-106-11	PLASTIC ROLLER	1
19.	41-114-07	REEL SPRING LOCK	1



**GROUP 10**  
**Eccentric Shafts and Handle Shaft**

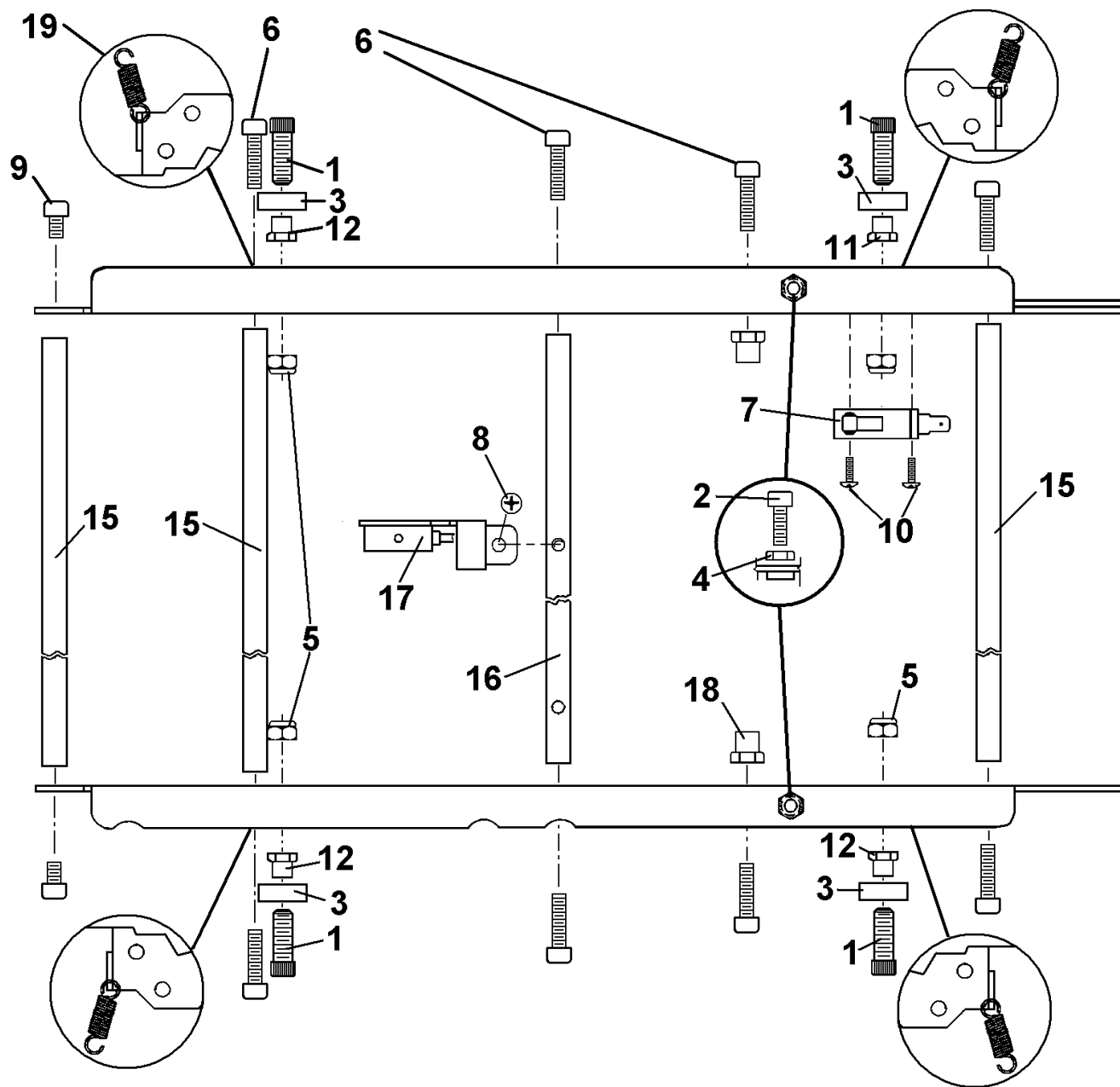


## GROUP 10

### Eccentric Shafts and Handle Shaft

KEY	PART NO.	DESCRIPTION	QTY
A	41-104-03	HANDLE SHAFT ASSEMBLY	1
B	41-104-10	ECCENTRIC SHAFT ASSEMBLY, RIGHT HAND	1
C	41-104-13	ECCENTRIC SHAFT ASSEMBLY, LEFT HAND	1
1	123-0034	SPRING PIN	1
2	123-0063	WASHER, 5/8 OD x 9/32 ID x 1/16	1
3	123-0096	WASHER	1
4	123-0252	STAR WASHER, EXTERNAL	1
5	123-0322	SET SCREW	1
6	123-0369	SPRING PIN	1
7	123-0757	SET SCREW, 6-32 x 1/4 STD CUP PT	4
8	123-1457	SCREW, 6-32 x 3/8 SOC HD CAP	1
9	123-1949	COLLAR	1
10	123-2059	NUT	1
11	123-2068	SET SCREW	2
12	123-2359	KNOB	1
13	35-104-33	PULLEY 22 XL	2
14	41-104-04	HANDLE SHAFT	1
15	41-104-06	BRAKE WHEEL SUBASSEMBLY	1
16	41-104-07	GEAR 20P-17T	1
17	41-104-11	ECCENTRIC SHAFT, RIGHT HAND	1
18	41-104-12	ECCENTRIC SHAFT SPACER	4
19	41-104-14	ECCENTRIC SHAFT, LEFT HAND	1
20	41-104-16	GEAR 20P-50T	1
21	94-124-14	ECCENTRIC CAM	4

# GROUP 11 Front and Rear Bridge

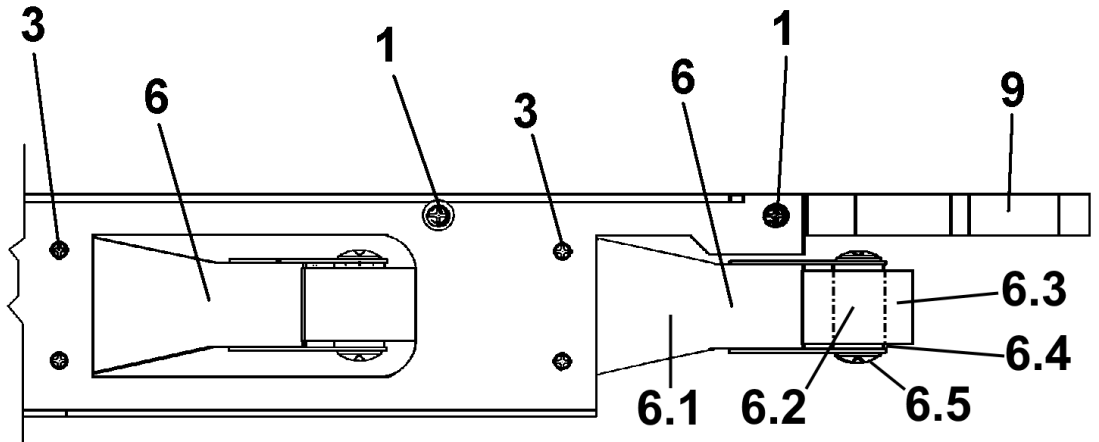
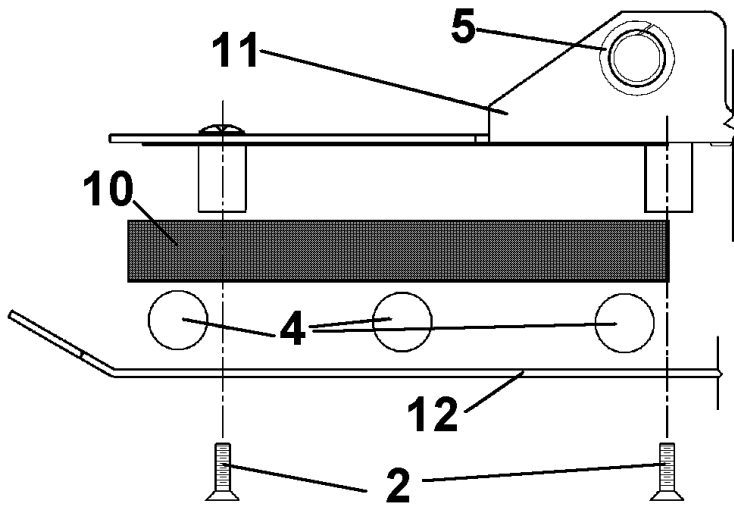


## GROUP 11

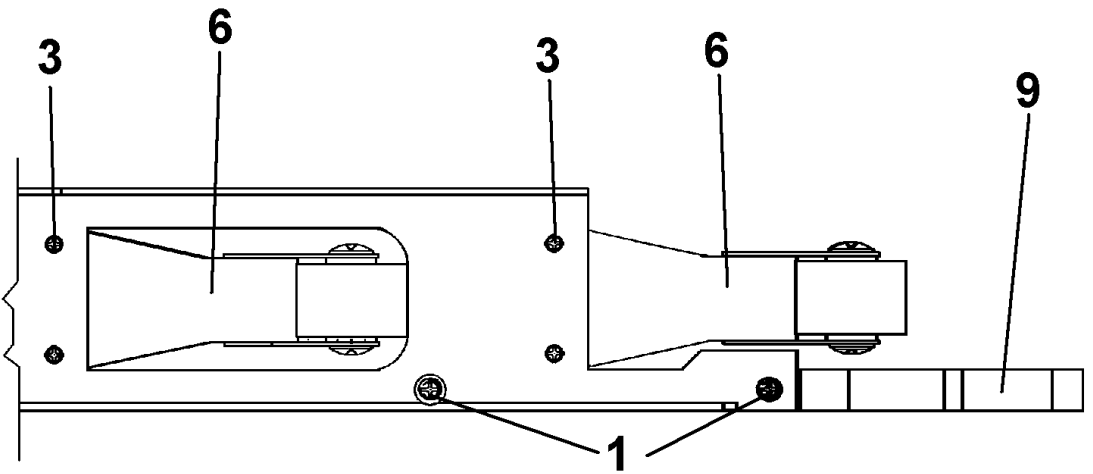
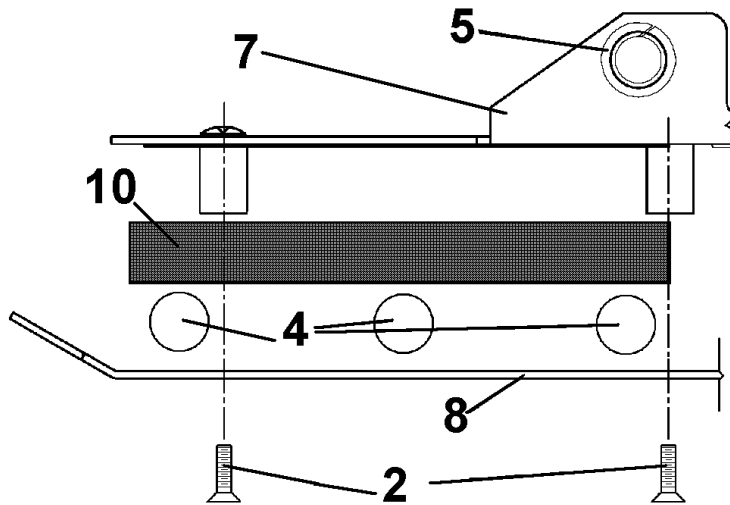
### Front and Rear Bridge

KEY	PART NO.	DESCRIPTION	QTY
1	123-0004	SCREW, 10-32 x 5/8 SOC HD	4
2	123-0015	SCREW, 10-32 x 3/4 BTN HD	2
3	123-0035	BEARING, NMPR-4HH	4
4	123-0050	NUT	2
5	123-0053	STOP NUT, 10-32NYLON INSERT	4
6	123-0434	SCREW, 10-32 x 5/16 SOC CAP SS	8
7	123-0988	INTERLOCK SWITCH	1
8	123-1136	SCREW	1
9	123-1206	SCREW, 10-32 x 1/4 BTN HD SOC CAP	2
10	123-2380	SCREW	2
11	35-103-25	ECCENTRIC BUSHING	1
12	35-103-26	BEARING BUSHING	3
13	41-103-04	FRONT BRIDGE	1
14	41-103-05	REAR BRIDGE WELDMENT	1
15	41-103-18	CROSS BAR	3
16	41-103-20	SENSOR CROSS BAR	1
17	41-103-38	MEDIA SENSOR ASSEMBLY	1
18	41-106-27	APPLICATOR HEAD ECCENTRIC	1
19	62-108-18	SPRING	8

**GROUP 12**  
**Registration Devices**



**REAR REGISTRATION DEVICE**



**FRONT REGISTRATION DEVICE**

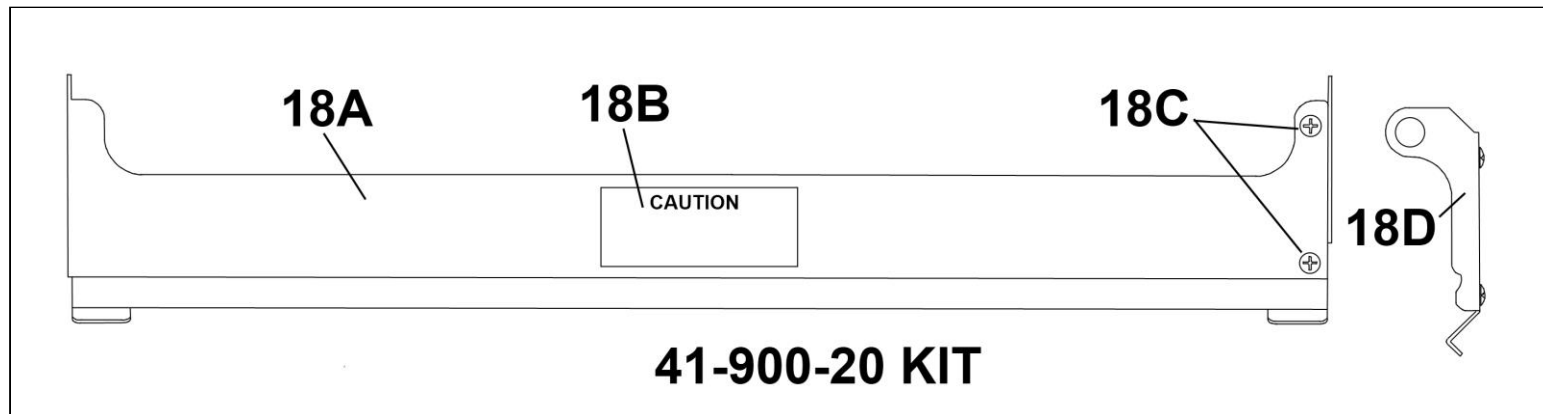
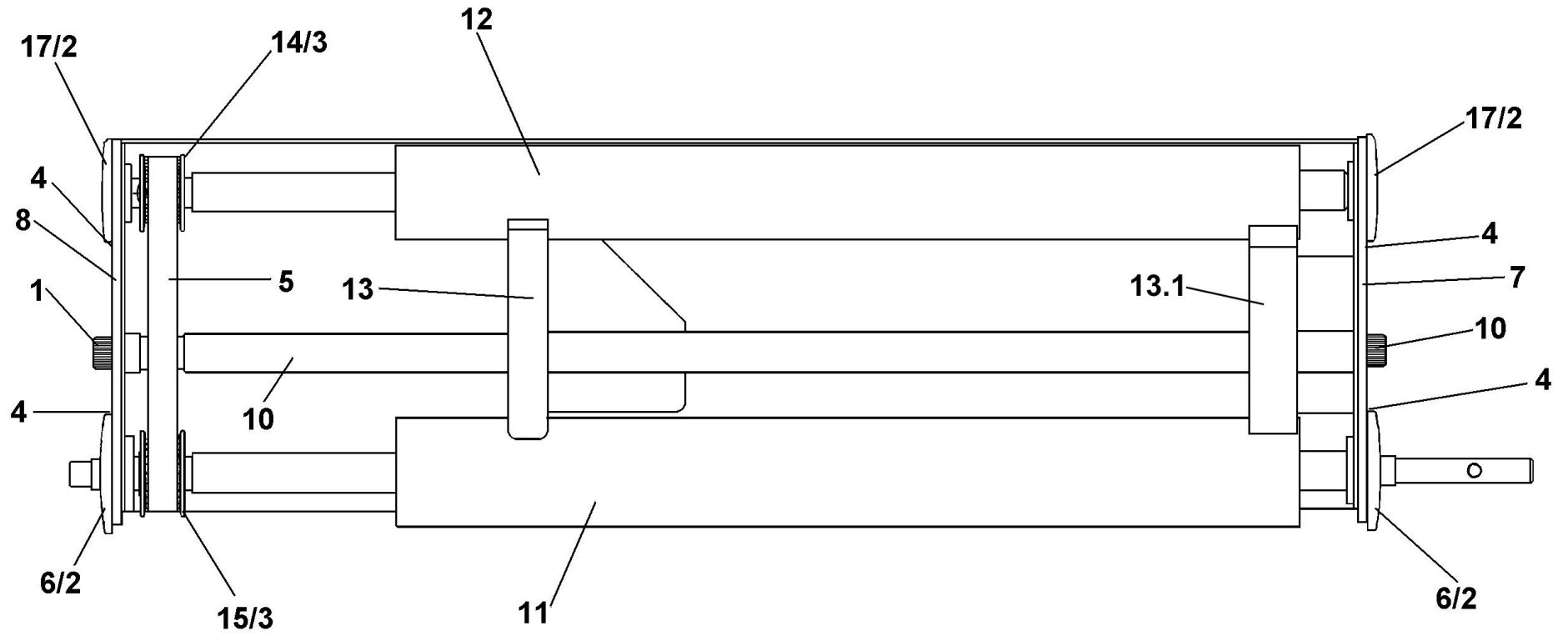
## GROUP 12

### Registration Devices

KEY	PART NO.	DESCRIPTION	QTY
1.	123-0612	SCREW, 6-32 x 1/4 PH PAN HD	4
2.	123-1178	SCREW, FH	4
3.	123-1340	SCREW, TRUSS HD 4-40 x 1/8	8
4.	123-1522	STEEL BALL	12
5.	123-2316	NYLON BUSHING	4
6.	35-106-52	RETAINER SPRING EXIT ASSEMBLY	4
6.1	35-106-53	EXIT RETAINER SPRING	4
6.2	33-115-51	EXIT WHEEL SHAFT	4
6.3	21-144-00	WHEEL ASSEMBLY	4
6.4	123-0114	WASHER, PLASTIC, 3/16 x 7/16 x 1/32	8
6.5	123-0976	SCREW, 4-40 x 1/4 PH, PAN HD	8
7.	41-103-22	REGISTRATION DEVICE FRONT SUBASSEMBLY	1
8.	41-103-24	REGISTRATION DEVICE PLATE, RIGHT HAND	1
9.	41-103-27	REGISTRATION DEVICE BAR	2
10.	41-103-28	REGISTRATION DEVICE BLOCK	2
11.	41-103-32	REGISTRATION DEVICE REAR SUBASSEMBLY	1
12.	41-103-34	REGISTRATION DEVICE PLATE, LEFT HAND	1

# GROUP 13

## Applicator Head



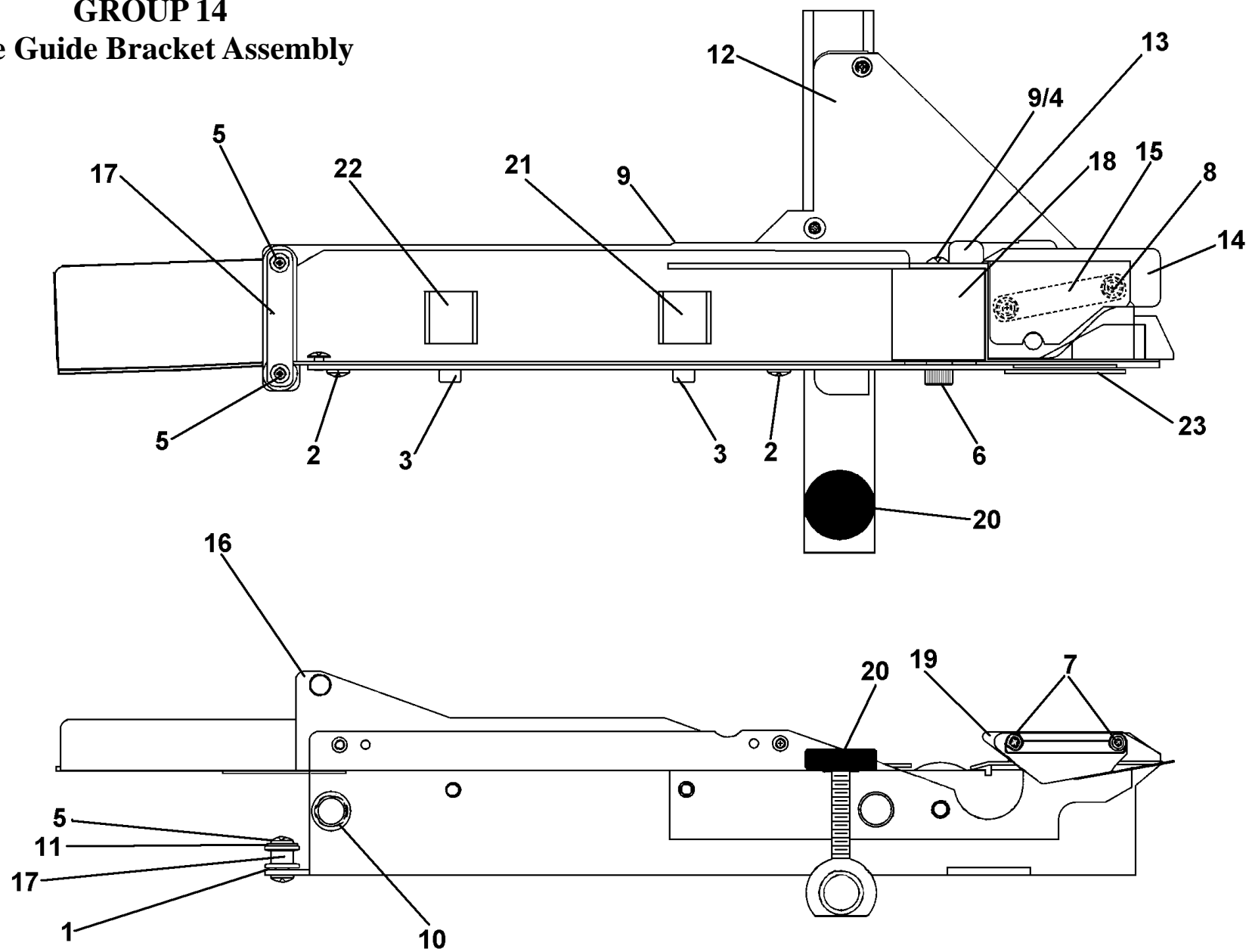
## GROUP 13

### Applicator Head

KEY	PART NO.	DESCRIPTION	QTY
	<b>41E-106-01</b>	<b>APPLICATOR HEAD ASSEMBLY (Includes Parts 1-17 below)</b>	<b>1</b>
1.	123-0163	SCREW, 1/4 x 28 x 1/2 SOC HD	2
2.	123-0275	SCREW, 6-32 x 1/4 OVAL PH HD	8
3.	123-0322	SET SCREW	2
4.	123-1204	SCREW, 6-32 x 1/4 BTN HD SOC CAP	4
5.	123-2357	BELT	1
6.	29-103-10	BALL BEARING HOUSING (29-103-10 + 123-1963)	2
7.	41E-106-03	SIDE PLATE ASSEMBLY, REAR	1
8.	41E-106-05	SIDE PLATE ASSEMBLY, FRONT	1
9.	41-106-07	HEAD CENTER PLATE WELDMENT	1
10.	41-106-10	APPLICATOR HEAD BAR	1
11.	41-106-12	EXIT ROLLER, TOP	1
12.	41-106-15	APPLICATOR ROLLER	1
13.	41-106-20	HOLD DOWN BRACKET, FRONT	1
13.1	41-106-21	HOLD DOWN BRACKET, REAR	1
14.	41-106-35	PULLEY, 14XL, EXIT ROLLER	1
15.	41-106-36	PULLEY, 12XL APPLICATOR ROLLER	1
16.	41-106-38	PULLEY, 24XL, TOP EXIT ROLLER	1
17.	90-103-52	BALL BEARING HOUSING (90-103-50 + 123-0035)	2
<b>18.</b>	<b>41-900-20</b>	<b>EXIT ROLLER HEAD SAFETY COVER KIT</b>	<b>1</b>
18A	41-106-52	HEAD SAFETY COVER	1
18B	123-1112	CAUTION LABEL	1
18C	123-1340	SCREW, 4-40 x 1/8 TRUSS HD, SS	2
18D	41-106-54	SAFETY COVER ARM	1



**GROUP 14**  
**Side Guide Bracket Assembly**

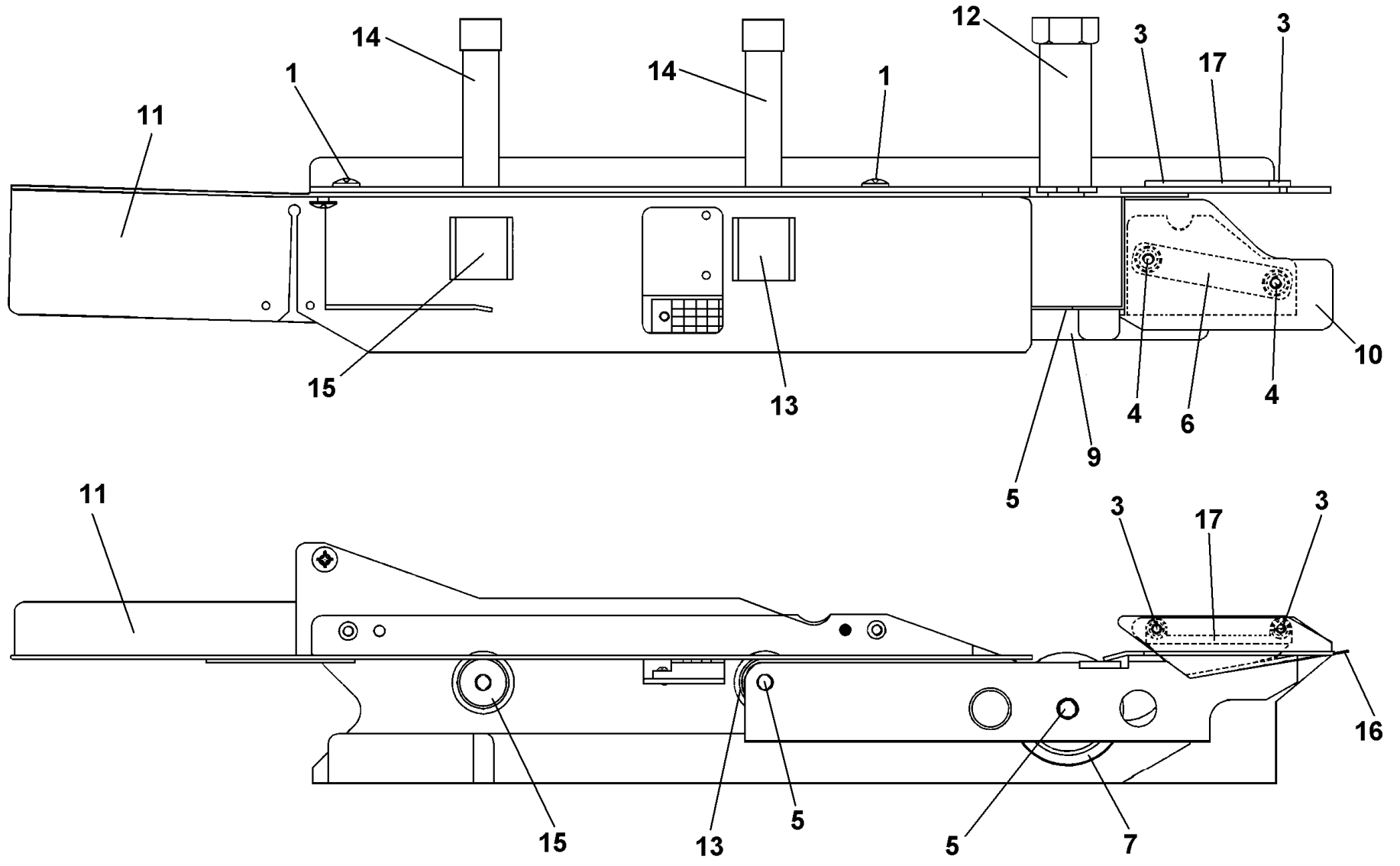


## GROUP 14

### Side Guide Bracket Assembly

KEY	PART NO.	DESCRIPTION	QTY
1	123-0114	WASHER, PLASTIC 3/16 x 7/16 x 1/32	2
2	123-0127	SCREW, 6-32 x 1/8 PH PAN HD	1
3	123-0185	SCREW, 10-32 x 3/8 SOC HD CAP	2
4	123-0312	WASHER	1
5	123-0461	SCREW, 6-32 x 3/16 PH RND HD SS	2
6	123-0524	SCREW, SOC HD	1
7	123-0975	SCREW, 4-40 x 1/4 PH FH SS	2
8	123-1178	SCREW	2
9	123-1206	SCREW, 10-32S x 1/4 BIN HD SOC CAP	2
10	123-1789	NYLON BUSHING	2
11	25-133-43	EXIT BELTS GUIDE SLEEVE ASSEMBLY	2
12	41-107-04	SIDE GUIDE BRACKET SUBASSEMBLY	1
13	41-107-07	MEDIA SUPPORT HOLDER, FRONT	1
14	41-107-08	MEDIA SUPPORT, FRONT	1
15	41-107-09	MEDIA SUPPORT DOUBLE NUT	1
16	41-107-12	SIDE GUIDE FRONT ASSEMBLY	1
17	41-107-14	BELT GUIDE BRIDGE	1
18	41-107-19	BELT WHEEL ASSEMBLY (w/o 41-107-18)	1
19	41-107-35	TAB BRACKET WELDMENT	1
20	41-107-39	THUMBSCREW	1
21	41-108-19	BELT SUPPORT STUD #2 ASSEMBLY	1
22	41-108-22	BELT SUPPORT STUD #1 ASSEMBLY	1
23	41-108-30	TAB FORMING NUT	1

**GROUP 15**  
**Rear Guide Bracket**

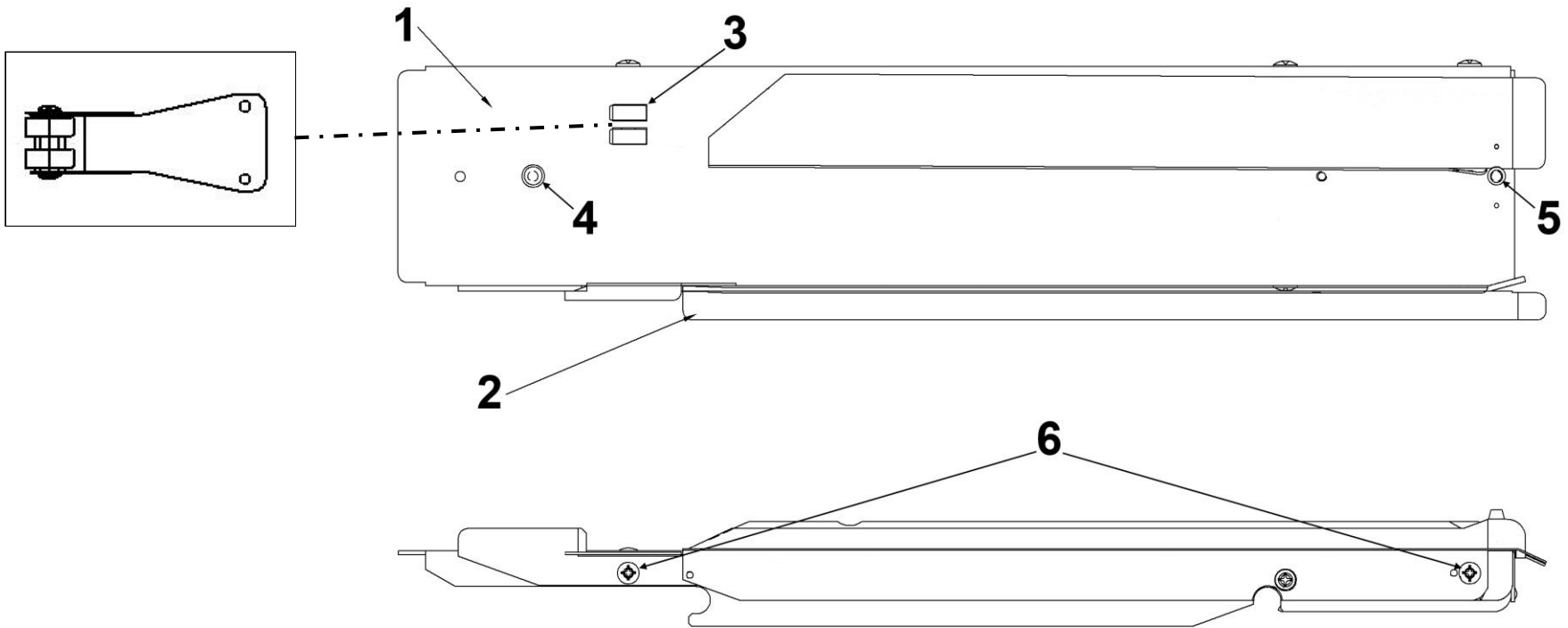


## GROUP 15

### Rear Guide Bracket

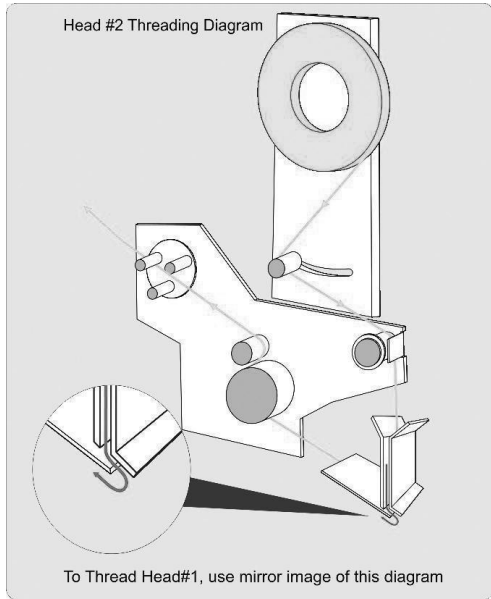
KEY	PART NO.	DESCRIPTION	QTY
1	123-0127	SCREW, 6-32 x 1/8 PH PAN HD	2
2	123-0312	WASHER	1
3	123-0975	SCREW, 4-40 x 1/4 PH FH SS	2
4	123-1178	SCREW	2
5	123-1206	SCREW, 10-32 x 1/4 BIN HD SOC CAP	2
6	41-107-09	MEDIA SUPPORT DOUBLE NUT	1
7	41-107-19	BELT WHEEL ASSEMBLY (w/o 41-107-18)	1
8	41-108-04	SIDE GUIDE BRACKET REAR WELDMENT	1
9	41-108-07	MEDIA SUPPORT HOLDER, REAR	1
10	41-108-08	MEDIA SUPPORT REAR	1
11	41-108-10	SIDE GUIDE REAR, SUBASSEMBLY	1
12	41-108-17	BELT SUPPORT STUD #4 ASSEMBLY	1
13	41-108-19	BELT SUPPORT STUD #2 ASSEMBLY	1
14	41-108-20	BELT SUPPORT STUD #3 ASSEMBLY	2
15	41-108-22	BELT SUPPORT STUD #1 ASSEMBLY	1
16	41-108-23	TAB BRACKET WELDMENT, LEFT HAND	1
17	41-108-30	TAB FORMING NUT	1

**GROUP 16**  
**Narrow Media Guide Assembly**  
**Part # 41-105-39**



KEY	PART NO.	DESCRIPTION	QTY
	<b>41-105-39</b>	<b>NARROW MEDIA GUIDE ASSEMBLY</b> <b>Includes All Items Listed Below.</b>	
1	41-105-40	NARROW MEDIA SUPPORT ASSEMBLY	1
2	41-105-51	NARROW MEDIA SUPPORT #2 WELDMENT (Side Rail)	1
3	41-105-48	RETAINER SPRING ASSEMBLY	1
4	41-106-25	APPLICATOR HEAD STOPPER	1
5	41-105-46	NARROW MEDIA GUIDE	1
6	123-0612	SCREW, 6-32 x 1/4 PAN HD SS (Used to attach 41-105-51 to 41-105-40)	2

# GROUP 17 Labels



**WARNING**  
Adjust the Belt Guide **SLOWLY** only when the belt is moving. Mishandling will cause damage to the belt!



**1**  
**CAUTION**  
Disconnect Power before changing fuse. For continued protection against risk of fire, replace only with same type and rating of fuse.

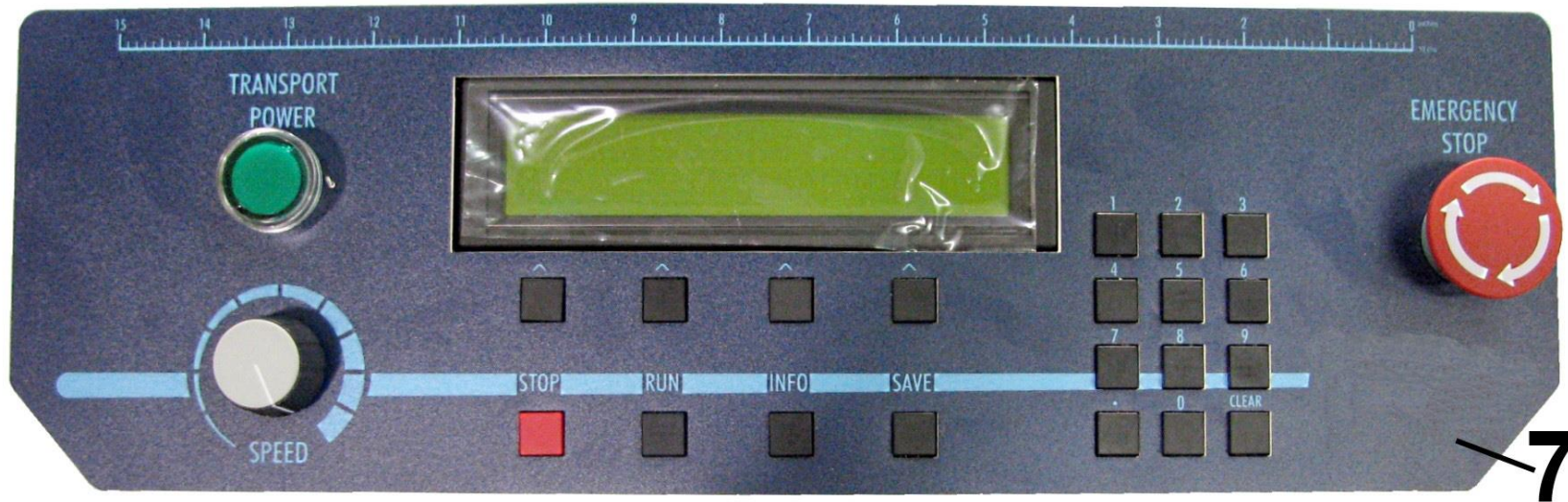
**5**  
**CAUTION**  
TO PREVENT ELECTRIC SHOCK DO NOT REMOVE COVER. NO USER SERVICEABLE PARTS INSIDE. REFER SERVICING TO QUALIFIED SERVICE PERSONNEL.

**2**  
**CAUTION**  
Exposed roller. Can cause personal injury. Keep hands, long hair, ties, jewelry and loose clothing away from this area.

**4**  
2.5A 250V  
SLOW BLOW  
**CAUTION**  
Disconnect Power before changing fuse. For continued protection against risk of fire, replace only with same type and rating of fuse.

**6**  
**3**

**WARNING**  
Exposed feed rollers can result in personal injury. Keep long hair, hands, jewelry and loose clothing away from moving parts.



**7**

**GROUP 17**  
**Labels**

KEY	PART NO.	DESCRIPTION	QTY
1	123-1033	DECAL, CAUTION WARNING	1
2	123-1112	LABEL, CAUTION EXPOSED ROLLER	2
3	123-1527	DECAL, WARNING	1
4	123-2382	LABEL, FUSE	1
5	20-100-63	DECAL, CAUTION	1
6	41-550-00	DECAL SHEET	1
7	41E-550-10	CONTROL PANEL LABEL	1

# Index

PART NO.	GROUP	KEY
123-0004	11	1
123-0006	6	1
123-0006	8	1
123-0015	11	2
123-0010	7	1
123-0010	9	1
123-0017	1	1
123-0017	2	1
123-0017	4	1
123-0017	4	24
123-0017	5A	1
123-0017	7	2
123-0017	9	2
123-0034	8	22
123-0034	10	1
123-0035	6	2
123-0035	8	2
123-0035	11	3
123-0050	11	4
123-0053	11	5
123-0063	10	2
123-0081	7	3
123-0081	9	3
123-0096	10	3
123-0114	4	23
123-0114	12	6.4
123-0114	14	1
123-0127	14	2
123-0127	15	1
123-0163	13	1
123-0185	1	2
123-0185	2	2
123-0185	3	1
123-0185	14	3
123-0237	5A	2
123-0252	1	3
123-0252	5A	3
123-0252	10	4
123-0274	5A	4
123-0275	1	4
123-0275	3	2
123-0275	4	2
123-0275	6	3
123-0275	8	3
123-0275	13	2
123-0311	7	4
123-0311	9	4
123-0312	6	4
123-0312	8	4
123-0312	14	4
123-0312	15	2
123-0322	1	5

PART NO.	GROUP	KEY
123-0322	3	14.1
123-0322	6	5
123-0322	8	5
123-0322	10	5
123-0322	13	3
123-0369	10	6
123-0432	6	6
123-0432	7	5
123-0432	8	6
123-0432	9	5
123-0434	2	3
123-0434	11	6
123-0461	5A	5
123-0461	14	5
123-0486	3	3
123-0486	4	8.1
123-0524	3	4
123-0524	14	6
123-0612	2	4
123-0612	3	5
123-0612	5A	6
123-0612	12	1
123-0612	16	6
123-0733	3	13.3
123-0757	6	7
123-0757	8	7
123-0757	10	7
123-0773	6	8
123-0773	8	8
123-0831	5A	7
123-0975	7	6
123-0975	9	6
123-0975	14	7
123-0975	15	3
123-0976	12	6.5
123-0984	3	6
123-0988	5A	8
123-0988	11	7
123-0990	1	6
123-0990	3	14.2
123-0990	6	9
123-0990	8	9
123-1023	2	6
123-1033	17	1
123-1064	6	13
123-1064	8	13
123-1112	13	18B
123-1112	17	2
123-1135	1	7
123-1135	5A	9
123-1136	1	8
123-1136	4	3
123-1136	11	8
123-1160	1	13.1
123-1160	3	13.5



PART NO.	GROUP	KEY
123-1161	7	7
123-1161	9	7
123-1178	12	2
123-1178	14	8
123-1178	15	4
123-1204	13	4
123-1206	1	9
123-1206	3	7
123-1206	7	8
123-1206	9	8
123-1206	11	9
123-1206	14	9
123-1206	15	5
123-1210	4	4
123-1210	6	10
123-1210	8	10
123-1313T	5A	10
123-1323	5A	11
123-1340	12	3
123-1340	13	18C
123-1367	5A	12
123-1398	5A	22.1
123-1457	10	8
123-1518	5A	13
123-1519	5A	14
123-1522	12	4
123-1527	17	3
123-1540A	5A	15
123-1604	5A	16
123-1650	3	13.2
123-1650	4	5
123-1680	6	11
123-1789	14	10
123-1790	1	10
123-1790	4	6
123-1828	6	12
123-1828	8	12
123-1949	10	9
123-1981	5A	18
123-2017	5A	19
123-2018	5A	20
123-2035	5A	29.1
123-2059	10	10
123-2068	10	11
123-2099	6	14
123-2099	8	14
123-2102	3	8
123-2103	3	13.7
123-2107	6	15
123-2107	8	15
123-2108	8	11
123-2116	6	16
123-2116	8	16
123-2129	5A	21
123-2316	12	5

PART NO.	GROUP	KEY
123-2357	13	5
123-2359	10	12
123-2366	4	7
123-2367	3	9
123-2368	1	11
123-2369	6	17
123-2369	8	17
123-2370	3	10
123-2380	11	10
123-2382	17	4
20-100-63	17	5
21-144-00	12	6.3
21-500-04	5A	22
25-133-43	14	11
26-102-20	5A	23
27-102-10	6	18
27-102-10	8	18
29-103-06	6	19
29-103-06	8	19
29-103-08	6	20
29-103-08	8	20
29-103-09	1	12
29-103-09	3	13.6
29-103-09	3	14.3
29-103-09	4	16.1
29-103-10	13	6
29-500-16	5A	24
33-108-16	6	21
33-112-15	6	22
33-115-51	12	6.2
33-122-21	6	23
33-122-21	8	23
33-125-08	7	9
33-125-08	9	9
33-125-24	6	24
33-125-24	8	24
33-500-33	5B	3
33-500-113	5B	1
33-500-135	2	7
33-500-135	5B	2
33-500-152	5A	25
33-500-540	5A	27
35-101-14	3	13.1
35-102-09	8	49
35-103-25	11	11
35-103-26	11	12
35-104-33	10	13
35-106-52	12	6
35-106-53	12	6.1
35-110-05	6	25
35-110-05	8	25
35-110-06	6	26
35-110-06	8	26
35-110-15	6	27
35-110-15	8	27

PART NO.	GROUP	KEY
35-110-23	6	28
35-110-23	8	28
35-110-24	6	29
35-110-24	8	29
35-116-08	6	30
35-116-08	8	30
35-500-08	5A	28
35-500-08	5B	4
35-500-11	5B	5
35-500-17	5B	8
35-500-18	5B	9
35-500-19	5B	10
35-500-21	5B	11
35-500-22	5B	12
35-500-23	5B	13
35-500-25	5B	14
35-500-28	5B	15
35-500-32	5B	16
35-500-111	5B	6
35-500-132	5B	7
35-500-180	5A	29
35E-117-04	2	5
40-109-11	6	52
40-109-11	8	52
41-100-25	3	12
41-101-05	3	13
41-101-08	3	14.4
41-101-11	1	13.2
41-101-11	3	15
41-101-11	4	8.2
41-101-22	3	16
41-101-22	4	8.3
41-102-02	4	10
41-102-07	4	11
41-102-13	4	12
41-102-14	2	11
41-102-16	1	17
41-102-17	2	12
41-102-18	4	10.1
41-102-19	4	11.1
41-102-20	1	18
41-102-21	1	19
41-102-26	1	20
41-102-31	1	30
41-103-04	11	13
41-103-05	11	14
41-103-12	3	18
41-103-13	2	13
41-103-18	11	15
41-103-20	11	16
41-103-21	4	13
41-103-22	12	7
41-103-24	12	8
41-103-27	12	9
41-103-28	12	10

PART NO.	GROUP	KEY
41-103-31	4	14
41-103-32	12	11
41-103-34	12	12
41-103-38	11	17
41-104-03	3	19
41-104-03	10	A
41-104-04	10	14
41-104-06	10	15
41-104-07	10	16
41-104-10	3	20
41-104-10	10	B
41-104-11	10	17
41-104-12	10	18
41-104-13	3	21
41-104-13	10	C
41-104-14	10	19
41-104-16	10	20
41-104-21	4	15
41-105-08	1	22
41-105-09	1	23
41-105-22	1	24
41-105-31	3	22
41-105-32	3	26
41-105-39	1	23
41-105-39	16	--
41-105-40	16	1
41-105-46	16	3
41-105-48	16	5
41-105-51	16	2
41-106-07	4	25
41-106-07	13	9
41-106-10	13	10
41-106-12	13	11
41-106-15	13	12
41-106-19	4	22
41-106-20	13	13
41-106-21	13	13.1
41-106-25	16	4
41-106-27	11	18
41-106-28	4	21
41-106-29	2	14
41-106-35	3	13.4
41-106-35	13	14
41-106-36	13	15
41-106-38	4	16.2
41-106-38	13	16
41-106-52	13	18A
41-106-54	13	18D
41-107-04	14	12
41-107-07	14	13
41-107-08	14	14
41-107-09	14	15
41-107-09	15	6
41-107-12	14	16
41-107-14	14	17

PART NO.	GROUP	KEY
41-107-19	14	18
41-107-19	15	7
41-107-27	4	18
41-107-33	3	23
41-107-35	14	19
41-107-39	14	20
41-108-04	15	8
41-108-07	15	9
41-108-08	15	10
41-108-10	15	11
41-108-17	3	24
41-108-17	15	12
41-108-19	14	21
41-108-19	15	13
41-108-20	3	25
41-108-20	15	14
41-108-22	14	22
41-108-22	15	15
41-108-23	15	16
41-108-30	14	23
41-108-30	15	17
41-110-05	6	54
41-110-08	1	26.1
41-110-11	6	31
41-110-11	8	31.1
41-110-12	6	31.1
41-110-12	8	31
41-110-17	1	26
41-110-21	6	32
41-110-21	8	32
41-110-22	6	33
41-110-22	8	33
41-110-26	6	53
41-110-26	8	53
41-110-27	6	55
41-110-27	8	55
41-110-34	6	34
41-110-34	8	34
41-110-35	6	35
41-110-35	8	35
41-111-03	6	36
41-111-11	6	37
41-111-15	6	38
41-111-21	6	39
41-111-21	8	39
41-112-18	6	40
41-113-04	6	41
41-113-06	6	41A
41-113-13	6	42
41-113-13	8	42
41-113-14	6	43
41-113-14	8	43
41-113-15	6	44
41-114-03	1	27
41-114-03	9	--

PART NO.	GROUP	KEY
41-114-04	9	10
41-114-06	9	11
41-114-07	7	19
41-114-07	9	19
41-114-08	9	12
41-114-12	7	13
41-114-12	9	13
41-114-13	7	14
41-114-13	9	14
41-114-15	7	15
41-114-15	9	15
41-114-23	1	28
41-114-23	7	--
41-114-24	7	10
41-114-26	7	11
41-114-28	7	12
41-114-33	7	16
41-114-35	9	16
41-120-02	1	29
41-120-02	8	--
41-120-05	8	54
41-120-07	8	56
41-120-17	6	45
41-120-17	8	45
41-121-03	8	36
41-121-11	8	37
41-121-15	8	38
41-122-20	8	40
41-122-25	8	21
41-123-04	8	41
41-123-06	8	41A
41-123-15	8	44
41-500-01	5B	18
41-500-02	5B	19
41-500-03	5B	20
41-500-04	5B	21
41-500-05	5B	22
41-500-06	5B	23
41-500-07	5B	24
41-500-12	5A	30
41-500-12	5B	25
41-500-13	5B	26
41-500-14	5B	27
41-500-15	5B	29
41-500-16	5B	30
41-500-18	5A	31
41-500-18	5B	31
41-500-18	6	46
41-500-19	5A	32
41-500-19	5B	32
41-500-19	8	46
41-500-20	5B	33
41-500-21	5B	36
41-500-24	5B	37
41-500-26	5B	38

PART NO.	GROUP	KEY
41-500-27	5B	39
41-500-30	5A	33
41-500-31	5B	40
41-500-33	5B	41
41-500-34	5B	42
41-500-35	5B	43
41-500-39	5B	44
41-500-44	5B	17
41-500-78	5A	34
41-500-78	5B	45
41-500-78	8	48
41-500-79	5A	35
41-500-79	5B	46
41-500-79	6	48
41-500-80	5B	47
41-500-81	5B	48
41-500-145	5B	28
41-500-201	5A	36
41-500-201	5B	34
41-500-201	6	47
41-500-202	5A	37
41-500-202	5B	35
41-500-202	8	47
41-500-505	5A	26
41-550-00	17	6
41-550-15	17	8
41-565-10	5A	17
41-900-20	13	18
41E-100-04	2	8
41E-100-04	3	11
41E-100-04	4	8
41E-100-06	2	9
41E-100-16	1	14
41E-100-17	4	9
41E-100-22	2	10
41E-100-30	1	16
41E-105-07	1	21
41E-106-01	4	16
41E-106-01	13	--
41E-106-03	13	7
41E-106-05	13	8
41E-110-02	1	25
41E-110-02	6	--
41E-110-07	6	56
41E-110-14	1	25.1
41E-110-15	1	25.2
41E-120-15	1	29.1
41E-550-10	17	7
56-102-19	6	49
62-100-50	4	20
62-108-18	11	19
62-108-30	6	50
62-108-30	8	50
65-303-01	1	15
80-120-23	7	17

PART NO.	GROUP	KEY
80-120-23	9	17
90-103-52	6	51
90-103-52	8	51
90-103-52	13	17
90-106-11	7	18
90-106-11	9	18
94-124-14	10	21
95-100-32	2	15
97-500-230	5B	49
99-100-98	3	14.5
99-100-98	4	16.3

