

FORMAX[®]

FD 4170

Cut Sheet Burster

RCTVUMANUAL
FIRST EDITION

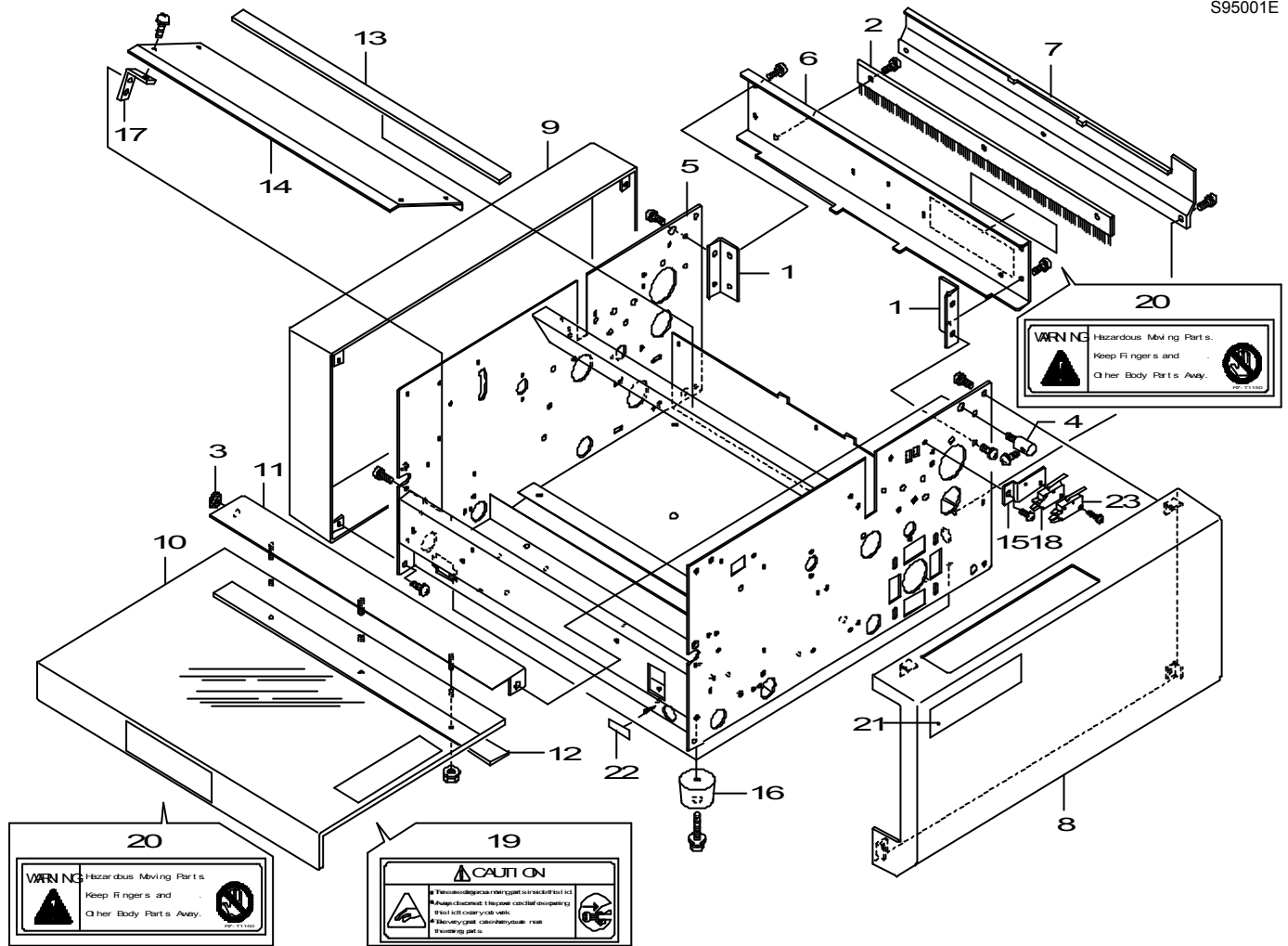
Table of Contents

■ PARTS LIST	1
1. Frame , Outer Cover	1
2. Stacker Section	2
3. Control Panel Section	3
4. Paper Feed Section 1 (Feed Tray 1)	4
5. Paper Feed Section 2 (Feed Tray 2)	5
6. Paper Feed Section 3 (Paper Separat)	6
7. Driving Section	7
8. Burst Section 1 (Upper Roller)	8
9. Burst Section 2 (Lower Roller)	9
10. Labels/Accessories	10
11. Electrical Parts	11
12. Wiring	12
■ RECOMMEND PARTS LIST	14
■ INDEX	16

1. Frame, Outer Cover

MODEL FD 4170

S95001E

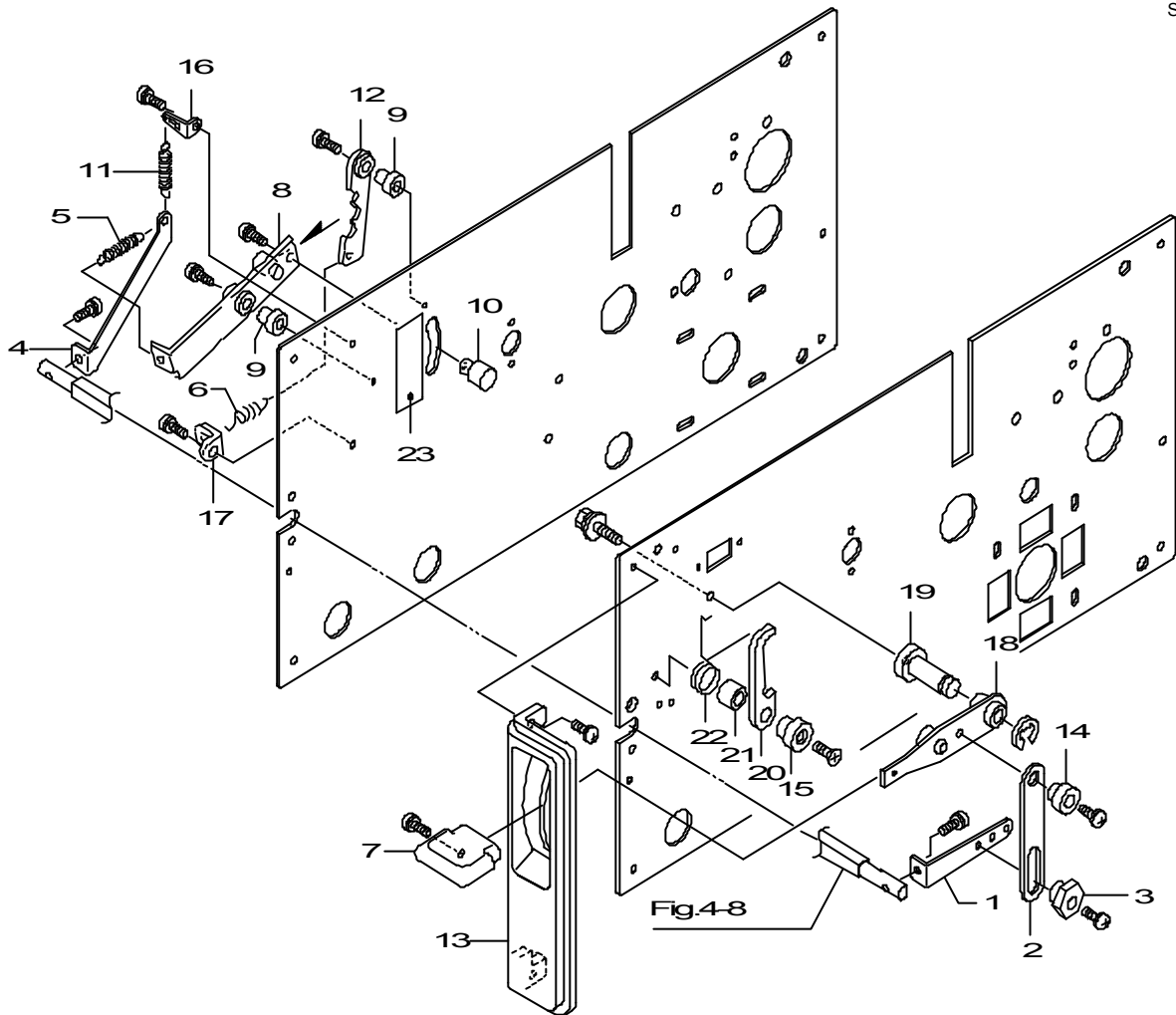


KEY No.	PARTS No.	DESCRIPTION	QTY	WEEE	REMARKS	I/C
1	C3-50270	Angle	2			
2	D5-51220	Static eliminating bar	2			
3	F2-22230	Z collar	1			
4	F2-22240	Shaft	1			
5	S9-H1011	Frame unit	1			
6	J1-50101	Rear plate	1		SET(6,20)	
7	J1-50140	Guide Plate	1			
8	J1-50170	Cover R	1			
9	J1-50180	Cover L	1			
10	J1-50201	Safety cover	1		SET(10,19,20)	
11	J1-50210	Angle	1			
12	J1-50220	Supporting plate	1			
13	J1-50270	Rubber plate	1			
14	J1-50341	Cover	1			
15	J1-50352	Switch angle	1			
16	49-51180	Rubber foot	4			
17	26-23731	Angle	4			
18	LA013	Micro switch (V-112-1C24)	1			
19	F2-60380	Label, WARNING	1		SET(10,19)	
20	R7-T1150	Label, WARNING	2		SET(6,20),(10,120V)	
21	S9-T1041	Label, 0.5 A Fi €	1			
22	019-5771	Label, breaker	1			
23	LA048	Micro switch	1			

5. Paper Feed Section 2 (Feed Tray 2)

MODEL FD 4170

S91001B

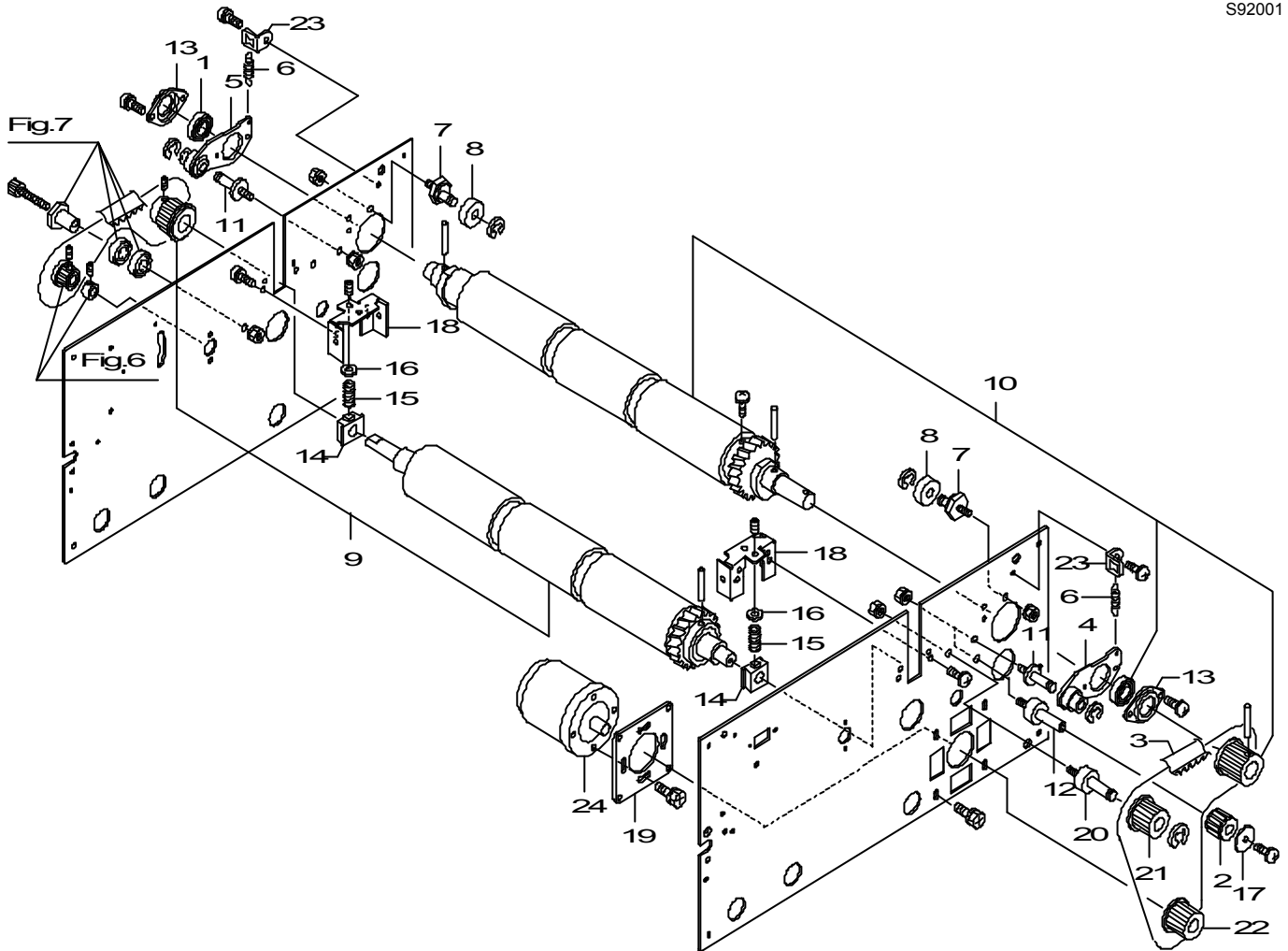


KEY No.	PARTS No.	DESCRIPTION	QTY	WEEE	REMARKS	I/C
1	C9-22260	Lever	1			
2	C9-22360	Link	1			
3	C9-22370	Eccentric shaft	1			
4	C9-22631	Lever	1			
5	C9-22651	Spring T	1			
6	F2-10380	Spring T	1			
7	S9-A1091	Knob	1			
8	G6-10481	Lever unit	1			
9	G6-10530	Shaft	2			
10	G6-10540	Knob	1			
11	G6-10590	Spring T	1			
12	G6-10631	Plate unit	1			
13	S9-A1081	Panel	1			
14	0Y4-08022	Y collar	1			
15	0Z4-08022	Z collar	1			
16	52-14380	Angle (L)	1			
17	52-61290	Angle (S)	1			
18	72-22310	Paper tray lever unit	1			
19	72-22360	Shaft	1			
20	72-22420	Regulation lever	1			
21	72-22460	Pillar	1			
22	72-22470	Spring To	1			
23	S9-A1131	Label, feed pressure	1		120V	

8. Burst Section 1 (Upper Roller)

MODEL FD 4170

S92001



KEY No.	PARTS No.	DESCRIPTION	QTY	WEEE	REMARKS	I/C
1	AA010	Ball bearing (6901ZZ)	1			
2	AB001	Needle roller bearing	1			
3	AJ046	Timing belt (100S5M400)	1			
4	F2-10250	Lever unit R	1			
5	F2-10260	Lever unit L	1			
6	F2-10380	Spring T	2			
7	F2-10491	Eccentric shaft	2			
8	F2-10510	Rubber bearing	2			
9	J1-20220	Roller assy 3	1			
10	J1-20330	Roller assy 4	1			
11	K9-10370	Shaft	2			
12	K9-10460	Shaft	1			
13	72-11100	Lid	2			
14	90-12130	Bush	2			
15	C3-10700	Spring C	2			
16	D1-10170	Plate	2			
17	F2-10470	Plate	1			
18	F4-10160	Bracket	2			
19	J1-21150	Plate	1			
20	J1-21170	Shaft	1			
21	J1-21190	Pulley unit	1			
22	J1-21240	Pulley unit	1			
23	52-61290	Angle (S)	2			
24	H5-X1010	Rotary solenoid	1			

RECOMMENDED PARTS LIST

INDEX

PARTS CATALOG INDEX

PARTS No.	SECTION	PAGE	KEY No.	REMARKS	PARTS No.	SECTION	PAGE	KEY No.	REMARKS
019-5771	1	1	22		D5-51220	1	1	2	
	10	10	6		D5-52120	2	2	3	
0X4-12050	2	2	13		D5-52240	2	2	8	
0Y4-08022	5	5	14		D5-74210	2	2	4	
0Z4-08022	5	5	15		D5-74220	2	2	5	
26-21320	4	4	9		DA005	9	9	10	
26-22520	4	4	10		E1-23660	6	6	3	
26-23350	6	6	12		E1-74371	3	3	1	
26-23450	9	9	16		E1-74381	3	3	2	
26-23731	1	1	17		E1-81080	11	11	3	120V
	6	6	13		F2-10250	8	8	4	
49-51180	1	1	16		F2-10260	8	8	5	
52-14380	5	5			F2-10380	5	5	6	
52-61290	5	5	17			8	8		
	8	8	23		F2-10470	8	8	17	
72-11100	8	8	13		F2-10491	8	8	7	
72-22310	5	5	18		F2-10510	8	8	8	
72-22360	5	5	19		F2-10592	9	9	4	120V
72-22420	5	5	20		F2-22230	1	1	3	
72-22460	5	5	21		F2-22240	1	1	4	
72-22470	5	5	22		F2-33371	9	9		D
72-23291	6	6	14		F2-60380	1	1	19	SET(10,19)
	9	9	13			10	10	1	120V
72-23630	6	6	15		F4-10160	8	8	18	
72-23710	6	6	16		F4-53220	10	10	7	
72-23760	6	6	17			2	2	15	
72-23770	6	6	18		F4-60300	10	10	8	120V
72-23850	6	6	19			11	11	1	120V
72-25310	6	6	20		G4-40090	7	7	6	
90-12130	8	8	14		G4-51100	3	3	3	
90-27181	4	4	12		G6-10180	4	4	2	
990-52392	2	2	14		G6-10230	4	4	4	
A12-23021	9	9	8		G6-10481	5	5	8	
A12-51051	6	6	1		G6-10530	5	5	9	
AA010	8	8			G6-10540	5	5	10	
AA024	9	9			G6-10590	5	5	11	
AA090	7	7			G6-10631	5	5	12	
AB001	8	8	2		G6-11040	6	6	4	
AJ046	8	8	3		G6-11051	6	6	5	
AJ047	7	7	2		G6-11060	6	6	6	
AJ048	7	7	3		G6-11131	6	6	7	
AL008	7	7	4		G6-51050	2	2	6	
C3-10700	8	8	15		H4-40030	7	7	7	
C3-50270	1	1	1		H4-40200	7	7	8	
C3-54120	2	2			H4-52210	2	2	9	
C6-56270	7	7	5		H5-X1010	8	8	24	
C6-89200	11	11	3	D	J1-10140	4	4	7	
C7-12691	9	9	2		J1-10170	4	4	6	EI
C7-12701	9	9	3		J1-10180	4	4	8	
C9-22260	5	5	1		J1-11020	6	6		
C9-22360	5	5	2		J1-11170	6	6	9	
C9-22370	5	5	3		J1-11220	6	6	10	
C9-22631	5	5	4		J1-11260	6	6	11	
C9-22651	5	5	5		J1-20020	9	9	5	
C9-23712	6	6	2		J1-20120	9	9	6	
CA033	9	9	17		J1-20180	7	7	9	
	9	9	18		J1-20220	8	8		
D1-10170	8	8	16		J1-20330	8	8	10	
D3-12750	2	2	2		J1-20630	9	9	7	
D5-50210	9	9	19		J1-21150	8	8	19	

PARTS CATALOG INDEX

PARTS No.	SECTION	PAGE	KEY No.	REMARKS	PARTS No.	SECTION	PAGE	KEY No.	REMARKS
J1-21170	8	8	20		S9-W2032	12	12	7	
J1-21190	8	8	21		S9-W2041	12	12	8	
J1-21240	8	8	22		S9-W2051	12	12	9	
J1-30030	7	7	10		S9-W2061	12	12	10	
J1-30050	7	7	11		S9-W2071	12	12	11	
J1-30190	7	7	12		S9-W2090	12	12	12	
J1-50101	1	1	6	SET(6,20)	S9-W2100	12	12	13	
J1-50140	1	1	7		S9-W2110	12	12	14	
J1-50170	1	1	8		S9-W2120	12	12	15	
J1-50180	1	1	9		S9-Y1030	10	10	9	120V
J1-50201	1	1	10	SET(10,19,20)	UE008	11	11	6	
J1-50210	1	1	11		XA003	11	11	7	
J1-50220	1	1	12		XB003	9	9	15	D
J1-50270	1	1	13		XC012	11	11	8	
J1-50301	9	9	14						
J1-50341	1	1							
J1-50352	1	1	15						
J1-50370	11	11	9						
J1-50380	11	11	10						
J1-51190	2	2	12						
J1-52022	3	3	4						
J1-X1010	7	7	14						
J1-X1020	11	11	4						
K9-10370	8	8	11						
K9-10460	8	8	12						
K9-40110	7	7	13						
LA013	1	1	18						
LA048	1	1	23						
LC022	11	11	5						
M5-24400	9	9	9						
R7-T1150	1	1	20	SET(6,20),(10,20)					
	10	10	2	120V					
R8-W1460	12	12	1						
S9-A1021	4	4	5						
S9-A1041	4	4	6	D,EA					
S9-A1051	4	4	3						
S9-A1061	4	4	1						
S9-A1071	4	4	11						
S9-A1081	5	5	13						
S9-A1091	5	5	7						
S9-A1111	10	10	3	120V					
	4	4	13	120V					
S9-A1131	10	10	4	120V					
	5	5	23	120V					
S9-B2011	9	9	12						
S9-B2041	9	9	11						
S9-H1011	1	1	5						
S9-H5051	3	3							
S9-L1011	2	2	10						
S9-L1021	2	2	11						
S9-L1031	2	2	7						
S9-T1041	1	1	21	120V					
	10	10	5	120V					
S9-V3011	11	11	2	D					
	3	3	6						
S9-W1011	12	12	2						
S9-W1040	12	12	3						
S9-W1050	12	12	4						
S9-W2011	12	12	5						
S9-W2021	12	12	6						