

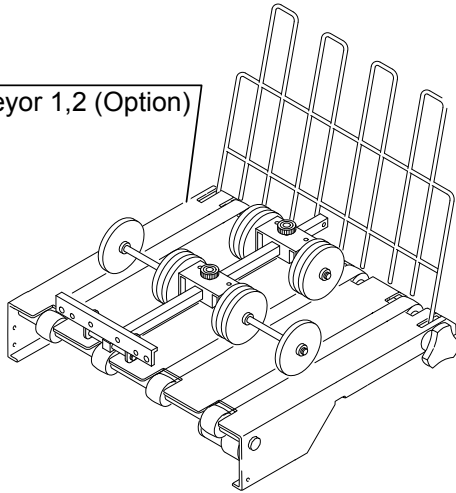
# FORMAX<sup>®</sup>

---

FD 574  
Tabletop Cut-Sheet Cutter

## ■ Assembly Location Diagram

**22. 23.**  
Straight conveyor 1,2 (Option)

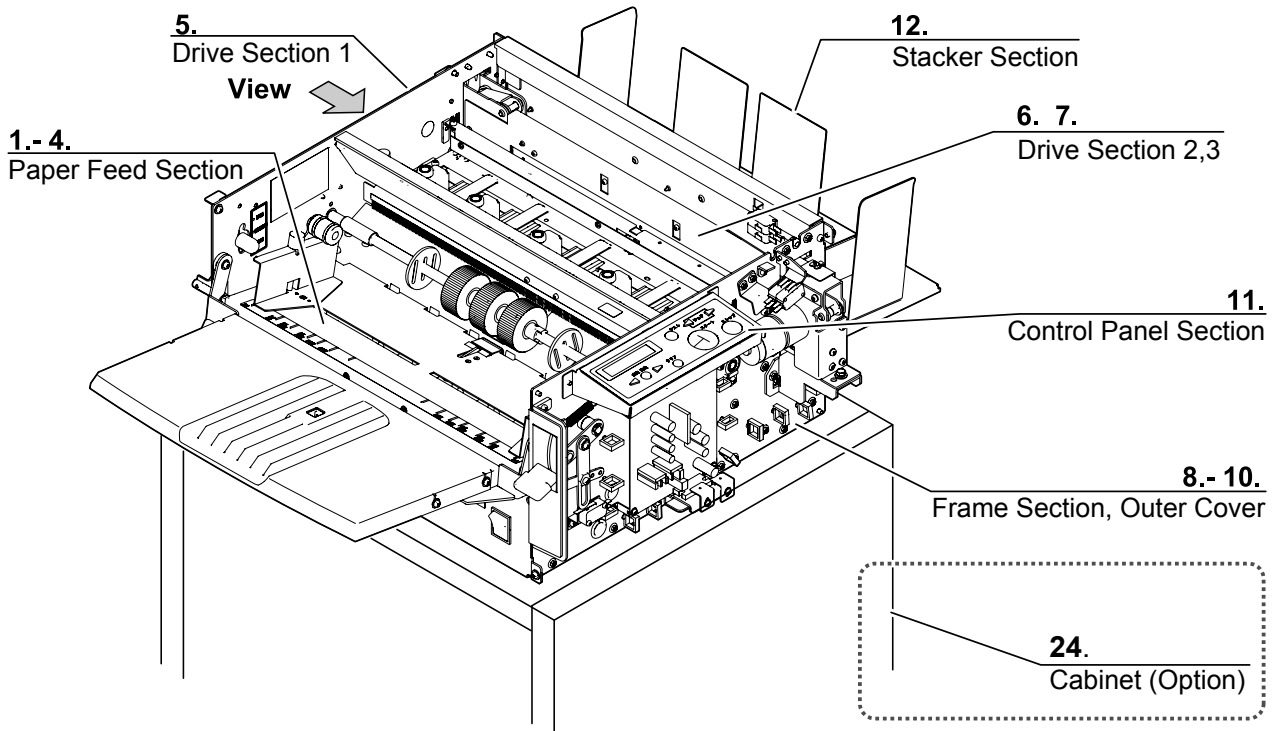


**18.**  
Center slitter unit (Option)

**19.**  
Perforator (Standard) unit (Option)

**20.**  
Perforator (Micro) unit (Option)

**21.**  
Attachment KIT (Option)



**13.**  
Safety Labels

**14.**  
Labels

**15.**  
Electrical Parts

**16.**  
Wiring

**17.**  
Accessories

# Table of Contents

■ PARTS LIST	1
1. Paper Feed Section 1 (Feed Tray)	1
1-1. UNIT/ASSY	2
2. Paper Feed Section 2 (Pressure Change )	3
3. Paper Feed Section 3 (Driving 1)	4
4. Paper Feed Section 4 (Driving 2)	5
5. Drive Section 1	6
6. Drive Section 2	7
7. Drive Section 3	8
8. Frame Section 1	9
9. Frame Section 2	10
10. Outer Cover	11
11. Control Panel Section	12
12. Stacker Section	13
13. Safety Labels	14
14. Labels	15
15. Electrical Parts	16
16. Wiring	17
17. Accessories	18
18. Center slitter unit (Option)	19
18-1. Unit/Assy	20
19. Perforator (Standard) unit (Option)	21
19-1. Unit/Assy	22
20. Perforator (Micro) unit (Option)	23
20-1. Unit/Assy	24
21. Attachment KIT (Option)	25
22. Straight conveyor 1 (Option)	26
23. Straight conveyor 2 (Option)	27
24. Cabinet (Option)	28
■ RECOMMEND PARTS LIST	30
■ INDEX	32

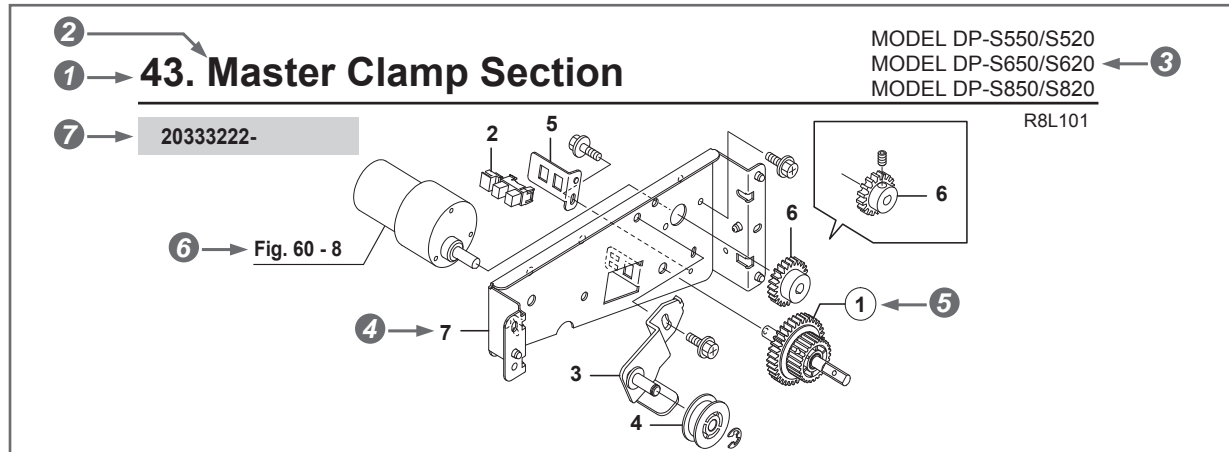
# Getting the most out of this catalog

## Finding the parts

### 1 Open the section page with the part you are looking for.

- The actual product is at hand, or you know the installing position : refer to the "Main part layout drawing" ➔ refer to the "Section page".
  - You know the part number: refer to the "INDEX" ➔ refer to the "Section page".
  - Time-change parts (for maintenance): refer to the "RECOMMEND PARTS LIST" ➔ refer to the "Section page".
- Find the component parts of the unit/assembly on the "Unit/Assy page" behind the "Section page".

## Using the Illustration



### 1 Item No.

Each part in the illustration is numbered.

- For the section that has different installation depending on the models, it is specified with an alphabet attached after the item No.
- " # " is shown after the item No. for the models with great change and without interchangeability. (The number attached after " # ", if any, describes the revision order)

### 2 Item name

The section name specified in the item.

In case the item is optional, (O.P) is attached after the item name.

### 3 MODEL

The Model name applied for the item.

### 4 KEY No.

The KEY No. in the illustration helps finding the part names in the list.

### 5 Circled KEY No.

Shows a unit/assembly part. Indicates the relation of unit/assembly and component part. When there is a circled KEY No. in the illustration, the component parts are as follows:

- Component parts are specified in a circled display.
- Unit/Assy page (component parts) are described in the next item.

### 6 Virtual illustration

If the part introduced in other item is attached, its Item No., KEY No., or the Item No. is indicated. (Displays for the main frame, etc. are omitted.)

### 7 Machine No.

Shown in case the mechanism is greatly changed and are no longer interchangeable from that machine number.

## Using the Parts list

	①	②	③	④	⑤	⑥	⑦
	KEY No.	PARTS No.	DESCRIPTION	Q'TY	WEEE	REMARKS	I/C
A →	①	R8-S0100	Cover assy	1			
	2	R8-T1100	Label , paper size	1		EA	
		R8-T3100	Label , paper size	1		EI	
	3	R8-K1230	Cover A	1	ABS	SET(3,4)	
	4	R8-T3010	Label , WARNING	1		SET(3,4)	
	5	R8-K1250	Inner cover	1	ABS		000111222- N=0

### ① KEY No.

KEY No. in the illustration helps finding the part names in the list.

The circled KEY No. is a unit/assembly part.

The blank **A** means that the KEY No. is the same as the KEY No. above. (Blank is used when there are differences in the specification, such as different model or shipping area, etc. or change in parts. Please refer to the "MODEL/REMARKS" columns.)

#### Using the Unit/Assy page

A unit/assembly part is marked with a circled number, and the number following "-" indicates a component part.

**Example :** ① ----- Unit/assembly part  
 -1 ----- Component part

### ② PARTS No.

- Clearly specify this "PARTS No." when ordering parts.
- The parts with "NPN" in the "PARTS No." column cannot be supplied.

#### Using the Unit/Assy page

The last digit of the PARTS No. indicates the design change. When the part is partially changed for the purpose of modification, etc., this design change digit may be changed. These changes are informed as Technical Information. Read it with care.

**Example :** R8-A1001  
 ↑ Design change digit

### ③ DESCRIPTION

- Clearly specify this Description when ordering parts.

### ④ Q'TY

- The number of parts used in the section illustrated.
- In the Unit/Assy page, the number of parts used per 1 unit or assembly is mentioned.

### ⑤ WEEE

Part material and so on are shown. (➡ refer to the "WEEE information".)

### ⑥ REMARKS

The part with these columns blank is applicable to all the machines.

- The model name is mentioned only when the part is exclusively designed for a certain model.
- In case there are differences in the specifications depending on the shipping area, they are marked with codes.

#### Examples of the code:

**EA** : English specification (A/B type paper)    **EI** : English specification (Inch type paper)  
**120V** : 120 V specifications                      **230V** : 230 V specifications  
**O.P** : Optional

**When there is SET display:**

Interchangeable when used with a set of related parts. Not interchangeable when used as a single item.

**Example :**

SET(8, 9, 12) Parts of the KEY No. 8, 9 and 12 are interchangeable when used as a set.

**Due to the design change, etc. the new parts and the old parts may not be interchangeable. In this case, the applicable machine number (9 digits) is shown.**

**Examples :**

- 000111111 Machine number (applicable from the initial lot to the machine number specified.)

000111111- Machine number (applicable from the machine number specified.)

000000101- 000111111 Machine number (applicable within the range of the machine numbers specified.)

- Parts without these indications are applicable to all the machines.

**7 (I/C) Interchangeability**

If the parts are changed, the following interchangeability codes are indicated on the new parts (N).

**Examples :** (N: new part, O: old part)

N = O : Interchangeable to both new part and old part

N ≠ O : Not interchangeable to either new part or old part

+ : Newly added part

- : Abolished part

**Using the RECOMMEND PARTS LIST**

①	②	③	④	⑤
PARTS No.	DESCRIPTION	Q'TY	PAGE	KEY No.
CA022	Photo microsensor	1	10	8
CA022	Photo microsensor	1	14	12
CA022	Photo microsensor	1	26	22
E1-99990	O-ring	2	2	① - 6

**① PARTS No.**

Replacement for main parts are shown in the ascending order of the "PARTS No.".

**② DESCRIPTION****③ Q'TY**

The number of the part used within the item.

**④ PAGE**

The corresponding section page of the part.

**⑤ KEY No.**

The KEY No. of the item using the part.

The circled KEY No. is the unit/assembly part.

The unit/assembly part is marked with a circled number.

The component parts are marked with numbers after " - ".

## Using the INDEX

①	②	③	④	⑤				
PARTS No.	SECTION	PAGE	KEY No.	REMARKS	PARTS No.	SECTION	PAGE	KEY No.
01-11110	15	18	8		E1-11110	10	10	8
02-11110	15	18	12	D	E1-22220	20	14	12
11-11100	22	26	22	EA,EI	E1-33330	30	26	22
99-99990	2	2	① - 6	D	E1-44440	40	2	① - 2
A1-Q0100	1	1	2	EA,EI	F1-Q0100	31	27	2
A1-Q0140	1	1	3		F1-Q0040	8	8	3

### ① PARTS No.

The PARTS No. from the "PARTS LIST" listed in the ascending order.  
 (Nothing is mentioned for the ones without the PARTS No., or the ones with NPN.)  
 The blank means that the PARTS No. is the same as the above.

### ② SECTION

The Item No. (SECTION No.) using the part.

### ③ PAGE

The corresponding section page of the part.

### ④ KEY No.

The KEY No. of the item using the part.  
 The circled KEY No. is the unit/assembly part.  
 The unit/assembly part is marked with a circled number.  
 The component parts are marked with numbers after " - ".

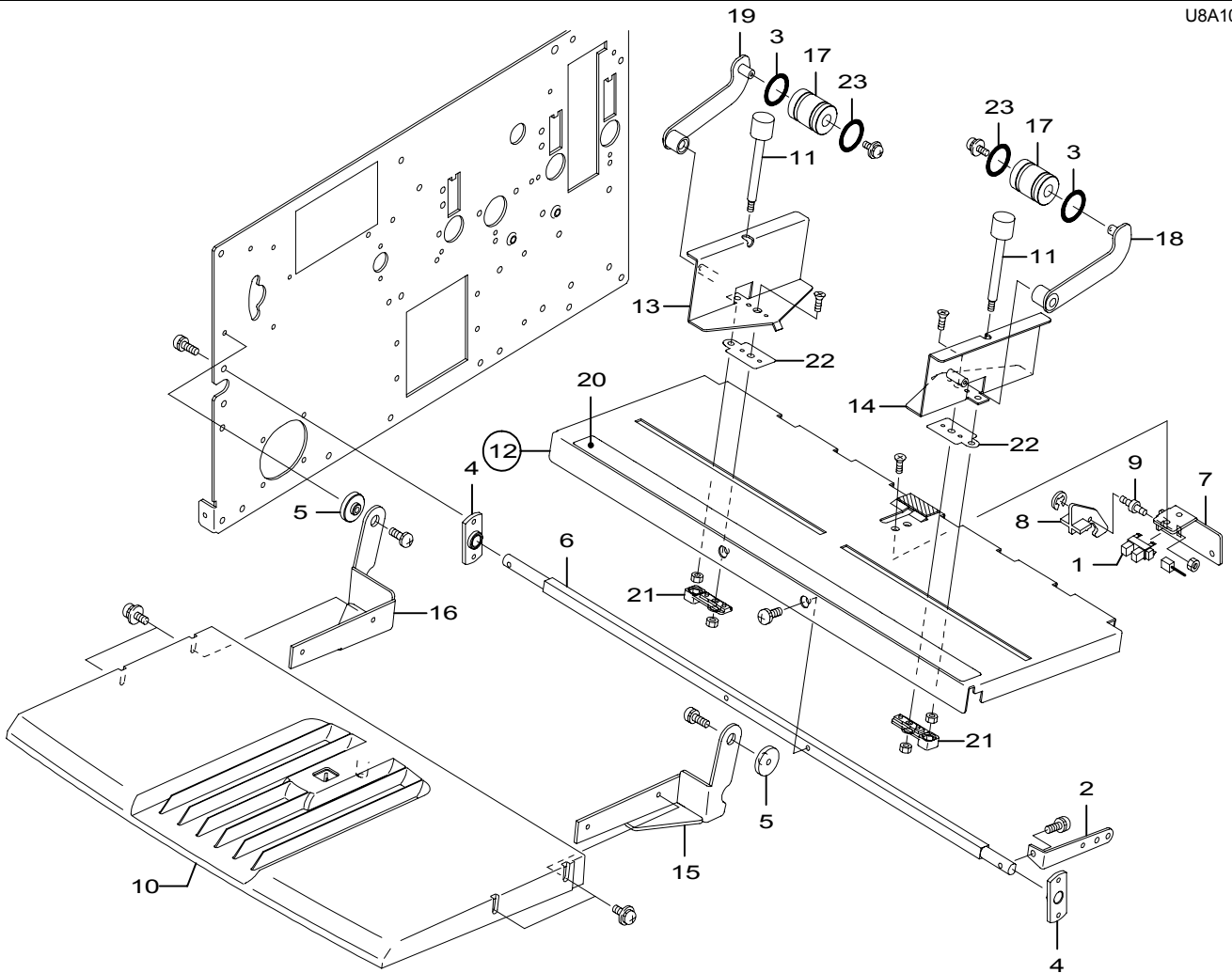
### ⑤ REMARKS

- The model name is mentioned only when the part is exclusively designed for a certain model.
- In case there are differences in the specifications depending on the shipping area, they are marked with codes.

# 1. Paper Feed Section 1 (Feed Tray)

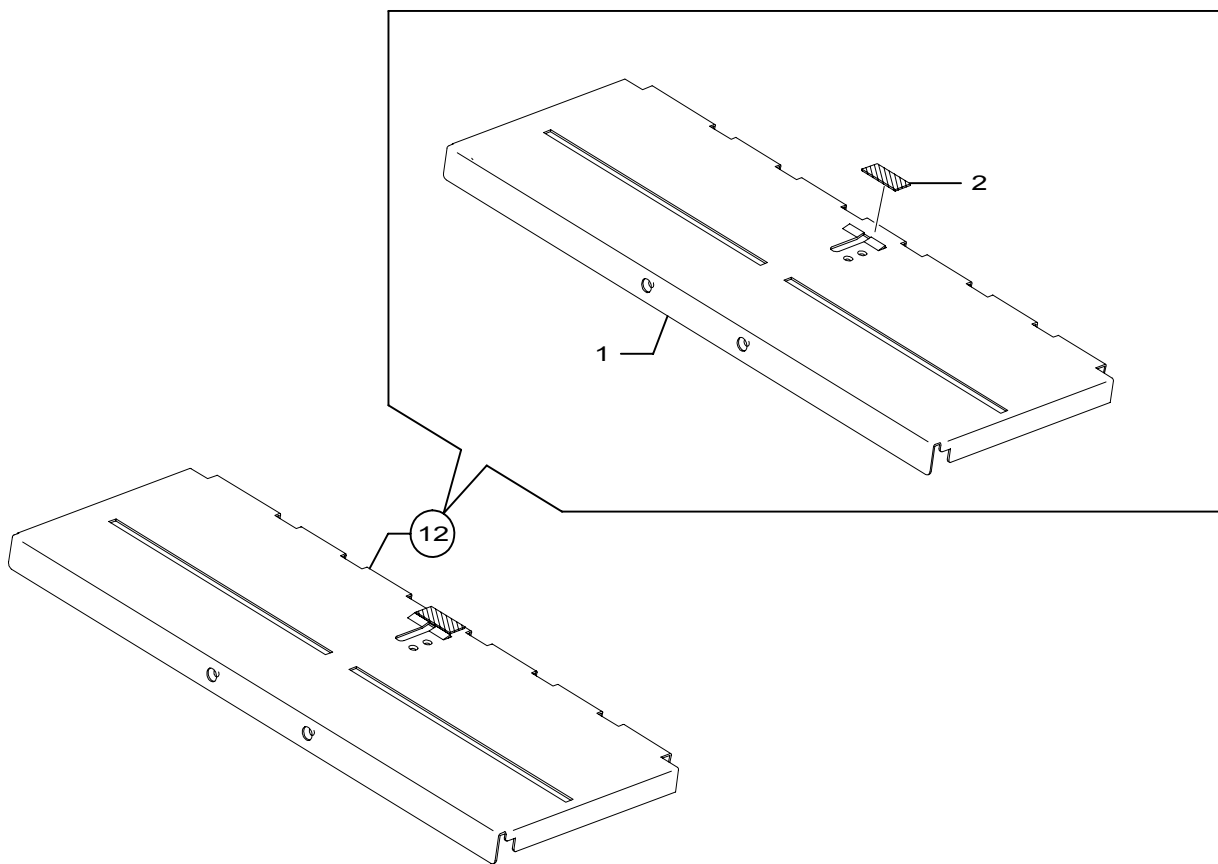
MODEL FD 574

U8A101



KEY No.	PARTS No.	DESCRIPTION	Q'TY	WEEE	REMARKS	I / C
1	CA065	PHOTO MICROSENSOR (GP1A173	1			
2	C9-22260	LEVER	1			
3	EA003	O-RING	2			
4	J8-B1081	BEARING	2			
5	M2-A1200	Z COLLAR	2			
6	M2-A1231	SHAFT	1			
7	M7-B1051	SENSOR BRACKET	1			
8	M7-B1170	ACTUATOR	1	POM		
9	M7-B1200	SHAFT	1			
10	R8-B1271	SUPPLEMENTAL PAPER TRAY	1	ABS		
11	S9-A1071	SET SCREW	2	ABS		
12	U8-S0001	FEED PLATE ASSY	1			
13	U8-A1021	PAPER FEED GUIDE L	1			
14	U8-A1031	PAPER FEED GUIDE R	1			
15	U8-A1041	BRACKET L	1			
16	U8-A1051	BRACKET R	1			
17	U8-A1072	WEIGHT	2		SET(17,23)	
18	U8-A1101	ARM R ASSY	1			
19	U8-A1141	ARM L ASSY	1			
20	U8-T1061	LABEL:PAPER SIZE(INCHI)	1		EI	
21	26-21320	GUIDE PLATE	2			
22	90-27181	PLATE	2			
23	EA017	O-RING (4D-AS-116)	2		SET(17,23)	

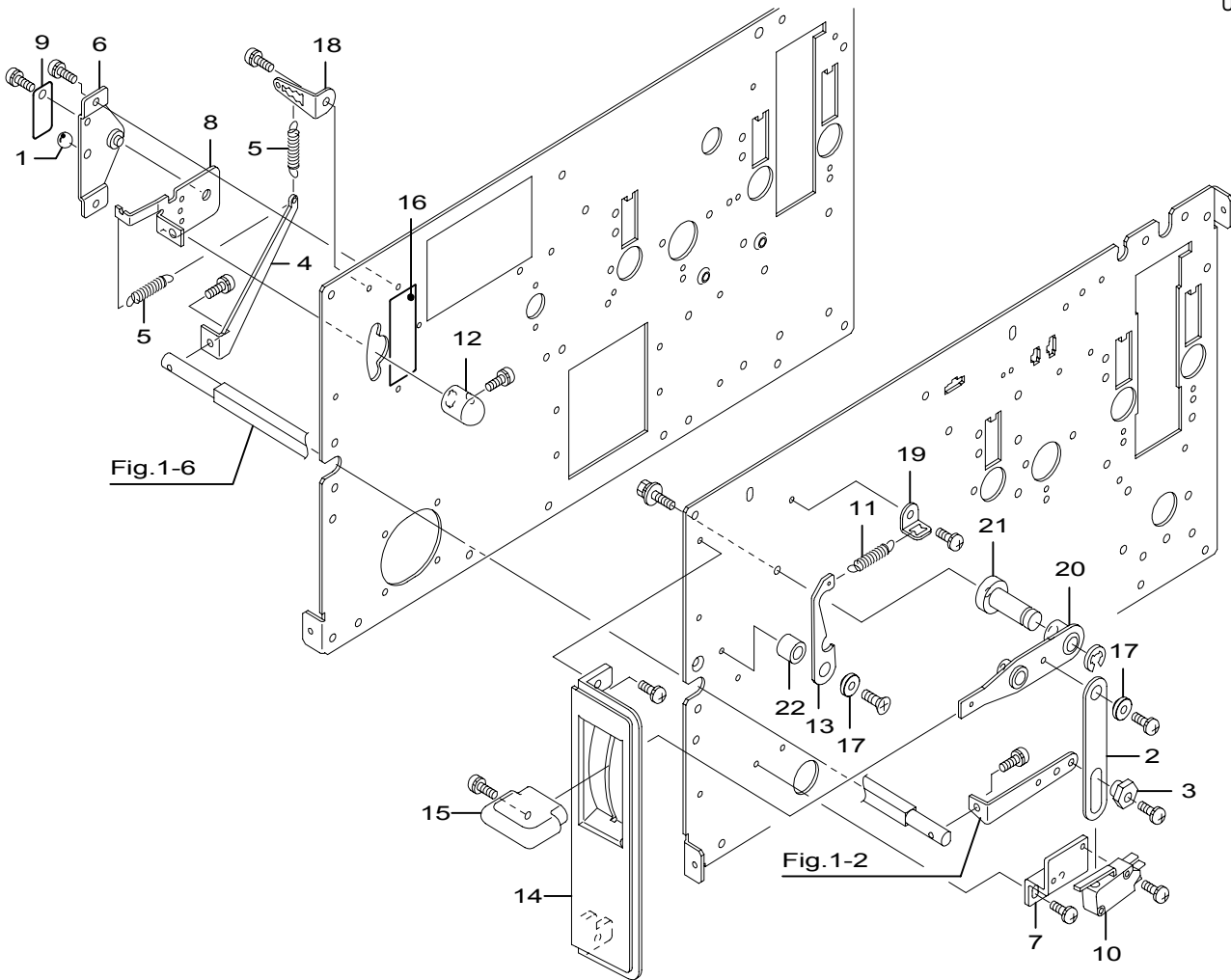




KEY No.	PARTS No.	DESCRIPTION	Q'TY	 WEEE	REMARKS	I / C
⑫	U8-S0001	FEED PLATE ASSY	1			
⑫-1	U8-A1011	FEED PLATE UNIT	1			
⑫-2	26-22520	SEPARATOR PLATE	1			

## 2. Paper Feed Section 2 (Pressure Change )

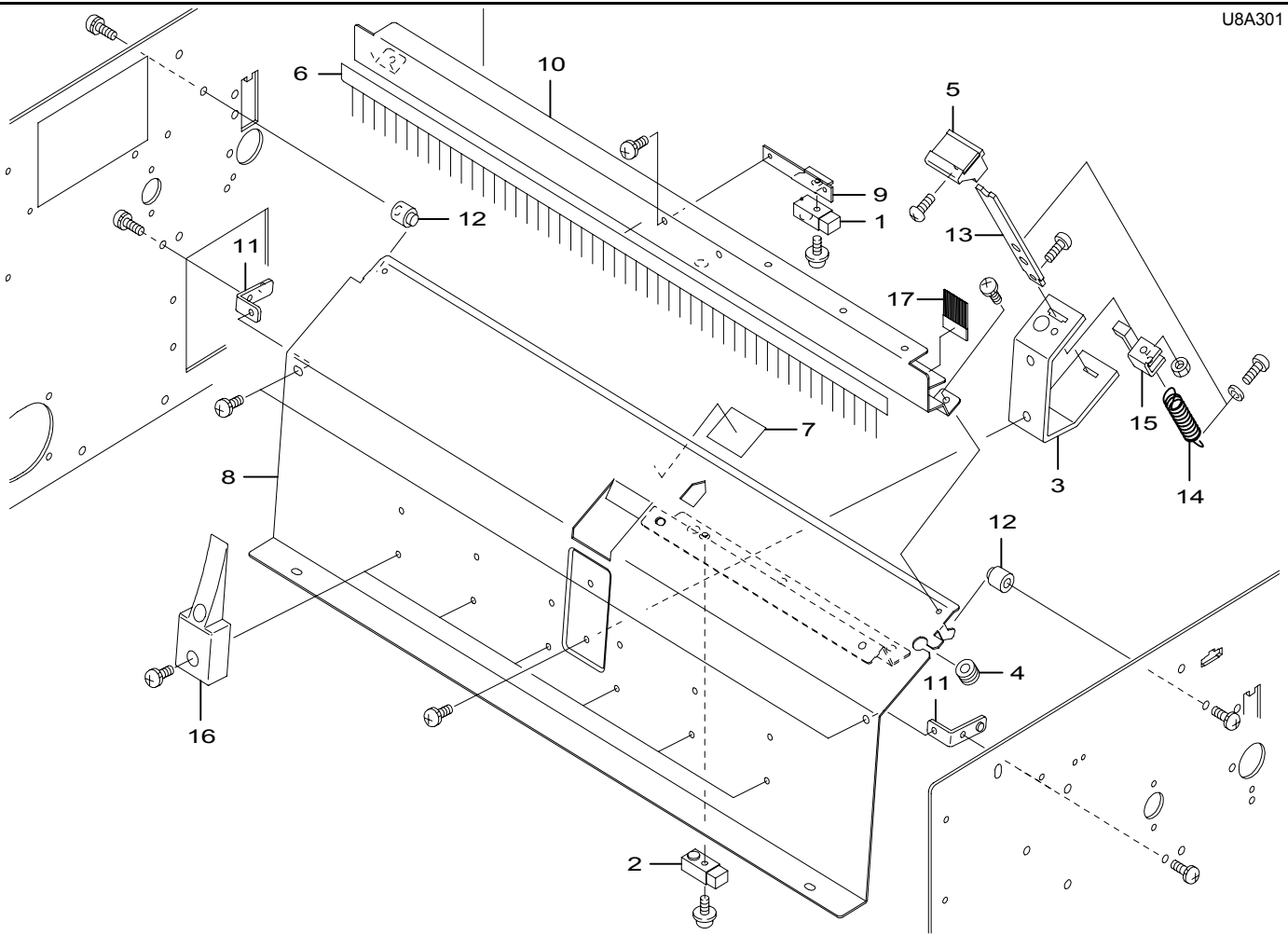
U8A200



KEY No.	PARTS No.	DESCRIPTION	Q'TY	WEEE	REMARKS	I / C
1	AA016	STEEL BALL	1			
2	C9-22360	LINK	1			
3	C9-22370	CAM SHAFT	1			
4	C9-22631	LEVER	1			
5	C9-22651	SPRING T	2			
6	J3-B6010	BRACKET UNIT	1			
7	J8-B2080	SWITCH BRACKET	1			
8	J8-B6011	LEVER	1			
9	J8-B6020	PLATE SPLING	1			
10	LA052	MICRO SWITCH (VX-012-1C23)	1			
11	M7-B1160	SPRING T	1			
12	S6-C3151	KNOB	1	ABS		
13	S6-C3462	HOOK	1			
14	S9-A1082	PANEL	1	ABS		
15	S9-A1091	KNOB	1	ABS		
16	U8-T4050	LABEL:FEED PRESSURE	1		EA,EI	
17	0Z4-08022	Z COLLAR	2			
18	52-14380	ANGLE	1			
19	52-61290	ANGLE	1			
20	72-22310	LEVER UNIT	1			
21	72-22360	SHAFT	1			
22	72-22460	PILLAR	1			

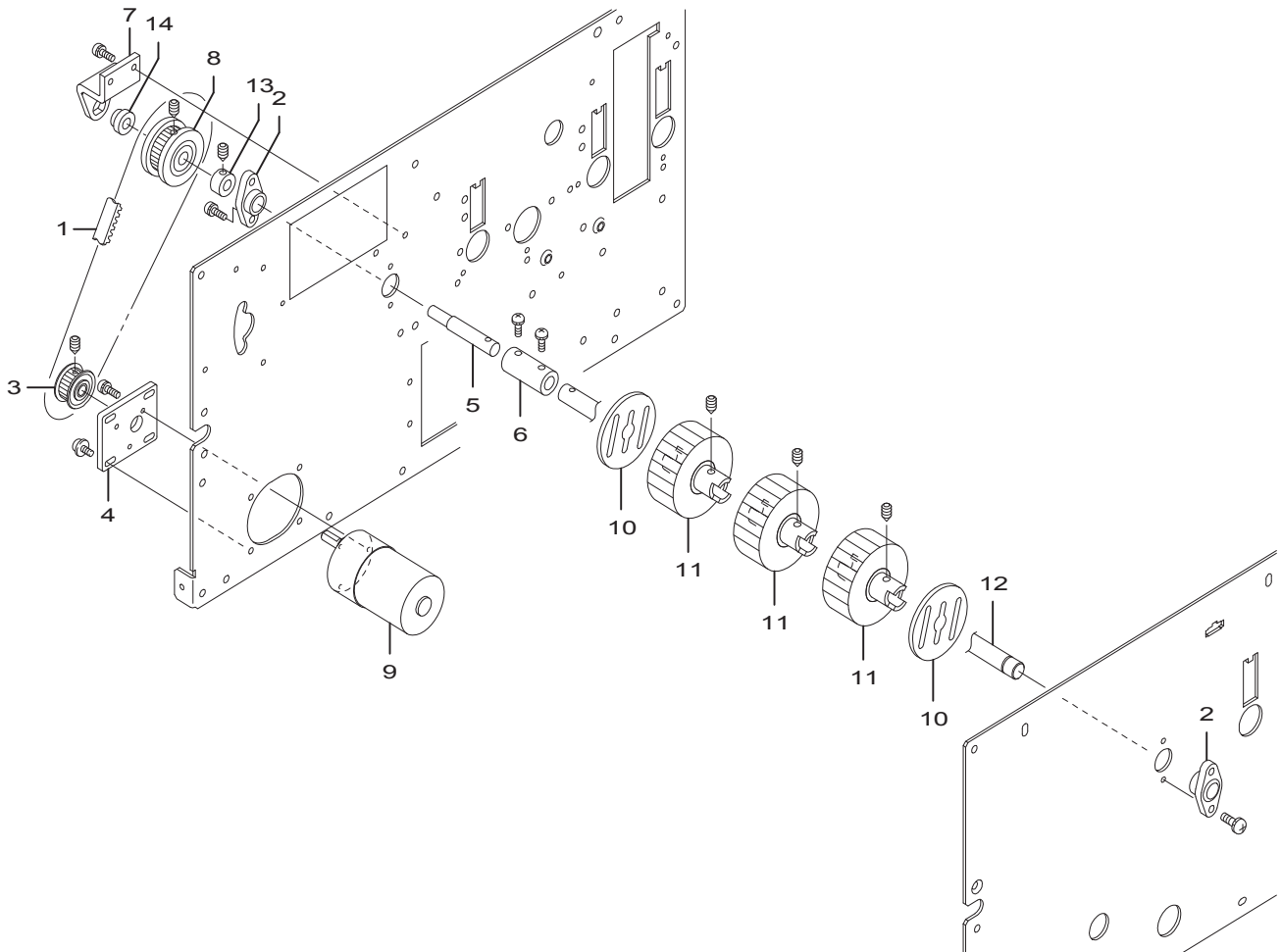
### 3. Paper Feed Section 3 (Driving 1)

U8A301



KEY No.	PARTS No.	DESCRIPTION	Q'TY	WEEE	REMARKS	I / C
1	CA054	PHOTO MICROSENSOR (KB1281-A)	1			
2	CA056	PHOTO MICROSENSOR (KB1284-A)	1			
3	C9-23712	SEPARATOR FRAME	1			
4	DA005	GROMMET (G-102)	1			
5	E1-23660	SEPARATOR BASE UNIT	1			
6	G6-10040	STATIC ELIMINATING BRUSH	1			
7	N5-C7160	SHEET	1			
8	U8-A3011	FEED INLET UNIT	1			
9	U8-A3051	SENSOR ANGLE	1			
10	U8-A3071	FEED INLET	1			
11	26-23731	ANGLE	2			
12	72-23630	STEP SCREW	2			
13	72-23710	SEPARATOR LEVER	1			
14	72-23760	SPRING T	1			
15	72-23770	HOLDING PLATE	1			
16	72-23850	RIB	6			
17	R8-B1530	ANTISTATIC BRUSH	1			

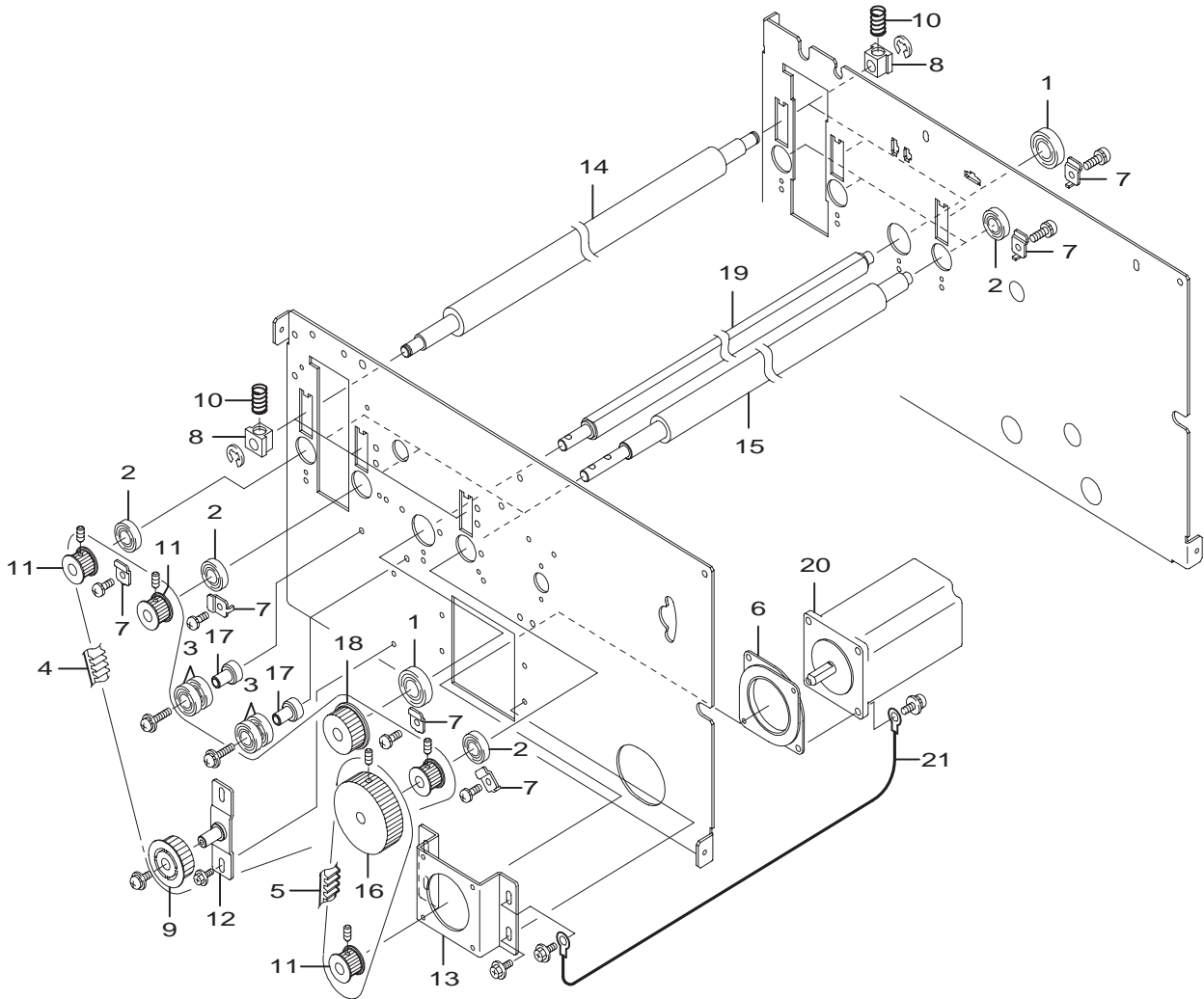
#### 4. Paper Feed Section 4 (Driving 2)



KEY No.	PARTS No.	DESCRIPTION	Q'TY	WEEE	REMARKS	I/C
1	AJ013	TIMING BELT (60S4.5M347)	1			
2	A12-51051	BEARING	2			
3	E6-30080	PULLEY UNIT	1			
4	F2-23520	MOTOR PLATE	1			
5	G6-11051	SHAFT	1			
6	G6-11060	JOINT	1			
7	G6-11131	PLATE	1			
8	G6-11170	TIMING PULLEY UNIT	1			
9	U8-X1030	MOTOR	1			N=0
10	N5-B4161	SUB ROLLER	2	POM		

# 5. Drive Section 1

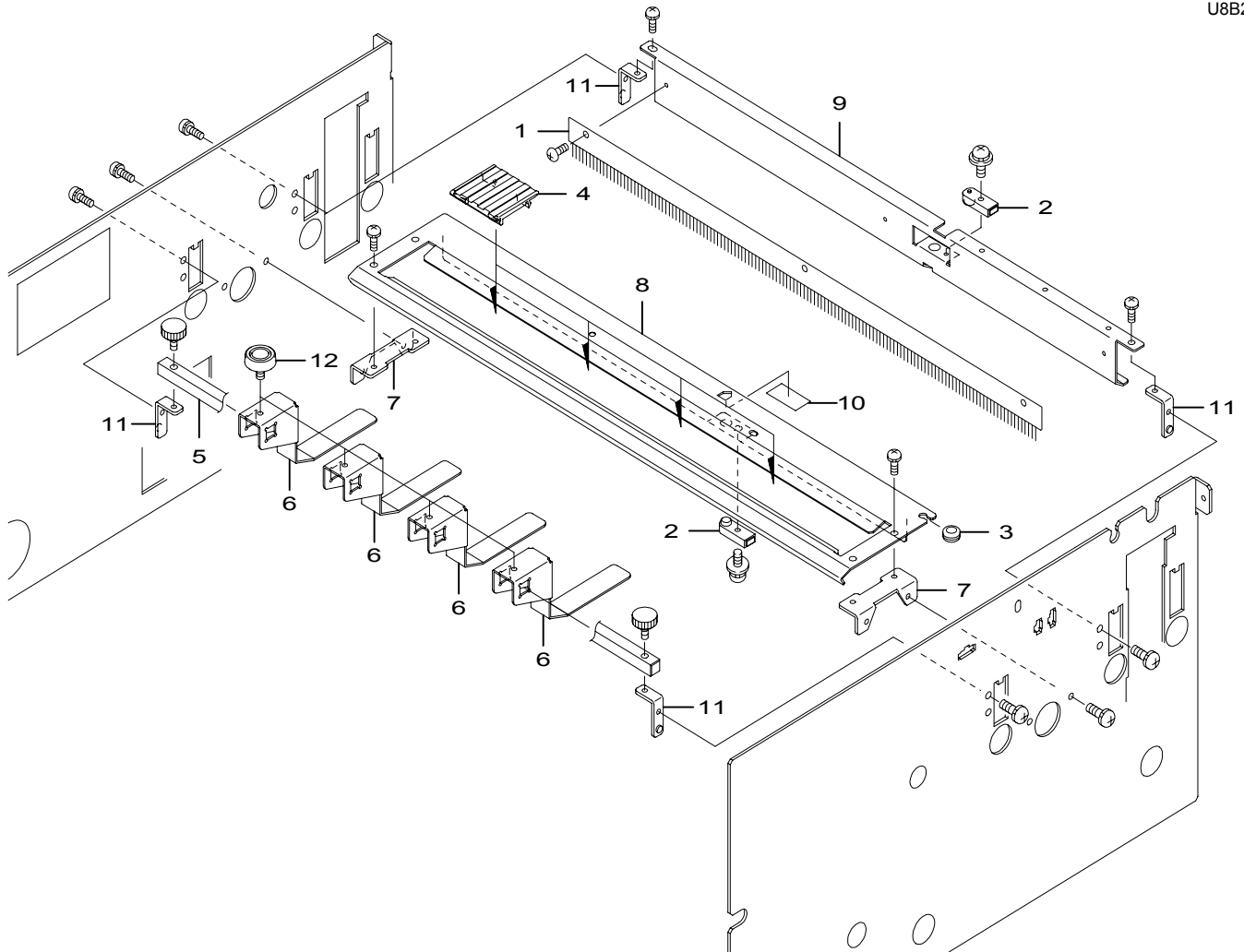
U8B100



KEY No.	PARTS No.	DESCRIPTION	Q'TY	WEEE	REMARKS	I / C
1	AA005	BALL BEARING (608ZZ)	2			
2	AA013	BALL BEARING (698ZZ)	6			
3	AA070	BALL BEARING (698ZZ-SUS)	4			
4	AJ263	TIMING BELT (100S3M564)	1			
5	AJ264	TIMING BELT (100S3M270)	1			
6	DA309	DAMPER (RF1502-A2)	1			
7	G6-20100	STOPPER	8			
8	L5-C3050	BEARING	6			
9	L5-F1040	PULLEY	1	POM		
10	L8-C1050	SPRING C	6			
11	M7-F1022	MOTOR PULLEY	4			
12	P6-C2031	TENSION ANGLE UNIT	1			
13	U8-B1011	MOTOR BRACKET	1			
14	U8-B1021	SPONGE ROLL	3			
15	U8-B1031	DRIVING ROLLER	3			
16	U8-B1041	PULLEY	1			
17	U8-B1061	SHAFT	2			
18	U8-B1071	TIMING PULLEY	1			
19	U8-G1021	S SHAFT	1			
20	U8-X1020	MOTOR (103H7128-5842)	1			
21	P9-W2351	GROUND LINE	1			

# 6. Drive Section 2

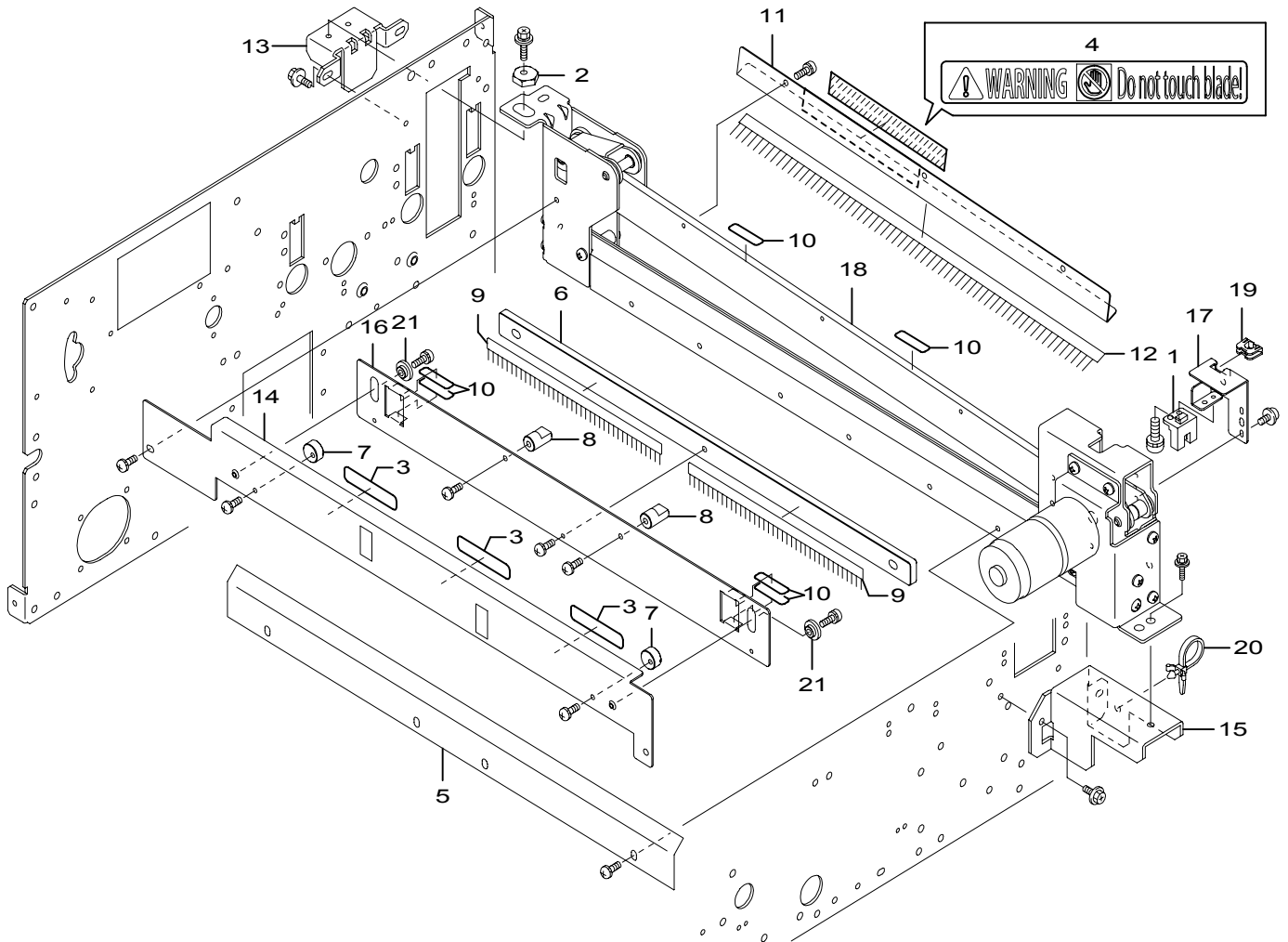
U8B201



KEY No.	PARTS No.	DESCRIPTION	Q'TY	WEEE	REMARKS	I / C
1	B3-50320	STATIC ELIMINATING BAR	1			
2	CA033	PHOTOINTERRUPTER (KB1241-NI)	1			
3	DA134	GROMMET (G-112)	1			
4	G6-31390	PLATE	4	POM		
5	M2-B2010	SQUARE SHAFT	1			
6	M2-B2021	TOP GUIDE	4			
7	M2-B2110	ANGLE	2			
8	U8-B2011	UNDER GUIDE PLATE UNIT	1			
9	U8-B2042	SENSOR PLATE	1			
10	U8-B2131	SHEET	1			
11	26-23731	ANGLE	4			
12	990-52392	KNOB SCREW UNIT	4	AS		

# 7. Drive Section 3

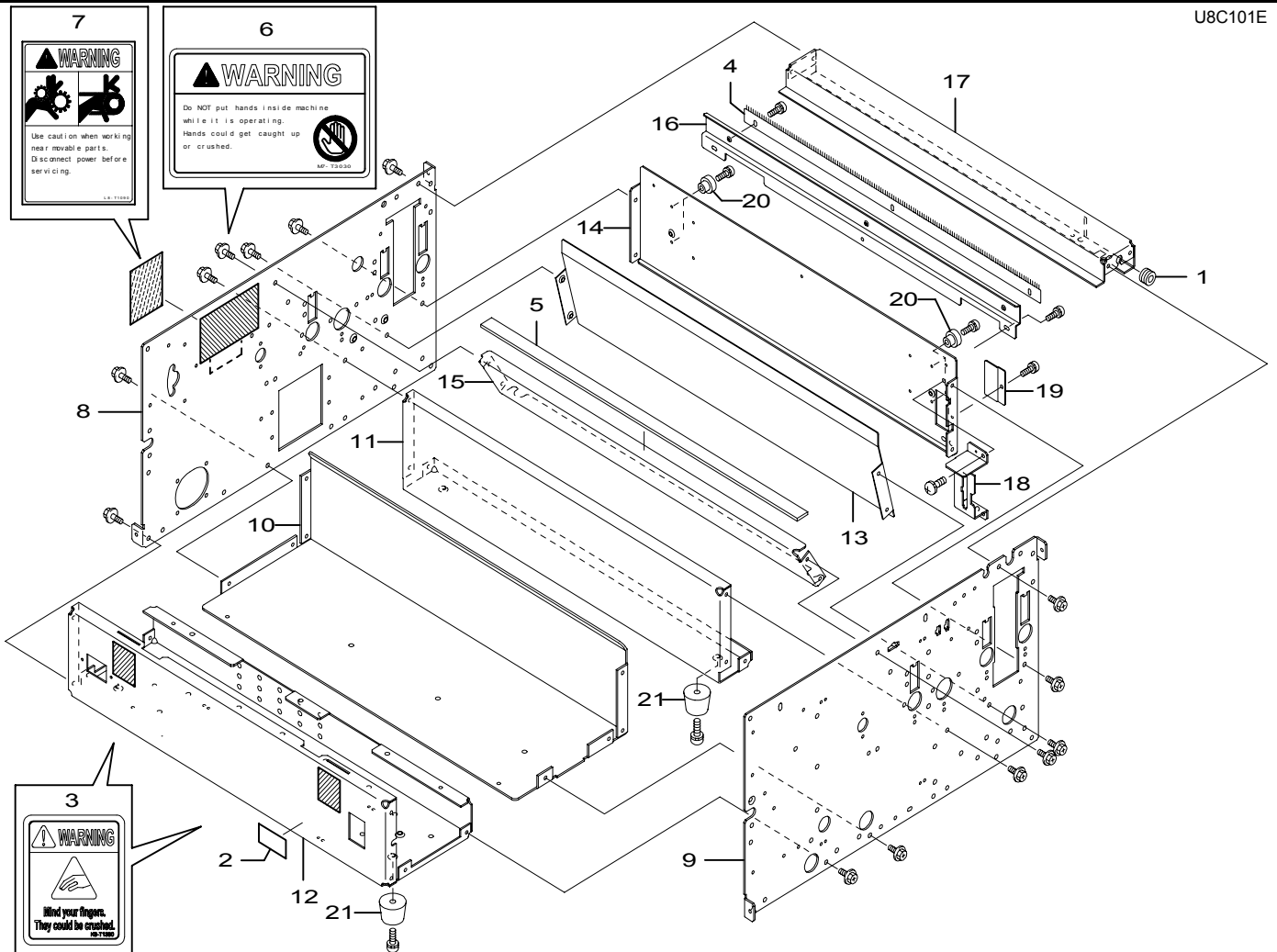
U8B202E



KEY No.	PARTS No.	DESCRIPTION	Q'TY	WEEE	REMARKS	I / C
1	CA046	PHOTO MICROSENSOR (KI1234-AA)	1			
2	F7-21650	CAM SHAFT	1			
3	J3-B1261	TEFLON SHEET	3			
4	L8-T1070	WARNING LABEL	1			
5	P9-J1173	LOWER GUIDE	1			
6	P9-J1311	PLATE	1	POM		
7	P9-J1350	ECCENTRIC SHAFT	2			
8	P9-J1361	STOPPER	2			
9	P9-J1420	STATIC ELIMINATING BRUSH	2			
10	Q6-J2050	SPONGE	4	CR		
11	U8-B2061	ANGLE	1		SET(4,11)	
12	U8-B2071	STATIC ELIMINATING BRUSH	1			
13	U8-B2081	BRACKET	1			
14	U8-B2091	BRACKET	1			
15	U8-B2101	BRACKET	1			
16	U8-B2111	SLIDE BRACKET	1			
17	U8-B2121	SENSOR BRACKET	1			
18	U8-X1011	CUTTER UNIT	1			
19	XC019	CORD CLAMP (EHP-6U)	1			
20	XC063	CLAMP (RSG-130-V0)	1			
21	OZ3-06018	Z COLLAR	2			

# 8. Frame Section 1

U8C101E

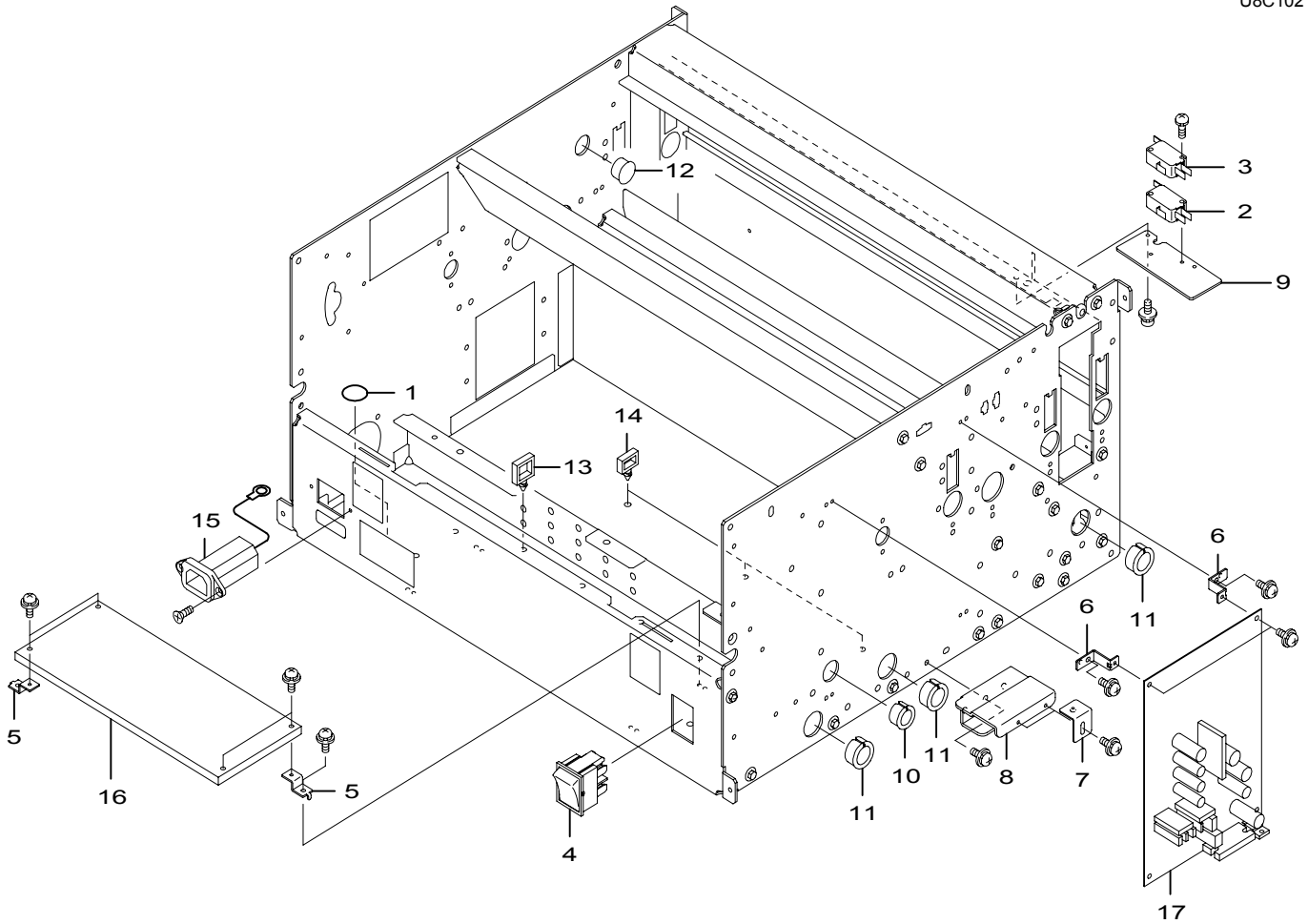


KEY No.	PARTS No.	DESCRIPTION	Q'TY	WEEE	REMARKS	I / C
1	DA225	GROMMET (G-100)	1			
2	E1-79380	LABEL FCC	1		120V	
3	K9-T1390	WARNING LABEL	2			
4	M2-C1160	STATIC ELIMINATING BRUSH	1			
5	M2-C1190	RUBBER PLATE	1			
6	M7-T3030	WARNING LABEL	1			
7	L8-T1090	WARNING LABEL	1			
8	U8-C1012	FRAME R	1		SET(6,7,8)	
9	U8-C1021	FRAME F	1			
10	U8-C1031	CENTER PLATE	1			
11	U8-C1041	CENTER PLATE	1			
12	U8-C1051	SUPPORT PLATE FRONT	1		SET(3,12)	
13	U8-C1061	SLIDE PLATE	1			
14	U8-C1071	SUPPORT PLATE BACK	1			
15	U8-C1081	PLATE UPPER	1			
16	U8-C1091	EXHAUST COVER	1			
17	U8-C1101	PLATE UPPER	1			
18	U8-C1131	CONNECTOR BRACKET	1			
19	U8-C1141	LID	1			
20	0Z3-06022	Z COLLAR	4			
21	49-51180	RUBBER FOOT	4			



## 9. Frame Section 2

U8C102



KEY No.	PARTS No.	DESCRIPTION	Q'TY	WEEE	REMARKS	I / C
1	F4-60300	LABEL GROUND	1			
2	LA048	MICRO SWITCH (VX-52-1A3)	1			
3	LA052	MICRO SWITCH (VX-012-1C23)	1			
4	LC033	LOCKER SWITCH (AJ8R2024BBCF)	1			
5	M7-K1140	ANGLE	4			
6	N5-K2200	ANGLE	4			
7	S7-M1391	ANGLE	2			
8	U8-C1111	HEAT SINK	1			
9	U8-C1121	PLATE	1			
10	XA002	BUSHING (OCB-625)	1			
11	XA003	BUSHING (OCB-750)	3			
12	XA021	HOLE PLUG	1			
13	XC040	WIRE SADDLE (PLWS-2U)	18			
14	XC055	WIRE SADDLE (PLWS-1U)	9			
15	R8-W1460	CABLE UNIT :TERMINAL PLATE	1			
16	UA058	SWITCHING POWER SUPPLY (ZWS	1			
17	U8-V5003	MAIN PCB UNIT	1			

# 10. Outer Cover

U8C200E

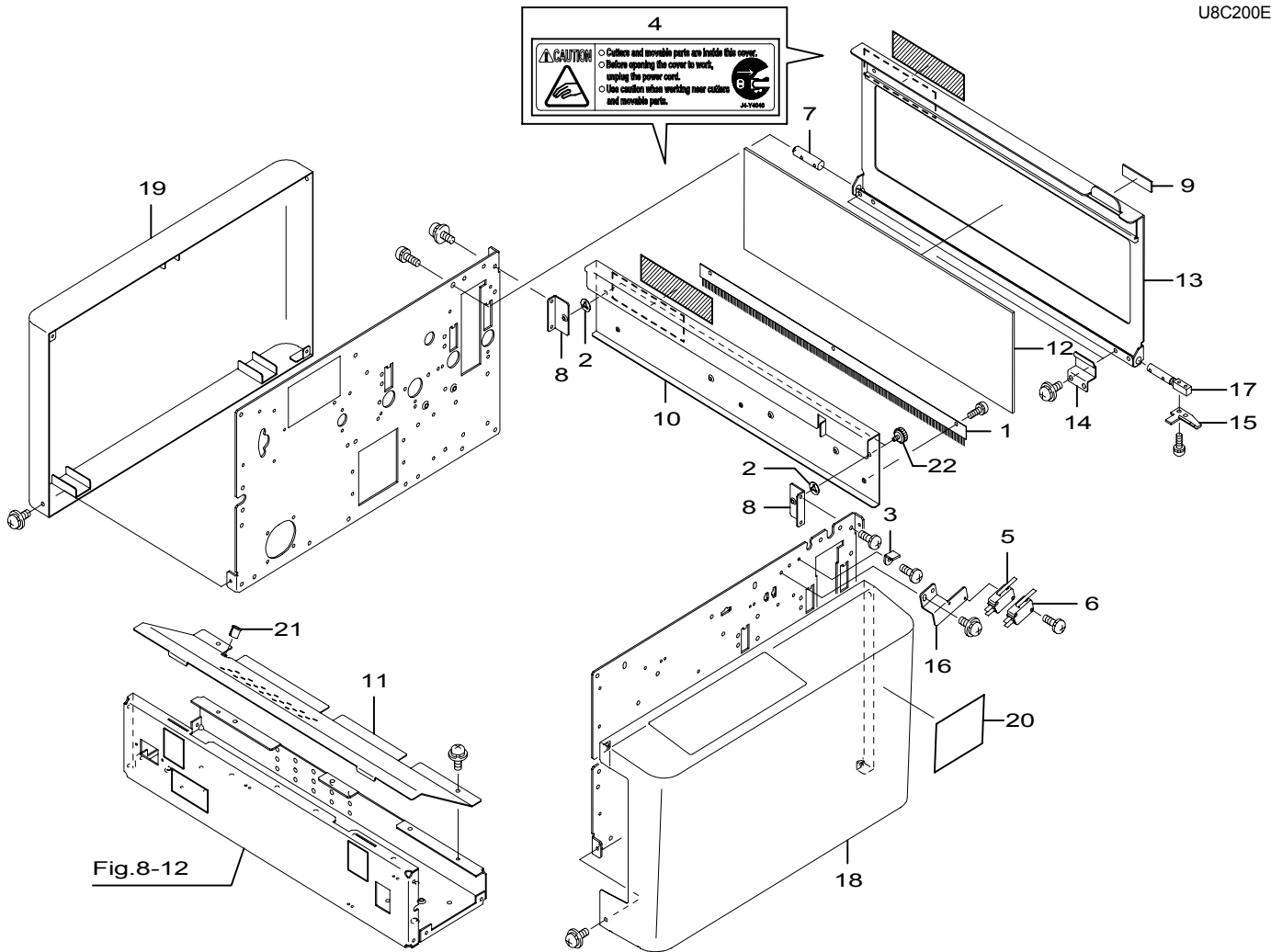
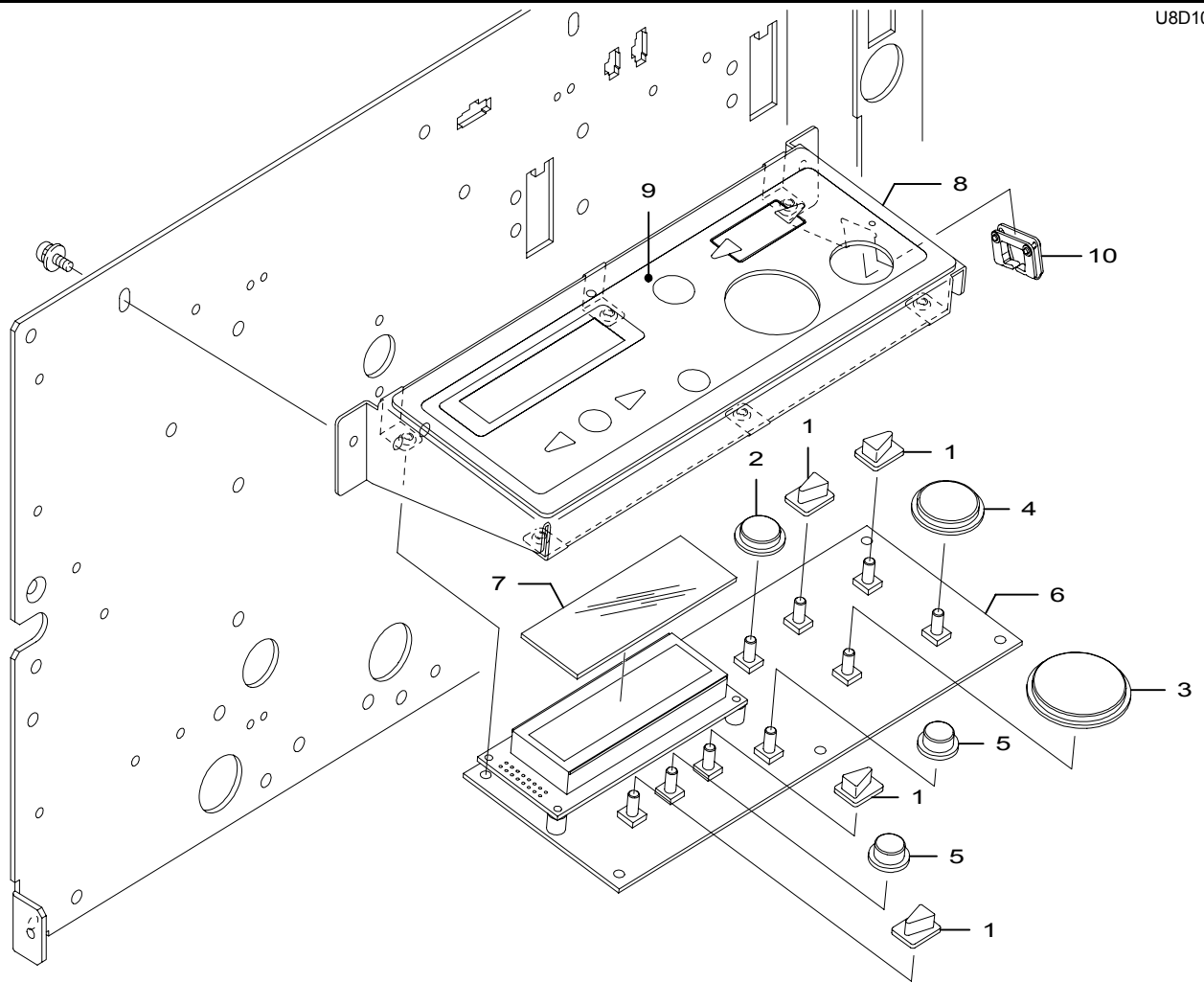


Fig.8-12

KEY No.	PARTS No.	DESCRIPTION	Q'TY	WEEE	REMARKS	I / C
1	B3-50320	STATIC ELIMINATING BAR	1			
2	DA294	PLASTIC RETAINING WASHERS	2			
3	F4-40290	ANGLE	1			
4	J4-Y4040	CAUTION LABEL	2			
5	LA048	MICRO SWITCH (VX-52-1A3)	1			
6	LA052	MICRO SWITCH (VX-012-1C23)	1			
7	M2-C2090	SHAFT	1			
8	M2-C2130	ANGLE	2			
9	R8-T1260	LABEL:DRUM STOPPER	1			
10	U8-C2011	REAR COVER	1			
11	U8-C2041	INNER COVER	1			
12	U8-C2051	COVER	1	PET		
13	U8-C2061	TOP COVER UNIT	1		SET(4,13)	
14	U8-C2071	COVER BRACKET	2			
15	U8-C2081	STOPPER	1			
16	U8-C2091	SWITCH ANGLE	1			
17	U8-C2101	SHAFT L	1			
18	U8-C2143	COVER R UNIT	1			
19	U8-C2163	COVER L UNIT	1			
20	U8-T1071	LABEL(EXPORT)	1			
21	XA014	BUSHING (OCB-375)	1			
22	990-52392	KNOB SCREW UNIT	2	AS		

# 11. Control Panel Section

U8D100



KEY No.	PARTS No.	DESCRIPTION	Q'TY	WEEE	REMARKS	I / C
1	J3-K5211	KEY TOP	4	ABS		
2	K8-L2050	KEY TOP	1	ABS		
3	K9-K1081	KEY TOP	1	ABS		
4	K9-K1091	KEY TOP	1	ABS		
5	N5-K5131	KEY TOP	2	ABS		
6	S6-V3222	PANEL P.C.B UNIT	1			
7	S8-K5031	COVER	1	PC		
8	U8-D101	CONTROL PANEL UNIT	1			
9	U8-T1051	LABEL PANEL(EXPORT)	1			
10	XC037	CORD CLAMP (EH-11U)	1			

## 12. Stacker Section

U8E100

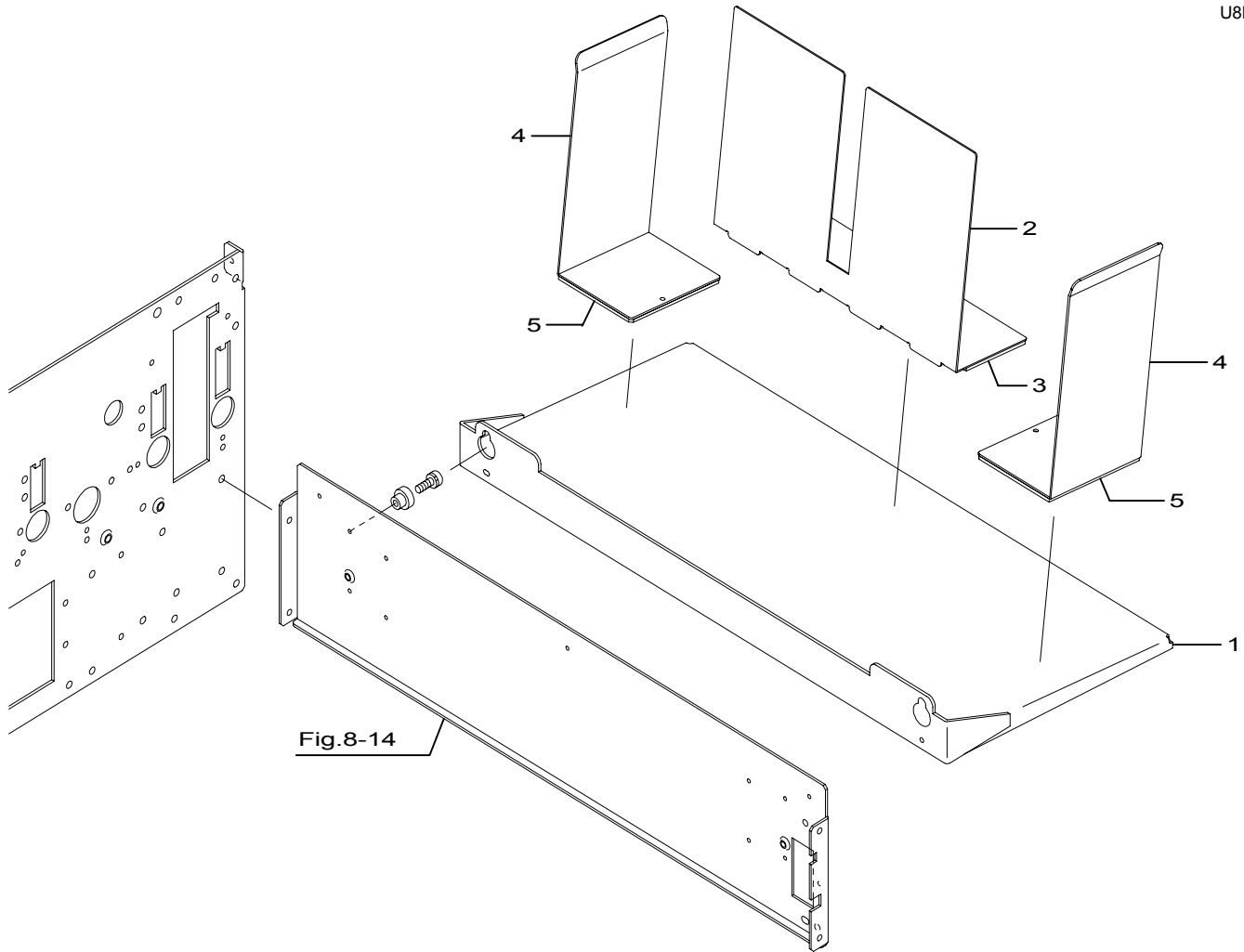
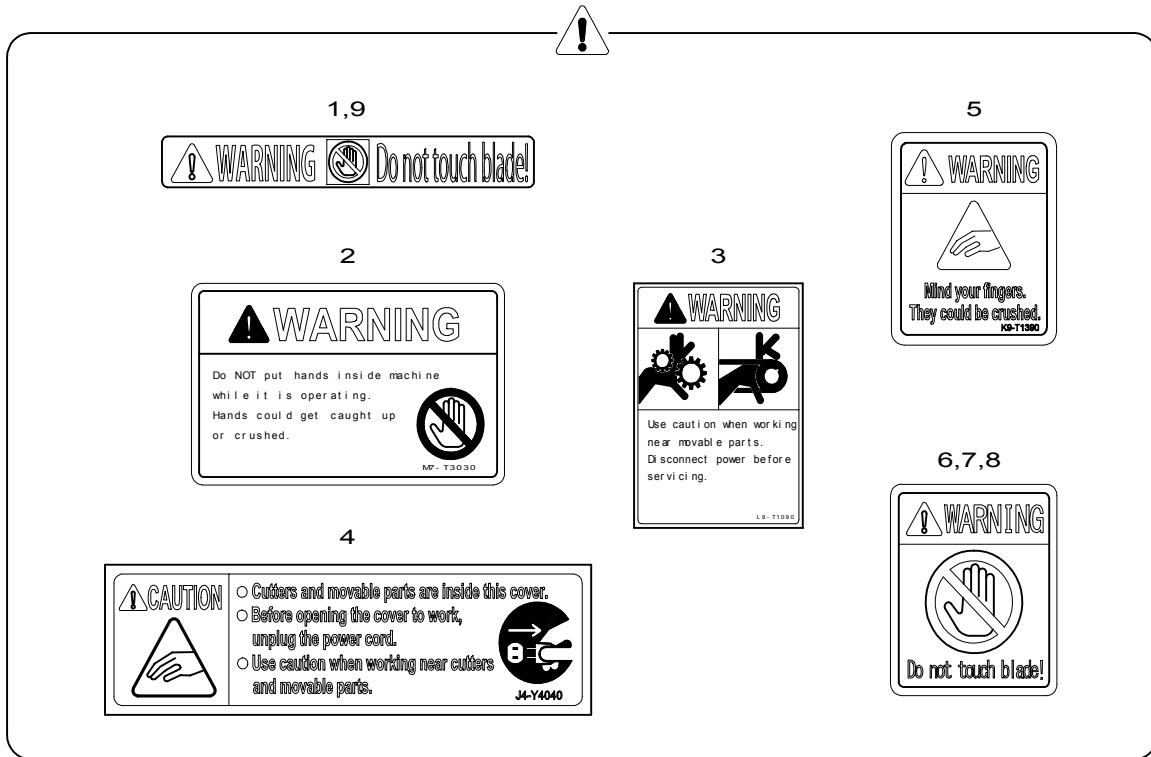


Fig.8-14

KEY No.	PARTS No.	DESCRIPTION	Q'TY	WEEE	REMARKS	I / C
1	U8-E1011	PAPER RECEIVER PLATE UNIT	1			
2	U8-E1031	PAPER RECEIVER STOPPER	1			
3	U8-E1041	RUBBER MAGNET	1			
4	U8-E1051	PAPER RECEIVER GUIDE	2			
5	U8-E1061	RUBBER MAGNET	2			

# 13. Safety Labels

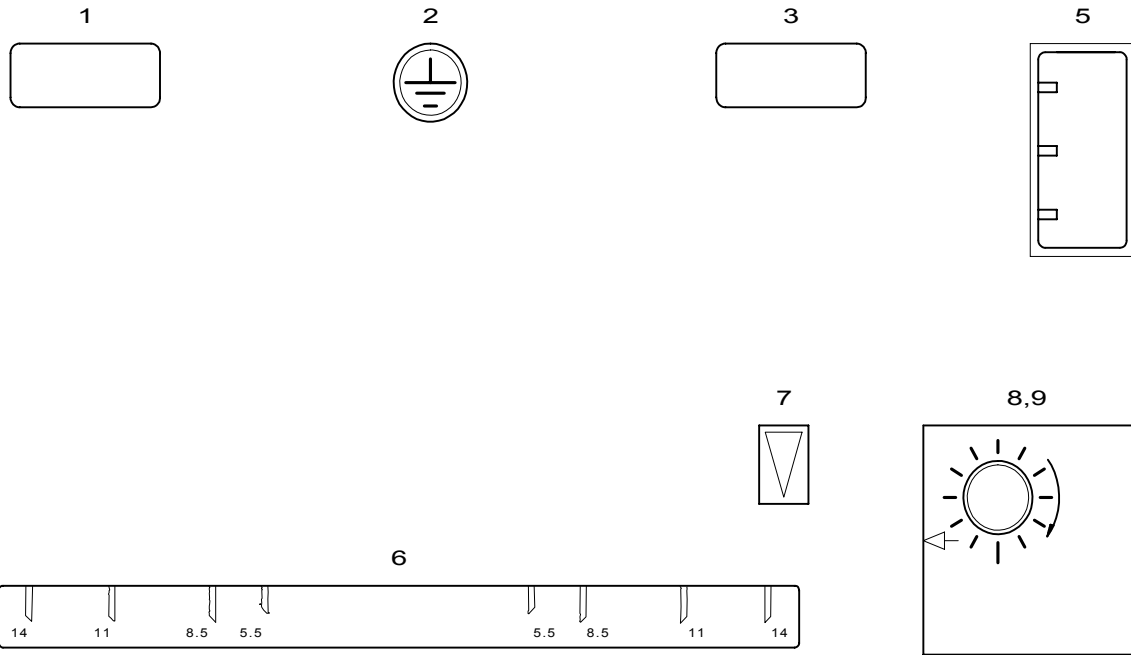
U8L101E



KEY No.	PARTS No.	DESCRIPTION	Q'TY	WEEE	REMARKS	I / C
1	L8-T1070	WARNING LABEL	1			
2	M7-T3030	WARNING LABEL	1			
3	L8-T1090	WARNING LABEL	1			
4	J4-Y4040	CAUTION LABEL	2			
5	K9-T1390	WARNING LABEL	2			
6	J4-Y4050	WARNING LABEL	1		(O.P)	
7	J4-Y4050	WARNING LABEL	1		(O.P)	
8	J4-Y4050	WARNING LABEL	1		(O.P)	
9	L8-T1070	WARNING LABEL	1			

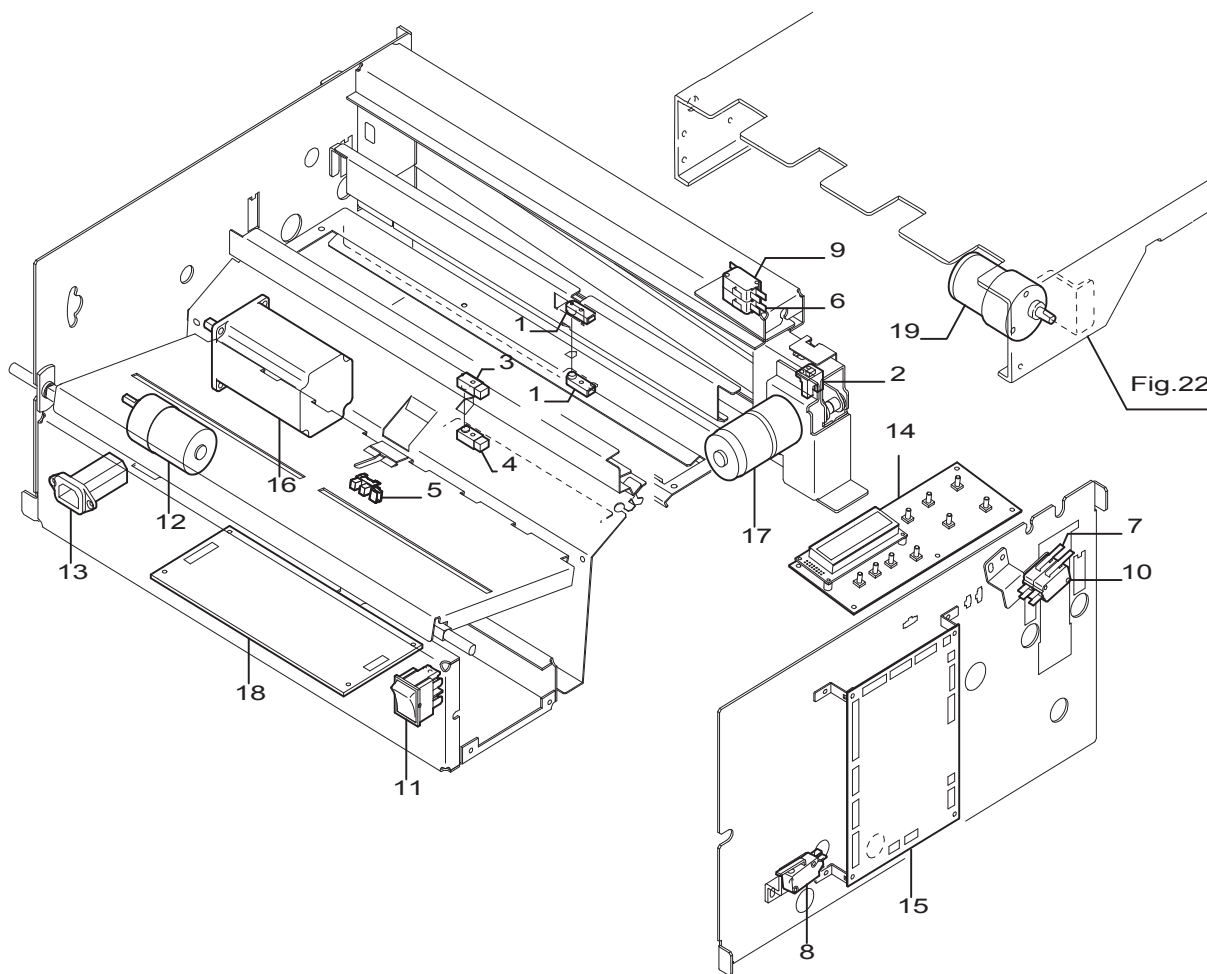
# 14. Labels

U8L102E



KEY No.	PARTS No.	DESCRIPTION	Q'TY	WEEE	REMARKS	I / C
1	E1-79380	LABEL FCC	1		120V	
2	F4-60300	LABEL GROUND	1			
3	R8-T1260	LABEL:DRUM STOPPER	1			
5	U8-T4050	LABEL:FEED PRESSURE	1			
6	U8-T1061	LABEL:PAPER SIZE(INCHI)	1		EI	
7	D5-60120	LABEL S	1		O.P	
8	M2-T1070	SCALE LABEL	1		EA/EI (O.P)	
9	M2-T1070	SCALE LABEL	1		EA/EI (O.P)	

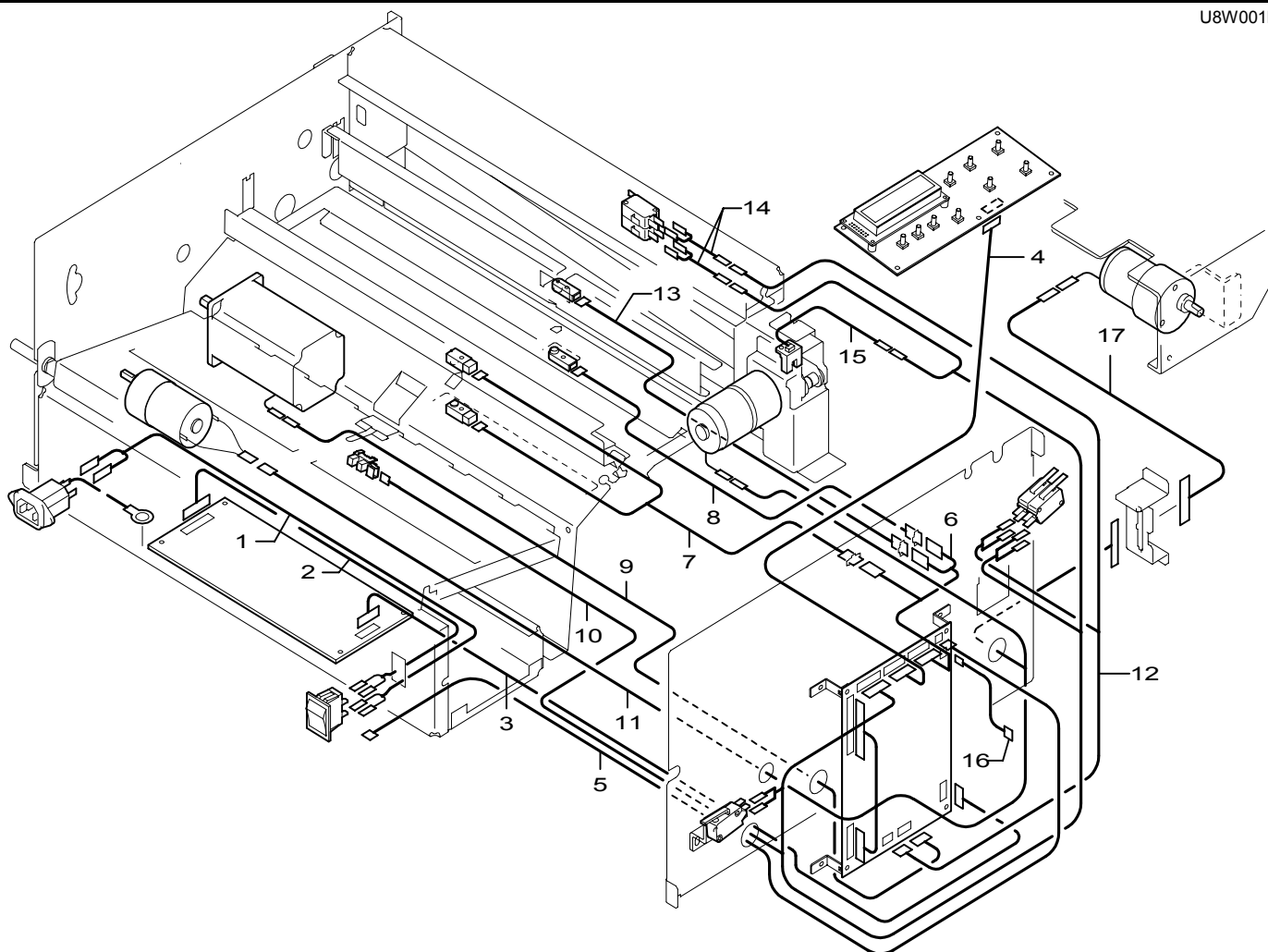
# 15. Electrical Parts



KEY No.	PARTS No.	DESCRIPTION	Q'TY	<del>WEEE</del>	REMARKS	I/C
1	CA033	PHOTOINTERRUPTER	1			
2	CA046	PHOTO MICROSENSOR	1			
3	CA054	PHOTO MICROSENSOR	1			
4	CA056	PHOTO MICROSENSOR	1			
5	CA065	PHOTO MICROSENSOR	1			
6	LA048	MICRO SWITCH (VX-52-1A3)	1			
7	LA048	MICRO SWITCH (VX-52-1A3)	1			
8	LA052	MICRO SWITCH (VX-012-1C23)	1			
9	LA052	MICRO SWITCH (VX-012-1C23)	1			
10	LA052	MICRO SWITCH (VX-012-1C23)	1			
11	LC033	LOCKER SWITCH	1			
12	U8-X1030	MOTOR	1			N=0
13	R8-W1460	CABLE UNIT :TERMINAL PLATE	1			
14	S6-V3222	PANEL P.C.B UNIT	1			
15	U8-V5003	MAIN PCB UNIT	1			
16	U8-X1020	MOTOR (103H7128-5842)	1			
17	U8-X1011	CUTTER UNIT	1			
18	UA058	SWITCHING POWER SUPPLY	1			
19	F7-81060	MOTOR (DD036GA201)	1		O.P	

# 16. Wiring

U8W001E



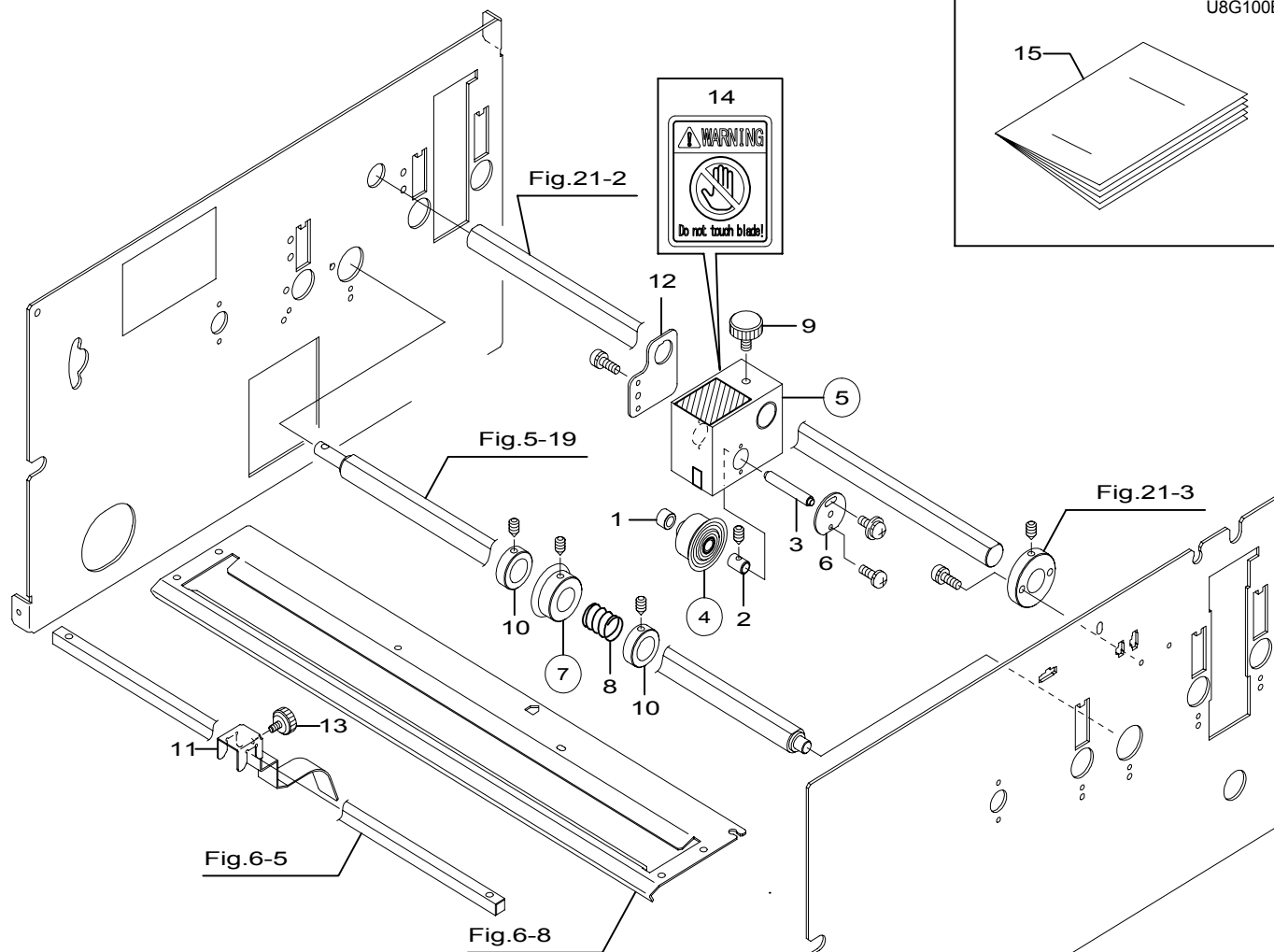
KEY No.	PARTS No.	DESCRIPTION	Q'TY	WEEE	REMARKS	I / C
1	U8-W1011	BUNDLED CABLE UNIT AC 1	1			
2	U8-W1021	BUNDLED CABLE UNIT AC 2	1			
3	U8-W2011	BUNDLED CABLE UNIT 24V	1			
4	U8-W2021	BUNDLED CABLE UNIT PANEL	1			
5	U8-W2031	BUNDLED CABLE UNIT AUTO POW	1			
6	U8-W2041	BUNDLED CABLE UNIT PPS	1			
7	U8-W2051	BUNDLED CABLE UNIT PPS1	1			
8	U8-W2061	BUNDLED CABLE UNIT PPS2	1			
9	U8-W2071	BUNDLED CABLE UNIT STEPPING	1			
10	U8-W2081	BUNDLED CABLE UNIT SENSOR	1			
11	U8-W2091	BUNDLED CABLE UNIT SENSOR	1			
12	U8-W2101	BUNDLED CABLE UNIT INTER LOC	1			
13	U8-W2111	BUNDLED CABLE UNIT LIGHT-EMI	1			
14	U8-W2121	BUNDLED CABLE UNIT SWITCH	1			
15	U8-W2131	BUNDLED CABLE UNIT HP SENSO	1			
16	U8-W2141	BUNDLED CABLE UNIT DOWN LOA	1			
17	U8-W2301	BUNDLED CABLE UNIT CONVEYER	1		O.P	



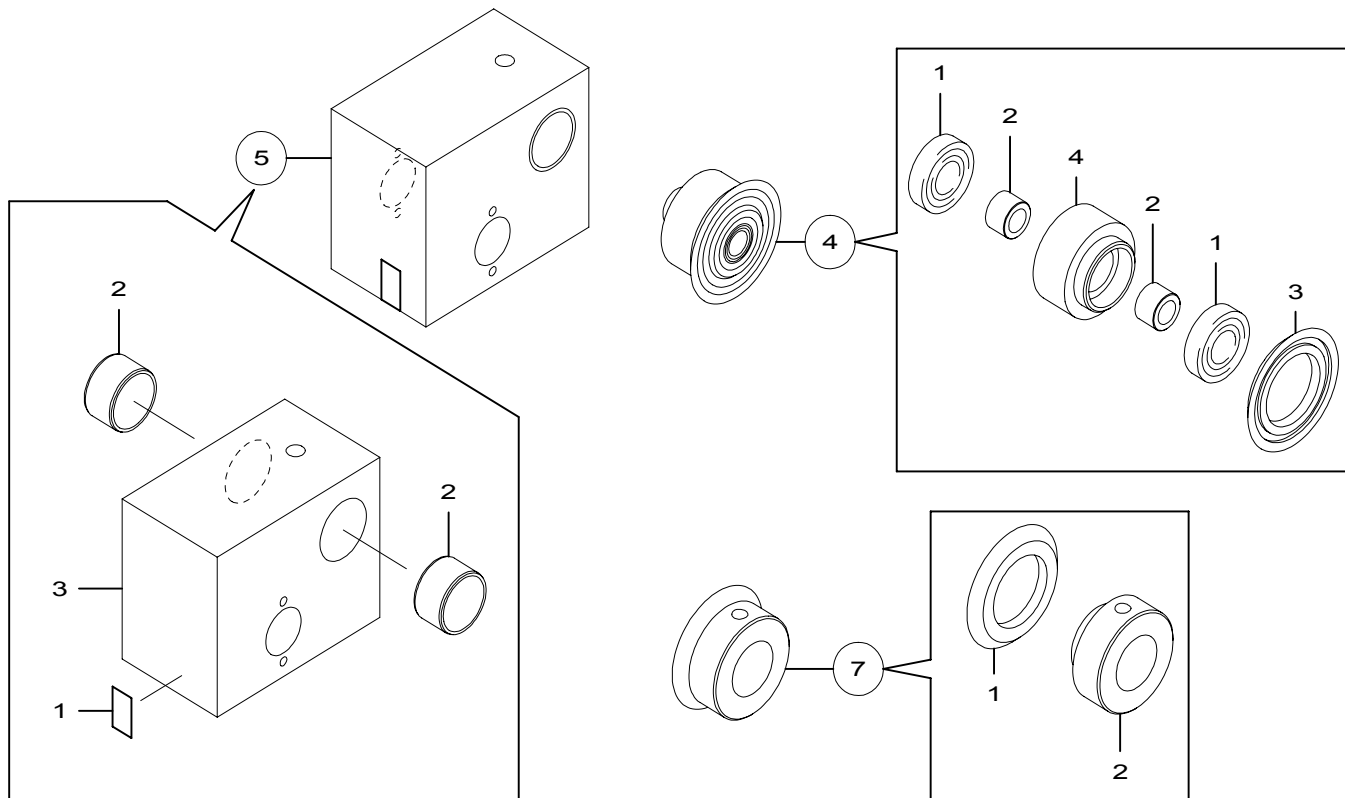


# 18. Center slitter unit (Option)

U8G100E



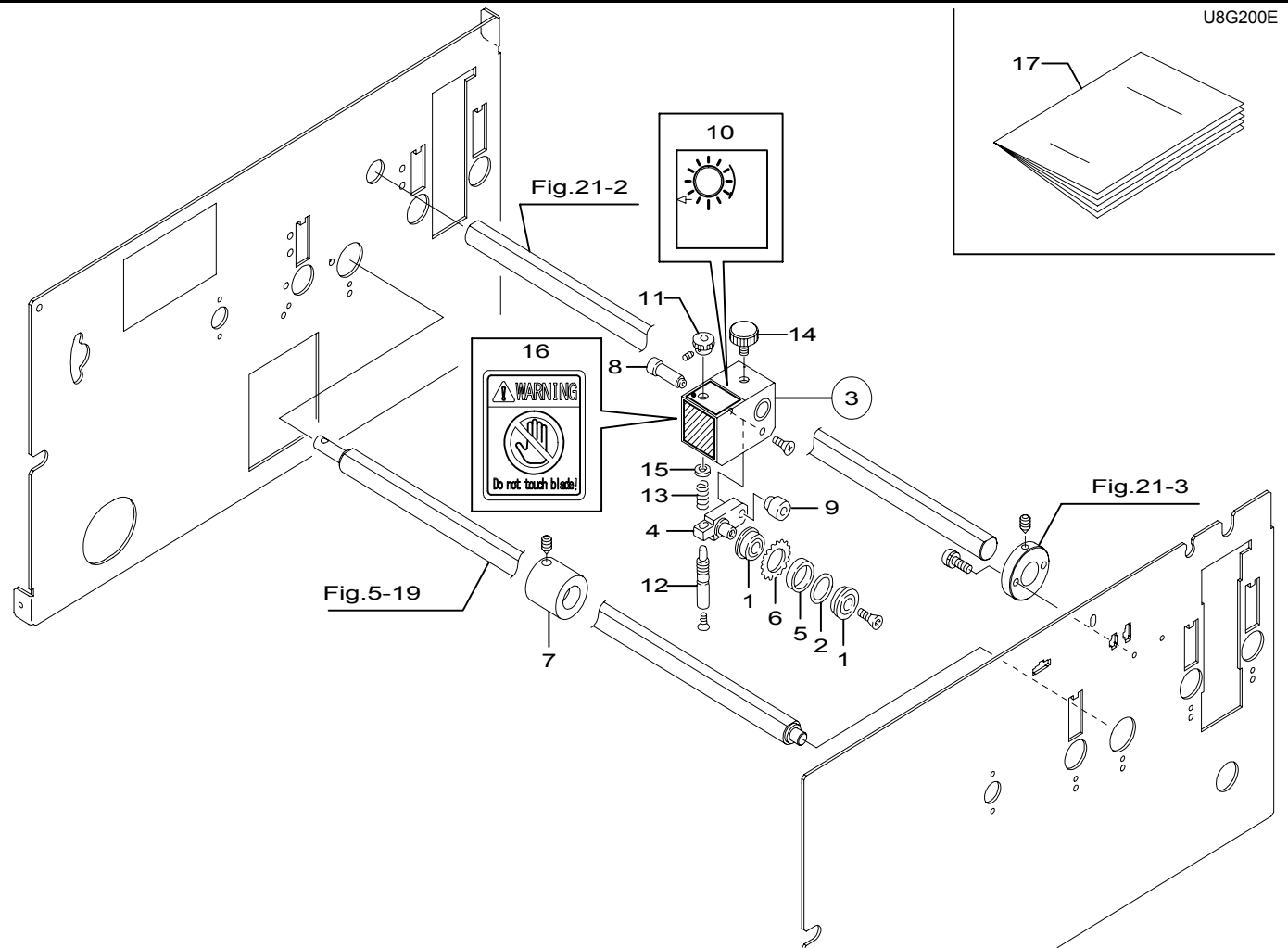
KEY No.	PARTS No.	DESCRIPTION	Q'TY	WEEE	REMARKS	I / C
1	AC069	BEARING (B-S6-117)	1			
2	D5-40340	SLEEVE	1			
3	F2-31130	SHAFT	1			
④	G6-32011	UPPER BLADE UNIT	1			
⑤	G6-32110	HOUSING UNIT	1		SET( ~ , 14)	
6	J4-30461	LID	1			
⑦	U8-G1041	LOWER BLADE UNIT	1			
8	U8-G1061	SPRING C	1			
9	U8-G1071	KNOB SCREW	1			
10	U8-G1081	COLAR	2			
11	U8-G1091	R GUIDE	1			
12	U8-G1131	PLATE	1			
13	990-52392	KNOB SCREW UNIT	1	AS		
14	F2-Y4050	WARNING LABEL	1			
15	U8-Y1170	INSTALLATION MANUAL	1			



KEY No.	PARTS No.	DESCRIPTION	Q'TY	WEEE	REMARKS	I / C
④	G6-32011	UPPER BLADE UNIT	1			
④-1	AA022	BALL BEARING (688ZZ)	2			
④-2	AC002	DU BUSH (DKB0606)	2			
④-3	G6-32020	SLITTER BLADE	1			
④-4	G6-32031	BOSS	1			
⑤	G6-32110	HOUSING UNIT	1			
⑤-1	D5-60120	LABEL S	1			
⑤-2	AC012	DU BUSH (K5B1510)	2			
⑤-3	G6-32121	HOUSING	1			
⑦	U8-G1041	LOWER BLADE UNIT	1			
⑦-1	G6-32020	SLITTER BLADE	1			
⑦-2	U8-G1051	BOSS	1			

# 19. Perforator (Standard) unit (Option)

U8G200E

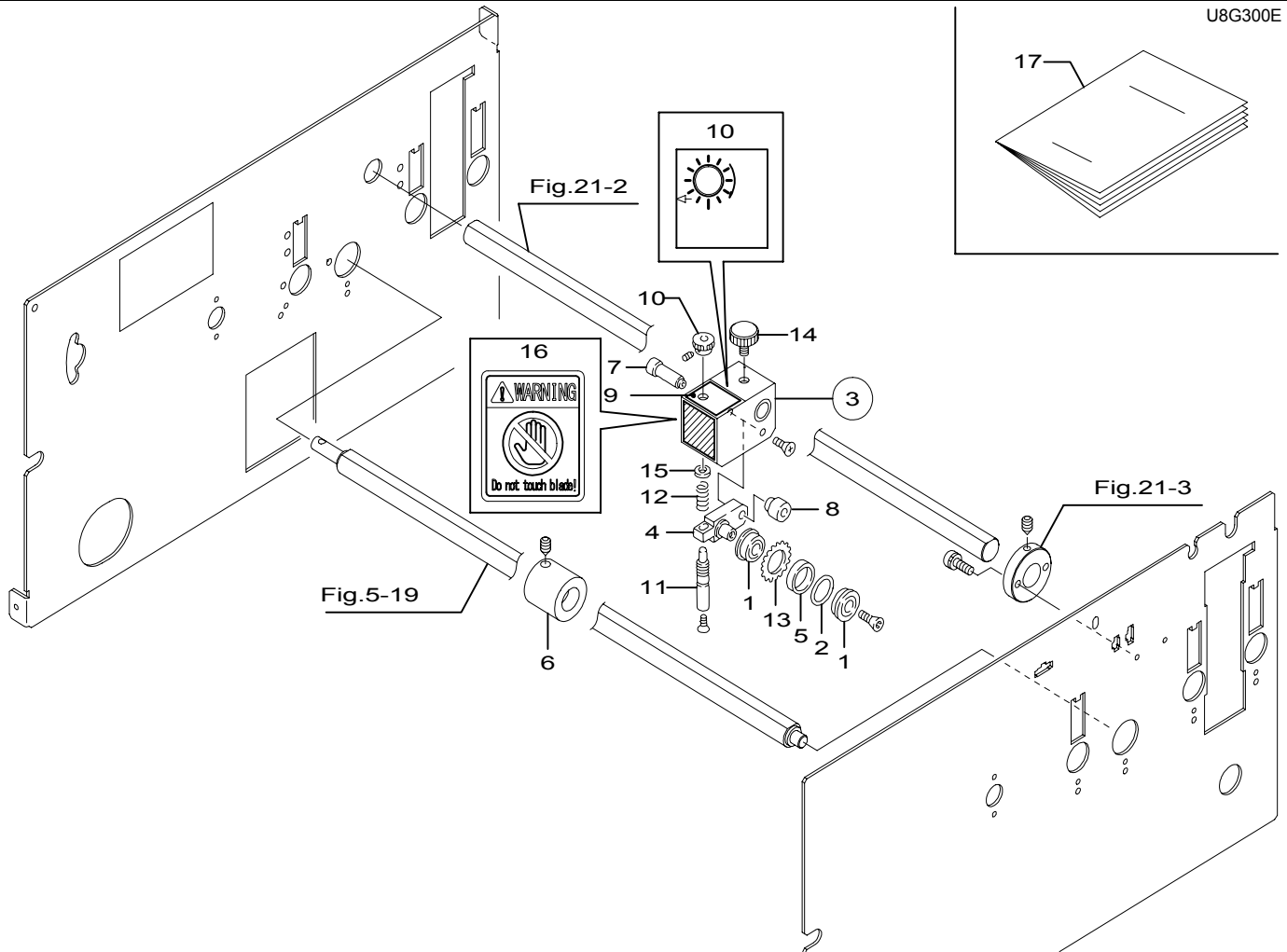


KEY No.	PARTS No.	DESCRIPTION	Q'TY	WEEE	REMARKS	I / C
1	AA019	BALL BEARING (F698ZZ)	2			
2	EA003	O-RING (1AP18)	1			
③	U8-S0002	HOUSING UNIT	1		SET(~ ,16)	
4	G6-31082	LEVER UNIT	1			
5	G6-31150	COLLAR	1			
6	G6-31180	ROTARY PERFORATION BLADE	1			
7	G6-31210	CYLINDER	1			
8	G6-31231	SHAFT	1			
9	G6-31240	COLLAR	1			
10	M2-T1070	SCALE LABEL	1		EA,EI	
11	G6-31271	KNOB	1			
12	G6-31282	SHAFT	1			
13	G6-31291	SPRING C	1			
14	U8-G1071	KNOB SCREW	1			
15	26-23250	WASHER	1			
16	F2-Y4050	WARNING LABEL	1			
17	U8-Y1180	INSTALLATION MANUAL	1			

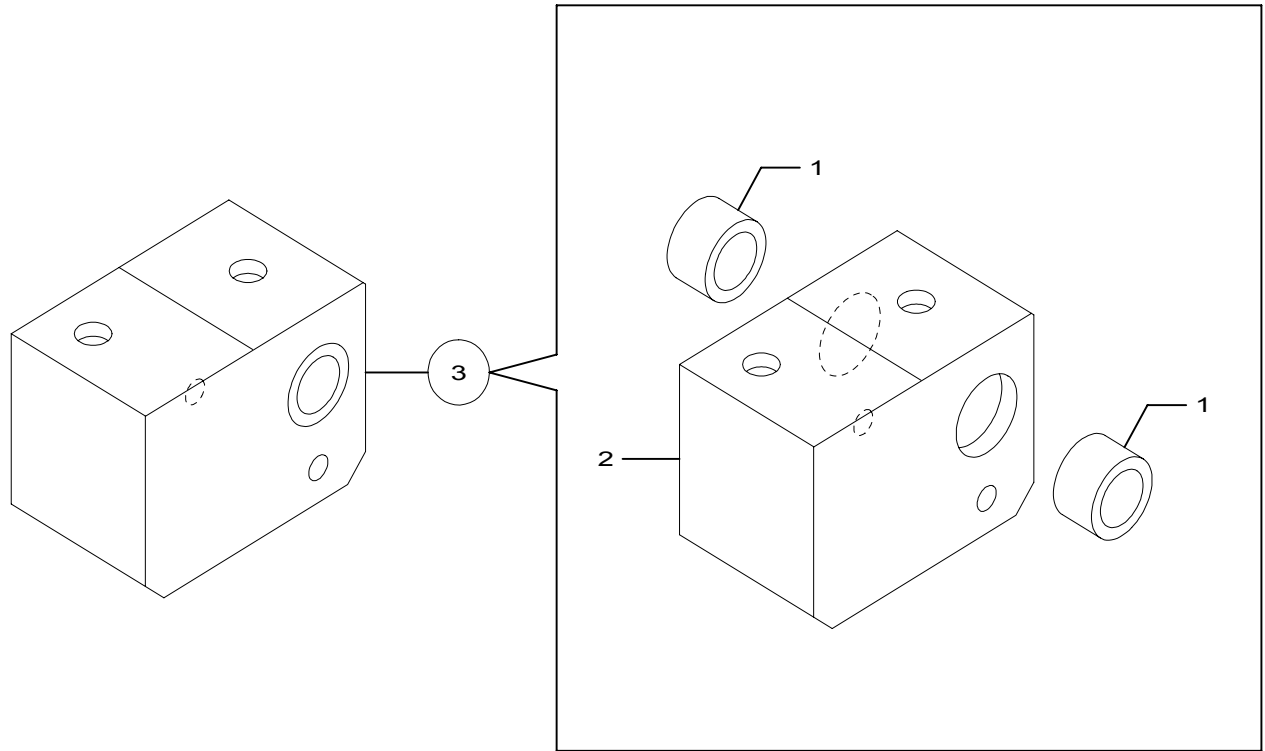


## 20. Perforator (Micro) unit (Option)

U8G300E



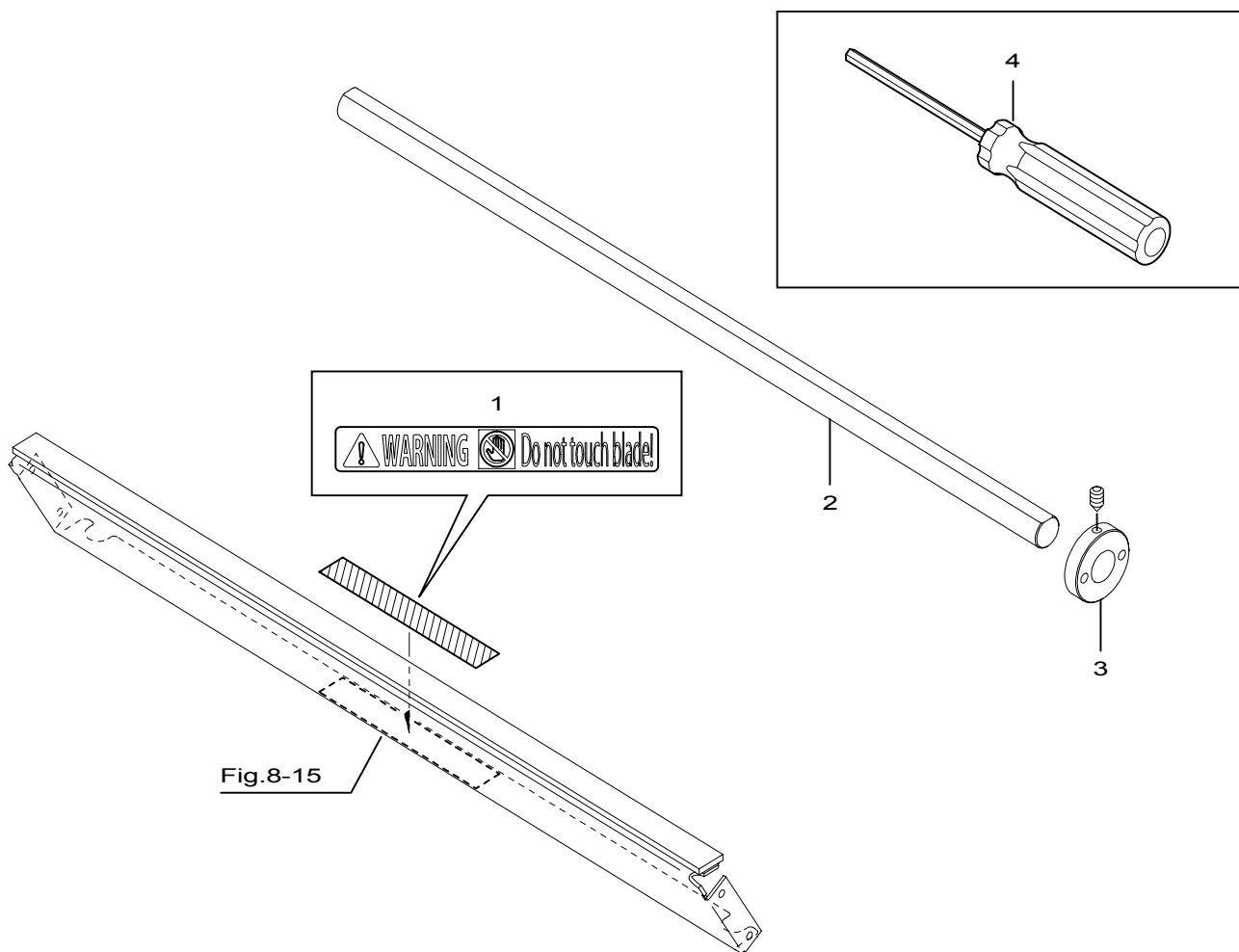
KEY No.	PARTS No.	DESCRIPTION	Q'TY	WEEE	REMARKS	I / C
1	AA019	BALL BEARING (F698ZZ)	2			
2	EA003	O-RING (1AP18)	1			
(3)	U8-S0002	HOUSING UNIT	1		SET(~,16)	
4	G6-31082	LEVER UNIT	1			
5	G6-31150	COLLAR	1			
6	G6-31210	CYLINDER	1			
7	G6-31231	SHAFT	1			
8	G6-31240	COLLAR	1			
9	M2-T1070	SCALE LABEL	1		EA,EI	
10	G6-31271	KNOB	1			
11	G6-31282	SHAFT	1			
12	G6-31291	SPRING C	1			
13	G6-31340	MICROSEWING MACHINE BLADE	1			
14	U8-G1071	KNOB SCREW	1			
15	26-23250	WASHER	1			
16	F2-Y4050	WARNING LABEL	1			
17	U8-Y1180	INSTALLATION MANUAL	1			



KEY No.	PARTS No.	DESCRIPTION	Q'TY	WEEE	REMARKS	I / C
③	U8-S0002	HOUSING UNIT	1			
③-1	AC012	DU BUSH (K5B1510)	2			
③-2	G6-31021	HOUSING	1			

# 21. Attachment KIT (Option)

U8G400E

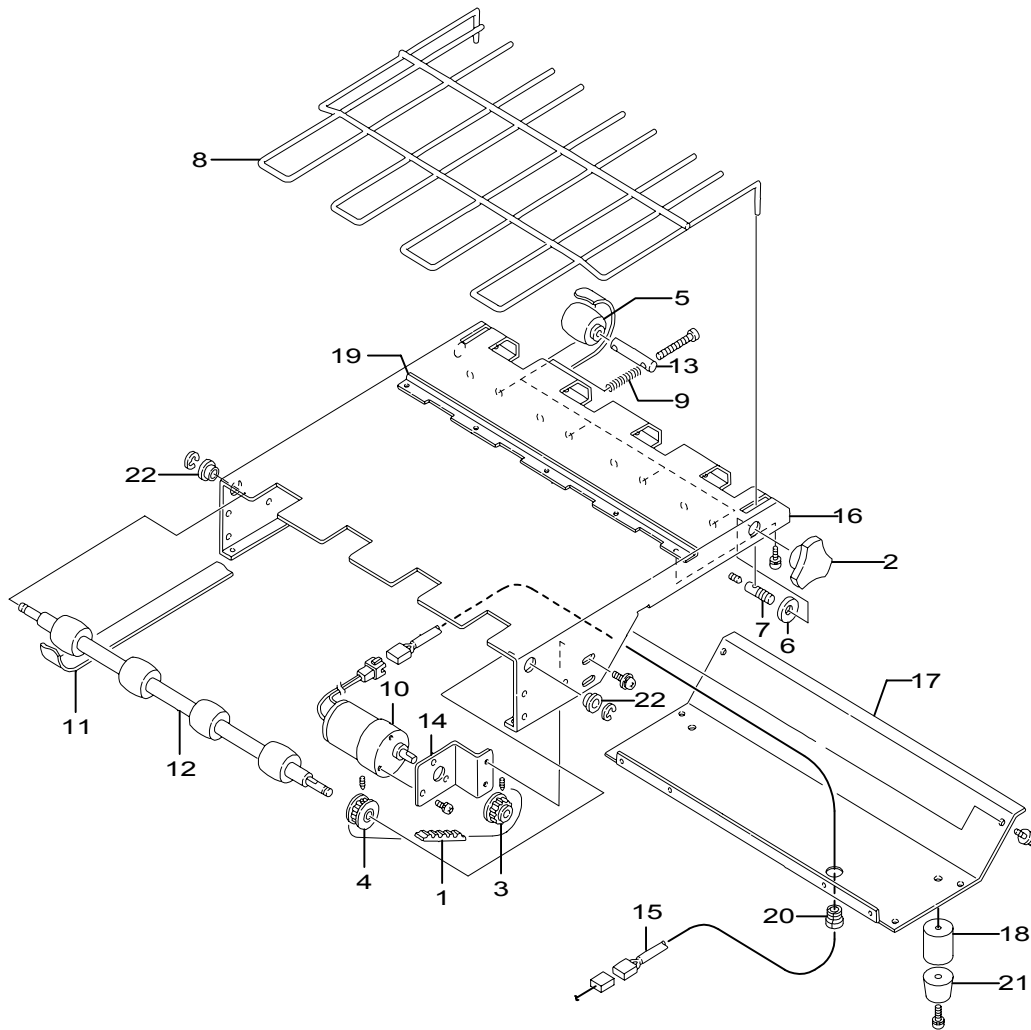


KEY No.	PARTS No.	DESCRIPTION	Q'TY	 WEEE	REMARKS	I / C
1	L8-T1070	WARNING LABEL	1			
2	U8-G1011	S SHAFT	1			
3	U8-G1101	STOPPER	1			
4	XZ006	HEXAGON WRENCH	1			



## 22. Straight conveyor 1 (Option)

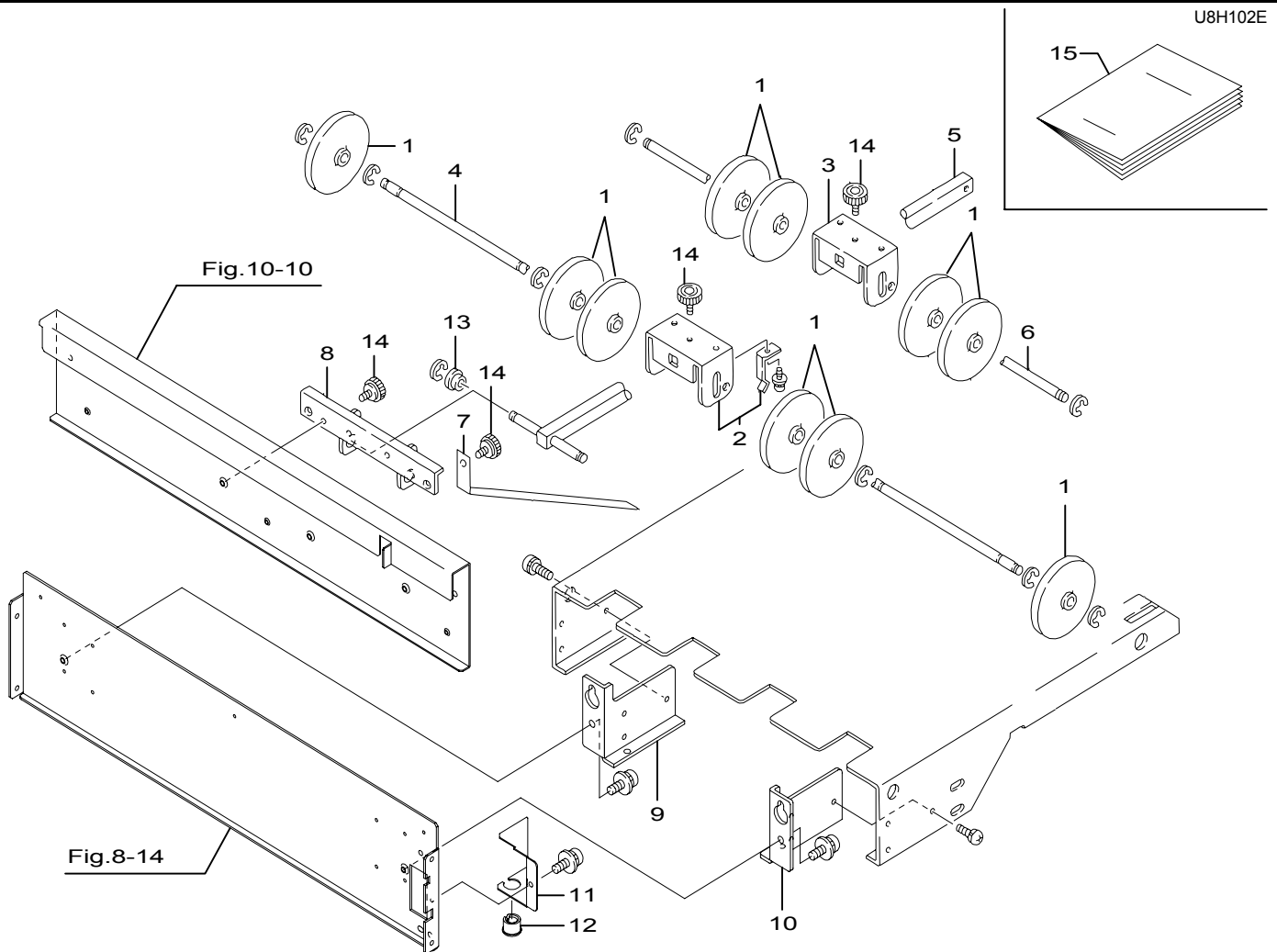
U8H101



KEY No.	PARTS No.	DESCRIPTION	Q'TY	WEEE	REMARKS	I / C
1	AJ036	TIMING BELT (60S4.5M162)	1			
2	DA276	KNOB	2			
3	E6-30030	PULLEY	1			
4	E6-30080	PULLEY UNIT	1			
5	F4-20180	DRAM ROLLER UNIT	4	NBR		
6	F4-55320	SPACER	2			
7	F4-55330	SHAFT	2			
8	F4-55340	PAPER RECEIVER	1			
9	F4-55360	SPRING C	8			
10	F7-81060	MOTOR (DD036GA201)	1			
11	G6-70020	BELT	4			
12	G6-70071	ROLLER UNIT	1			
13	G6-70140	SHAFT	4			
14	G6-70461	MOTOR PLATE	1			
15	U8-W2301	BUNDLED CABLE UNIT MOTOR	1			
16	U8-H1011	RECEIVING BASE UNIT	1			
17	U8-H1021	BOTTOM PLATE	1			
18	U8-H1041	SPACER	2			
19	U8-H1051	PLATE	1			
20	XA012	BUSHING (SR-5P-4)	2			
21	49-51180	RUBBER FOOT	2			
22	72-25310	BEARING	2			

## 23. Straight conveyor 2 (Option)

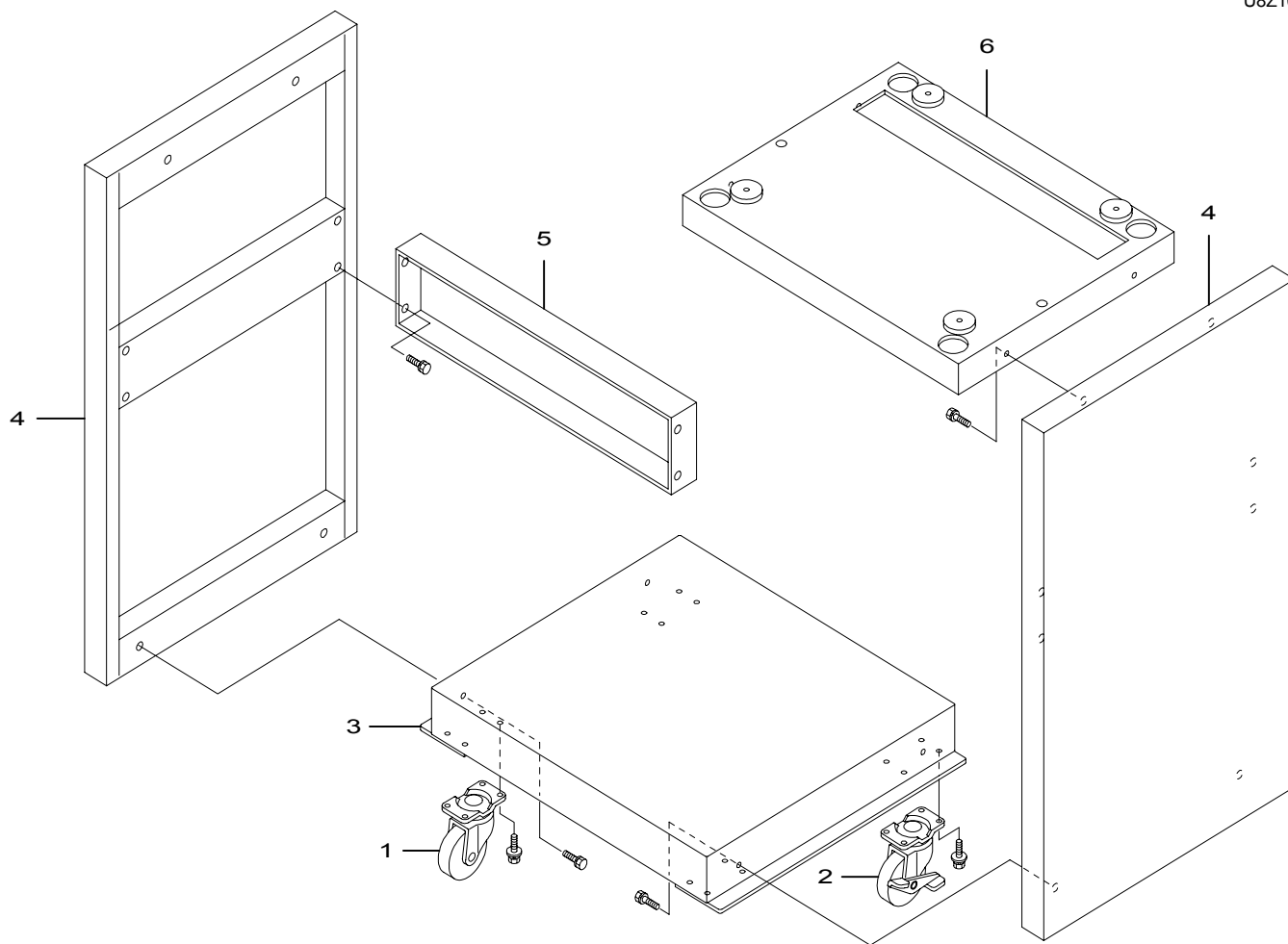
U8H102E



KEY No.	PARTS No.	DESCRIPTION	Q'TY	WEEE	REMARKS	I / C
1	C3-55370	ROLLER	10	POM		
2	F4-55540	BRACKET UNIT	1			
3	F4-55550	BRACKET	1			
4	F4-55590	SHAFT	1			
5	G6-70230	ANGLE SHAFT UNIT	1			
6	G6-70340	SHAFT	1			
7	G6-70651	SLIDING PLATE	2			
8	S9-P1061	PLATE UNIT	1			
9	M2-H1602	SIDE PLATE	1			
10	M2-H1612	SIDE PLATE	1			
11	U8-H1031	CONNECTOR COVER	1			
12	XA001	BUSHING (OCB-500)	1			
13	80-24230	BEARING	2			
14	990-52392	KNOB SCREW UNIT	4	AS		
15	U8-Y1210	INSTALLATION MANUAL	1			

# 24. Cabinet (Option)

U8Z100E



KEY No.	PARTS No.	DESCRIPTION	Q'TY	WEEE	REMARKS	I / C
1	DA007	CASTER (TEL-65-RL)	2			
2	DA008	CASTER (TEL-65-RL-S-2)	2			
3	U8-F1011	BOTTOM PLATE UNIT	1			
4	U8-F1021	SIDE PLATE UNIT	2			
5	U8-F1031	CENTER PLATE	1			
6	U8-F1041	TOP PLATE	1			

# RECOMMENDED PARTS LIST

RECOMMEND PARTS LIST

MODEL

PARTS No.	DESCRIPTION	Q'TY	PAGE	KEY No.
AJ013	TIMING BELT (60S4.5M347)	1	5	1
AJ036	TIMING BELT (60S4.5M162)	1	26	1
AJ263	TIMING BELT (100S3M564)	1	6	4
AJ264	TIMING BELT (100S3M270)	1	6	5
CA033	PHOTOINTERRUPTER (KB1241-NI)	1	7	2
CA033	PHOTOINTERRUPTER (KB1241-NI)	1	16	1
CA046	PHOTO MICROSENSOR (KI1234-AALF)	1	8	1
CA046	PHOTO MICROSENSOR (KI1234-AALF)	1	16	2
CA054	PHOTO MICROSENSOR (KB1281-AA12LF)	1	4	1
CA054	PHOTO MICROSENSOR (KB1281-AA12LF)	1	16	3
CA056	PHOTO MICROSENSOR (KB1284-AA22LF)	1	4	2
CA056	PHOTO MICROSENSOR (KB1284-AA22LF)	1	16	4
CA065	PHOTO MICROSENSOR (GP1A173LCS2F)	1	1	1
CA065	PHOTO MICROSENSOR (GP1A173LCS2F)	1	16	5
E1-23660	SEPARATOR BASE UNIT	1	4	5
F7-81060	MOTOR (DD036GA201)	1	16	19
F7-81060	MOTOR (DD036GA201)	1	26	10
G6-31180	ROTARY PERFORATION BLADE	1	21	6
G6-31210	CYLINDER	1	21	7
G6-31210	CYLINDER	1	23	6
G6-31340	MICROSEWING MACHINE BLADE	1	23	13
G6-32011	UPPER BLADE UNIT	1	19	④
G6-32011	UPPER BLADE UNIT	1	20	④
G6-70020	BELT	4	26	11
LA048	MICRO SWITCH (VX-52-1A3)	1	10	2
LA048	MICRO SWITCH (VX-52-1A3)	1	11	5
LA048	MICRO SWITCH (VX-52-1A3)	1	16	6
LA048	MICRO SWITCH (VX-52-1A3)	1	16	7
LA052	MICRO SWITCH (VX-012-1C23)	1	3	10
LA052	MICRO SWITCH (VX-012-1C23)	1	10	3
LA052	MICRO SWITCH (VX-012-1C23)	1	11	6
LA052	MICRO SWITCH (VX-012-1C23)	1	16	8
LA052	MICRO SWITCH (VX-012-1C23)	1	16	9
LA052	MICRO SWITCH (VX-012-1C23)	1	16	10
LC033	LOCKER SWITCH (AJ8R2024BBCF)	1	10	4
LC033	LOCKER SWITCH (AJ8R2024BBCF)	1	16	11
R8-B3021	RUBBER ROLLER UNIT	3	5	11
S6-V3222	PANEL P.C.B UNIT	1	12	6
S6-V3222	PANEL P.C.B UNIT	1	16	14
U8-B1021	SPONGE ROLL	3	6	14
U8-B1031	DRIVING ROLLER	3	6	15
U8-G1041	LOWER BLADE UNIT	1	19	⑦
U8-G1041	LOWER BLADE UNIT	1	20	⑦
U8-V5003	MAIN PCB UNIT	1	10	17
U8-V5003	MAIN PCB UNIT	1	16	15
U8-X1011	CUTTER UNIT	1	16	17
U8-X1011	CUTTER UNIT	1	8	18
U8-X1020	MOTOR (103H7128-5842)	1	6	20
U8-X1020	MOTOR (103H7128-5842)	1	16	12
U8-X1030	MOTOR	1	5	9
U8-X1030	MOTOR	1	16	12
UA058	SWITCHING POWER SUPPLY (ZWS150PAF-24/J HFP)	1	10	16
UA058	SWITCHING POWER SUPPLY (ZWS150PAF-24/J HFP)	1	16	18

# INDEX

INDEX

MODEL

PARTS No.	SECTION	PAGE	KEY No.	REMARKS	PARTS No.	SECTION	PAGE	KEY No.	REMARKS
0Z3-06018	7	8	21		CA046	7	8	1	
0Z3-06022	8	9	19		CA046	15	16	2	
0Z4-08022	2	3	17		CA054	3	4	1	
26-21320	1	1	21		CA054	15	16	3	
26-22520	1-1	2	⑫ -2		CA056	3	4	2	
26-23250	19	21	15		CA056	15	16	4	
26-23250	20	23	15		CA065	1	1	1	
26-23731	3	4	11		CA065	15	16	5	
26-23731	6	7	11		D5-40340	18	19	2	
49-51180	8	9	20		D5-60120	14	15	6	O.P
49-51180	22	26	21		D5-60120	18-1	20	⑤ -1	
52-14380	2	3	18		DA005	3	4	4	
52-61290	2	3	19		DA007	24	28	1	
72-22310	2	3	20		DA008	24	28	2	
72-22360	2	3	21		DA134	6	7	3	
72-22460	2	3	22		DA137	17	18	2	
72-23291	4	5	13		DA225	8	9	1	
72-23630	3	4	12		DA276	22	26	2	
72-23710	3	4	13		DA294	10	11	2	
72-23760	3	4	14		DA309	5	6	6	
72-23770	3	4	15		E1-23660	3	4	5	
72-23850	3	4	16		E6-30030	22	26	3	
72-25310	4	5	14		E6-30080	4	5	3	
72-25310	22	26	22		E6-30080	22	26	4	
80-24230	23	27	13		EA003	1	1	3	
90-27181	1	1	22		EA003	19	21	2	
990-52392	6	7	12		EA003	20	23	2	
990-52392	10	11	22		EA017	1	1	23	SET(17,23)
990-52392	18	19	13		F2-23520	4	5	4	
990-52392	23	27	14		F2-31130	18	19	3	
A12-51051	4	5	2		F2-Y4050	18	19	14	
AA005	5	6	1		F2-Y4050	19	21	16	
AA013	5	6	2		F2-Y4050	20	23	16	
AA016	2	3	1		F4-20180	22	26	5	
AA019	19	21	1		F4-40290	10	11	3	
AA019	20	23	1		F4-55320	22	26	6	
AA022	18-1	20	④ -1		F4-55330	22	26	7	
AA070	5	6	3		F4-55340	22	26	8	
AC002	18-1	20	④ -2		F4-55360	22	26	9	
AC012	18-1	20	⑤ -2		F4-55540	23	27	2	
AC012	19-1	22	③ -1		F4-55550	23	27	3	
AC012	20-1	24	③ -1		F4-55590	23	27	4	
AC069	18	19	1		F4-60300	9	10	1	
AJ013	4	5	1		F4-60300	14	15	1	
AJ036	22	26	1		F7-21650	7	8	2	
AJ263	5	6	4		F7-81060	15	16	19	O.P
AJ264	5	6	5		F7-81060	22	26	10	
B3-50320	6	7	1		G6-10040	3	4	6	
B3-50320	10	11	1		G6-11051	4	5	5	
C3-55370	23	27	1		G6-11060	4	5	6	
C9-22260	1	1	2		G6-11131	4	5	7	
C9-22360	2	3	2		G6-11170	4	5	8	
C9-22370	2	3	3		G6-20100	5	6	7	
C9-22631	2	3	4		G6-31021	19-1	22	③ -2	
C9-22651	2	3	5		G6-31021	20-1	24	③ -2	
C9-23712	3	4	3		G6-31082	19	21	4	
CA033	6	7	2		G6-31082	20	23	4	
CA033	15	16	1		G6-31150	19	21	5	

INDEX

MODEL

PARTS No.	SECTION	PAGE	KEY No.	REMARKS	PARTS No.	SECTION	PAGE	KEY No.	REMARKS
G6-31150	20	23	5		L8-T1090	13	14	3	
G6-31180	19	21	6		LA048	9	10	2	
G6-31210	19	21	7		LA048	10	11	5	
G6-31210	20	23	6		LA048	15	16	6	
G6-31231	19	21	8		LA048	15	16	7	
G6-31231	20	23	7		LA052	2	3	10	
G6-31240	19	21	9		LA052	9	10	3	
G6-31240	20	23	8		LA052	10	11	6	
G6-31271	19	21	11		LA052	15	16	8	
G6-31271	20	23	10		LA052	15	16	9	
G6-31282	19	21	12		LA052	15	16	10	
G6-31282	20	23	11		LC033	9	10	4	
G6-31291	19	21	13		LC033	15	16	11	
G6-31291	20	23	12		M2-A1200	1	1	5	
G6-31340	20	23	13		M2-A1231	1	1	6	
G6-31390	6	7	4		M2-B2010	6	7	5	
G6-32011	18	19	④		M2-B2021	6	7	6	
G6-32011	18-1	20	④		M2-B2110	6	7	7	
G6-32020	18-1	20	④ -3		M2-C1160	8	9	3	
G6-32020	18-1	20	⑦ -1		M2-C1190	8	9	4	
G6-32031	18-1	20	④ -4		M2-C2090	10	11	7	
G6-32110	18	19	⑤	SET(⑤ ,14)	M2-C2130	10	11	8	
G6-32110	18-1	20	⑤		M2-H1602	23	27	9	
G6-32121	18-1	20	⑤ -3		M2-H1612	23	27	10	
G6-70020	22	26	11		M2-T1070	14	15	7	EA/EI (O.P)
G6-70071	22	26	12		M2-T1070	14	15	8	EA/EI (O.P)
G6-70140	22	26	13		M2-T1070	19	21	10	EA,EI
G6-70230	23	27	5		M2-T1070	20	23	9	EA,EI
G6-70340	23	27	6		M7-B1051	1	1	7	
G6-70461	22	26	14		M7-B1160	2	3	11	
G6-70651	23	27	7		M7-B1170	1	1	8	
J3-B1261	7	8	3		M7-B1200	1	1	9	
J3-B6010	2	3	6		M7-F1022	5	6	11	
J3-K5211	11	12	1		M7-K1140	9	10	5	
J4-30461	18	19	6		M7-T3030	8	9	5	
J4-Y4040	10	11	4		M7-T3030	13	14	2	
J4-Y4040	13	14	4		N5-B4161	4	5	10	
J4-Y4050	13	14	6	(O.P)	N5-C7160	3	4	7	
J4-Y4050	13	14	7	(O.P)	N5-K2200	9	10	6	
J4-Y4050	13	14	8	(O.P)	N5-K5131	11	12	5	
J8-B1081	1	1	4		N5-X1270		18	1	China
J8-B2080	2	3	7		P6-C2031	5	6	12	
J8-B6011	2	3	8		P9-J1173	7	8	5	
J8-B6020	2	3	9		P9-J1311	7	8	6	
K8-L2050	11	12	2		P9-J1350	7	8	7	
K9-K1081	11	12	3		P9-J1361	7	8	8	
K9-K1091	11	12	4		P9-J1420	7	8	9	
K9-T1390	8	9	2		P9-W2351	5	6	21	
K9-T1390	13	14	5		Q6-J2050	7	8	10	
L1-W1260	17	18	1	220V	R8-B1271	1	1	10	
L5-C3050	5	6	8		R8-B1530	3	4	17	
L5-F1040	5	6	9		R8-B3021	4	5	11	
L8-C1050	5	6	10		R8-T1260	10	11	9	
L8-T1070	7	8	4		R8-T1260	14	15	2	
L8-T1070	13	14	1		R8-W1460	9	10	15	
L8-T1070	13	14	9		R8-W1460	15	16	13	
L8-T1070	21	25	1		S6-C3151	2	3	12	
L8-T1090	8	9	6		S6-C3462	2	3	13	
					S6-V3222	11	12	6	



INDEX

MODEL

PARTS No.	SECTION	PAGE	KEY No.	REMARKS	PARTS No.	SECTION	PAGE	KEY No.	REMARKS
S6-V3222	15	16	14		U8-C2163	10	11	19	
S7-M1391	9	10	7		U8-D1011	11	12	8	
S8-K5031	11	12	7		U8-E1011	12	13	1	
S9-A1071	1	1	11		U8-E1031	12	13	2	
S9-A1082	2	3	14		U8-E1041	12	13	3	
S9-A1091	2	3	15		U8-E1051	12	13	4	
S9-P1061	23	27	8		U8-E1061	12	13	5	
U8-A1011	1-1	2	⑫ -1		U8-F1011	24	28	3	
U8-A1021	1	1	13		U8-F1021	24	28	4	
U8-A1031	1	1	14		U8-F1031	24	28	5	
U8-A1041	1	1	15		U8-F1041	24	28	6	
U8-A1051	1	1	16		U8-G1011	21	25	2	
U8-A1072	1	1	17	SET(17,23)	U8-G1021	5	6	19	
U8-A1101	1	1	18		U8-G1041	18	19	⑦	
U8-A1141	1	1	19		U8-G1041	18-1	20	⑦	
U8-A3011	3	4	8		U8-G1051	18-1	20	⑦ -2	
U8-A3051	3	4	9		U8-G1061	18	19	8	
U8-A3061	4	5	12		U8-G1071	18	19	9	
U8-A3071	3	4	10		U8-G1071	19	21	14	
U8-B1011	5	6	13		U8-G1071	20	23	14	
U8-B1021	5	6	14		U8-G1081	18	19	10	
U8-B1031	5	6	15		U8-G1091	18	19	11	
U8-B1041	5	6	16		U8-G1101	21	25	3	
U8-B1061	5	6	17		U8-G1131	18	19	12	
U8-B1071	5	6	18		U8-H1011	22	26	16	
U8-B2011	6	7	8		U8-H1021	22	26	17	
U8-B2042	6	7	9		U8-H1031	23	27	11	
U8-B2061	7	8	11	SET(4,11)	U8-H1041	22	26	18	
U8-B2071	7	8	12		U8-H1051	22	26	19	
U8-B2081	7	8	13		U8-S0001	1	1	⑫	
U8-B2091	7	8	14		U8-S0001	1-1	2	⑫	
U8-B2101	7	8	15		U8-S0002	19	21	③	SET( ③ ,16)
U8-B2111	7	8	16		U8-S0002	19-1	22	③	
U8-B2121	7	8	17		U8-S0002	20	23	③	SET( ③ ,16)
U8-B2131	6	7	10		U8-S0002	20-1	24	③	
U8-C1012	8	9	7	SET(6,7,8)	U8-T1041	1	1	20	
U8-C1021	8	9	8		U8-T1051	11	12	9	
U8-C1031	8	9	9		U8-T1061	14	15	5	EI
U8-C1041	8	9	10		U8-T1071	10	11	20	
U8-C1051	8	9	11	SET(3,12)	U8-T1071	14	15	3	
U8-C1061	8	9	12		U8-T4050	2	3	16	EA,EI
U8-C1071	8	9	13		U8-T4050	14	15	4	
U8-C1081	8	9	14		U8-V5003	9	10	17	
U8-C1091	8	9	15		U8-V5003	15	16	15	
U8-C1101	8	9	16		U8-W1011	16	17	1	
U8-C1111	9	10	8		U8-W1021	16	17	2	
U8-C1121	9	10	9		U8-W2011	16	17	3	
U8-C1131	8	9	17		U8-W2021	16	17	4	
U8-C1141	8	9	18		U8-W2031	16	17	5	
U8-C2011	10	11	10		U8-W2041	16	17	6	
U8-C2041	10	11	11		U8-W2051	16	17	7	
U8-C2051	10	11	12		U8-W2061	16	17	8	
U8-C2061	10	11	13	SET(4,13)	U8-W2071	16	17	9	
U8-C2071	10	11	14		U8-W2081	16	17	10	
U8-C2081	10	11	15		U8-W2091	16	17	11	
U8-C2091	10	11	16		U8-W2101	16	17	12	
U8-C2101	10	11	17		U8-W2111	16	17	13	
U8-C2143	10	11	18		U8-W2121	16	17	14	

PARTS No.	SECTION	PAGE	KEY No.	REMARKS
U8-W2131	16	17	15	
U8-W2141	16	17	16	
U8-W2301	16	17	17	O.P
U8-W2301	22	26	15	
U8-X1011	7	8	18	
U8-X1011	15	16	17	
U8-X1020	5	6	20	
U8-X1020	15	16	16	
U8-X1030	4	5	9	
	15	16	12	
U8-Y1170	18	19	15	
U8-Y1180	19	21	17	
U8-Y1180	20	23	17	
U8-Y1210	23	27	15	
U8-Y1300	17	18	3	
U8-Y1310	17	18	4	
UA058	9	10	16	
UA058	15	16	18	
XA001	23	27	12	
XA002	9	10	10	
XA003	9	10	11	
XA012	22	26	20	
XA014	10	11	21	
XA021	9	10	12	
XC019	7	8	19	
XC037	11	12	10	
XC040	9	10	13	
XC055	9	10	14	
XC063	7	8	20	
XZ006	21	25	4	