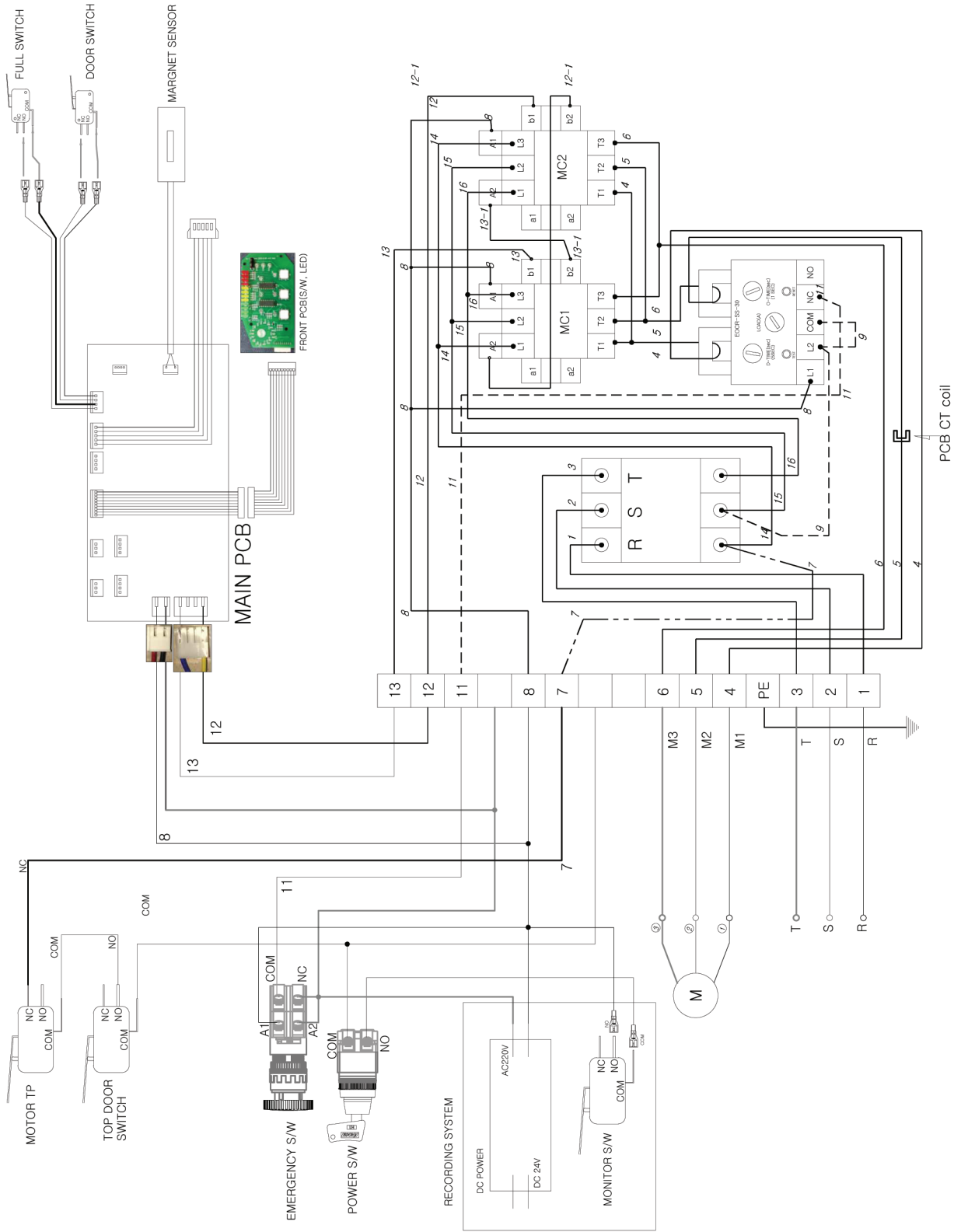


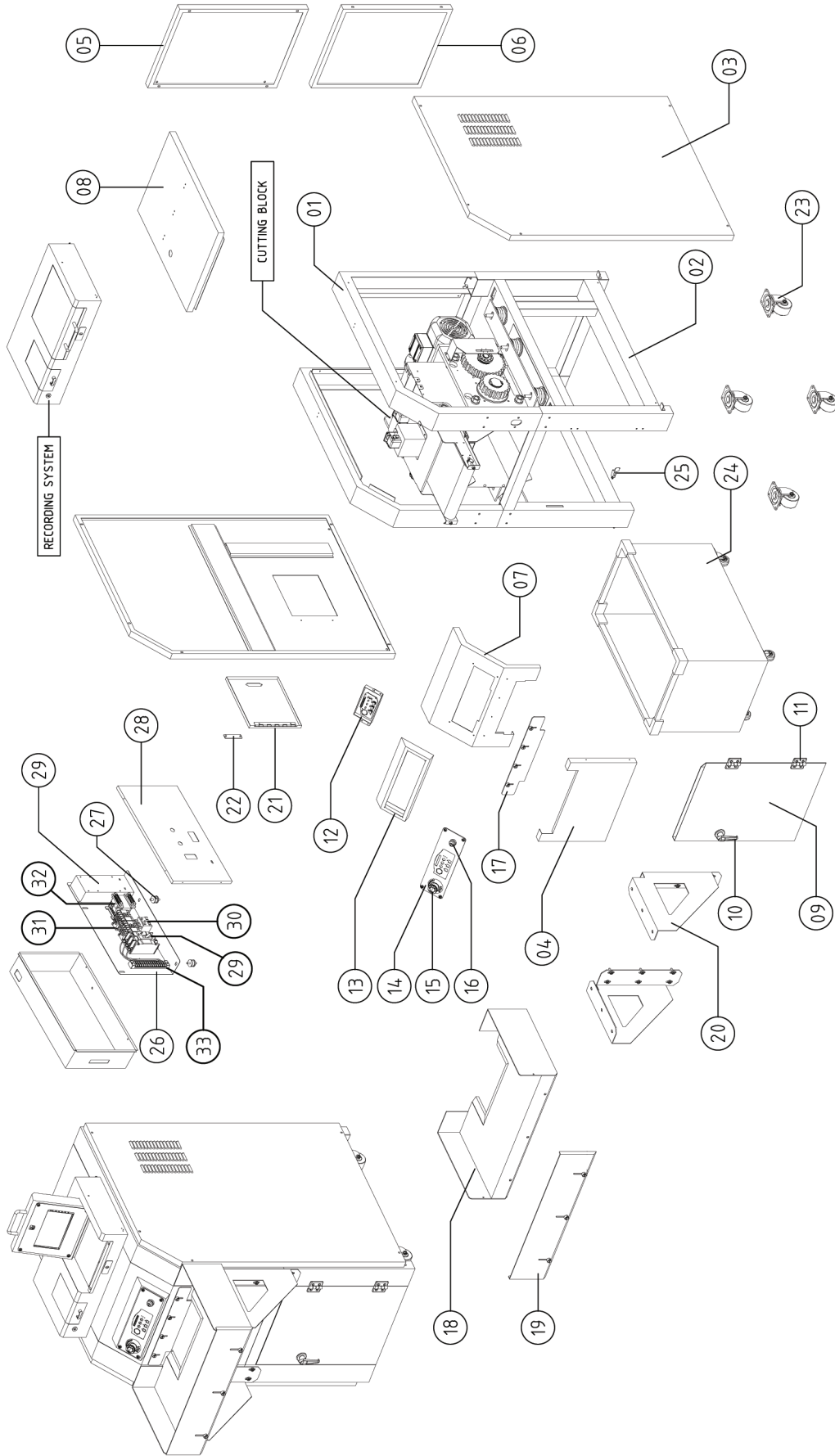
FORMAX[®]

FD 87 Casino-EX Shredder

ELECTRICAL DIAGRAM



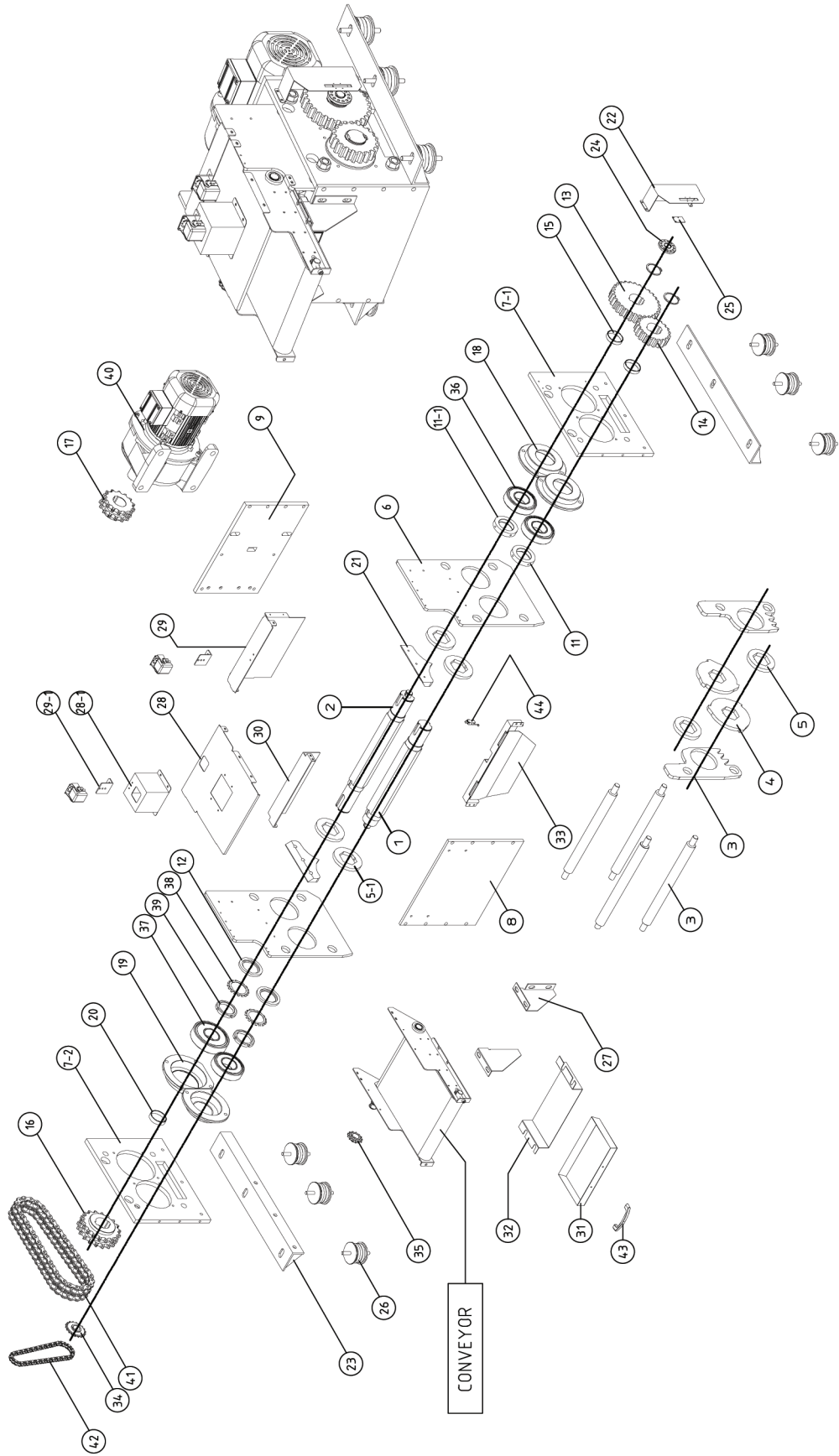
CASE



CASE

Item	Part #	Description
1	FD87CAS-EXA001	TOP CFRAME (L, R)
2	FD87CAS-EXA002	BODY FRAME
3	FD87CAS-EXA003	SIDE COVER (L, R)
4	FD87CAS-EXA004	FRONT COVER
5	FD87CAS-EXA005	REAR COVER (UPPER)
6	FD87CAS-EXA006	REAR COVER (LOW)
7	FD87CAS-EXA007	TOP COVER (FRONT)
8	FD87CAS-EXA008	TOP COVER (REAR)
9	FD87CAS-EXA009	DOOR
10	FD87CAS-EXA010	DOOR HANDLE
11	FD87CAS-EXA011	DOOR HINGE
12	FD87CAS-EXA012	CONTROL PCB COVER
13	FD87CAS-EXA013	SWITCH COVER
14	FD87CAS-EXA014	CONTROL PLATE
15	FD87CAS-EXA015	EMERGENCY SWITCH
16	FD87CAS-EXA016	KEY SWITCH
17	FD87CAS-EXA017	THROAT GUIDE
18	FD87CAS-EXA018	LOADING TABLE
19	FD87CAS-EXA019	LOADING TABLE COVER
20	FD87CAS-EXA020	LOADING TABLE SUPPORT (L, R)
21	FD87CAS-EXA021	SWITCH BOX DOOR
22	FD87CAS-EXA022	DOOR PUSH
23	FD87CAS-EXA023	CASTER
24	FD87CAS-EXA024	WASTE BASKET
25	FD87CAS-EXA025	DOOR S/W
26	FD87CAS-EXA026	SWITCH PANEL
27	FD87CAS-EXA027	VIBRATIONPROOF RUBBER
28	FD87CAS-EXA028	SWITCH BOX COVER
29	FD87CAS-EXA029	MCCB
30	FD87CAS-EXA030	EOCR
31	FD87CAS-EXA031	MAGNET S/W
32	FD87CAS-EXA032	TRANSFORMER
33	FD87CAS-EXA033	TERMINAL BLOCK

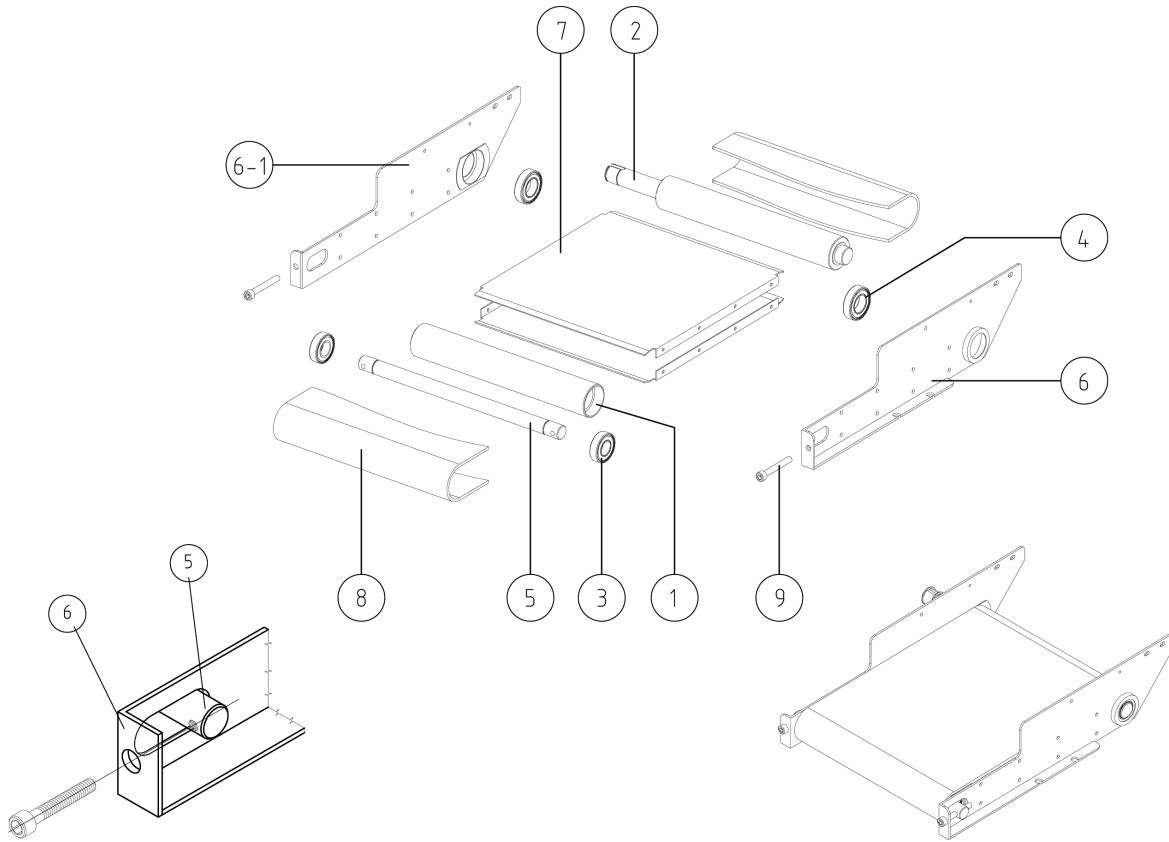
CUTTING BLOCK



CUTTING BLOCK

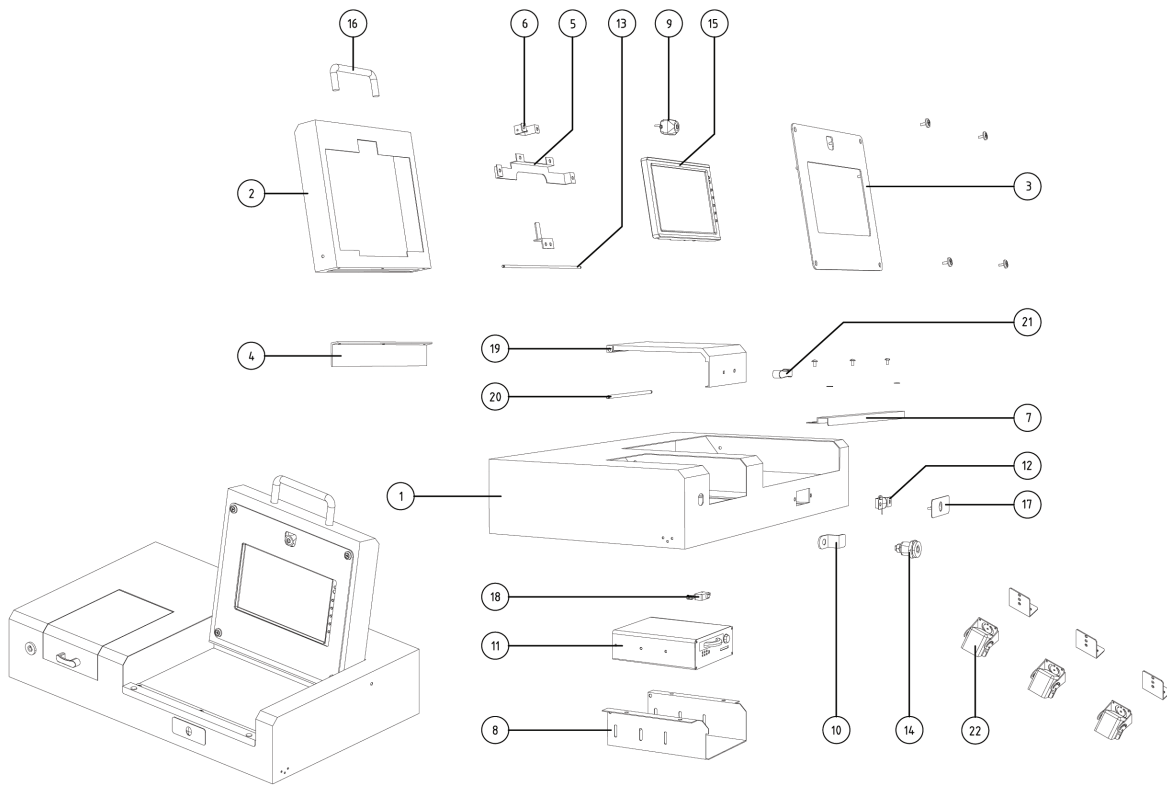
Item	Part #	Description
1	FD87CAS-EXD001	SHAFT (SHORT) HEX. 60
2	FD87CAS-EXD002	SHAFT (LONG) HEX. 60
3	FD87CAS-EXD003	GUIDE
4	FD87CAS-EXD004	CUTTER
5	FD87CAS-EXD005	RING
5-1	FD87CAS-EXD005-1	SPACE RING
6	FD87CAS-EXD006	GUIDE SUPPORT
7-1	FD87CAS-EXD007-1	SIDE PLATE (R)
7-2	FD87CAS-EXD007-2	SIDE PLATE (L)
8	FD87CAS-EXD008	FRONT COVER
9	FD87CAS-EXD009	MOTOR PLATE
10	FD87CAS-EXD010	POST Ø35
11	FD87CAS-EXD011	SHOT SHAFT FIX NUT Ø90
11-1	FD87CAS-EXD011-1	LONG SHAFT FIX NUT Ø90
12	FD87CAS-EXD012	CUTTER PRESS RING Ø90
13	FD87CAS-EXD013	SPUR GEAR A M=6, Z=30
14	FD87CAS-EXD014	SPUR GEAR B M=6, Z=20
15	FD87CAS-EXD015	GEAR SPACE RING Ø62x14L
16	FD87CAS-EXD016	SPROCKET (SHAFT) #80, Z=18
17	FD87CAS-EXD017	SPROCKET (MOTOR) #80, Z=14
18	FD87CAS-EXD018	BEARING HOUSING A Ø186
19	FD87CAS-EXD019	BEARING HOUSING B Ø200
20	FD87CAS-EXD020	SPROCKET SPACE RING Ø62x16.5L
21	FD87CAS-EXD021	PAPER GUIDE
22	FD87CAS-EXD022	SENSOR BRACKET
23	FD87CAS-EXD023	VIBRATION PROOF BRACKET (L,R)
24	FD87CAS-EXD024	MAGNETIC BRACKET Ø67
25	FD87CAS-EXD025	MAGNETIC SENSOR
26	FD87CAS-EXD026	VIBRATION PROOF RUBBER Ø80
27	FD87CAS-EXD027	CONVEYOR SUPPORT (L, R)
28	FD87CAS-EXD028	TOP COVER
28-1	FD87CAS-EXD028-1	CAMERA COVER
29	FD87CAS-EXD029	REAR GUIDE COVER
29-1	FD87CAS-EXD029-1	CAMERA BRACKET
30	FD87CAS-EXD030	FRONT GUIDE COVER
31	FD87CAS-EXD031	TRAY
32	FD87CAS-EXD032	TRAY BRACKET
33	FD87CAS-EXD033	FULL PLATE
34	FD87CAS-EXD034	SPROCKET (CONVEYOR) #40, Z=18
35	FD87CAS-EXD035	SPROCKET (CONVEYOR) #40, Z=13
36	FD87CAS-EXD036	BEARING A 6311ZZ
37	FD87CAS-EXD037	BEARING B 6411ZZ
38	FD87CAS-EXD038	BEARING WASHER AW12
39	FD87CAS-EXD039	BEARING NUT AN12
40	FD87CAS-EXD040	MOTOR 3HP(1/75)
41	FD87CAS-EXD041	CHAIN #80/42Link
42	FD87CAS-EXD042	CONVEYOR CHAIN #40/52Link
43	FD87CAS-EXD043	TRAY HANDLE
44	FD87CAS-EXD044	FULL SWITCH

CONVEYOR



Item	Part #	Description
1	FD87CAS-EXB001	CONVEYOR ROLLER-A Ø47
2	FD87CAS-EXB002	CONVEYOR ROLLER-B Ø47
3	FD87CAS-EXB003	BEARING A
4	FD87CAS-EXB004	BEARING B
5	FD87CAS-EXB005	CONVEYOR POST Ø20
6	FD87CAS-EXB006	CONVEYOR SIDE (R)
6-1	FD87CAS-EXB006-1	CONVEYOR SIDE (L)
7	FD87CAS-EXB007	CONVEYOR PAD
8	FD87CAS-EXB008	CONVEYOR BELT 407x750
9	FD87CAS-EXB009	WRECH BOLT

RECORDING SYSTEM



Item	Part #	Description
1	FD87CAS-EXC001	MEDIA BODY
2	FD87CAS-EXC002	MONITOR BOX
3	FD87CAS-EXC003	MONITOR COVER
4	FD87CAS-EXC004	MONITOR BOX BRK
5	FD87CAS-EXC005	MONITOR BRK
6	FD87CAS-EXC006	CAMERA BRK
7	FD87CAS-EXC007	FRONT BRK
8	FD87CAS-EXC008	BLACKBOX BRK
9	FD87CAS-EXC009	CAMERA-1
10	FD87CAS-EXC010	CAMLOCK BRK
11	FD87CAS-EXC011	RECORDER
12	FD87CAS-EXC012	REMOTOE SENSOR + BRK
13	FD87CAS-EXC013	MONITOR BOX POST Ø5
14	FD87CAS-EXC014	CAMLOCK BRK BY1-09
15	FD87CAS-EXC015	MONITOR
16	FD87CAS-EXC016	HANDLE
17	FD87CAS-EXC017	REMOTE SENSOR COVER
18	FD87CAS-EXC018	S/W
19	FD87CAS-EXC019	DOOR
20	FD87CAS-EXC020	DOOR POST Ø5
21	FD87CAS-EXC021	DOOR HANDLE
22	FD87CAS-EXC022	CAMERA-2