

OnSite

Shred at the Source!



Chain-Driven AC Geared Motor: Powerful, durable and built to outlast the competition



All-Metal Gears: Heavy duty steel gears for high performance and minimal noise



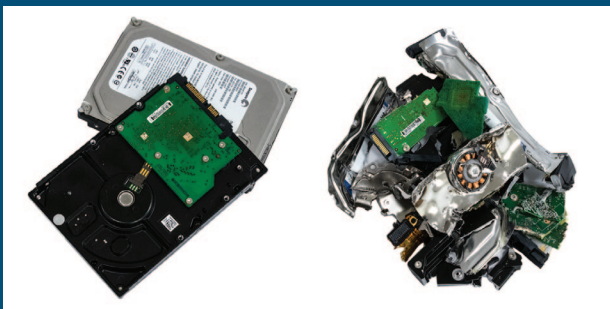
LED Control Panel: Easy to use with load indicator



Separate Shredding Chambers: Designed for continuous shredding of 3.5" HDDs and 2.5" HDD/SSDs

FD 87HDS-R

HDD / SSD HARD DRIVE SHREDDER WITH RECORDING SYSTEM



3.5" HDD Hard Drives



2.5" HDD & SSD Hard Drives

Local Dealer:

FORMAX®

www.formax.com

Physically Destroying Hard Drives is the Best Way to Keep Data Secure

The Formax **FD 87HDS-R HDD / SSD Hard Drive Shredder** provides the best level of security by physically destroying discarded hard drives. For optimal security and accountability, the FD 87HDS-R features a **Recording System with internal and external cameras** to monitor and document their destruction. **Separate shredding chambers** sized for 3.5" HDD and 2.5" SSD & HDD drives have sliding **metal shields for safety** and are designed for **continuous operation**. Its **chain-driven AC-gear motor** is housed in a solid-metal cabinet with casters for mobility and is engineered for low operational noise. Combining safety, durability, and an extra level of security, FD 87HDS-R is the best choice to protect your digital data.



User-Friendly Control Panel:
Door Open Sensor, Reverse,
Waste Bin Full Indicator



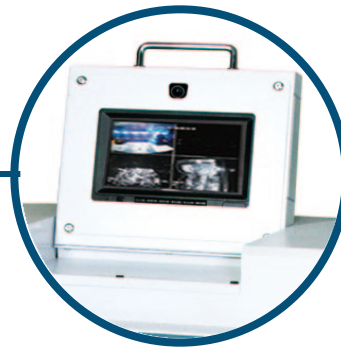
Commercial Grade:
SSDs and HDDs are no match
for the solid-steel blades and
rugged chain-driven motor



Separate Shredding Chambers:
Metal safety shields for safe,
continuous operation,
and individual LED counters



Rugged Waste Bin:
Durable molded plastic for
convenient collection
of shredded particles



Recording System:
Internal & external cameras
monitor and document
destruction on 64GB SD card

OPERATING FEATURES

- Separate Shredding Chambers
- Shreds 3.5" HDD and 2.5" HDD and SSDs
- Designed for Continuous Operation
- Internal and External Recording System
- LED Control Panel
- Fully Enclosed Chambers for Safety
- Heat-Treated Steel Cutting Blades
- Heavy Duty Chain-Driven AC-Gear Motor
- Resettable LED Counters
- All Metal Cabinet with Casters
- Front Access Waste Bin
- Large Emergency Stop Button
- Thermal Overload Protection
- Safety Key Lock

SUPPLIES

- Cutting Head Lubricating Oil:
#8000-10, six 8-ounce bottles per case

WARRANTY

- Cutting Head: 1 year warranty (parts only)
- All other parts: 1 year warranty

SPECIFICATIONS

Feed Opening for 3.5" HDD	4.72" (120mm)
Feed Opening for 2.5" HDD & SSD	3.54" (90mm)
Shred Particle Size for 3.5" HDD	1.6" (40mm) x random
Shred Particle Size for 2.5" HDD & SSD	.19" (5mm) x random
Infeed Capacity	Continuous, 1 drive at a time
Speed *	3-4 drives per minute
Dimensions	24" W x 34" D x 51" H (600 x 850 x 1290mm)
Security Level	H-4 (DIN 66399 Standard)
Weight	1,146 lbs (520kg)
Power	220V 20A 3-Phase NEMA Plug / Receptacle: L1520P / L1520R

* Shredding speed and particle size vary based on media type and size